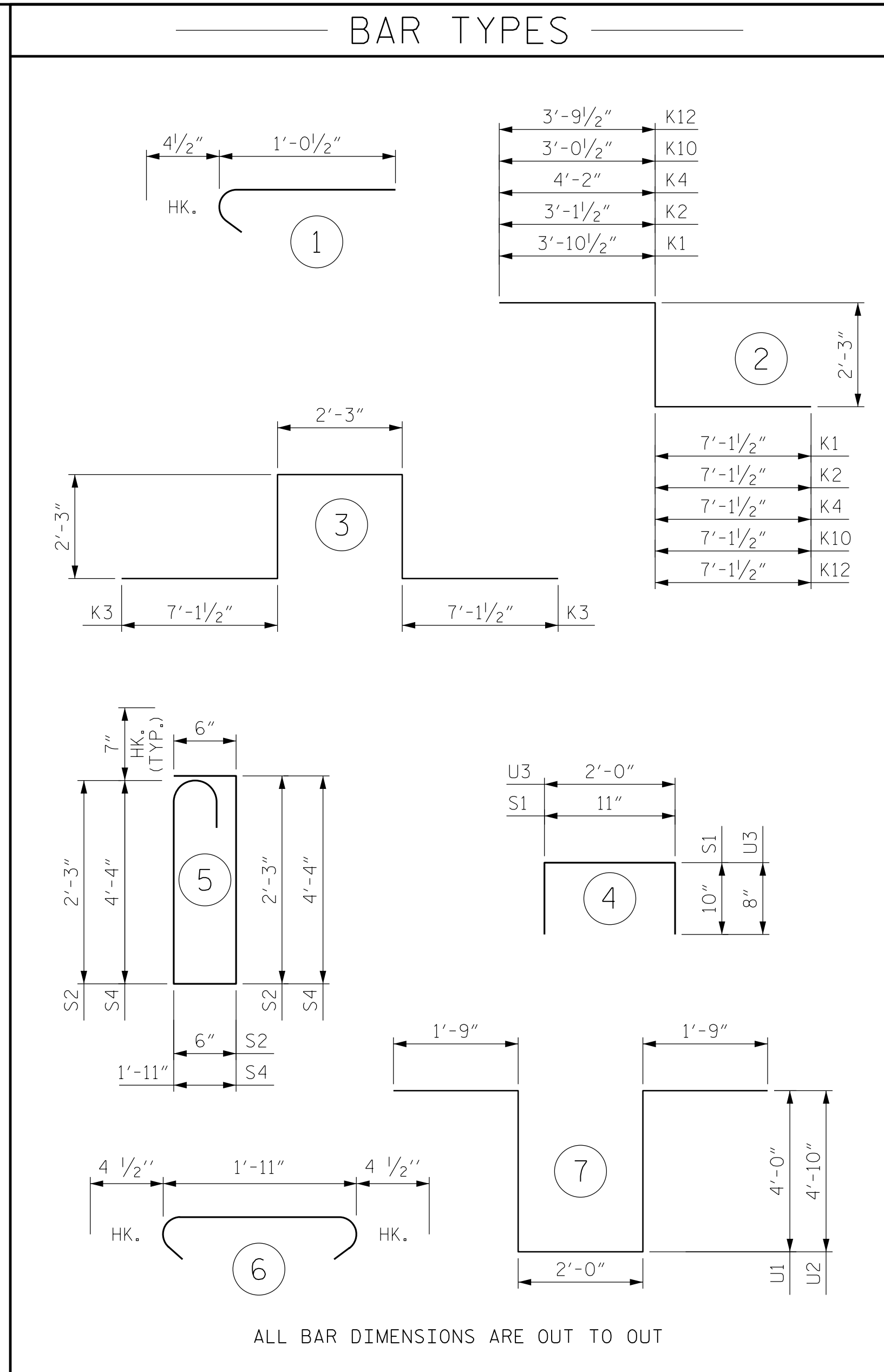


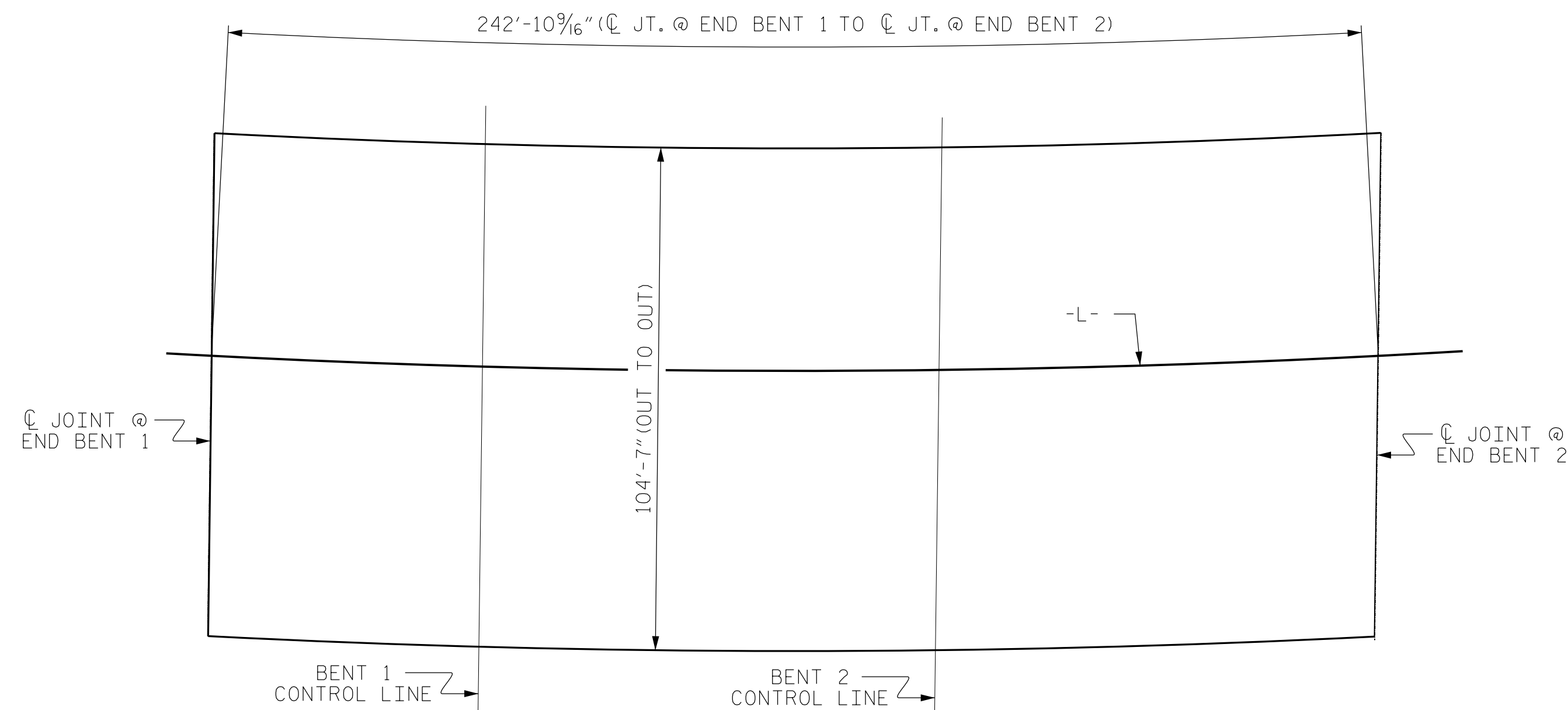
| CLASS AA CONCRETE BREAKDOWN |  |                |
|-----------------------------|--|----------------|
| STAGE I                     |  |                |
| POUR #1                     |  | 65.9 CU. YDS.  |
| POUR #2                     |  | 141.1 CU. YDS. |
| POUR #3                     |  | 139.7 CU. YDS. |
| POUR #4                     |  | 7.6 CU. YDS.   |
| SIDEWALK                    |  | 44.4 CU. YDS.  |
| TOTAL                       |  | 398.7 CU. YDS. |
| STAGE II                    |  |                |
| POUR #5                     |  | 94.1 CU. YDS.  |
| POUR #6                     |  | 202.5 CU. YDS. |
| POUR #7                     |  | 200.5 CU. YDS. |
| POUR #8                     |  | 9.0 CU. YDS.   |
| 2'-0" CLOSURE POUR #9       |  | 17.5 CU. YDS.  |
| SIDEWALK                    |  | 31.9 CU. YDS.  |
| TOTAL                       |  | 555.5 CU. YDS. |

| SUPERSTRUCTURE BILL OF MATERIAL |                                   |                               |  |
|---------------------------------|-----------------------------------|-------------------------------|--|
|                                 | CLASS AA CONCRETE<br>( CU. YDS. ) | REINFORCING STEEL<br>( LBS. ) | EPOXY COATED REINFORCING STEEL<br>( LBS. ) |
| STAGE I                         | 398.7                             | 33,371                        | 39,537                                     |
| STAGE II                        | 555.5                             | 48,994                        | 55,838                                     |
| TOTALS                          | 954.2                             | 81,431                        | 95,375                                     |

| GROOVING BRIDGE FLOORS |               |
|------------------------|---------------|
| APPROACH SLABS         | 4,195 SQ.FT.  |
| BRIDGE DECK            | 21,296 SQ.FT. |
| TOTAL                  | 25,491 SQ.FT. |



| BILL OF MATERIAL                     |     |      |      |         |        |                                      |     |      |      |         |        |
|--------------------------------------|-----|------|------|---------|--------|--------------------------------------|-----|------|------|---------|--------|
| STAGE I                              |     |      |      |         |        | STAGE II                             |     |      |      |         |        |
| BAR                                  | NO. | SIZE | TYPE | LENGTH  | WEIGHT | BAR                                  | NO. | SIZE | TYPE | LENGTH  | WEIGHT |
| * A1                                 | 447 | #5   | STR  | 41'-11" | 19542  | * A3                                 | 447 | #5   | STR  | 60'-0"  | 27973  |
| A2                                   | 447 | #5   | STR  | 41'-11" | 19542  | A4                                   | 447 | #5   | STR  | 60'-0"  | 27973  |
| * B1                                 | 56  | #4   | STR  | 19'-5"  | 726    | * B1                                 | 88  | #4   | STR  | 19'-5"  | 1141   |
| * B2                                 | 28  | #7   | STR  | 55'-1"  | 3153   | * B2                                 | 44  | #7   | STR  | 55'-1"  | 4954   |
| * B3                                 | 28  | #7   | STR  | 22'-7"  | 1292   | * B3                                 | 44  | #7   | STR  | 22'-7"  | 2031   |
| * B4                                 | 56  | #4   | STR  | 17'-0"  | 636    | * B4                                 | 88  | #4   | STR  | 17'-0"  | 999    |
| * B5                                 | 56  | #7   | STR  | 35'-5"  | 4054   | * B5                                 | 88  | #7   | STR  | 35'-5"  | 6370   |
| * B6                                 | 28  | #7   | STR  | 27'-10" | 1593   | * B6                                 | 40  | #7   | STR  | 27'-10" | 2276   |
| * B7                                 | 84  | #4   | STR  | 21'-9"  | 1220   | * B7                                 | 132 | #4   | STR  | 21'-9"  | 1918   |
| B8                                   | 230 | #5   | STR  | 50'-6"  | 12114  | B8                                   | 345 | #5   | STR  | 50'-6"  | 18172  |
| * B9                                 | 54  | #4   | STR  | 28'-9"  | 1037   | * B9                                 | 54  | #4   | STR  | 28'-9"  | 1037   |
| * D1                                 | 894 | #5   | STR  | 3'-6"   | 3264   | * D1                                 | 894 | #5   | STR  | 3'-6"   | 3264   |
| * G1                                 | 2   | #5   | STR  | 41'-11" | 87     | * G1                                 | 4   | #5   | STR  | 31'-4"  | 131    |
| * G2                                 | 243 | #4   | STR  | 6'-3"   | 1015   | * G2                                 | 243 | #4   | STR  | 6'-3"   | 1015   |
| * J1                                 | 70  | #4   | 1    | 1'-5"   | 66     | * J1                                 | 110 | #4   | 1    | 1'-5"   | 104    |
| * K1                                 | 2   | #8   | 2    | 13'-3"  | 71     | * K1                                 | 2   | #8   | 2    | 13'-3"  | 71     |
| * K2                                 | 4   | #8   | 2    | 12'-6"  | 134    | * K3                                 | 20  | #8   | 3    | 21'-0"  | 1121   |
| * K3                                 | 12  | #8   | 3    | 21'-0"  | 673    | * K6                                 | 24  | #6   | STR  | 7'-3"   | 116    |
| * K4                                 | 2   | #8   | 2    | 13'-7"  | 72     | K8                                   | 24  | #4   | STR  | 5'-7"   | 90     |
| * K6                                 | 16  | #6   | STR  | 7'-3"   | 77     | K9                                   | 96  | #4   | STR  | 7'-3"   | 465    |
| K7                                   | 20  | #4   | STR  | 19'-5"  | 259    | * K10                                | 4   | #8   | 2    | 12'-5"  | 133    |
| K8                                   | 16  | #4   | STR  | 5'-7"   | 60     | * K12                                | 2   | #8   | 2    | 13'-2"  | 70     |
| K9                                   | 64  | #4   | STR  | 7'-3"   | 310    | K13                                  | 20  | #4   | STR  | 28'-8"  | 383    |
| * K14                                | 4   | #6   | STR  | 3'-0"   | 18     | * K14                                | 4   | #6   | STR  | 3'-0"   | 18     |
| * K15                                | 4   | #8   | STR  | 3'-6"   | 37     | K15                                  | 4   | #8   | STR  | 3'-6"   | 37     |
|                                      |     |      |      |         |        | K16                                  | 4   | #4   | STR  | 2'-7"   | 7      |
|                                      |     |      |      |         |        | K17                                  | 16  | #4   | STR  | 7'-3"   | 77     |
| * S1                                 | 68  | #5   | 4    | 2'-7"   | 183    | * S1                                 | 104 | #5   | 4    | 2'-7"   | 280    |
| * S2                                 | 68  | #5   | 5    | 6'-1"   | 431    | * S2                                 | 104 | #5   | 5    | 6'-1"   | 660    |
| S3                                   | 256 | #4   | 6    | 2'-8"   | 456    | S3                                   | 424 | #4   | 6    | 2'-8"   | 755    |
|                                      |     |      |      |         |        | S4                                   | 4   | #4   | 5    | 10'-11" | 29     |
| U1                                   | 16  | #4   | 7    | 13'-6"  | 144    | U1                                   | 24  | #4   | 7    | 13'-6"  | 216    |
| U2                                   | 48  | #4   | 7    | 15'-2"  | 486    | U2                                   | 78  | #4   | 7    | 15'-2"  | 790    |
| * U3                                 | 70  | #4   | 4    | 3'-4"   | 156    | * U3                                 | 70  | #4   | 4    | 3'-4"   | 156    |
| REINFORCING STEEL = 33,371           |     |      |      |         |        | REINFORCING STEEL = 48,994           |     |      |      |         |        |
| * EPOXY COATED REINF. STEEL = 39,537 |     |      |      |         |        | * EPOXY COATED REINF. STEEL = 55,838 |     |      |      |         |        |

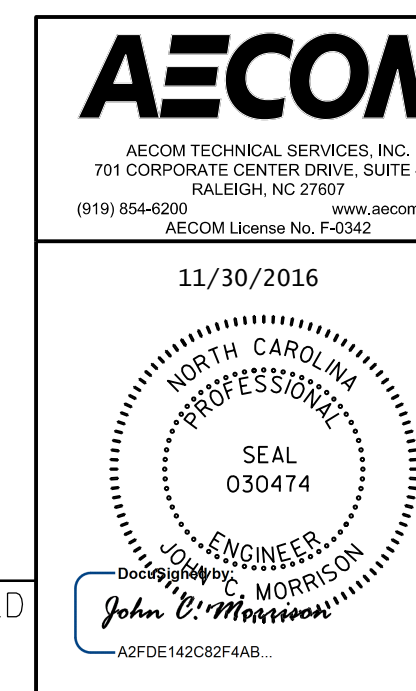


LAYOUT FOR COMPUTING AREA OF REINFORCED CONCRETE DECK SLAB ( SQ. FT. = 25,401 )

| SUPERSTRUCTURE REINFORCING STEEL LENGTHS ARE BASED ON THE FOLLOWING MINIMUM SPLICE LENGTHS |   |          |                |          |                          |
|--|---|----------|----------------|----------|--------------------------|
| BAR SIZE   | SUPERSTRUCTURE EXCEPT APPROACH SLABS, PARAPET, AND BARRIER RAIL |          | APPROACH SLABS |          | PARAPET AND BARRIER RAIL |
|  | EPOXY COATED  | UNCOATED | EPOXY COATED   | UNCOATED |                          |
| #4   | 2'-0"   | 1'-9"    | 2'-0"          | 1'-9"    | 2'-9"                    |
| #5   | 2'-6"   | 2'-2"    | 2'-6"          | 2'-2"    | 3'-5"                    |
| #6   | 3'-0"   | 2'-7"    | 3'-10"         | 2'-7"    | 4'-4"                    |
| #7   | 5'-3"   | 3'-6"    |                |          |                          |
| #8   | 6'-10"  | 4'-7"    |                |          |                          |

DRAWN BY : K.H. COMPTON DATE : 7/2016  
 CHECKED BY : J.C. MORRISON DATE : 7/2016  
 DESIGNED BY : K.H. COMPTON DATE : 7/2016

PROJECT NO. U-4910A  
 CABARRUS COUNTY  
 STATION: 147+80.00 -L-



STATE OF NORTH CAROLINA  
 DEPARTMENT OF TRANSPORTATION  
 SUPERSTRUCTURE  
 BILL OF MATERIAL

| REVISIONS |     |       |     |     |       | SHEET NO.    |
|-----------|-----|-------|-----|-----|-------|--------------|
| NO.       | BY: | DATE: | NO. | BY: | DATE: |              |
| 1         |     |       | 3   |     |       | TOTAL SHEETS |
| 2         |     |       | 4   |     |       | 55           |

DOCUMENT NOT CONSIDERED FINAL UNLESS ALL SIGNATURES COMPLETED

DATE: 11/30/2016 TIME: 10:46 AM USER: H:\aecom\jcm\001\work\Technical\08\_Structural\08\_S34\_BOM.dwg