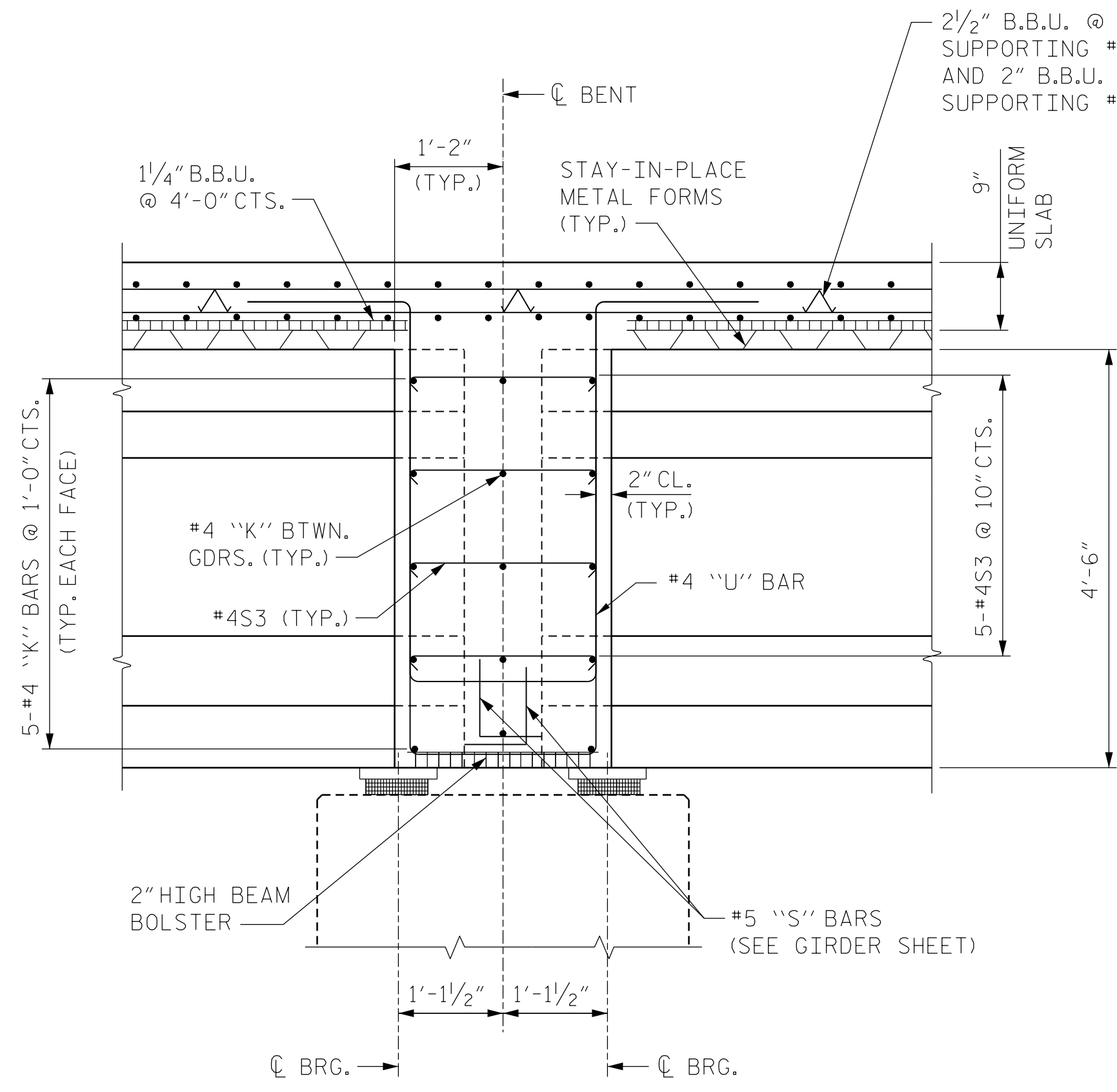
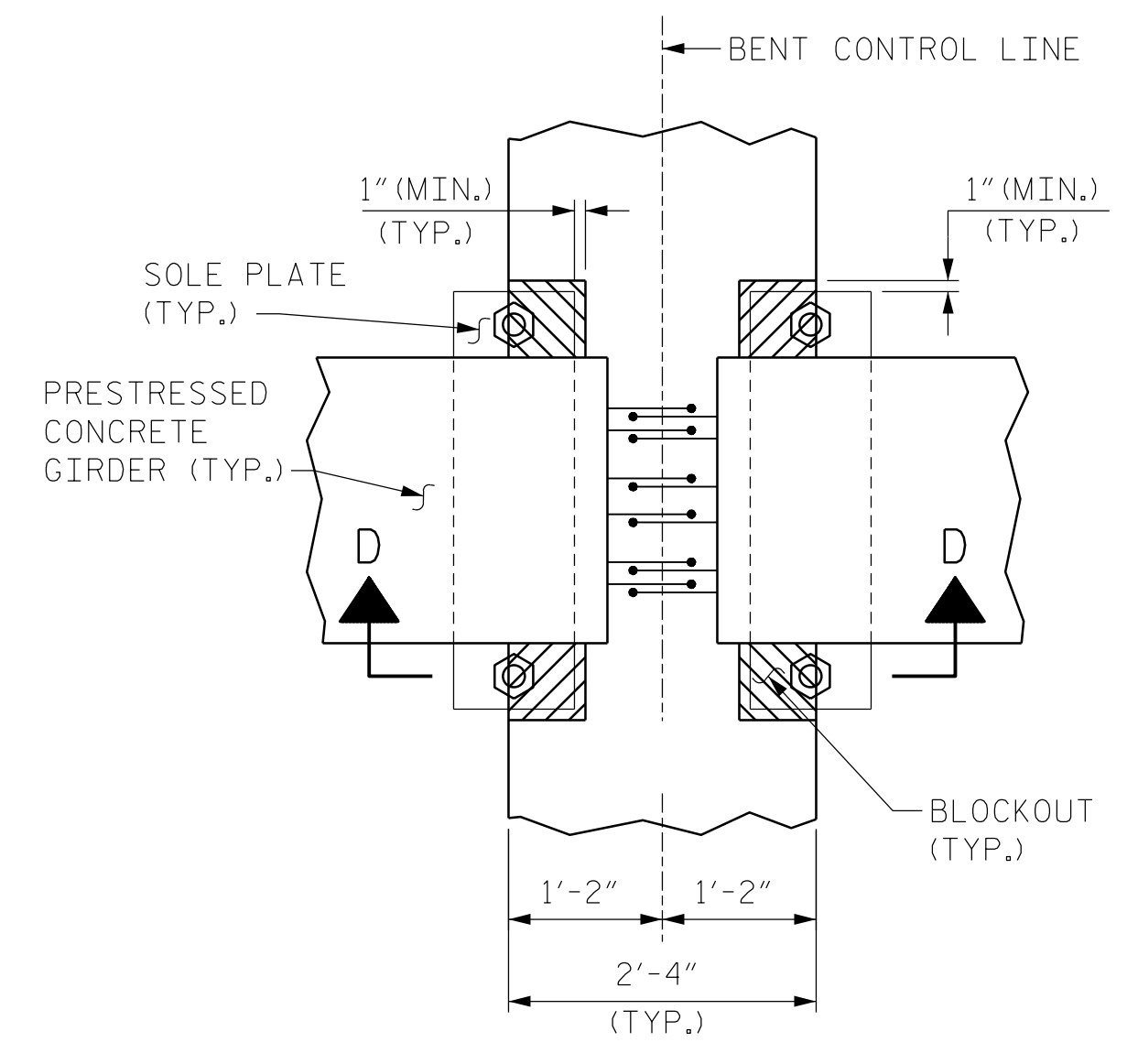


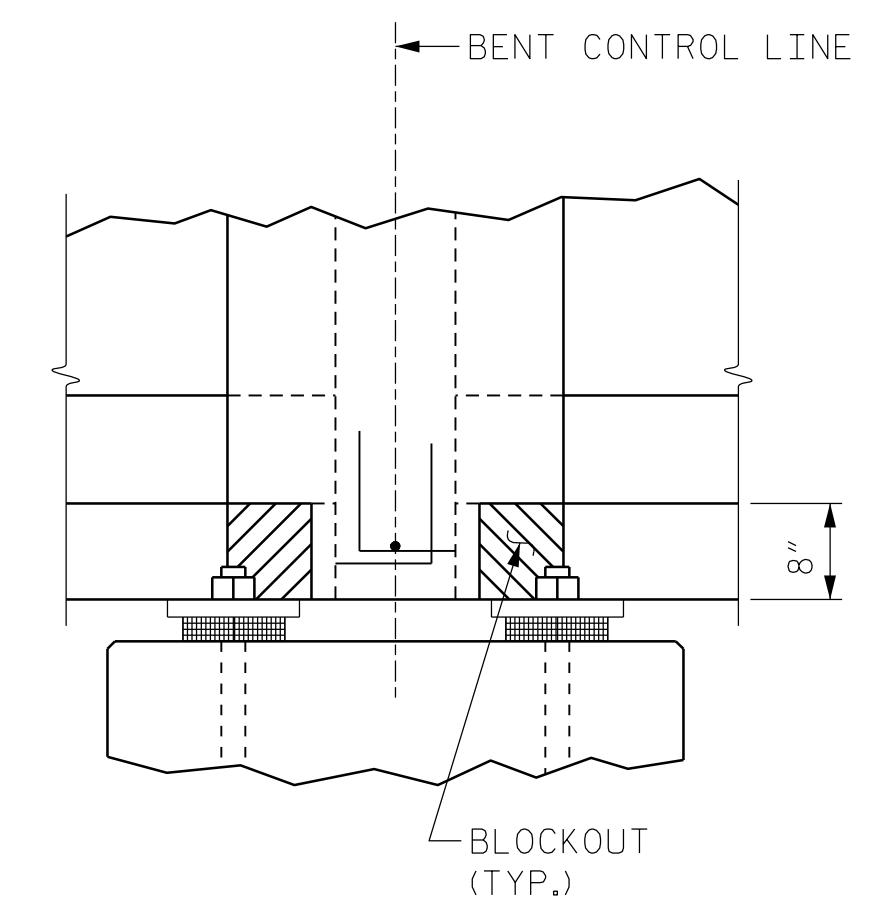
SECTION THRU END BENT DIAPHRAGM
 * #5G1 BAR MAY BE SHIFTED SLIGHTLY, AS NECESSARY, TO CLEAR REINFORCING STEEL AND STIRRUPS.



SECTION THRU BENT DIAPHRAGMS

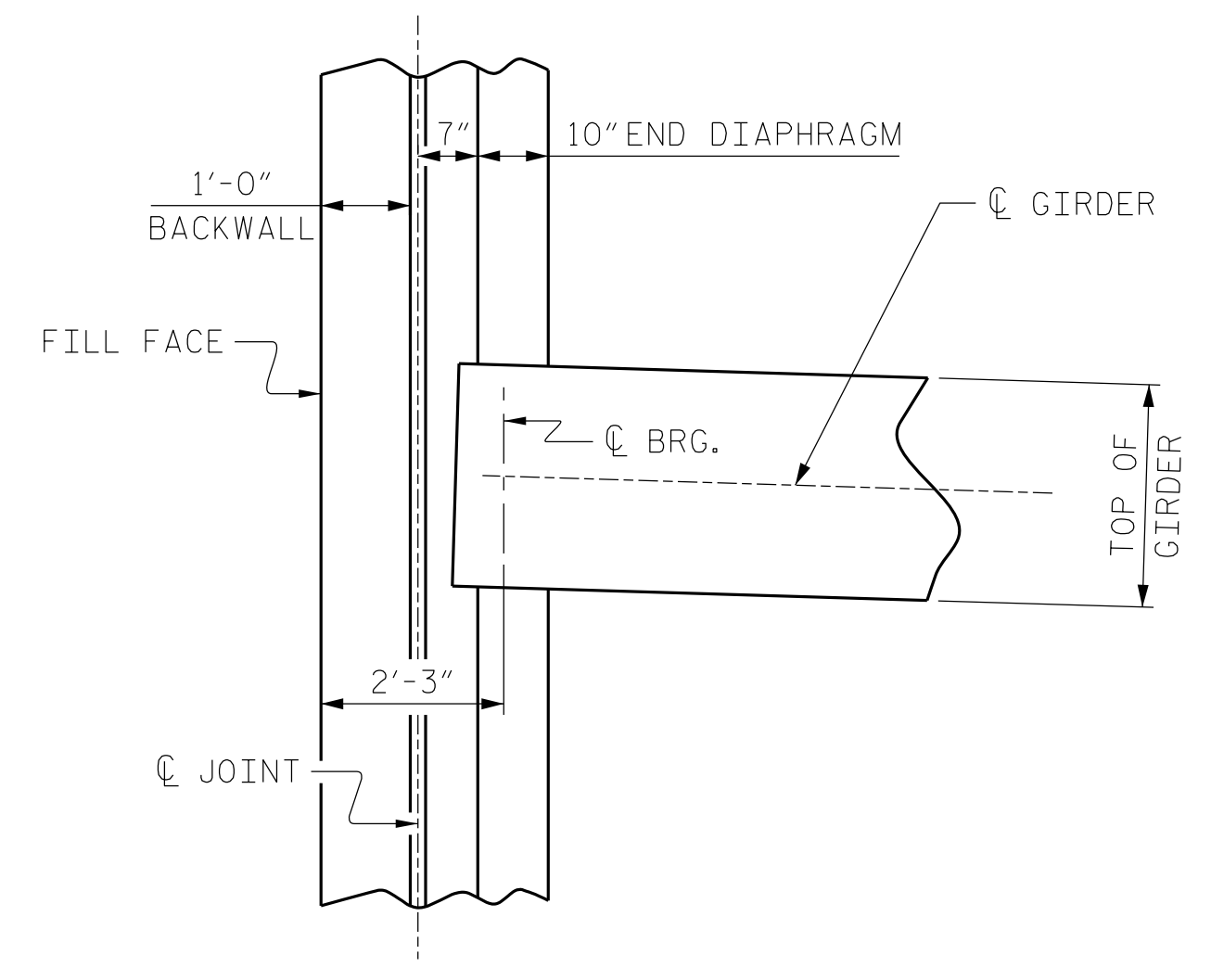


PLAN VIEW

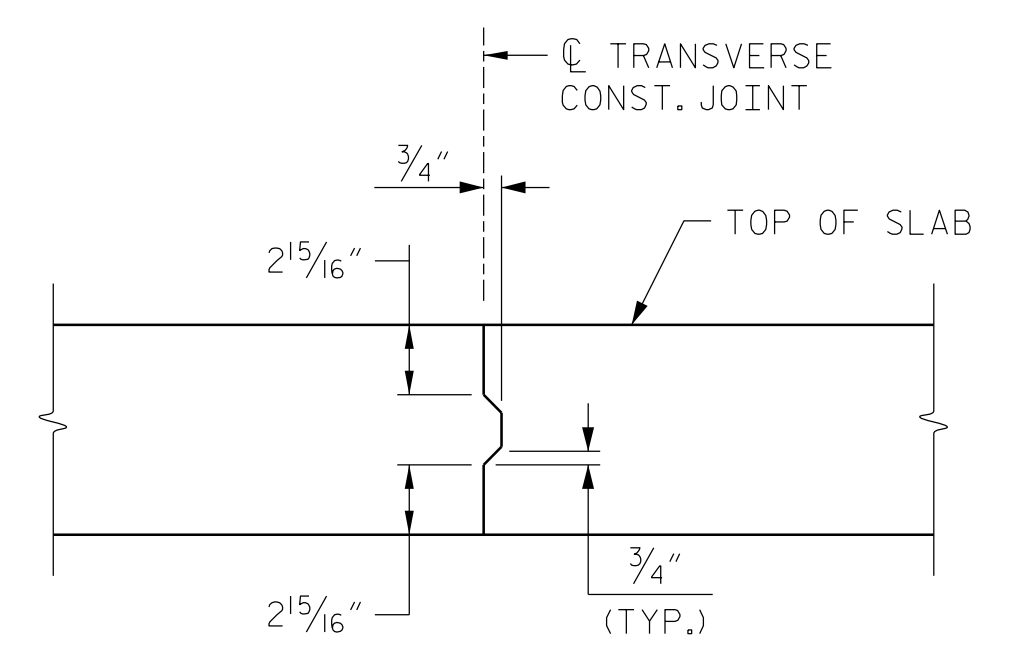


SECTION "D-D"

BLOCKOUT DETAIL
 (BENT DIAPHRAGM FOR CONTINUOUS DECK SLAB AT INTERIOR BENTS)



END BENT DIAPHRAGM



TRANSVERSE CONSTRUCTION JOINT DETAIL

NOTES: REINFORCING STEEL IN SLAB NOT SHOWN.
 LONGITUDINAL REINFORCING STEEL SHALL BE CONTINUOUS THRU JOINT.

PROJECT NO. U-4910A
CABARRUS COUNTY
 STATION: 147+80.00 -L-

SHEET 3 OF 3

AECOM
 AECOM TECHNICAL SERVICES, INC.
 701 CORPORATE CENTER DRIVE, SUITE 475
 RALEIGH, NC 27607
 (919) 854-6200 www.aecom.com
 AECOM License No. F-0342

11/30/2016

NORTH CAROLINA PROFESSIONAL SEAL
 030474
 JOHN B. MORRISON
 ENGINEER
 A2F0E142C82F4A8

STATE OF NORTH CAROLINA
 DEPARTMENT OF TRANSPORTATION
 RALEIGH

SUPERSTRUCTURE
 TYPICAL SECTION
 AND DETAILS

REVISIONS						SHEET NO.
NO.	BY:	DATE:	NO.	BY:	DATE:	TOTAL SHEETS
1			3			55
2			4			

DOCUMENT NOT CONSIDERED FINAL UNLESS ALL SIGNATURES COMPLETED

DATE: 11/30/2016 TIME: 10:06:35 AM
 USER: H:\aecom\030474\14000_Structural\408_Structural\408_019_U4910A_SML_310_T_S03.dgn
 DGN: 016030014000_Structural\408_Structural\408_019_U4910A_SML_310_T_S03.dgn

DRAWN BY :	N.K. BROWN	DATE :	7/2016
CHECKED BY :	K.H. COMPTON	DATE :	7/2016
DESIGNED BY :	N.K. BROWN	DATE :	2/2016