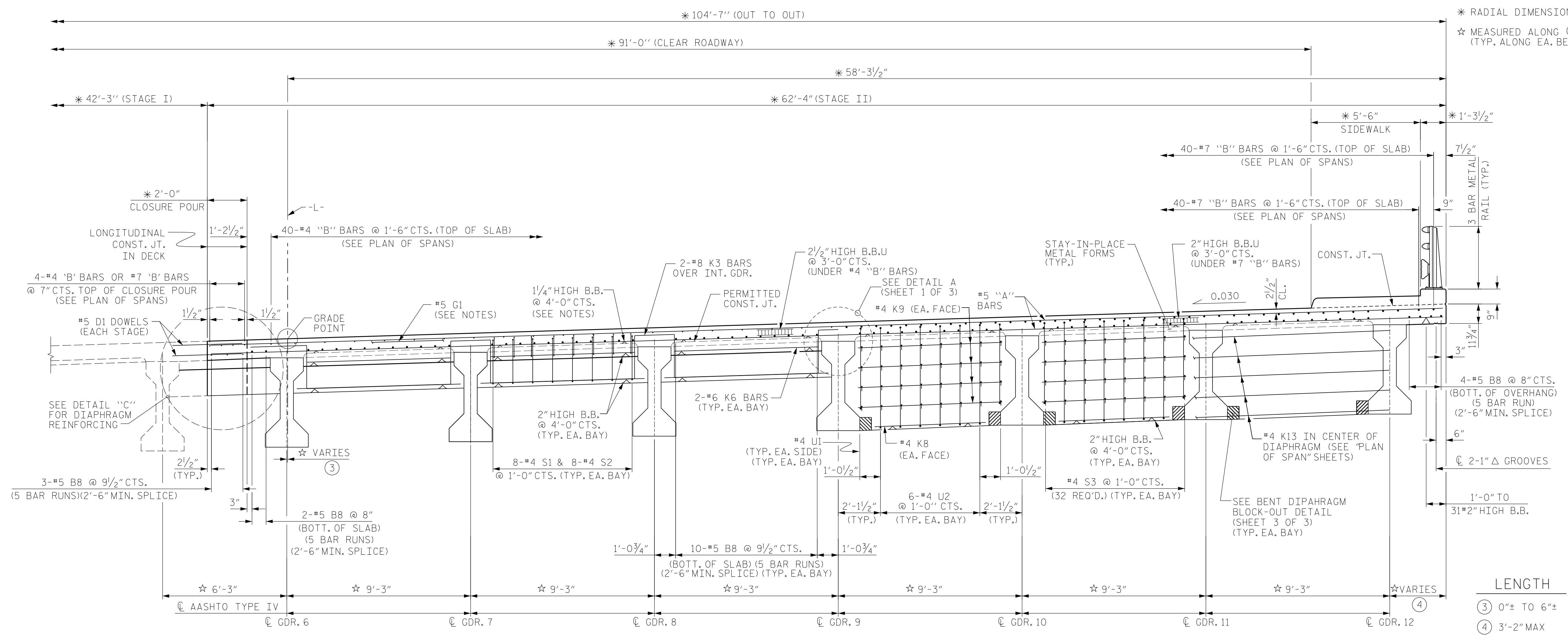


NOTES:
FOR NOTES SEE SHEET 1 OF 3
* RADIAL DIMENSIONS
☆ MEASURED ALONG @ BEARING (TYP. ALONG EA. BENT)

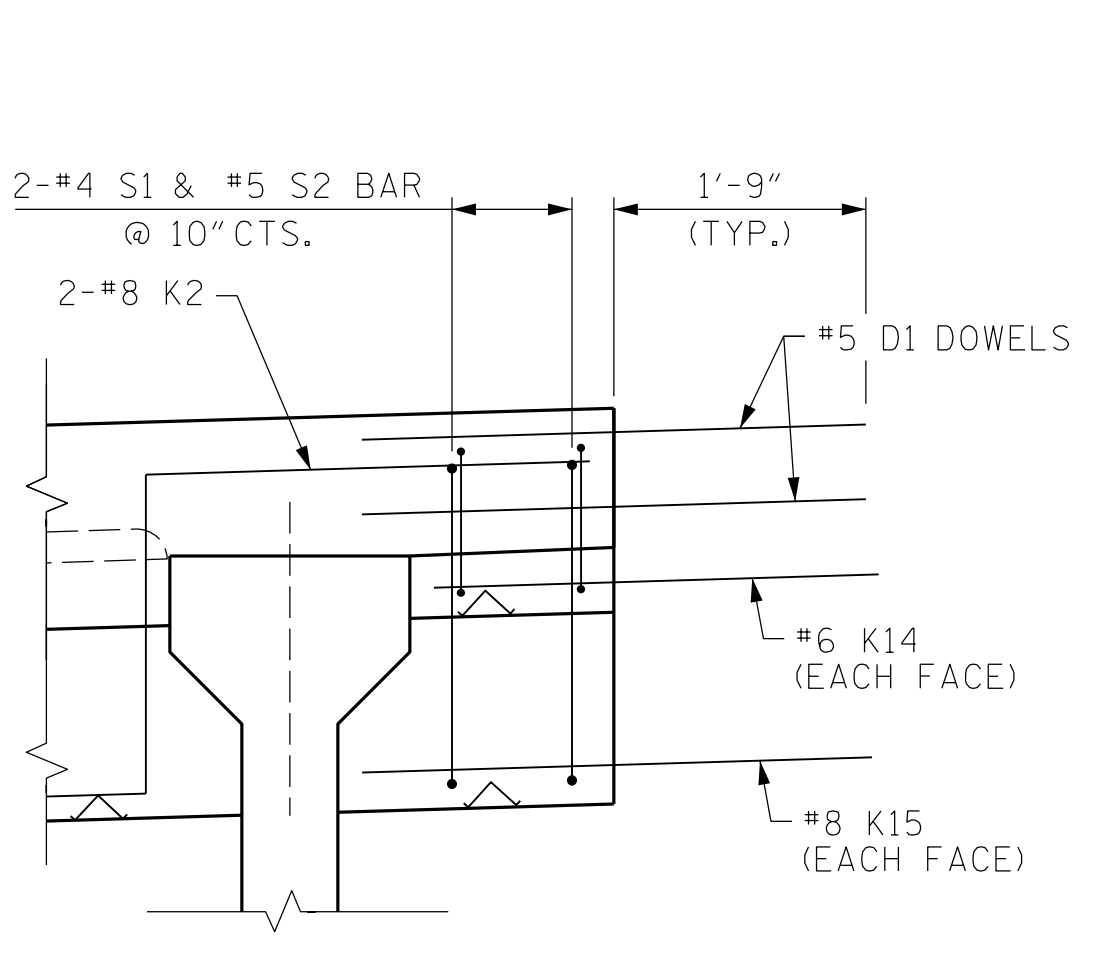


TYPICAL HALF SECTION (SHOWING END BENT DIAPHRAGMS)

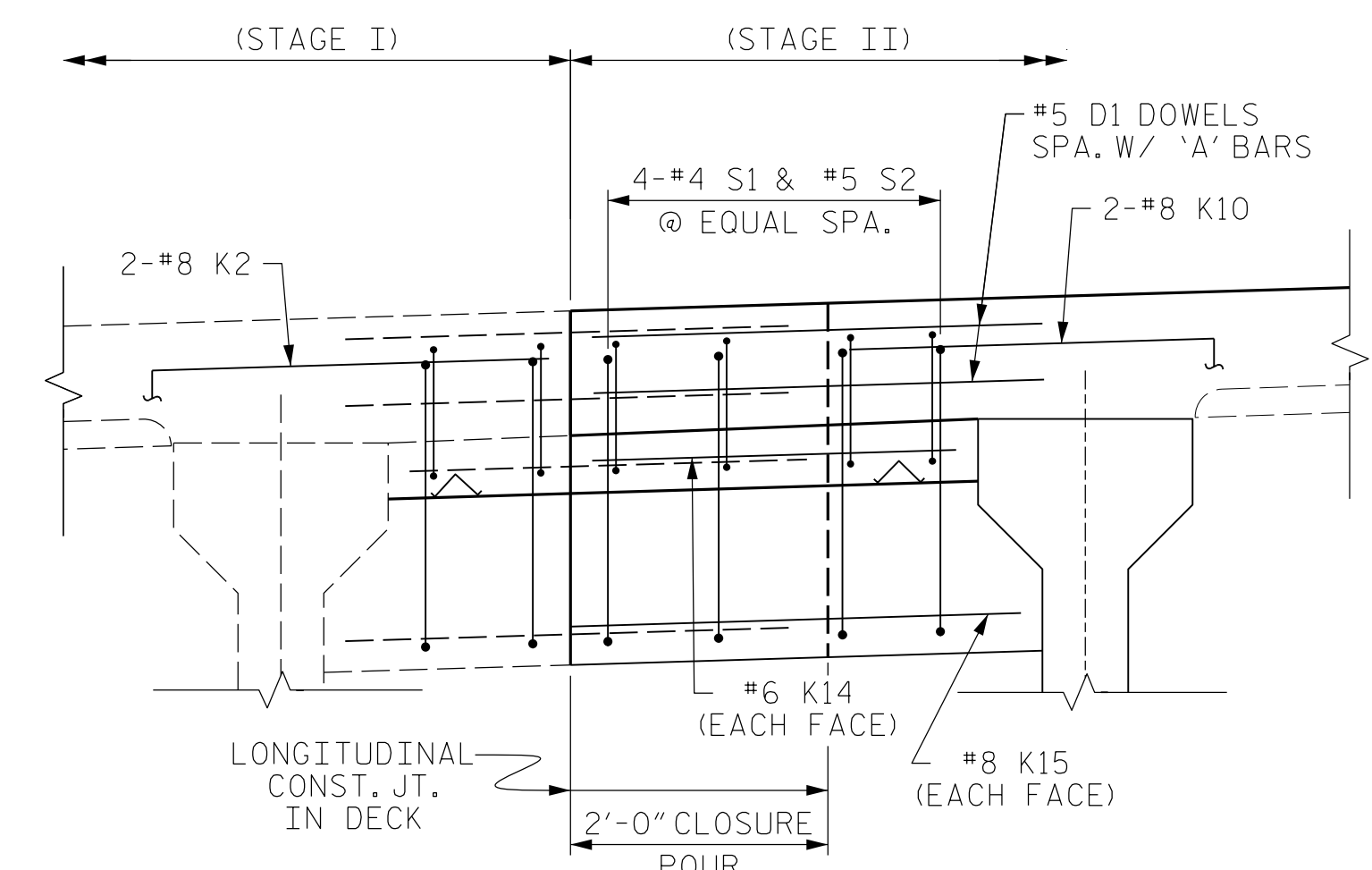
TYPICAL SECTION

TYPICAL HALF SECTION (SHOWING BENT DIAPHRAGMS)

LENGTH
③ 0" ± TO 6" ±
④ 3'-2" MAX



STAGE I CONSTRUCTION



STAGE II CONSTRUCTION

DETAIL 'C'

SHOWING END BENT DIAPHRAGM AT CLOSURE POUR (LONGITUDINAL DECK REINFORCING NOT SHOWN FOR CLARITY)

PROJECT NO. U-4910A
CABARRUS COUNTY
STATION: 147+80.00 -L-
SHEET 2 OF 3

AECOM
AECOM TECHNICAL SERVICES, INC.
701 CORPORATE CENTER DRIVE, SUITE 475
RALEIGH, NC 27607
(919) 854-6200 www.aecom.com
AECOM License No. F-0342

11/30/2016

NORTH CAROLINA PROFESSIONAL SEAL 030474

JOHN C. MORRISON
ENGINEER
A2FD0E142C82F44B

STATE OF NORTH CAROLINA
DEPARTMENT OF TRANSPORTATION
RALEIGH

SUPERSTRUCTURE
TYPICAL SECTION
AND DETAILS

REVISIONS					
NO.	BY:	DATE:	NO.	BY:	DATE:
1			3		
2			4		

SHEET NO. S-09
TOTAL SHEETS 55

DRAWN BY : N.K. BROWN DATE : 7/2016
CHECKED BY : K.H. COMPTON DATE : 7/2016
DESIGNED BY : N.K. BROWN DATE : 2/2016

DOCUMENT NOT CONSIDERED FINAL UNLESS ALL SIGNATURES COMPLETED

DATE: 11/30/2016
TIME: 10:06:06 AM

USER: N:\aecom\000...
DGN: C:\63500\1400...
Structural\CAD\DOT_J14910A_SKU_509_T_502.dgn