

NOTES:

PROVIDE 1/4" HIGH BEAM BOLSTERS UPPER AT 4'-0" CTS. ATOP THE STAY-IN-PLACE METAL FORMS TO SUPPORT THE BOTTOM MAT OF "A" BARS, WHEN USING REMOVABLE FORMS, PROVIDE CONTINUOUS HIGH CHAIRS FOR METAL DECK (C.H.C.M.) AT 4'-0" CTS. WITH A HEIGHT TO SUPPORT THE BOTTOM MAT OF "A" BARS A CLEAR DISTANCE OF 2 1/2" ABOVE THE TOP OF THE REMOVABLE FORM.

LONGITUDINAL STEEL MAY BE SHIFTED SLIGHTLY, AS NECESSARY, TO AVOID INTERFERENCE WITH STIRRUPS IN PRESTRESSED CONCRETE GIRDERS.

FOR SECTION AT INTERMEDIATE DIAPHRAGMS, SEE "INTERMEDIATE STEEL DIAPHRAGMS FOR TYPE IV PRESTRESSED CONCRETE GIRDERS".

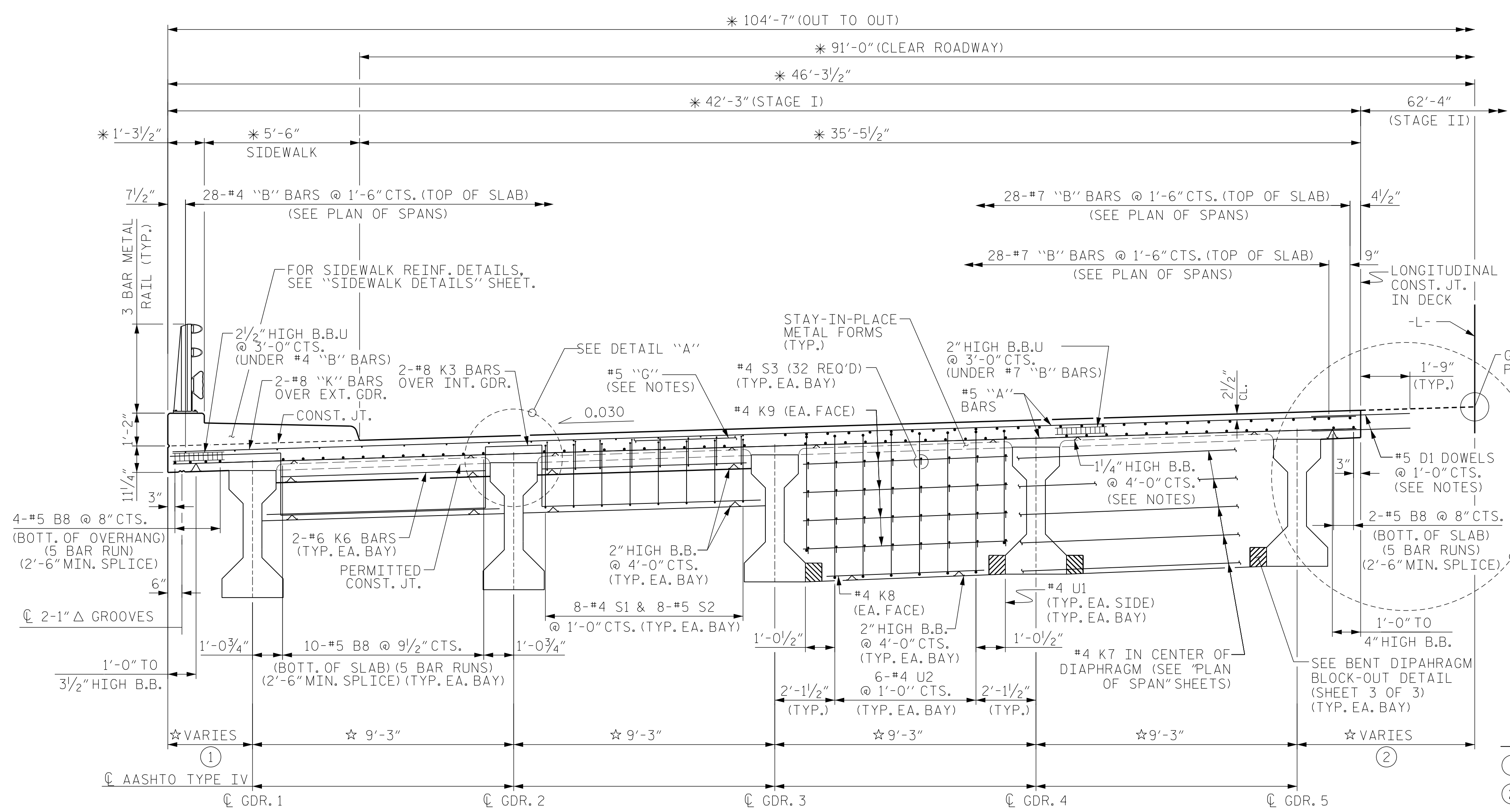
#5 D1 DOWELS SHALL BE PLACED IN THE SAME HORIZONTAL PLANE AS THE TOP AND BOTTOM SLAB REINFORCING STEEL.

FOR EACH STAGE, PREVIOUSLY CAST CONCRETE IN A CONTINUOUS UNIT SHALL HAVE ATTAINED A MINIMUM COMPRESSIVE STRENGTH OF 3,000 PSI BEFORE ADDITIONAL CONCRETE IS CAST IN THE UNIT.

#5 "G" BARS MAY BE SHIFTED SLIGHTLY AS NECESSARY TO CLEAR REINFORCING STEEL AND STIRRUPS.

THE JOINT IN THE DECK SHALL BE SAWED PRIOR TO CASTING OF SIDEWALK.

SEE CONSTRUCTION SEQUENCE SHEETS FOR LOCATION OF TEMPORARY PORTABLE CONCRETE BARRIER (ANCHORED).



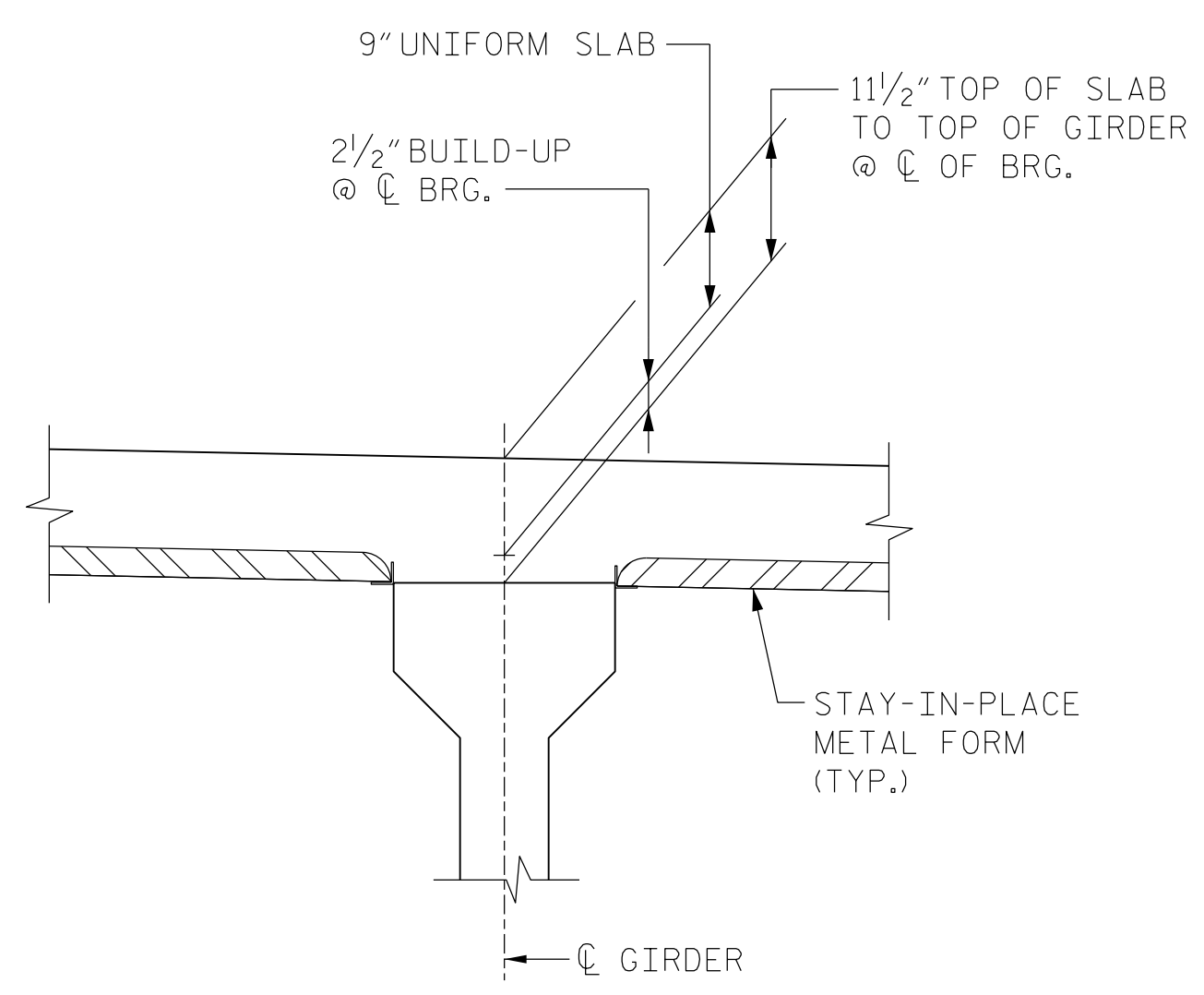
TYPICAL HALF SECTION
(SHOWING END BENT DIAPHRAGMS)

TYPICAL HALF SECTION
(SHOWING BENT DIAPHRAGMS)

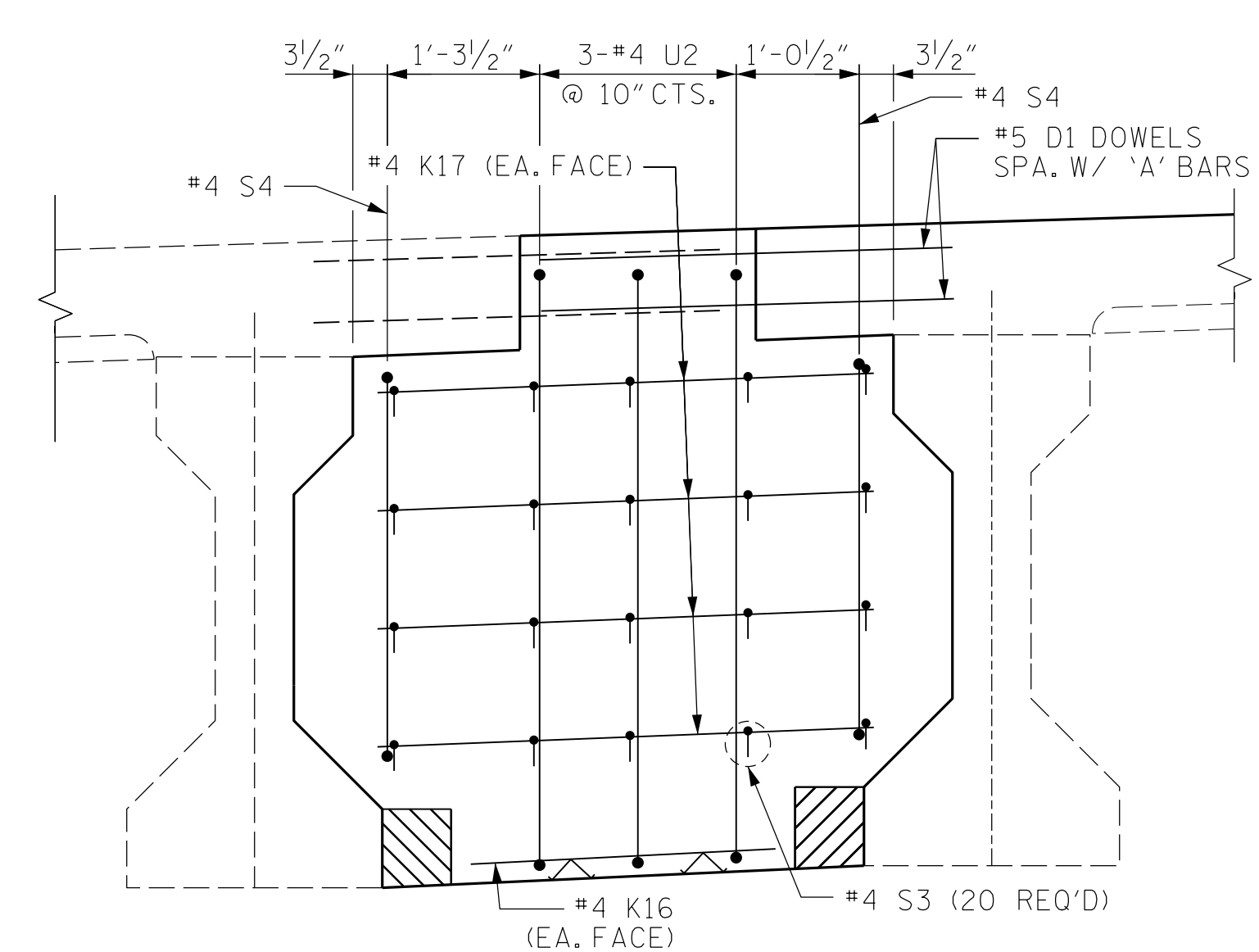
TYPICAL SECTION

- * RADIAL DIMENSION
- ☆ MEASURED ALONG CL BEARING (TYP. AT EA. BENT)

NOTE: ALL GIRDER ARE PARALLEL TO SHORT CHORD. SEE FRAMING PLAN FOR DIMENSIONS NORMAL TO CL GIRDER.

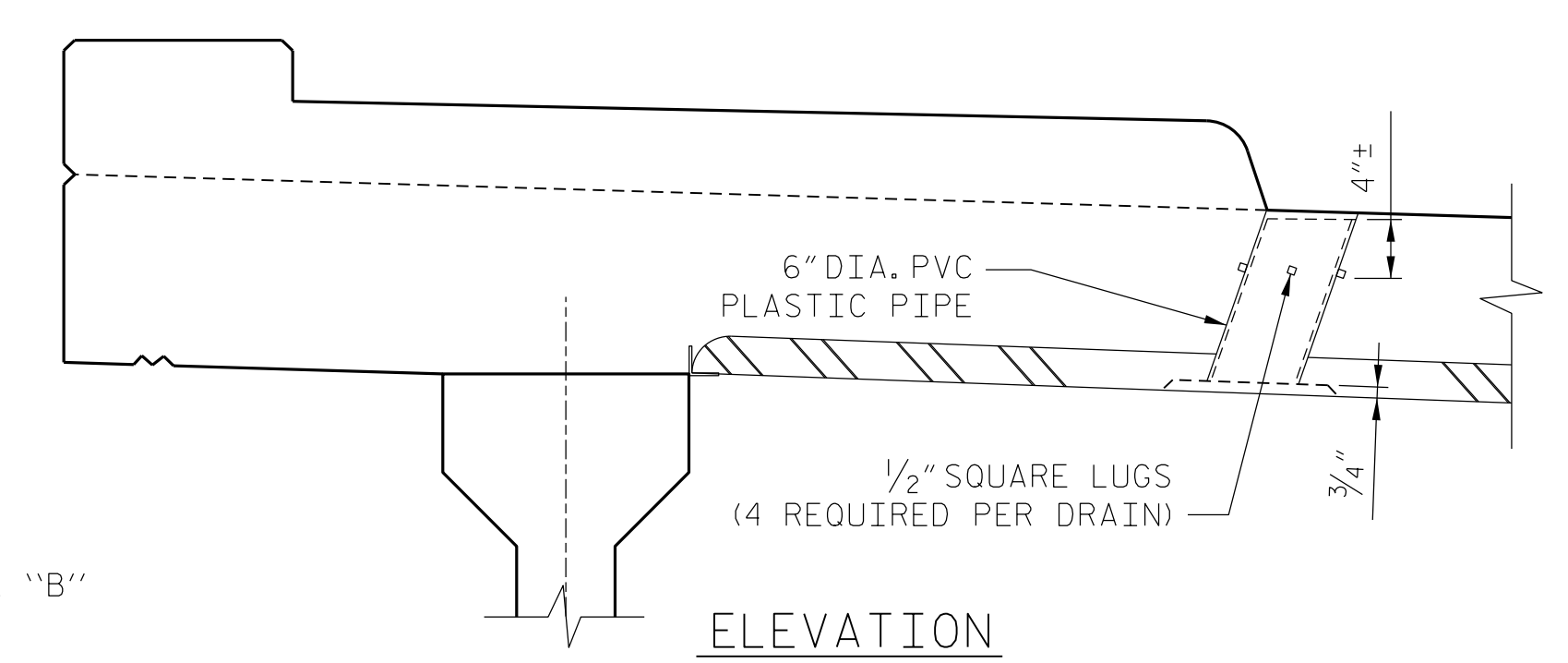


DETAIL "A"

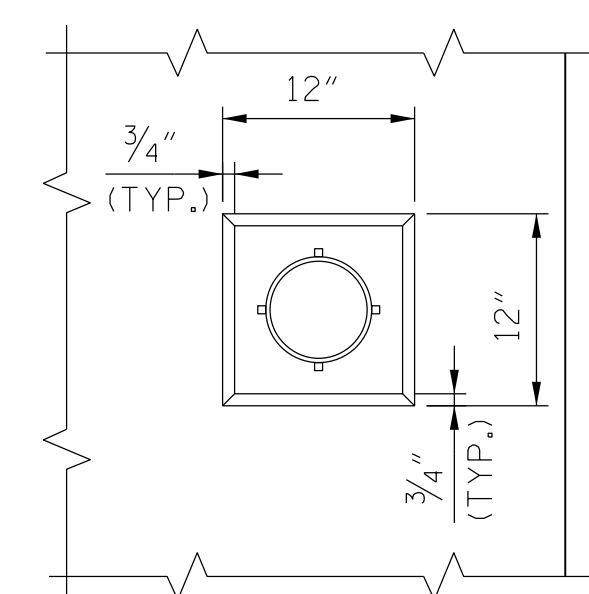


DETAIL "B"

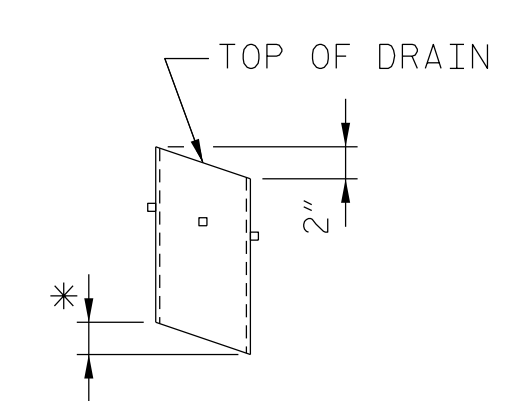
SHOWING BENT DIAPHRAGM AT CLOSURE POUR (STAGE II CONSTRUCTION)



ELEVATION



PLAN OF RECESS



PIPE DETAIL

DRAIN NOTES:

TOP OF FLOOR DRAIN TO BE SET 3/8" BELOW SURFACE OF SLAB.

4- 1/2" SQUARE LUGS TO BE GLUED TO THE PVC PLASTIC PIPE AT EQUAL SPACES AROUND THE PIPE DRAIN APPROXIMATELY 4" FROM THE TOP OF THE PIPE.

THE 6" DIA. PVC PLASTIC PIPE AND FITTINGS SHALL BE SCHEDULE 40 AND CONFORM TO ASTM D1785.

DRAIN DETAILS

PROJECT NO. U-4910A
CABARRUS COUNTY

STATION: 147+80.00 -L-

SHEET 1 OF 3

AECOM
AECOM TECHNICAL SERVICES, INC.
701 CORPORATE CENTER DRIVE, SUITE 475
RALEIGH, NC 27607
(919) 854-6200 www.aecom.com
AECOM License No. F-0342

11/30/2016

NORTH CAROLINA PROFESSIONAL SEAL
030474
JOHN B. MORRISON
ENGINEER
A2F0E143C2F44B

STATE OF NORTH CAROLINA
DEPARTMENT OF TRANSPORTATION
RALEIGH

SUPERSTRUCTURE
TYPICAL SECTION
AND DETAILS

REVISIONS						SHEET NO.
NO.	BY:	DATE:	NO.	BY:	DATE:	S-08
1			3			TOTAL SHEETS
2			4			55

DOCUMENT NOT CONSIDERED FINAL UNLESS ALL SIGNATURES COMPLETED

DATE: 11/30/2016
TIME: 10:56:01 AM

USER: H:\aecom\030474\1400_Technical\408_Structural\Comp\401_015_U4910A_SML_508_L150.dgn

DRAWN BY : N.K. BROWN DATE : 7/20/16
CHECKED BY : K.H. COMPTON DATE : 7/20/16
DESIGNED BY : N.K. BROWN DATE : 2/2/2016