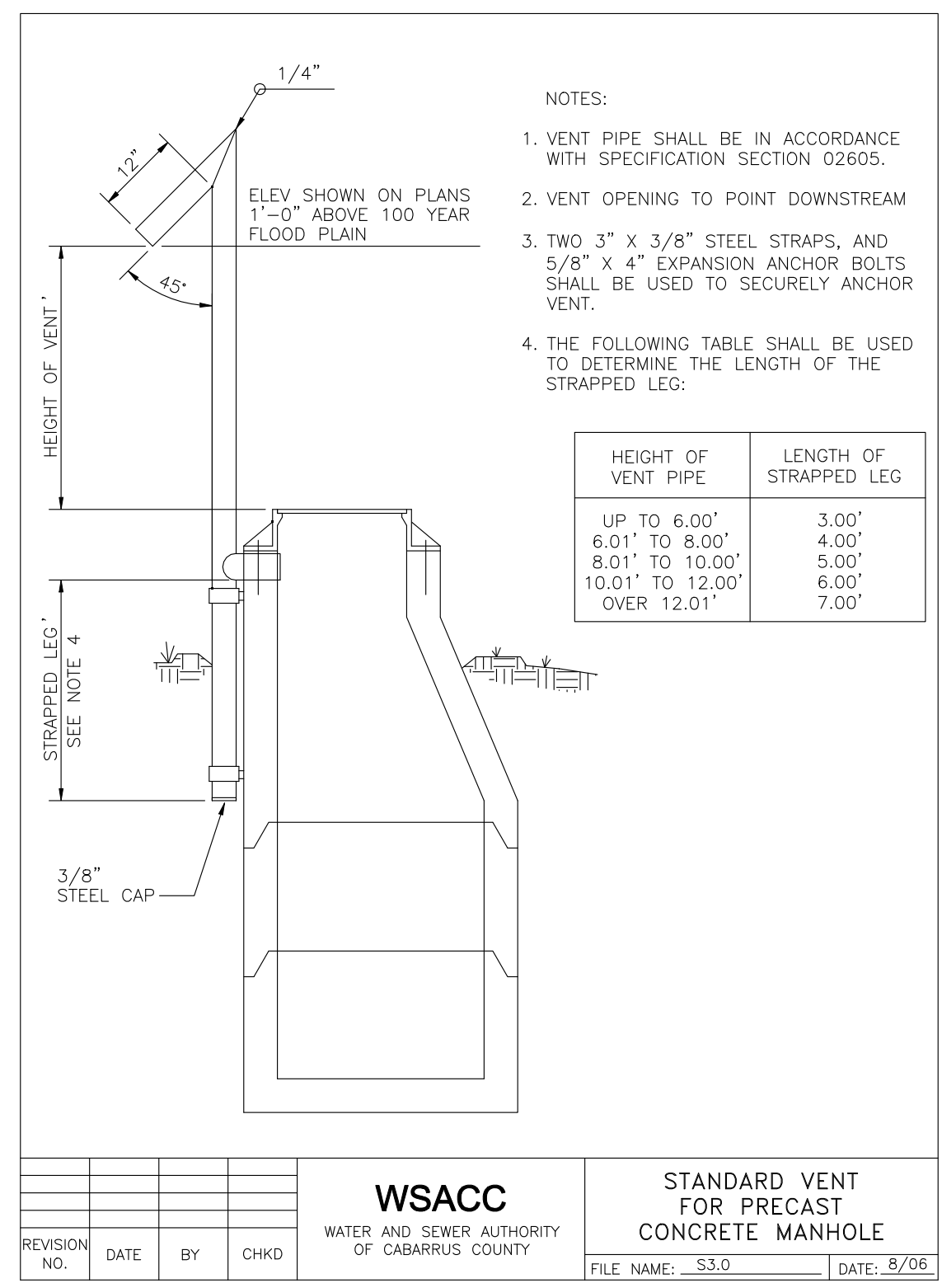
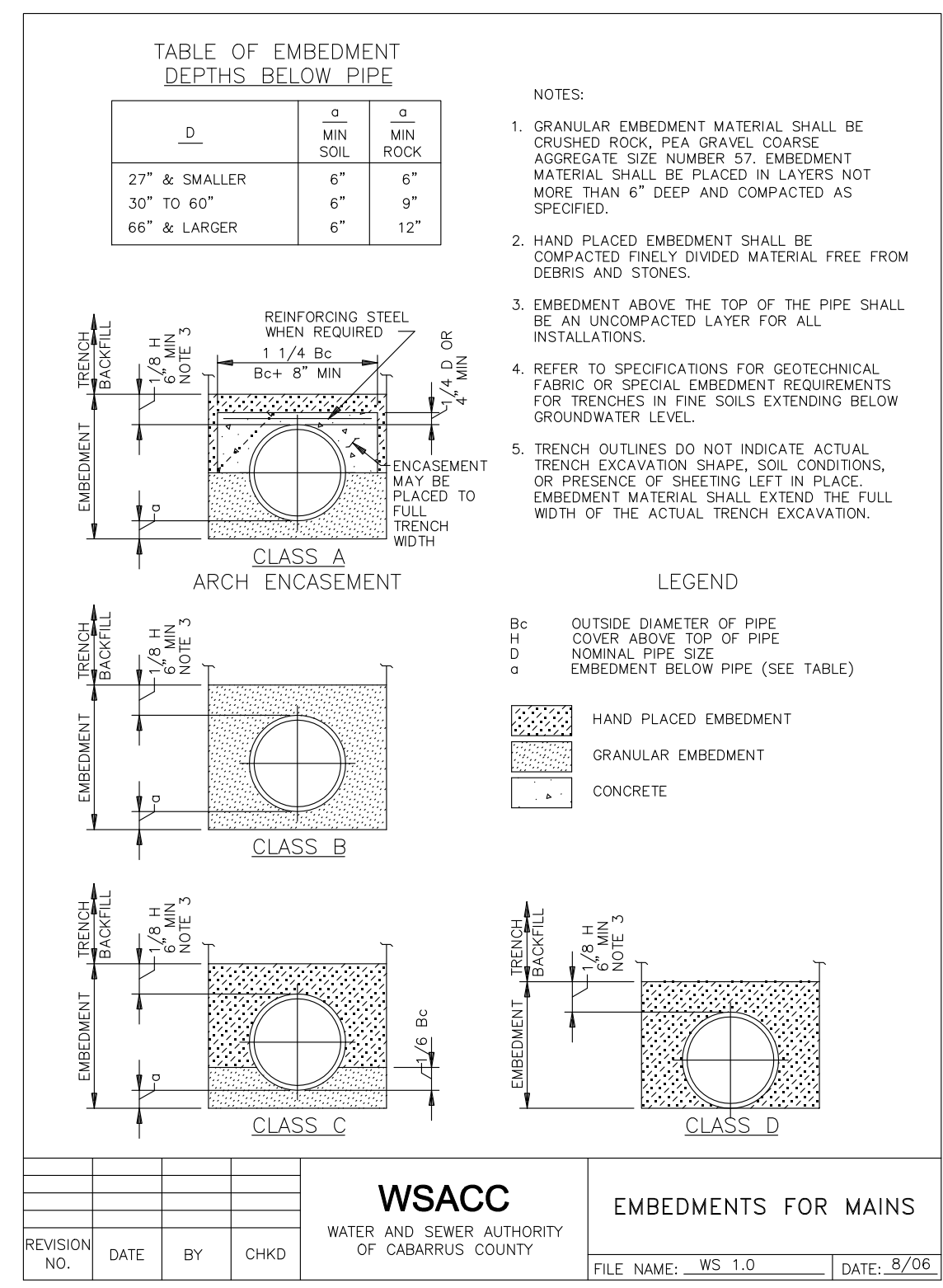


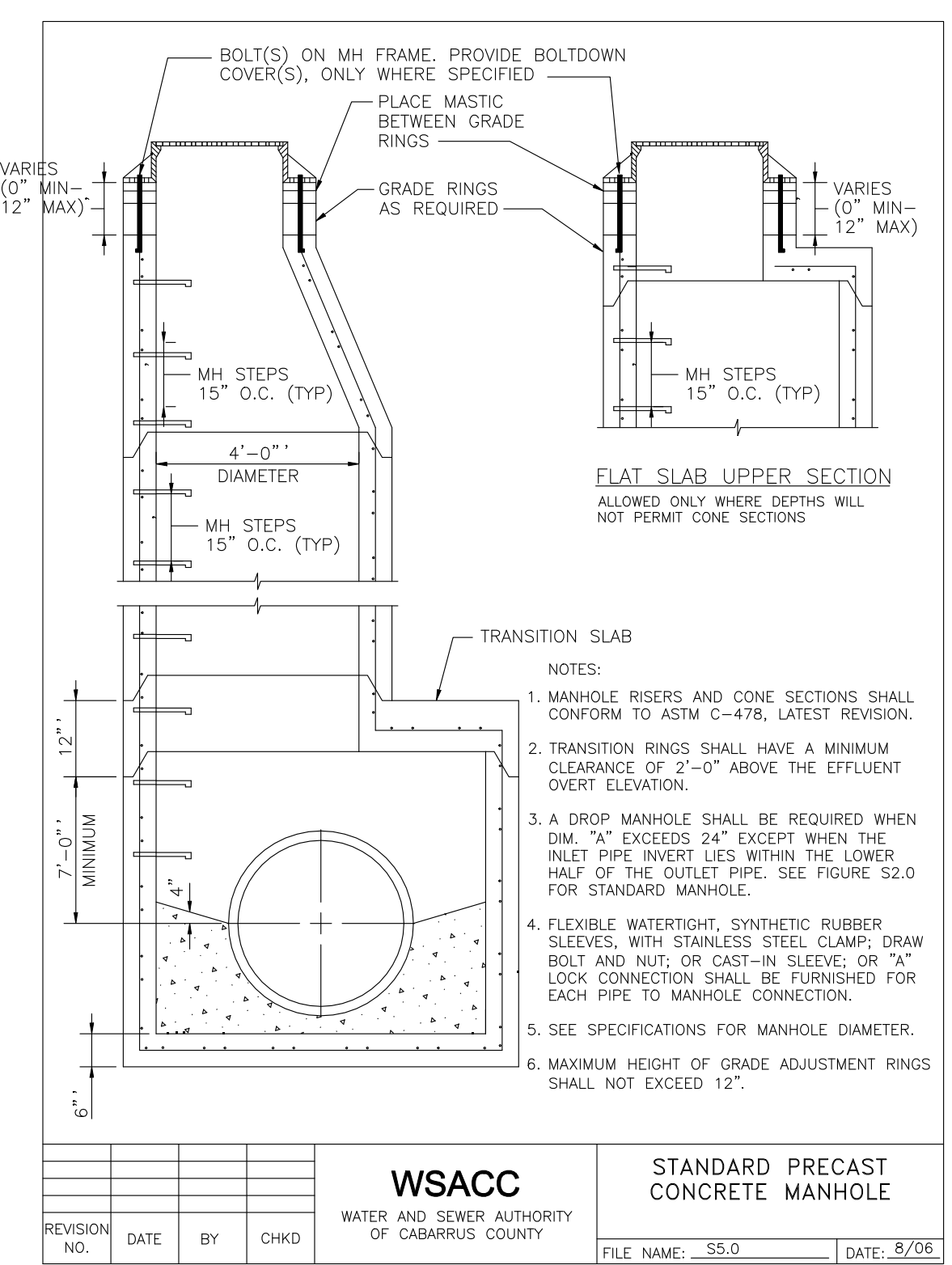
<b>WSACC</b>				<b>STANDARD PRECAST CONCRETE MANHOLE</b>	
WATER AND SEWER AUTHORITY OF CABARRUS COUNTY				FILE NAME: S2.0 DATE: 8/06	
REVISION NO.	DATE	BY	CHKD		



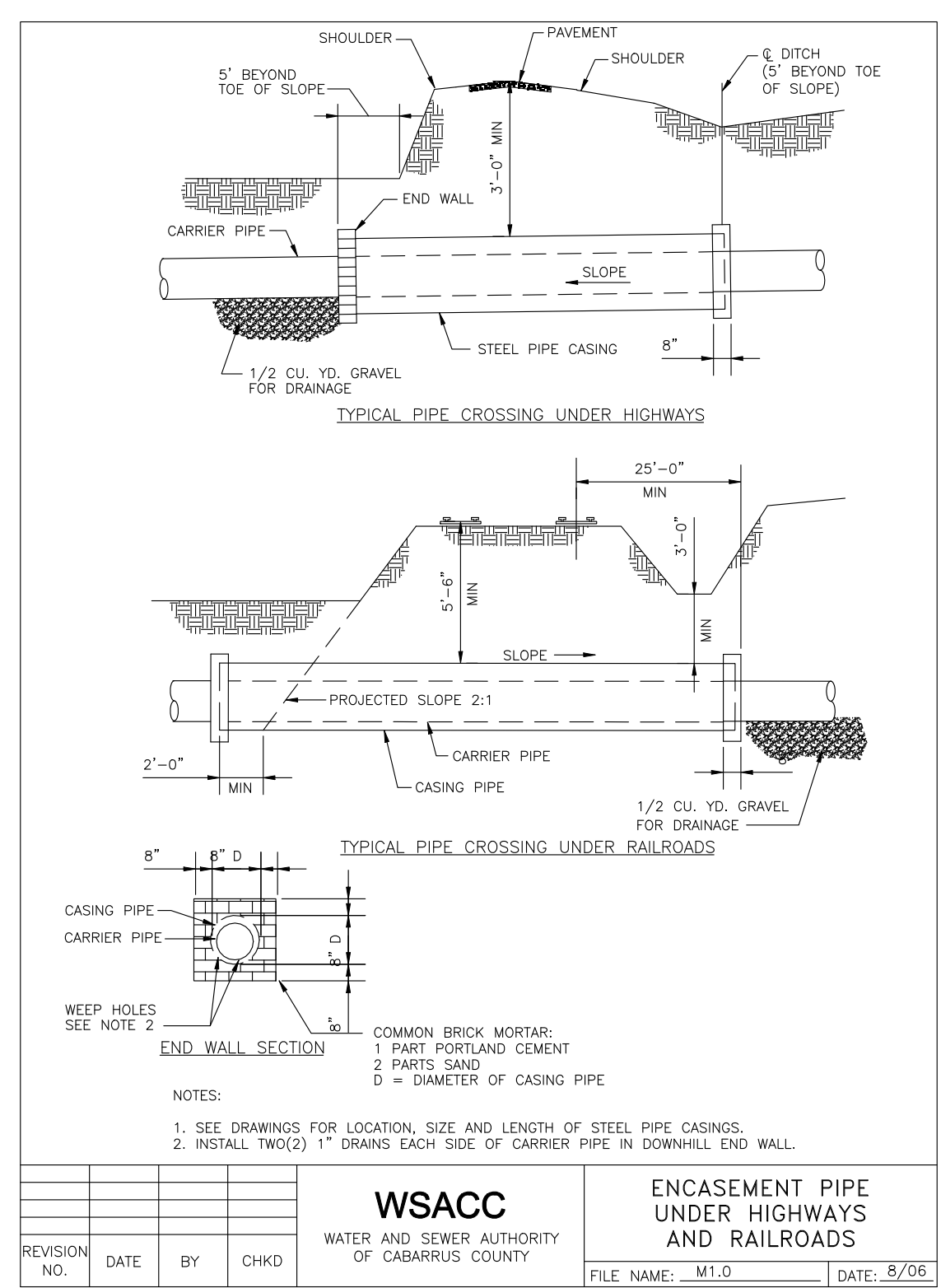
<b>WSACC</b>				<b>STANDARD VENT FOR PRECAST CONCRETE MANHOLE</b>	
WATER AND SEWER AUTHORITY OF CABARRUS COUNTY				FILE NAME: S3.0 DATE: 8/06	
REVISION NO.	DATE	BY	CHKD		



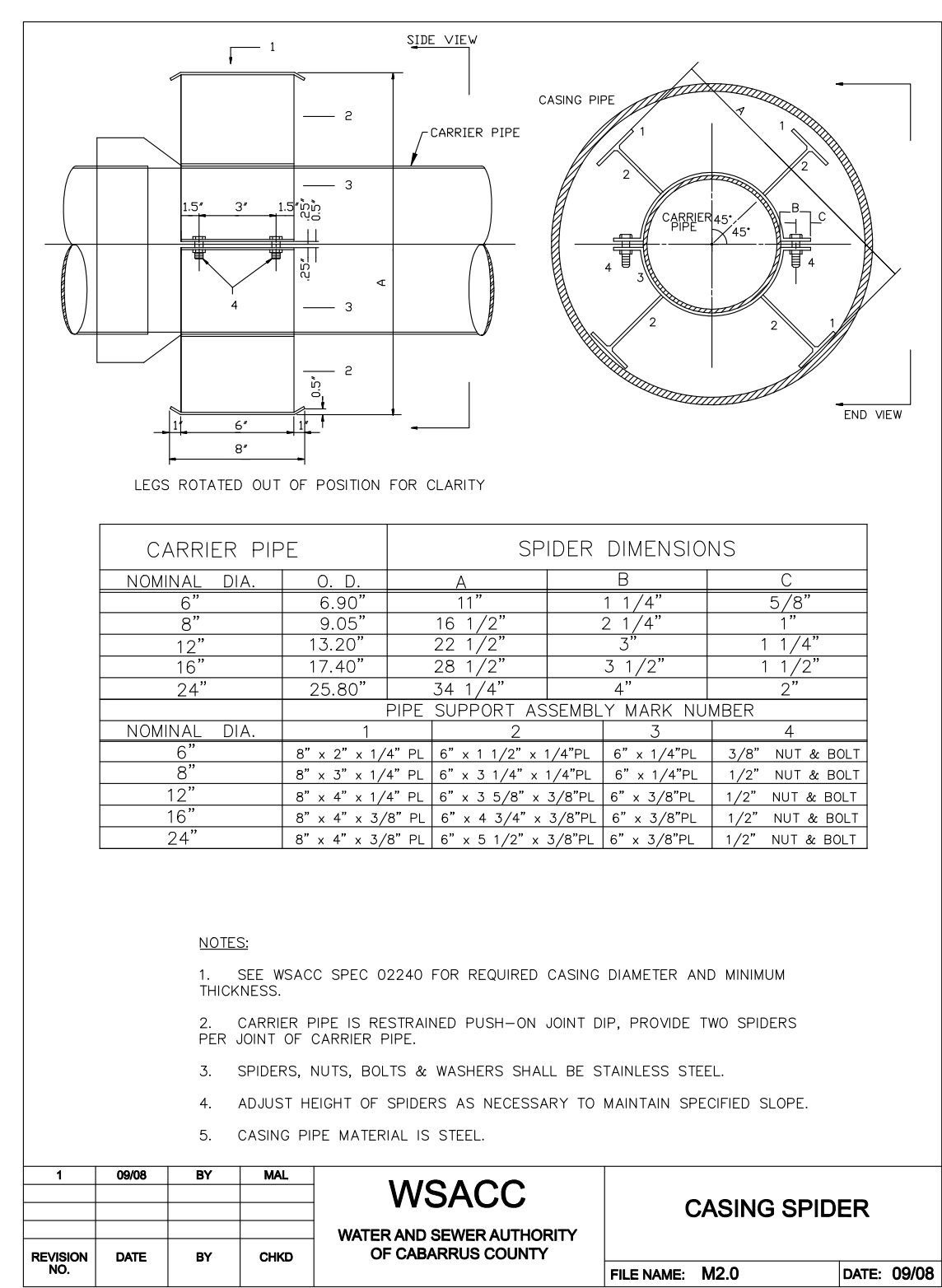
<b>WSACC</b>				<b>EMBEDMENTS FOR MAINS</b>	
WATER AND SEWER AUTHORITY OF CABARRUS COUNTY				FILE NAME: WS.1.0 DATE: 8/06	
REVISION NO.	DATE	BY	CHKD		



<b>WSACC</b>				<b>STANDARD PRECAST CONCRETE MANHOLE</b>	
WATER AND SEWER AUTHORITY OF CABARRUS COUNTY				FILE NAME: S5.0 DATE: 8/06	
REVISION NO.	DATE	BY	CHKD		



<b>WSACC</b>				<b>ENCASMENT PIPE UNDER HIGHWAYS AND RAILROADS</b>	
WATER AND SEWER AUTHORITY OF CABARRUS COUNTY				FILE NAME: M1.0 DATE: 8/06	
REVISION NO.	DATE	BY	CHKD		

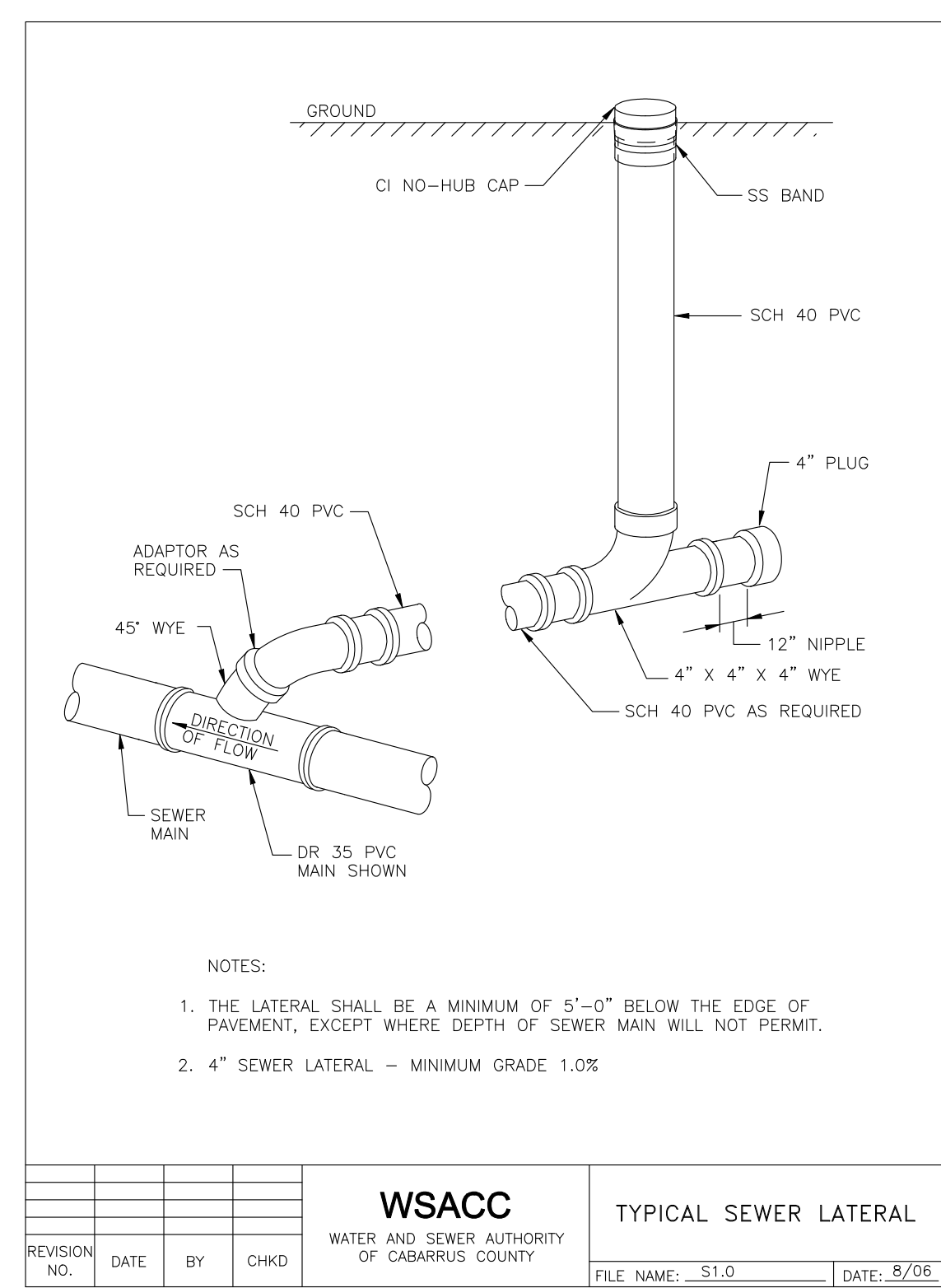


NOMINAL DIA.	O. D.	SPIDER DIMENSIONS		
		A	B	C
6"	6.30"	11"	1 1/4"	5/8"
8"	9.05"	16 1/2"	2 1/4"	1"
12"	13.20"	22 1/2"	3"	1 1/4"
16"	17.40"	28 1/2"	3 1/2"	1 1/2"
24"	25.80"	34 1/4"	4"	2"

NOMINAL DIA.	PIPE SUPPORT ASSEMBLY MARK NUMBER			
	1	2	3	4
6"	8" x 2" x 1/4" PL	6" x 1 1/2" x 1/4" PL	6" x 1/4" PL	3/8" NUT & BOLT
8"	8" x 3" x 1/4" PL	6" x 3 1/4" x 1/4" PL	6" x 1/4" PL	1/2" NUT & BOLT
12"	8" x 4" x 1/4" PL	6" x 3 5/8" x 3/8" PL	6" x 3/8" PL	1/2" NUT & BOLT
16"	8" x 4" x 3/8" PL	6" x 4 3/4" x 3/8" PL	6" x 3/8" PL	1/2" NUT & BOLT
24"	8" x 4" x 3/8" PL	6" x 5 1/2" x 3/8" PL	6" x 3/8" PL	1/2" NUT & BOLT

<b>WSACC</b>				<b>CASING SPIDER</b>	
WATER AND SEWER AUTHORITY OF CABARRUS COUNTY				FILE NAME: M2.0 DATE: 09/08	
REVISION NO.	DATE	BY	CHKD		



<b>WSACC</b>				<b>TYPICAL SEWER LATERAL</b>	
WATER AND SEWER AUTHORITY OF CABARRUS COUNTY				FILE NAME: S1.0 DATE: 8/06	
REVISION NO.	DATE	BY	CHKD		

Revisions:

DWG: u4910\_uc\_s010213.dgn  
USER: sw/hsong  
DATE: 1/11/2017  
TIME: 12:31:50 PM