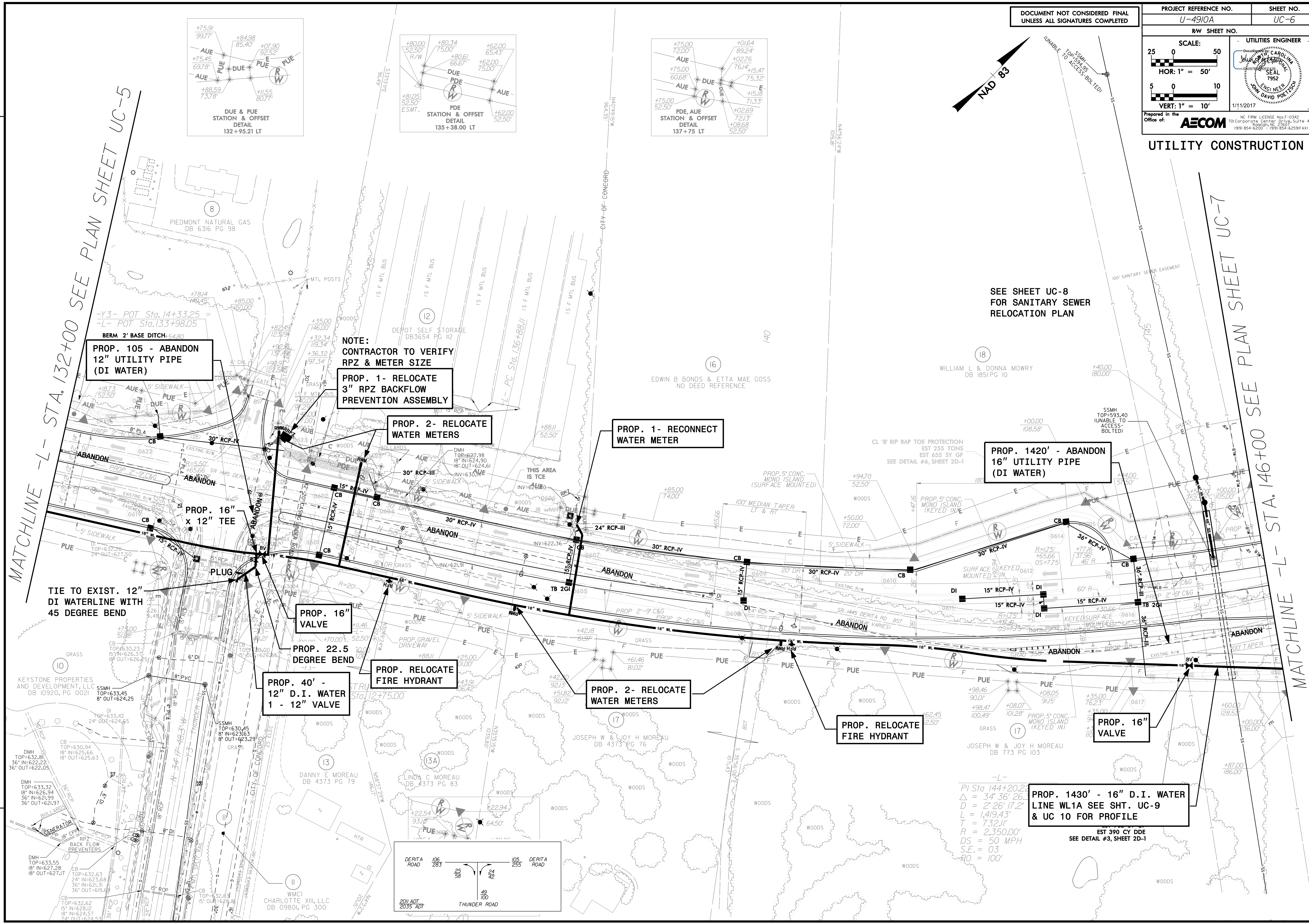


DOCUMENT NOT CONSIDERED FINAL
UNLESS ALL SIGNATURES COMPLETED

PROJECT REFERENCE NO. U-4910A	SHEET NO. UC-6
RW SHEET NO.	
SCALE: 25 0 50 HOR: 1" = 50' 5 0 10 VERT: 1" = 10'	UTILITIES ENGINEER
Prepared in the Office of: AECOM NC FIRM LICENSE No. F-0342 701 Corporate Center Drive, Suite 475 Raleigh, NC 27607 (919) 854-6200 • (919) 854-6259(FAX)	

UTILITY CONSTRUCTION



**PROP. 105 - ABANDON
12" UTILITY PIPE
(DI WATER)**

**NOTE:
CONTRACTOR TO VERIFY
RPZ & METER SIZE**
**PROP. 1- RELOCATE
3" RPZ BACKFLOW
PREVENTION ASSEMBLY**

**PROP. 2- RELOCATE
WATER METERS**

**PROP. 1- RECONNECT
WATER METER**

**PROP. 1420' - ABANDON
16" UTILITY PIPE
(DI WATER)**

**TIE TO EXIST. 12"
DI WATERLINE WITH
45 DEGREE BEND**

PROP. 16" VALVE

**PROP. 22.5
DEGREE BEND**

**PROP. 40' -
12" D.I. WATER
1 - 12" VALVE**

**PROP. RELOCATE
FIRE HYDRANT**

**PROP. 2- RELOCATE
WATER METERS**

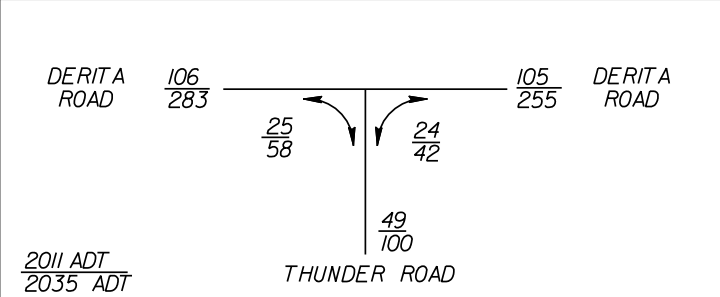
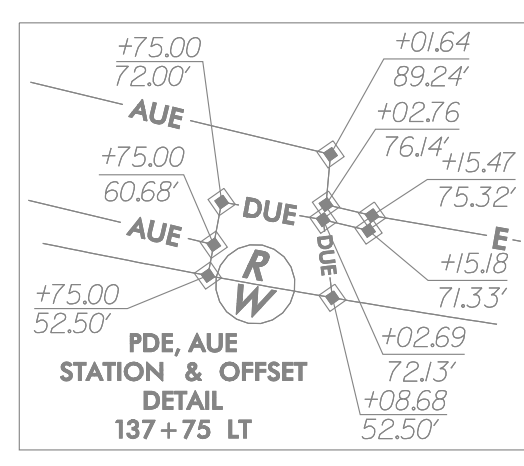
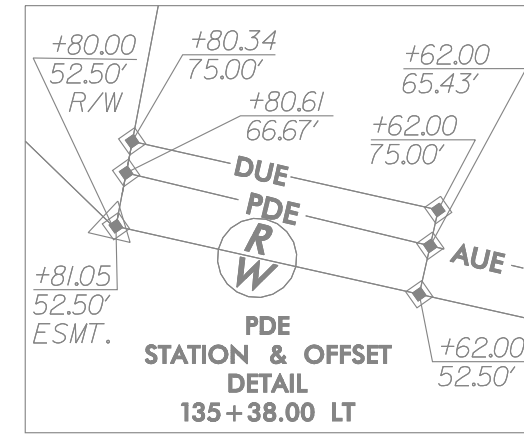
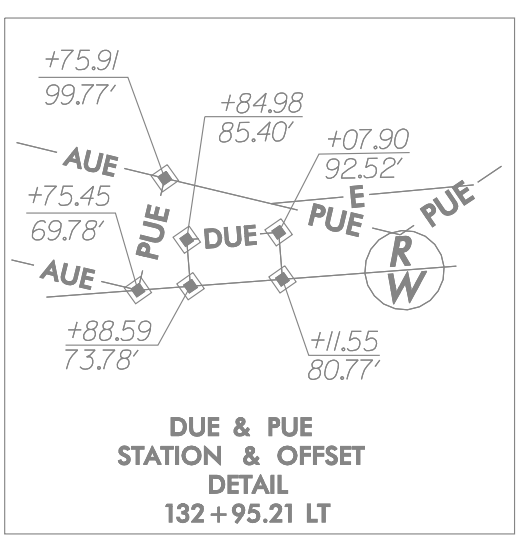
**PROP. RELOCATE
FIRE HYDRANT**

PROP. 16" VALVE

**PROP. 1430' - 16" D.I. WATER
LINE WL1A SEE SHT. UC-9
& UC 10 FOR PROFILE**

$PI\ Sta\ 144+20.2$
 $\Delta = 34' 36" 26"$
 $D = 2' 26" 17.2"$
 $L = 1419.43'$
 $T = 732.11'$
 $R = 2,350.00'$
 $DS = 50\ MPH$
 $SE = 03$
 $RO = 100'$

EST 390 CY DDE
SEE DETAIL #3, SHEET 2D-1



REVISIONS

Revisions:
 DWN: u4910_uc_06026.dgn
 USER: swinsong
 DATE: 1/11/2017
 TIME: 12:20:07 PM

MATCHLINE - L- STA. 132+00 SEE PLAN SHEET UC-5

MATCHLINE - L- STA. 146+00 SEE PLAN SHEET UC-7