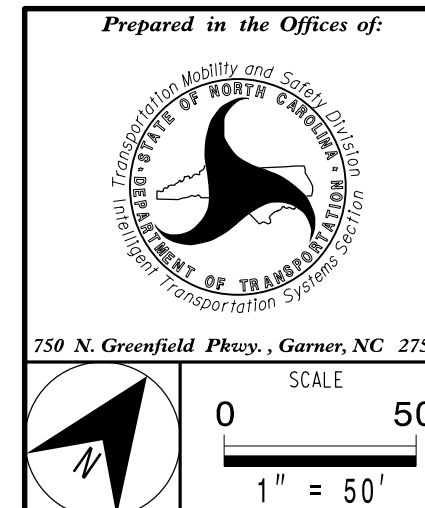


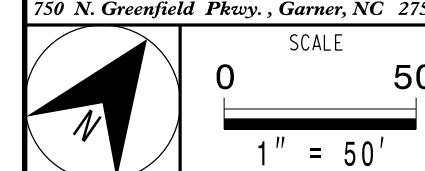
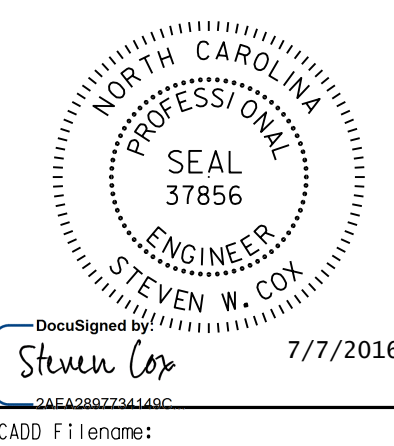
NOTES:

- 1. ALL NCDOT CABLE ATTACHMENT POINTS ARE 40" BELOW POWER, FRONT SIDE OF POLE, UNLESS OTHERWISE NOTED.
- 2. REMOVE AND RETURN EXISTING WIRELESS EQUIPMENT TO THE CITY OF CONCORD.

DOCUMENT NOT CONSIDERED FINAL UNLESS ALL SIGNATURES COMPLETED



| | |
|---|----------------------------|
| COMMUNICATIONS CABLE AND CONDUIT ROUTING PLANS | |
| Division 10 Cabarrus County | Concord |
| PLAN DATE: June 2016 | REVIEWED BY: C.L. Kalencik |
| PREPARED BY: S.W. COX | REVIEWED BY: |
| REVISIONS | INIT. DATE |
| | |
| | |
| | |



CADD Filename: