

STATE OF NORTH CAROLINA  
DEPT. OF TRANSPORTATION  
DIVISION OF HIGHWAYS  
RALEIGH, N.C.

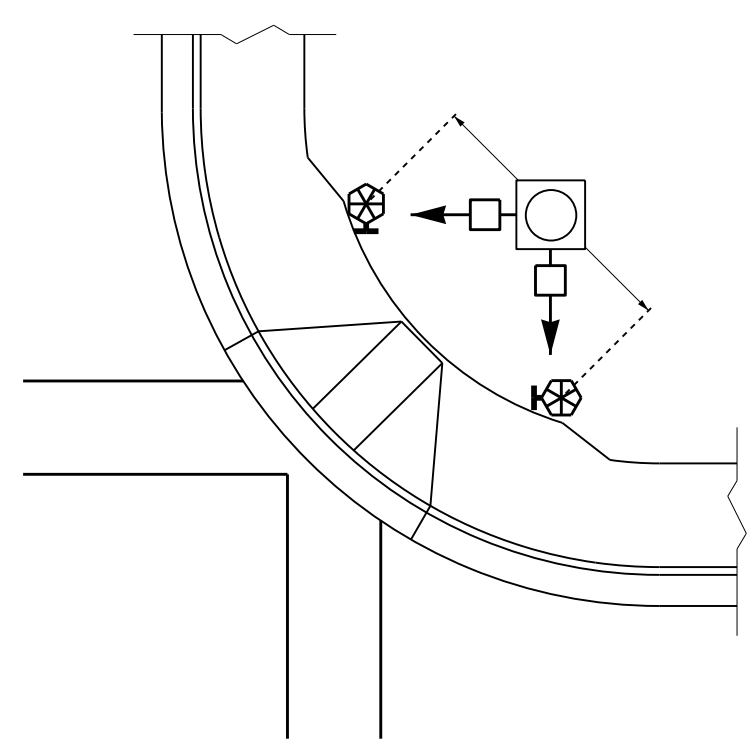
06-14

ENGLISH DETAIL DRAWING FOR  
**PEDESTRIAN PUSHBUTTON LOCATIONS**  
PLACEMENT DETAIL

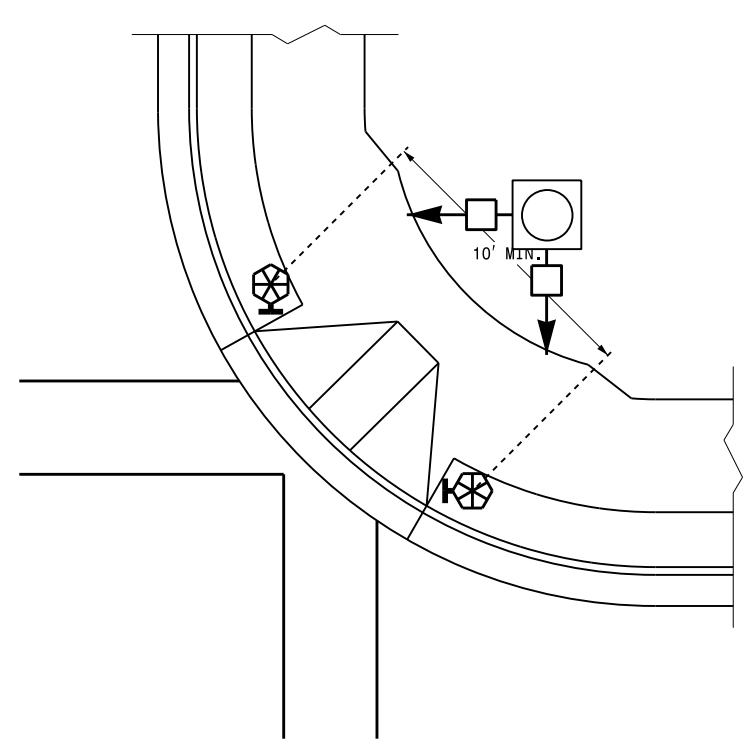
SHEET 3 OF 3  
**1705D01**

**TYPICAL PUSHBUTTON LOCATIONS (CASE III)**

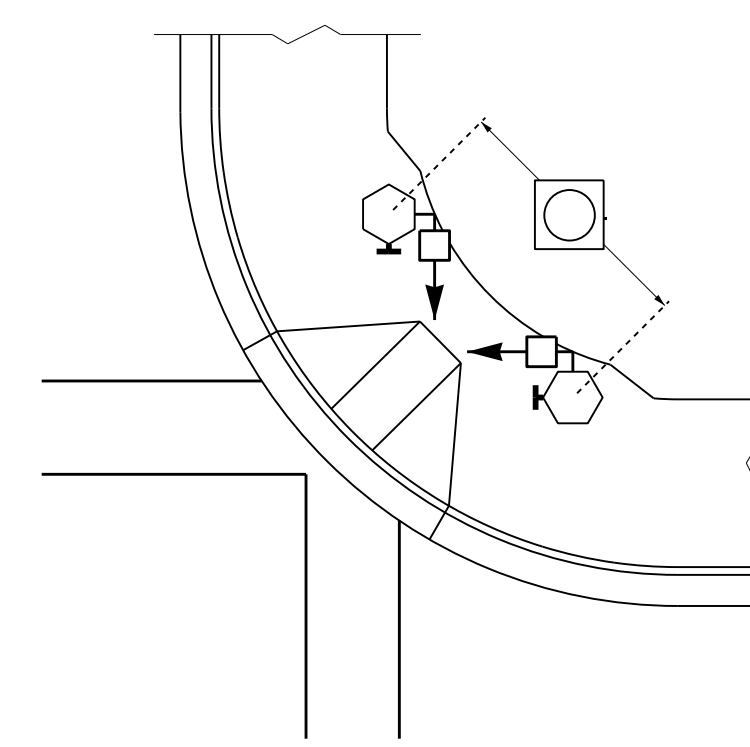
SHARED CURB RAMPS



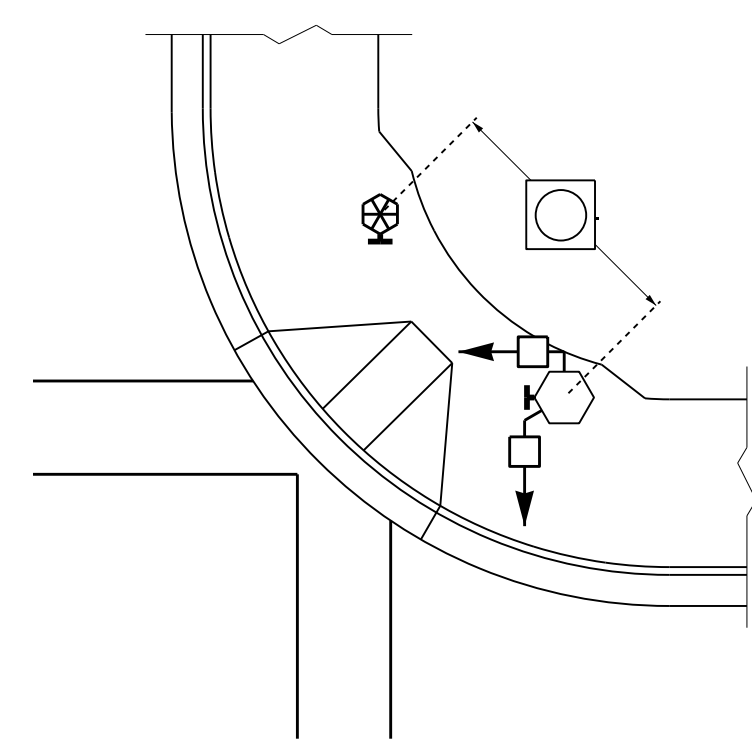
BACK OF SIDEWALK IS WITHIN 10' OF CURB OR PAVEMENT/SHOULDER



GRASS STRIP PLACEMENT IF BACK OF SIDEWALK EXCEEDS 10' FROM CURB OR PAVEMENT/SHOULDER

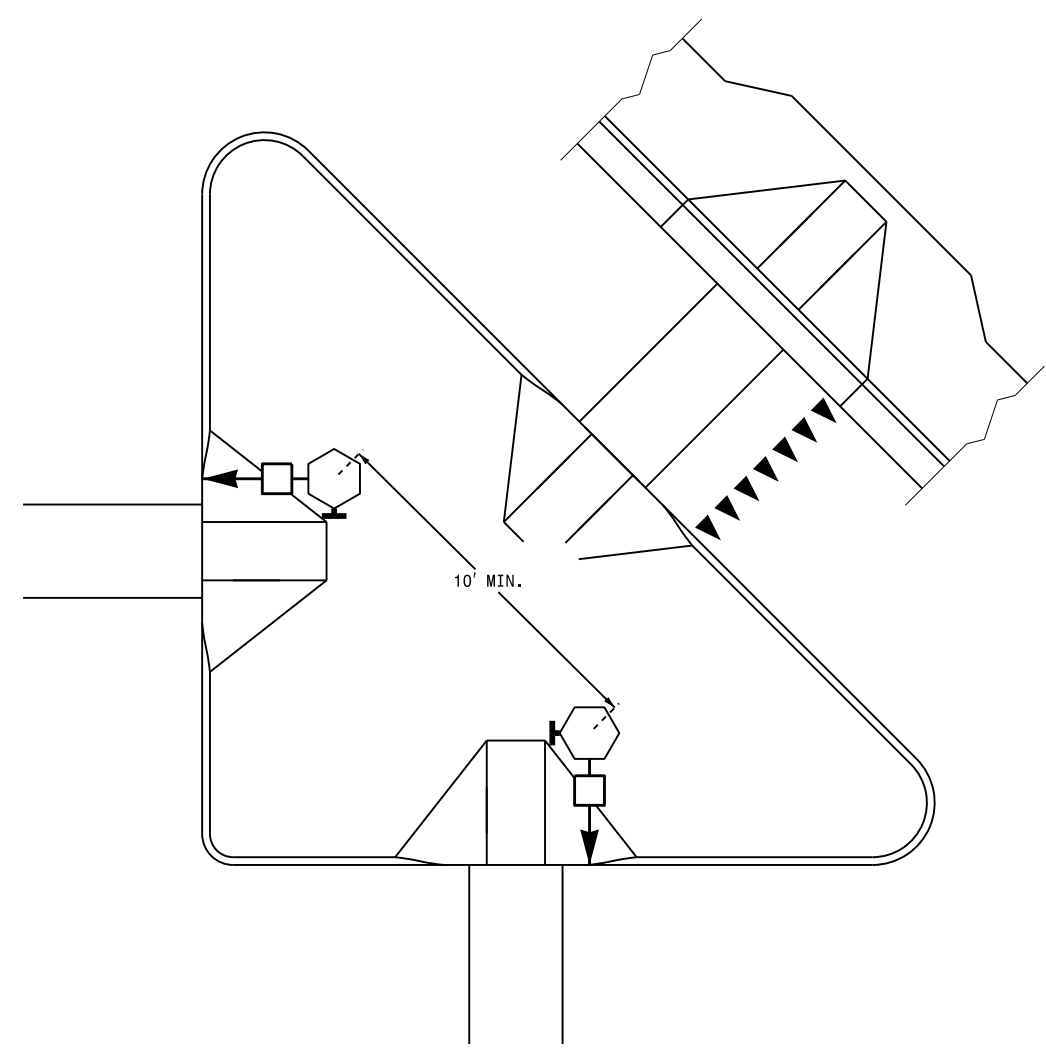


PUSHBUTTON PLACEMENT IN WIDE SIDEWALK (CORRESPONDING PUSHBUTTONS AND SIGNAL HEADS ON DIFFERENT PEDESTALS)

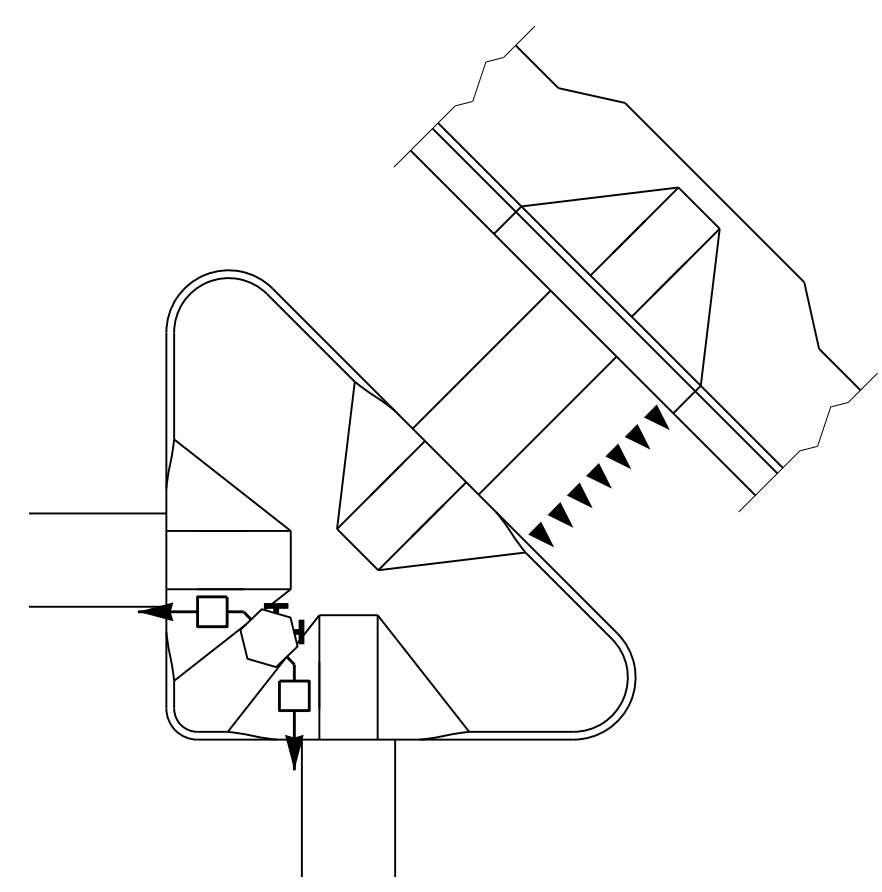


PUSHBUTTON PLACEMENT WITH SHARED TYPE II SIGNAL PEDESTAL AND TYPE I PUSHBUTTON POST

**TRAFFIC ISLAND PUSHBUTTON LOCATIONS**



PUSHBUTTON PLACEMENT IN LARGE "PORK CHOP ISLAND" WITH SEPARATE PEDESTALS



PUSHBUTTON PLACEMENT IN SMALL "PORK CHOP ISLAND" WITH SHARED PEDESTAL

**PUSHBUTTON PLACEMENT IN MEDIAN**

TYPE II PEDESTAL (FOR STAGED OR MULTI-PHASE CROSSING)

TYPE I PEDESTAL (FOR COMPLETE CROSSING CURB TO CURB WITH OPTIONAL REFUGE)

**PROPOSED**

- Signal Pole
- Type I Pushbutton Post
- Type II Signal Pedestal
- Pushbutton & Sign
- Pedestrian Signal Head
- Curb Ramp
- Pushbutton Location Area

**LEGEND**

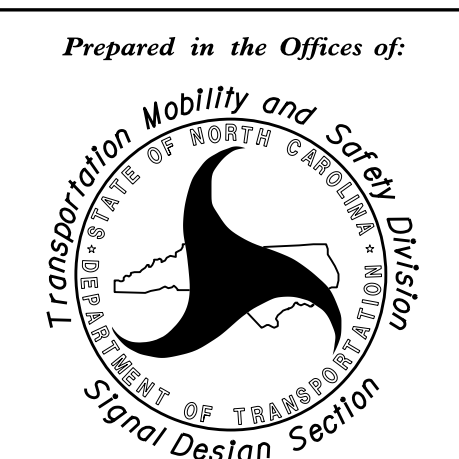
STATE OF NORTH CAROLINA  
DEPT. OF TRANSPORTATION  
DIVISION OF HIGHWAYS  
RALEIGH, N.C.

06-14

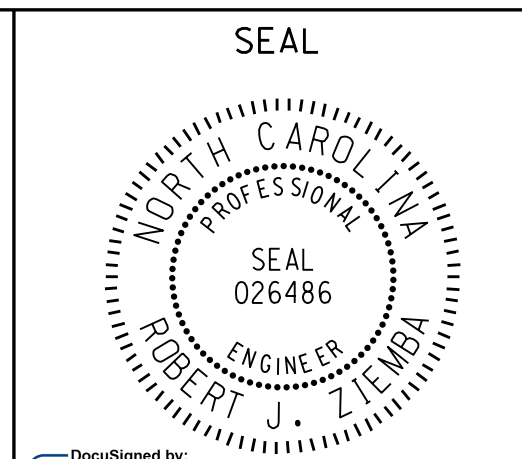
ENGLISH DETAIL DRAWING FOR  
**PEDESTRIAN PUSHBUTTON LOCATIONS**  
PLACEMENT DETAIL

SHEET 3 OF 3  
**1705D01**

See Plate for Title



750 N. Greenfield Parkway  
Garner, NC 27529



DocuSigned by:  
*Robert J. Ziemba*  
10004582745404  
SIGNATURE DATE

6/17/2014