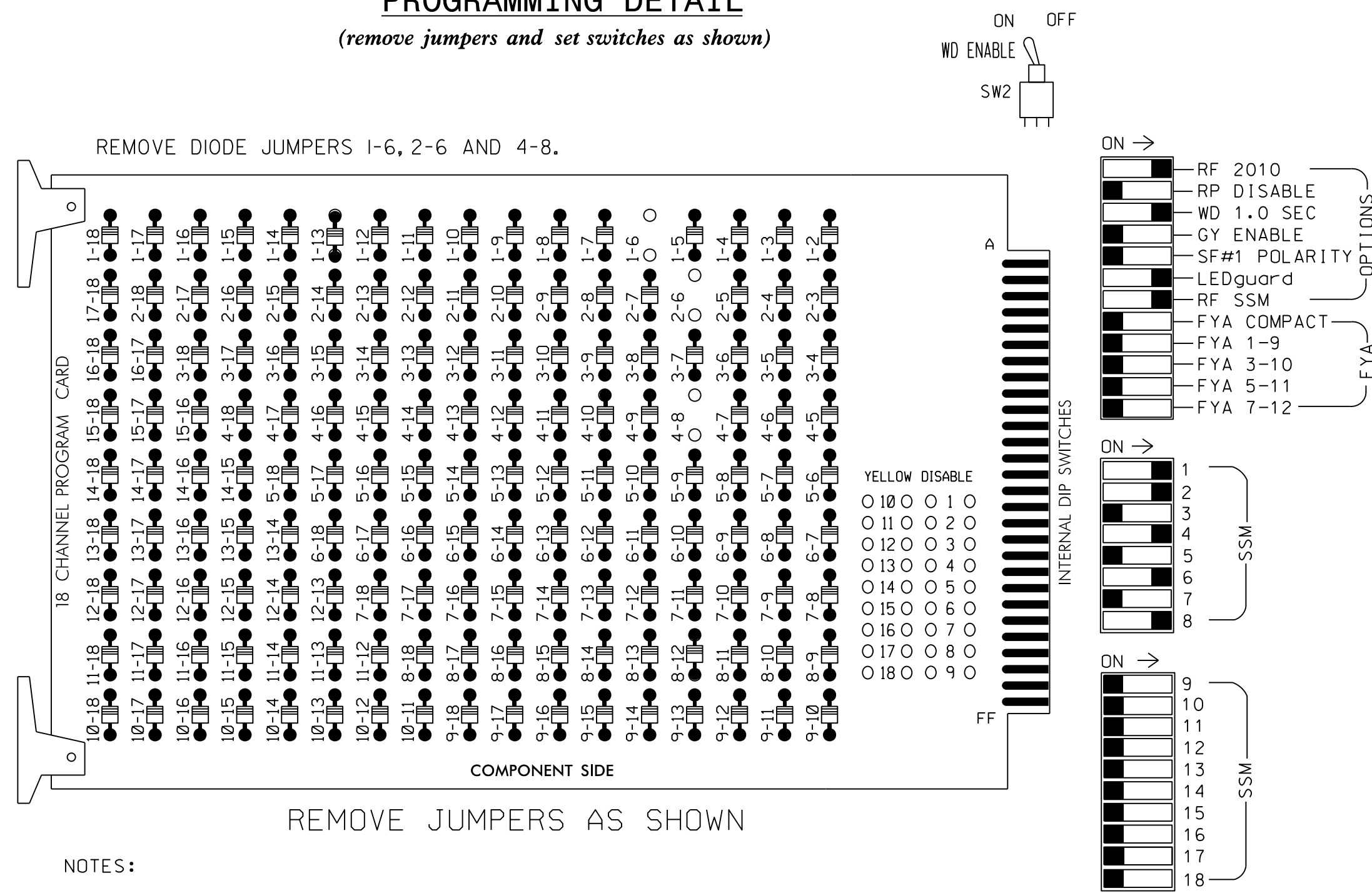


EDI MODEL 2018ECLIP-NC CONFLICT MONITOR PROGRAMMING DETAIL

(remove jumpers and set switches as shown)



NOTES:

- Card is provided with all diode jumpers in place. Removal of any jumper allows its channels to run concurrently.
- Ensure jumpers SEL2-SEL5 and SEL9 are present on the monitor board.
- Ensure that Red Enable is active at all times during normal operation.
- Integrate monitor with Ethernet network in cabinet.

NOTES

- To prevent "flash-conflict" problems, insert red flash program blocks for all unused vehicle load switches in the output file. The installer shall verify that signal heads flash in accordance with the Signal Plans.
- Program phases 4 and 8 for Dual Entry.
- Enable Simultaneous Gap-Out for all phases.
- Program phases 2 and 6 for Start Up In Green.
- Program phases 2 and 6 for Yellow Flash.
- The cabinet and controller are part of the Concord City Signal System.

EQUIPMENT INFORMATION

CONTROLLER.....2070
 CABINET.....332 /W/ AUX
 SOFTWARE.....ECONOLITE OASIS
 CABINET MOUNT.....BASE
 * OUTPUT FILE POSITIONS...18 (12-STD; 6 AUX)
 LOAD SWITCHES USED.....S1,S2,S5,S8,S11
 PHASES USED.....1,2,4,6,8
 OVERLAP "A".....NOT USED
 OVERLAP "B".....NOT USED
 OVERLAP "C".....NOT USED
 OVERLAP "D".....NOT USED

* Auxiliary Output File required for final configuration

SIGNAL HEAD HOOK-UP CHART

LOAD SWITCH NO.	S1	S2	S3	S4	S5	S6	S7	S8	S9	S10	S11	S12	AUX S1	AUX S2	AUX S3	AUX S4	AUX S5	AUX S6
CMU CHANNEL NO.	1	2	13	3	4	14	5	6	15	7	8	16	9	10	17	11	12	18
PHASE	1	2	2 PED	3	4	4 PED	5	6	6 PED	7	8	8 PED	OLA	OLB	SPARE	OLC	OLD	SPARE
SIGNAL HEAD NO.	11	21,22	NU	NU	41,42	NU	NU	61,62	NU	NU	81,82	NU	NU	NU	NU	NU	NU	NU
RED		128			101			134			107							
YELLOW		129			102			135			108							
GREEN		130			103			136			109							
RED ARROW	125																	
YELLOW ARROW	126																	
FLASHING YELLOW ARROW																		
GREEN ARROW	127																	

NU = Not Used

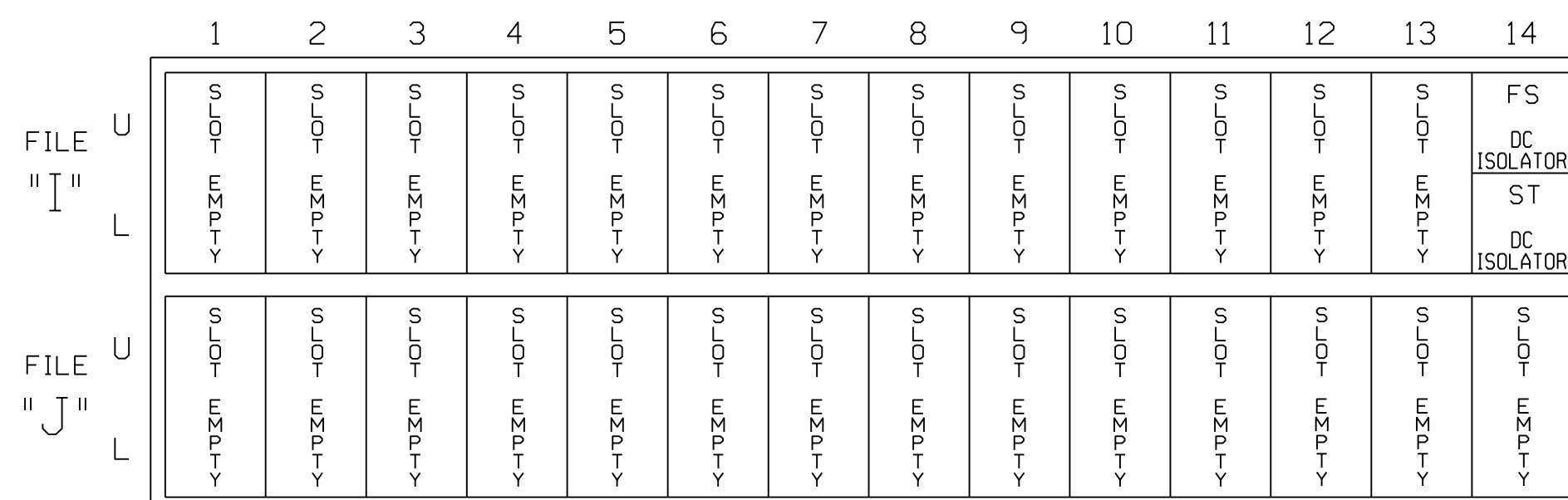
BACKUP PROTECTION NOTE

(program controller as shown below)

From Main Menu press '2' (Phase Control), then '1' (Phase Control Functions). Program phase 6 for 'Backup Protect'. Make sure the Red Revert times shown on the Signal Design Plans are programmed in the 'Phase Timing' menu.

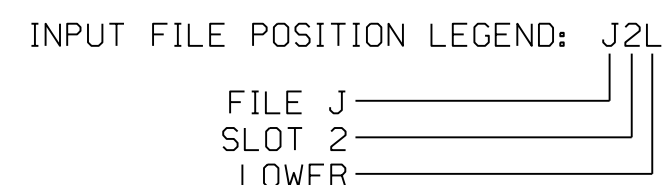
INPUT FILE POSITION LAYOUT

(front view)



EX.: 1A, 2A, ETC. = LOOP NO.'S

FS = FLASH SENSE
 ST = STOP TIME



SPECIAL DETECTOR NOTE

Install a loop emulation detection system for vehicle detection. Perform installation according to manufacturer's directions and NCDOT engineer-approved mounting locations to accomplish the detection schemes shown on the Signal Design Plans.

Signal Upgrade - Temporary Design 2 - TCP Phase 2
 Electrical Detail Sheet 1 of 1

DOCUMENT NOT CONSIDERED FINAL UNLESS ALL SIGNATURES COMPLETED



ELECTRICAL AND PROGRAMMING DETAILS FOR:		SR 1445 (Derita Road) at Thunder Road / PNG Driveway	
Division 10	Cabarrus County	Concord	
PLAN DATE: March 2016	REVIEWED BY: J O Deaton		
PREPARED BY: M W Yalch	REVIEWED BY:		
REVISIONS	INIT.	DATE	
Prepared for the Offices of:			
750 N. Greenfield Pkwy, Garner, NC 27529		DocuSigned by: James O. Deaton #FFBAC308D6F... 7/11/2016	
		SIG. INVENTORY NO. 10-2010T2	

THIS ELECTRICAL DETAIL IS FOR THE SIGNAL DESIGN: 10-2010T2
 DESIGNED: March 2016
 SEALED: July 7, 2016
 REVISED: