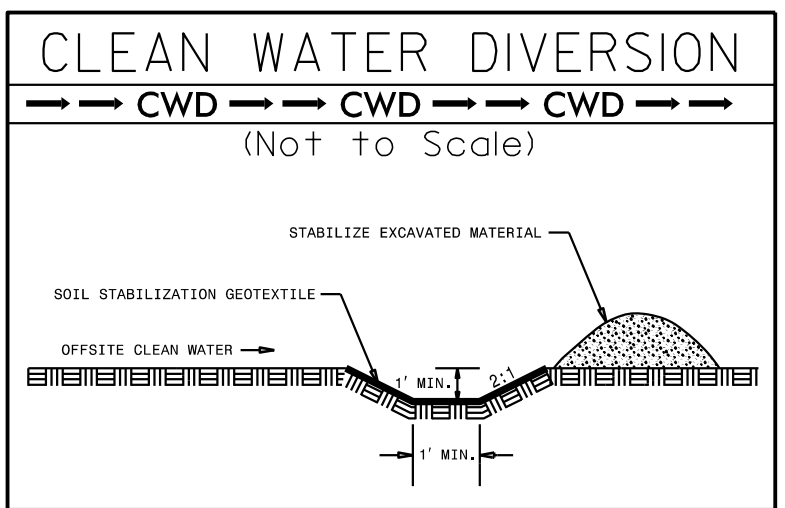
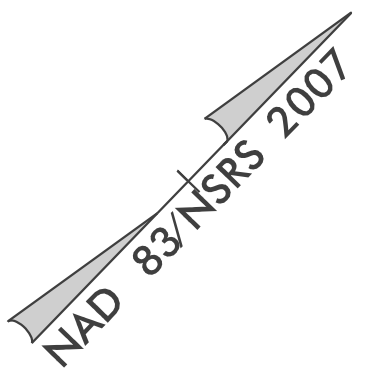


PROJECT REFERENCE NO. U-4910A	SHEET NO. EC-10/CONST.06
RW SHEET NO.	
ROADWAY DESIGN ENGINEER	HYDRAULICS ENGINEER

NOTES: ANY DEVIATION FROM OPTIONS GIVEN WILL REQUIRE PRIOR APPROVAL BY ENGINEER.

ADDITIONAL EROSION CONTROL DEVICES MAY NEED TO BE INSTALLED AS DIRECTED BY THE ENGINEER.

FINAL GRADE EROSION CONTROL FOR CONSTRUCTION SHEET 06



Place Matting for Erosion Control on Slope as Work Allows. Sta. 141+00 to Sta. 146+00 -L- LT

INSTALL MATTING FOR EROSION CONTROL IN THE PROPOSED DITCH LINE

Place Matting for Erosion Control on Slope as Work Allows. Sta. 12+75 -Y3- RT to Sta. 146+00 -L- RT

Place Matting for Erosion Control on Slope as Work Allows. Sta. 133+00 -L- RT to Sta. 12+75 -Y3- LT

CL 'B' RIP RAP TOE PROTECTION EST 255 TONS EST 655 SY GF SEE DETAIL #6, SHEET 2D-1

LAT 4' BASE DITCH W/CL 1' RIP RAP EST 240 TONS EST 702 SY GF EST 390 CY DDE SEE DETAIL #3, SHEET 2D-1

★ WOODS PROPOSED SIGNAL
FOR -L- PROFILE SEE SHEET 9
FOR -Y3- PROFILE SEE SHEET 10

