

NOTES: ANY DEVIATION FROM OPTIONS GIVEN WILL REQUIRE PRIOR APPROVAL BY ENGINEER.

ADDITIONAL EROSION CONTROL DEVICES MAY NEED TO BE INSTALLED AS DIRECTED BY THE ENGINEER.

FINAL GRADE EROSION CONTROL FOR CONSTRUCTION SHEET 05

Place Matting for Erosion Control on Slope as Work Allows. Sta. 124+50 to Sta. 126+00 -L- LT

Place Matting for Erosion Control on Slope as Work Allows. Sta. 118+50 to Sta. 124+00 -L- LT

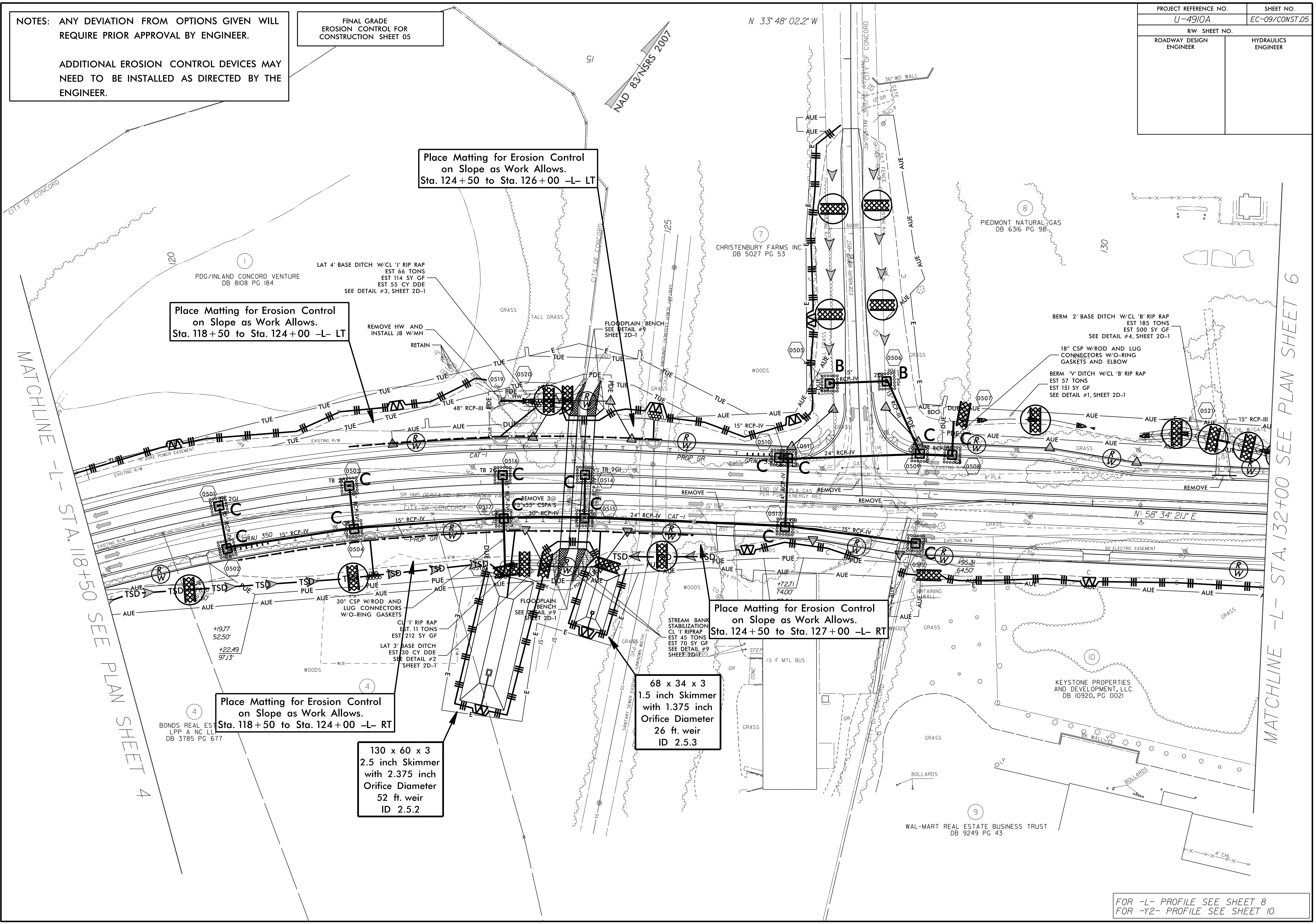
Place Matting for Erosion Control on Slope as Work Allows. Sta. 124+50 to Sta. 127+00 -L- RT

Place Matting for Erosion Control on Slope as Work Allows. Sta. 118+50 to Sta. 124+00 -L- RT

130 x 60 x 3  
2.5 inch Skimmer  
with 2.375 inch  
Orifice Diameter  
52 ft. weir  
ID 2.5.2

68 x 34 x 3  
1.5 inch Skimmer  
with 1.375 inch  
Orifice Diameter  
26 ft. weir  
ID 2.5.3

PROJECT REFERENCE NO.	SHEET NO.
U-4910A	EC-09/CONST.05
RW SHEET NO.	
ROADWAY DESIGN ENGINEER	HYDRAULICS ENGINEER



MATCHLINE -L- STA. 118+50 SEE PLAN SHEET 4

MATCHLINE -L- STA. 132+00 SEE PLAN SHEET 6

FOR -L- PROFILE SEE SHEET 8  
FOR -Y2- PROFILE SEE SHEET 10