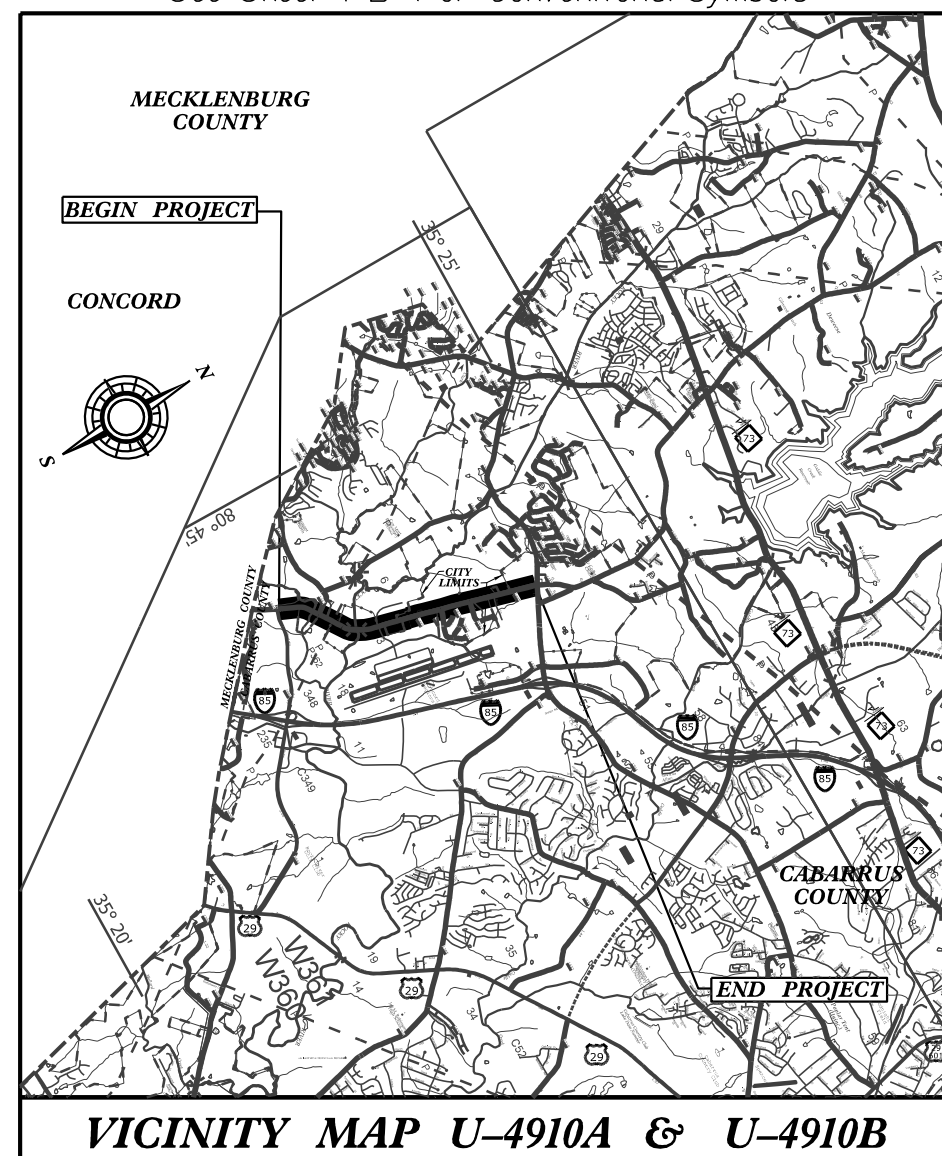


**TIP PROJECT: U-4910A / U-4910B**

See Sheet 1-A For Index of Sheets  
See Sheet 1-B For Conventional Symbols



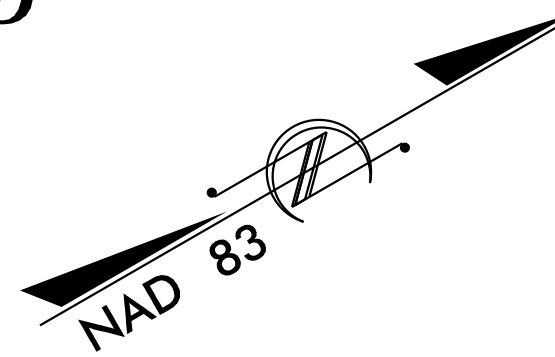
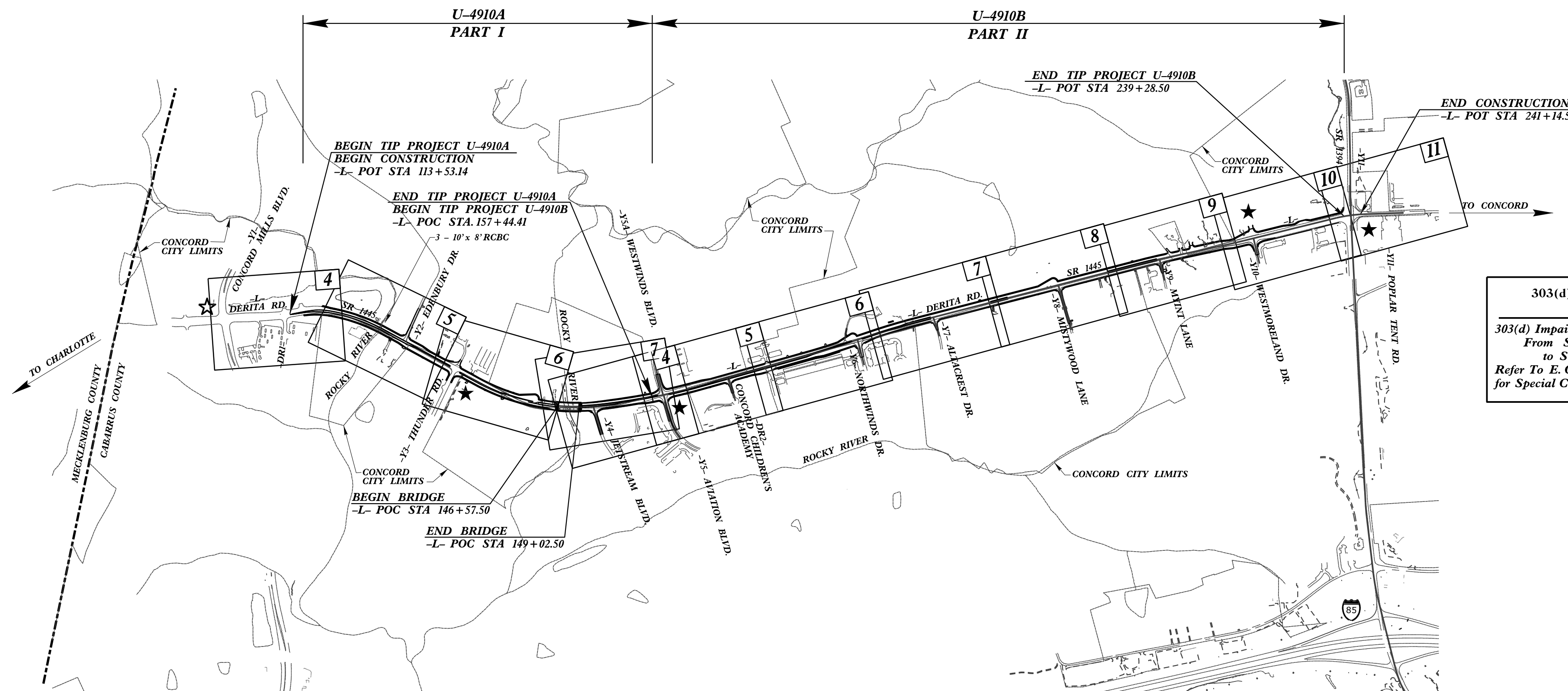
# STATE OF NORTH CAROLINA DIVISION OF HIGHWAYS

## PLAN FOR PROPOSED HIGHWAY EROSION CONTROL

### CABARRUS COUNTY

**LOCATION: SR-1445(DERITA ROAD) FROM NORTH OF SR 2894, CONCORD MILLS BOULEVARD, TO SR 1394 POPLAR TENT ROAD.**

**TYPE OF WORK: GRADING, PAVING, DRAINAGE, STRUCTURE, SIGNALS & SIGNING**



STATE	STATE PROJECT REFERENCE NO.	SHEET NO.	TOTAL SHEETS
N.C.	U-4910A / U-4910B	EC-1	
STATE PROJ. NO.	F.A. PROJ. NO.	DESCRIPTION	
40373.1.1		U-4910A (PE)	
40373.1.F3	HPP-1445(7)	U-4910B (PE)	
40373.2.D1		U-4910A (R/W & UTIL)	
40373.2.F2	HPP-1445(7)	U-4910B (R/W & UTIL)	
40373.3.3	STPDA-1445(008)	U-4910A CONST U-4910B CONST	

#### EROSION AND SEDIMENT CONTROL MEASURES

Std. #	Description	Symbol
1630.05	Temporary Silt Ditch	
1630.05	Temporary Diversion	
1605.01	Temporary Silt Fence	
1606.01	Special Sediment Control Fence	
1622.01	Temporary Berms and Slope Drains	
1630.02	Silt Basin Type B	
1633.01	Temporary Rock Silt Check Type-A	
	Temporary Rock Silt Check Type-A with Matting and Polyacrylamide (PAM)	
1633.02	Temporary Rock Silt Check Type-B	
	Wattle/Coir Fiber Wattle	
	Wattle/Coir Fiber Wattle with Polyacrylamide (PAM)	
1634.01	Temporary Rock Sediment Dam Type-A	
1634.02	Temporary Rock Sediment Dam Type-B	
1635.01	Rock Pipe Inlet Sediment Trap Type-A	
1635.02	Rock Pipe Inlet Sediment Trap Type-B	
1630.04	Stilling Basin	
1630.06	Special Stilling Basin	
	Rock Inlet Sediment Trap:	
1632.01	Type A	
1632.02	Type B	
1632.03	Type C	
	Skimmer Basin	
	Tiered Skimmer Basin	
	Infiltration Basin	

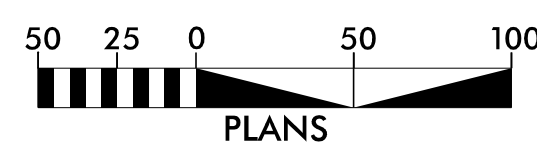
303(d) IMPAIRED WATER(S) EXIST ON THIS PROJECT  
303(d) Impaired Water Zone(s) Exist From Sta. \_\_\_\_\_ Begin to Sta. \_\_\_\_\_ End  
Refer To E. C. Special Provisions for Special Considerations.

**THIS PROJECT CONTAINS EROSION CONTROL PLANS FOR CLEARING AND GRUBBING PHASE OF CONSTRUCTION.**

**THIS PROJECT HAS BEEN DESIGNED TO SENSITIVE WATERSHED STANDARDS.**

**ENVIRONMENTALLY SENSITIVE AREA(S) EXIST ON THIS PROJECT**  
Refer To E. C. Special Provisions for Special Considerations.

#### GRAPHIC SCALE



THESE EROSION AND SEDIMENT CONTROL PLANS COMPLY WITH THE REGULATIONS SET FORTH BY THE NCG-010000 GENERAL CONSTRUCTION PERMIT EFFECTIVE AUGUST 3, 2011 AND ISSUED BY THE NORTH CAROLINA DEPARTMENT OF ENVIRONMENT AND NATURAL RESOURCES DIVISION OF WATER RESOURCES.

Prepared in the Office of:



Designed by:

**Brian Elam, PE**  
NAME

**3195**  
LEVEL III CERTIFICATION NO.

Reviewed in the Office of:

#### ROADSIDE ENVIRONMENTAL UNIT

1 South Wilmington St.  
Raleigh, NC 27611

#### 2012 STANDARD SPECIFICATIONS

Reviewed by:

**Natalie Chan, PE, CPESC, CPSWQ**

#### Roadway Standard Drawings

The following roadway english standards as appear in "Roadway Standard Drawings"- Roadway Design Unit - N. C. Department of Transportation - Raleigh, N. C., dated January 2012 and the latest revision thereto are applicable to this project and by reference hereby are considered a part of these plans.

1604.01 Railroad Erosion Control Detail	1632.01 Rock Inlet Sediment Trap Type A
1605.01 Temporary Silt Fence	1632.02 Rock Inlet Sediment Trap Type B
1606.01 Special Sediment Control Fence	1632.03 Rock Inlet Sediment Trap Type C
1607.01 Gravel Construction Entrance	1633.01 Temporary Rock Silt Check Type A
1622.01 Temporary Berms and Slope Drains	1633.02 Temporary Rock Silt Check Type B
1630.01 Riser Basin	1634.01 Temporary Rock Sediment Dam Type A
1630.02 Silt Basin Type B	1634.02 Temporary Rock Sediment Dam Type B
1630.03 Temporary Silt Ditch	1635.01 Rock Pipe Inlet Sediment Trap Type A
1630.04 Stilling Basin	1635.02 Rock Pipe Inlet Sediment Trap Type B
1630.05 Temporary Diversion	1640.01 Coir Fiber Baffle
1630.06 Special Stilling Basin	1645.01 Temporary Stream Crossing
1631.01 Matting Installation	