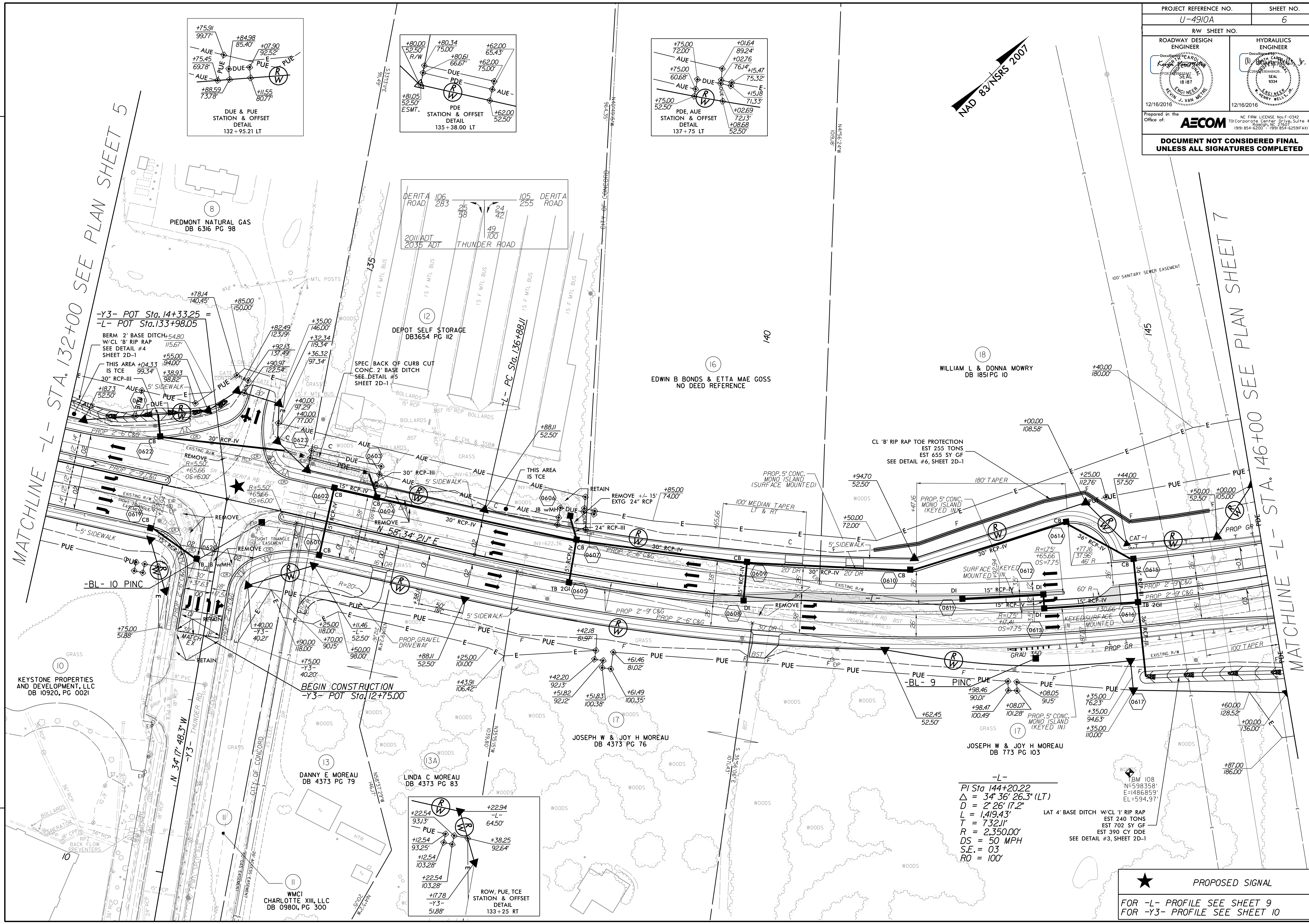
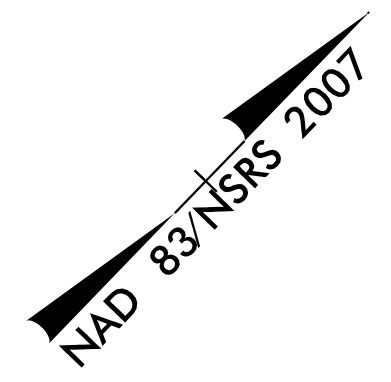
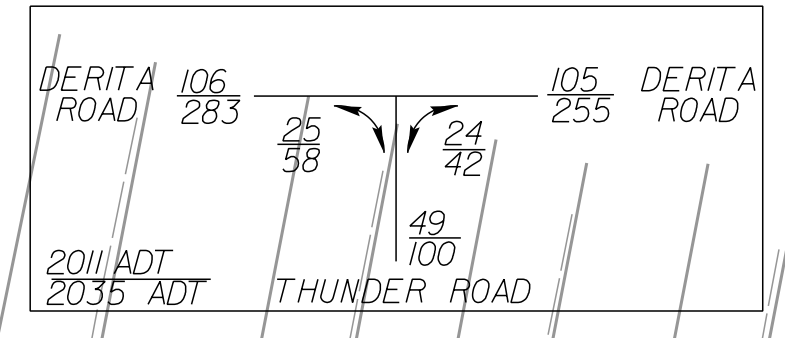
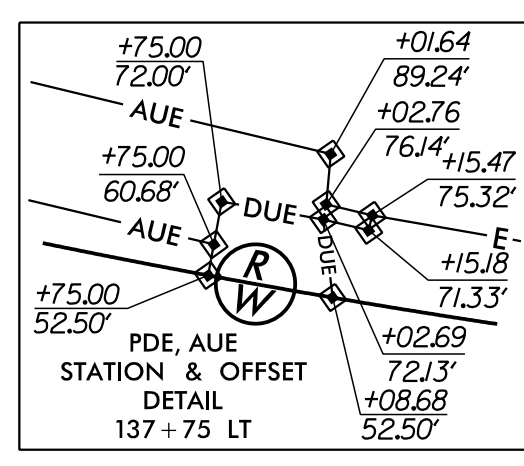
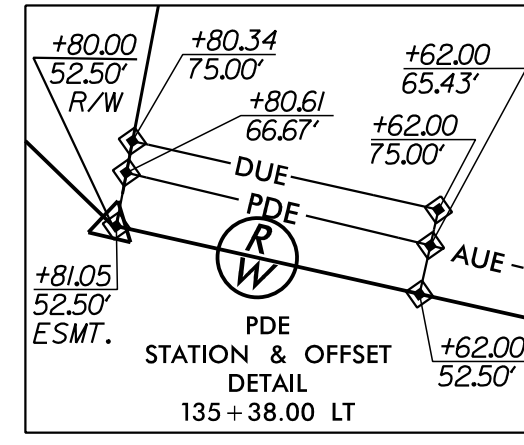
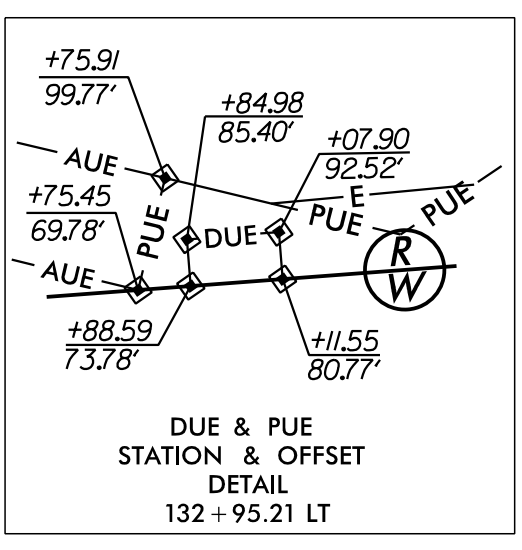


PROJECT REFERENCE NO. U-4910A		SHEET NO. 6	
RW SHEET NO.			
ROADWAY DESIGN ENGINEER <i>[Signature]</i>		HYDRAULICS ENGINEER <i>[Signature]</i>	
12/16/2016		12/16/2016	
Prepared in the Office of:		NC FIRM LICENSE No. F-0342 701 Corporate Center Drive, Suite 475 Rosedale, NC 27087 (919) 854-6200 • (919) 854-6259(FAX)	
AECOM			
DOCUMENT NOT CONSIDERED FINAL UNLESS ALL SIGNATURES COMPLETED			



MATCHLINE -L- STA. 132+00 SEE PLAN SHEET 5

MATCHLINE -L- STA. 146+00 SEE PLAN SHEET 7



-Y3- POT Sta. 14+33.25 =
-L- POT Sta. 133+98.05

BERM 2' BASE DITCH W/CL 'B' RIP RAP SEE DETAIL #4 SHEET 2D-1
THIS AREA IS TCE
30" RCP-III
5' SIDEWALK
PUE

DEPOT SELF STORAGE DB3654 PG 112
SPEC BACK OF CURB CUT CONC. 2' BASE DITCH SEE DETAIL #5 SHEET 2D-1

EDWIN B BONDS & ETTA MAE GOSS NO DEED REFERENCE

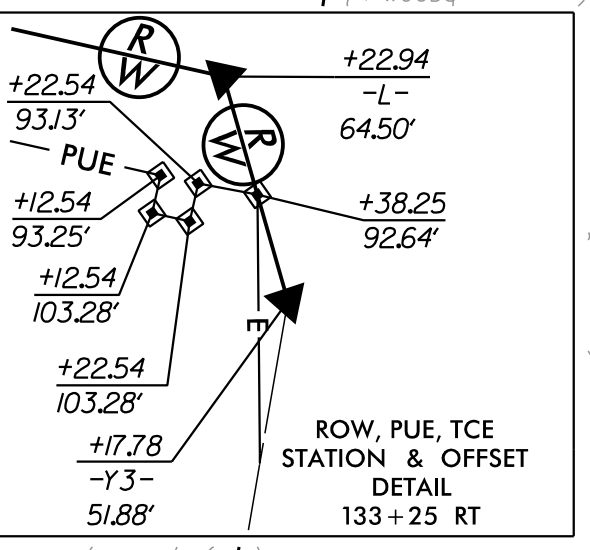
WILLIAM L & DONNA MOWRY DB 1851 PG 10

KEYSTONE PROPERTIES AND DEVELOPMENT, LLC DB 10920, PG 0021

BEGIN CONSTRUCTION -Y3- POT Sta. 12+75.00

JOSEPH W & JOY H MOREAU DB 4373 PG 76

JOSEPH W & JOY H MOREAU DB 773 PG 103



-L-
PI Sta 144+20.22
Δ = 34' 36" 26.3" (LT)
L = 2' 26" 17.2"
T = 732.11'
R = 2,350.00'
DS = 50 MPH
S.E. = 03
RO = 100'

LAT 4' BASE DITCH W/CL 'B' RIP RAP EST 240 TONS EST 702 SY GF EST 390 CY DDE SEE DETAIL #3, SHEET 2D-1

★ PROPOSED SIGNAL
FOR -L- PROFILE SEE SHEET 9
FOR -Y3- PROFILE SEE SHEET 10

REVISIONS

Revisions:

Drawn: RY Roadway Pro, URBOL, RA, JACOB G. Gagn
User: schmid
Date: 12/15/2016
Time: 4:25:37 PM