

**NOTES**

FOR BRIDGE APPROACH FILL INCLUDING GEOTEXTILE, 4" Ø DRAINAGE PIPE, #78M STONE, SEE ROADWAY PLANS.

GEOTEXTILE SHALL BE TYPE 1 IN ACCORDANCE WITH THE STANDARD SPECIFICATIONS SECTION 1056.

#78M STONE BACKFILL (CLASS V SELECT MATERIAL) SHALL BE IN ACCORDANCE WITH STANDARD SPECIFICATIONS SECTION 1016.

#78M STONE BACKFILL IS TO BE CONTINUOUS ALONG FILL FACE OF BACKWALL FROM OUTSIDE EDGE TO OUTSIDE EDGE OF APPROACH SLAB.

FOR THE 4" Ø DRAINAGE PIPE OUTLET(S), SEE ROADWAY STANDARD DRAWINGS.

APPROACH SLAB GROOVING IS NOT REQUIRED.

PAYMENT FOR T101 RAIL ON THE APPROACH SLABS SHALL BE INCLUDED IN THE PRICE BID FOR "T101 RAIL".

THE COST OF THE T101 ANCHOR ASSEMBLY CAST IN THE APPROACH SLAB SHALL BE INCLUDED IN THE PRICE BID FOR T101 RAIL.

FOR T101 RAIL, SEE "SUPERSTRUCTURE RAIL DETAILS (T101 RAIL)".

DO NOT BEGIN BRIDGE DECK GRINDING UNTIL APPROACH SLABS ARE FULLY CURED IN ACCORDANCE WITH THE STANDARD SPECIFICATIONS. FOR GRINDING APPROACH SLABS, SEE SPECIAL PROVISIONS FOR "BRIDGE DECK GRINDING".

**BILL OF MATERIAL**

**APPROACH SLAB AT EB No. 1**

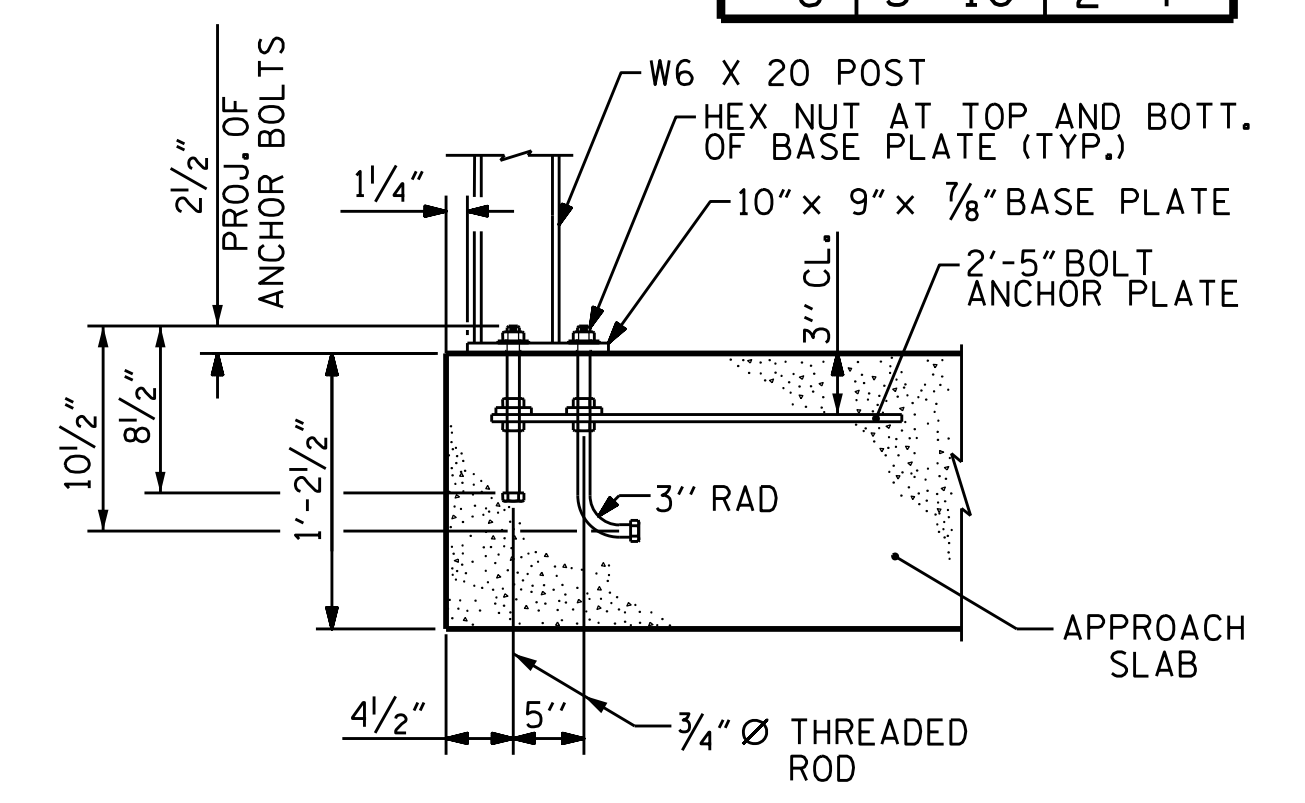
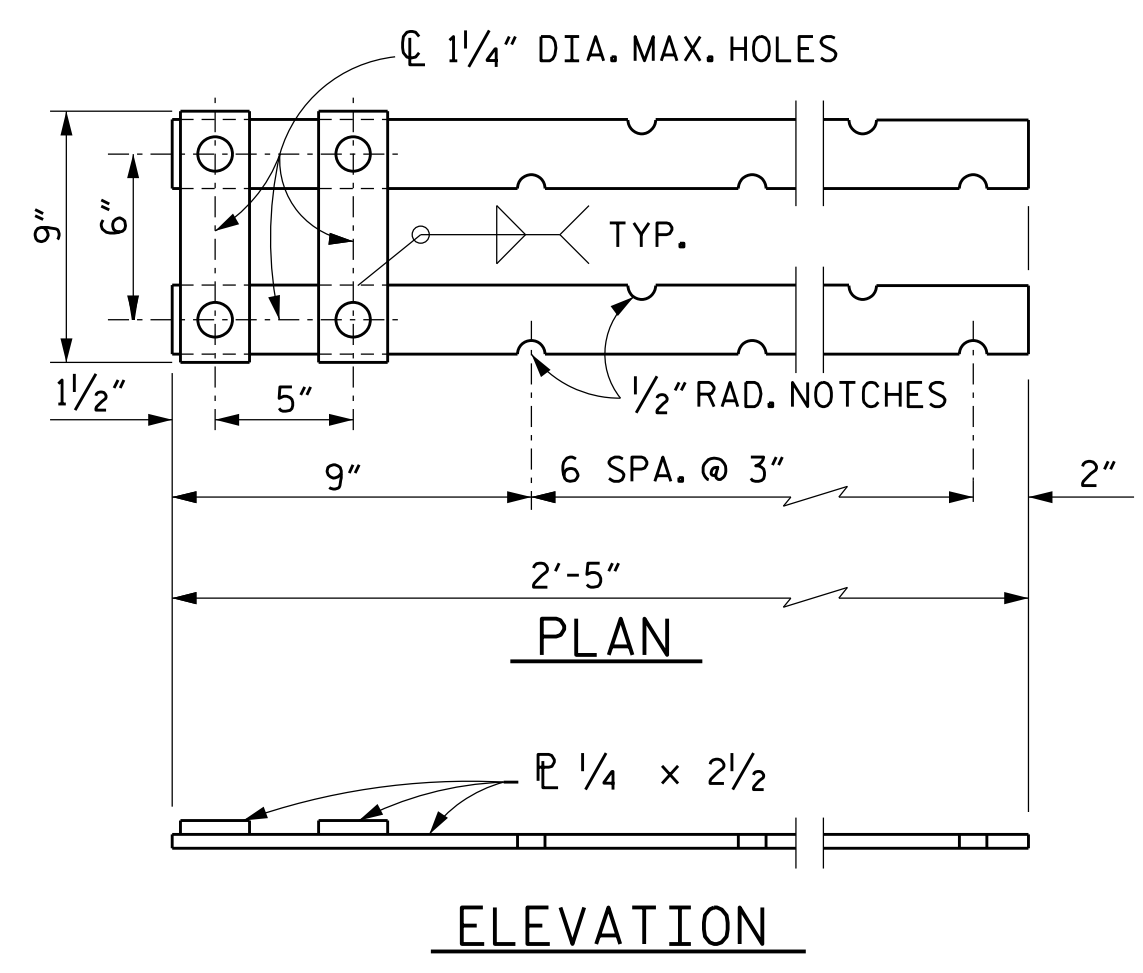
BAR	NO.	SIZE	TYPE	LENGTH	WEIGHT
*A1	28	#4	STR	26'-8"	499
A2	28	#4	STR	26'-8"	499
*B1	54	#5	STR	24'-3"	1366
B2	54	#6	STR	24'-8"	2001
REINFORCING STEEL				LBS.	2500
* EPOXY COATED REINFORCING STEEL				LBS.	1865
CLASS AA CONCRETE				C. Y.	32.8

**APPROACH SLAB AT EB No. 2**

BAR	NO.	SIZE	TYPE	LENGTH	WEIGHT
*A1	26	#4	STR	26'-8"	463
A2	26	#4	STR	26'-8"	463
*B1	54	#5	STR	24'-3"	1366
B2	54	#6	STR	24'-8"	2001
REINFORCING STEEL				LBS.	2500
* EPOXY COATED REINFORCING STEEL				LBS.	1865
CLASS AA CONCRETE				C. Y.	32.8

**SPLICE LENGTHS**

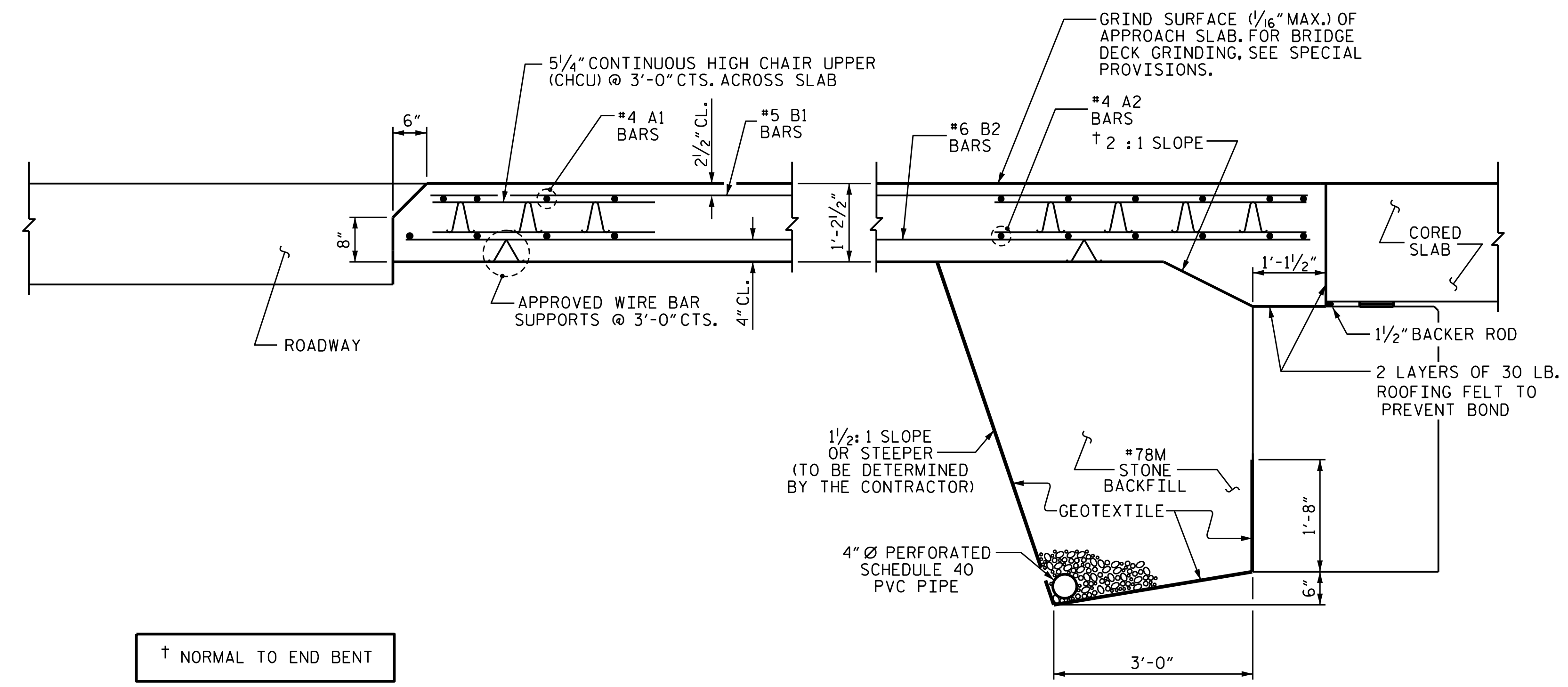
BAR SIZE	EPOXY COATED	UNCOATED
#4	2'-0"	1'-9"
#5	2'-6"	2'-2"
#6	3'-10"	2'-7"



**BOLT ANCHOR PLATES**

**T101 ANCHOR ASSEMBLY DETAILS**

FOR POST AND BASE PLATE SEE "SUPERSTRUCTURE RAIL DETAILS (T101 RAIL)".



PROJECT NO. B-5383  
 AVERY COUNTY  
 STATION: 12+71.00 -L

SHEET 1 OF 2

STATE OF NORTH CAROLINA  
 DEPARTMENT OF TRANSPORTATION  
 RALEIGH

BRIDGE APPROACH SLAB FOR PRESTRESSED CONCRETE CORED SLAB UNIT (SUB-REGIONAL TIER)

Professional Engineer Seal: MARSHALL G. CHEEK, JR., SEAL 20125, ENGINEER, NORTH CAROLINA. 12/22/2016

ASSEMBLED BY : W.J. HARRIS DATE : 10/16  
 CHECKED BY : M.G. CHEEK DATE : 11/9/16

DOCUMENT NOT CONSIDERED FINAL UNLESS ALL SIGNATURES COMPLETED

REVISIONS

NO.	BY:	DATE:	NO.	BY:	DATE:
1			3		
2			4		

SHEET NO. S-15  
 TOTAL SHEETS 16