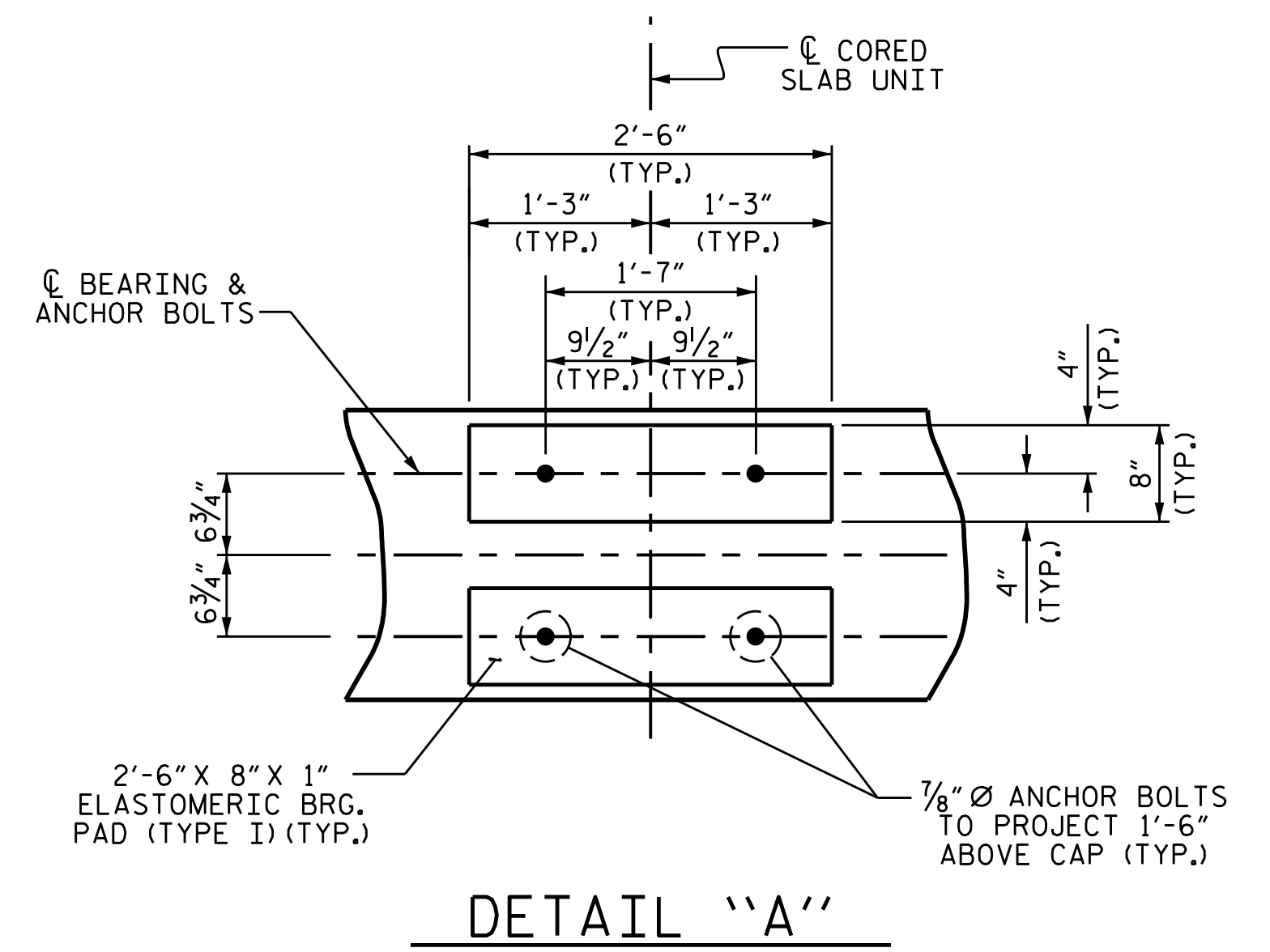
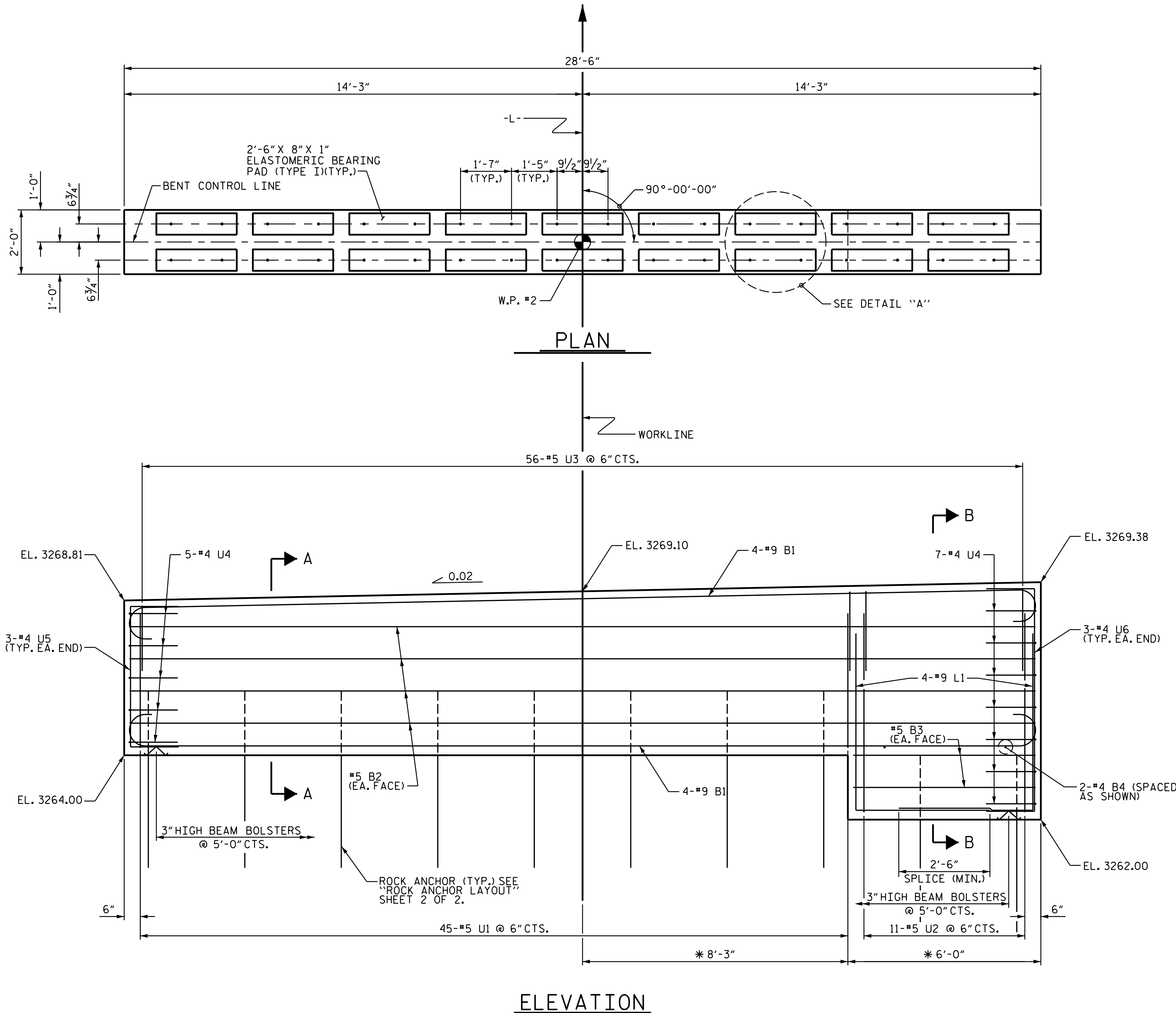


NOTES

STIRRUPS IN CAP MAY BE SHIFTED AS NECESSARY TO CLEAR ANCHOR BOLTS AND ROCK ANCHORS.
 FOR UNTENSIONED ROCK ANCHORS, SEE GEOTECHNICAL SPECIAL PROVISIONS.
 THE COST OF THE 7/8" ANCHOR BOLTS, NUTS, WASHERS, AND PLATES CAST WITH THE BENT CAP SHALL BE INCLUDED IN THE VARIOUS PAY ITEMS.
 THE COST OF THE NUTS, WASHERS, AND PLATES USED WITH THE ROCK ANCHORS SHALL BE INCLUDED IN THE UNIT PRICE BID FOR 2" Ø ANCHOR HOLE NOT IN SOIL.
 THE BOTTOM OF THE CAP ELEVATIONS SHOWN ARE APPROXIMATE. THE BOTTOM OF THE CAP SHALL BE FORMED DIRECTLY ON THE ROCK OUTCROPPING. THE BOTTOM LAYER OF REINFORCING STEEL SHALL BE A MINIMUM OF 3" CL. FROM THE BOTTOM OF THE CAP.
 * THE DIMENSIONS SHOWN ARE BASED ON THE BEST INFORMATION AVAILABLE. THESE DIMENSIONS SHALL BE ADJUSTED AS NECESSARY TO FORM THE CAP DIRECTLY ON AND AGAINST THE ROCK OUTCROPPING.



PROJECT NO. B-5383
AVERY COUNTY
 STATION: 12+71.00 -L-

SHEET 1 OF 2



STATE OF NORTH CAROLINA
 DEPARTMENT OF TRANSPORTATION
 RALEIGH
 SUBSTRUCTURE
 BENT No. 1

DRAWN BY: W.J. HARRIS DATE: 11/16
 CHECKED BY: M.G. CHEEK DATE: 11/16
 DESIGN ENGINEER OF RECORD: W.J. HARRIS DATE: 11/16

REVISIONS						SHEET NO.
NO.	BY:	DATE:	NO.	BY:	DATE:	S-13
1			3			TOTAL SHEETS
2			4			16

DOCUMENT NOT CONSIDERED FINAL UNLESS ALL SIGNATURES COMPLETED

12/22/2016