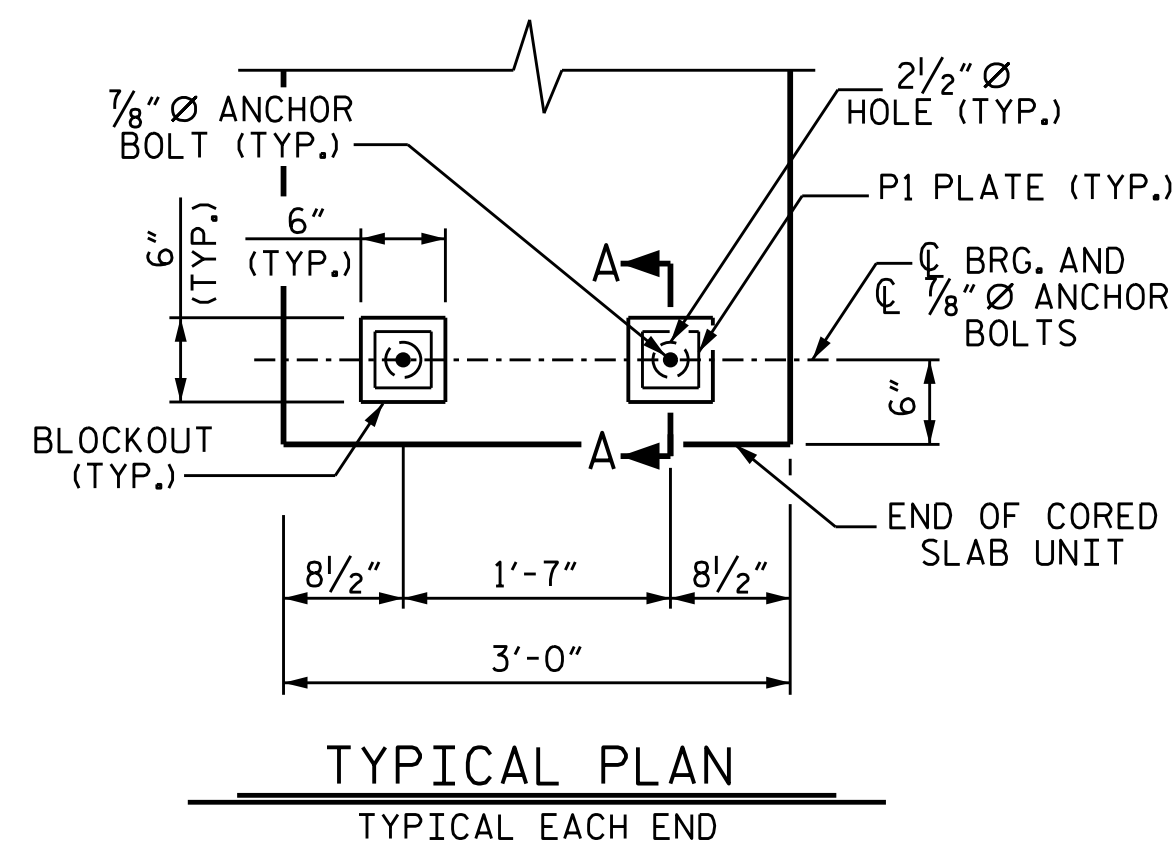


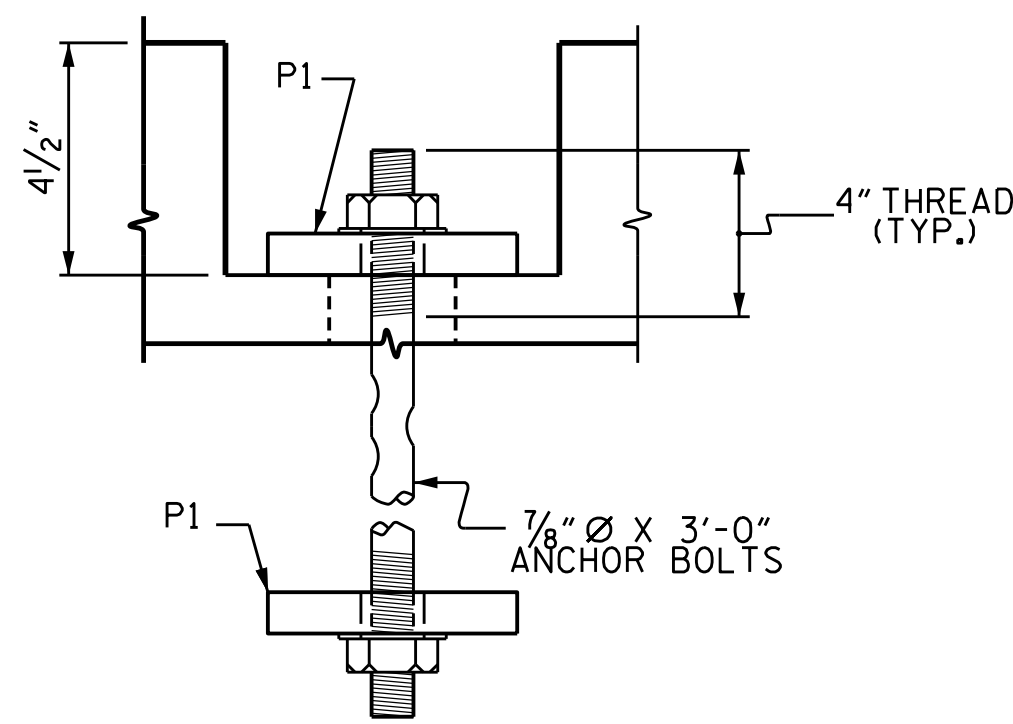
FIXED END  
(TYPE I - 36 REQ'D)

**ELASTOMERIC BEARING DETAILS**

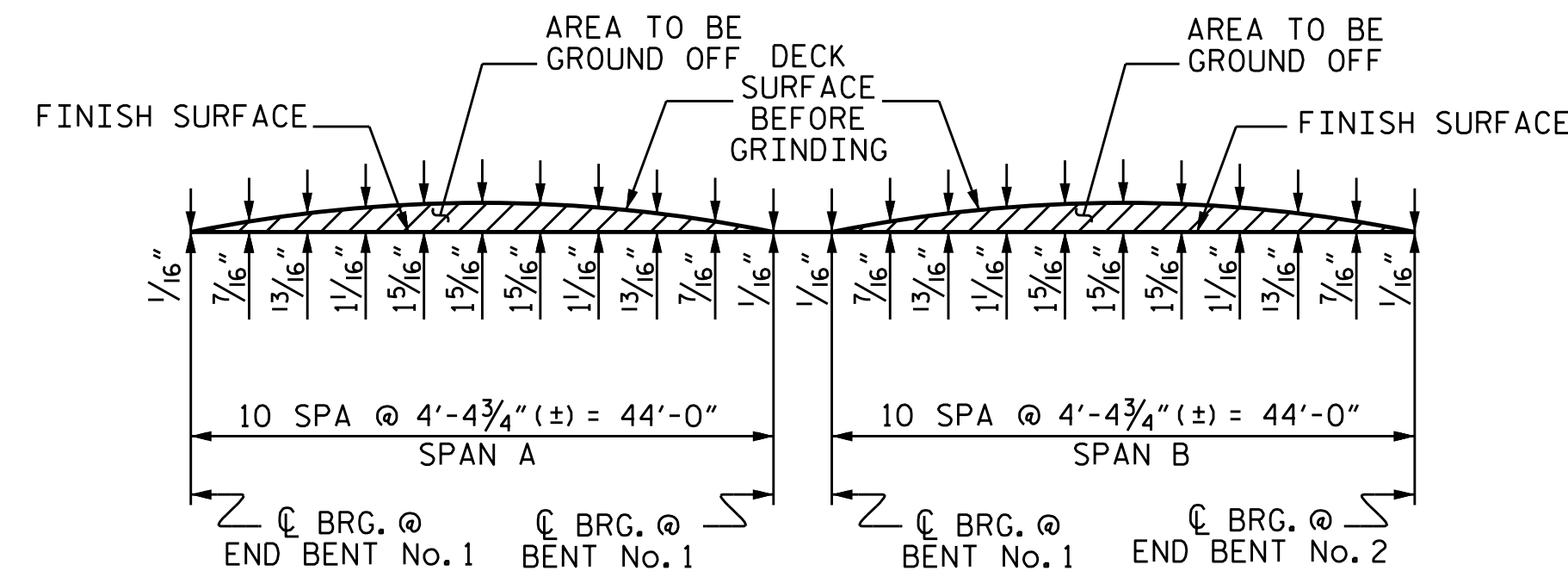
ELASTOMER IN ALL BEARINGS SHALL BE 50 DUROMETER HARDNESS.



TYPICAL PLAN  
TYPICAL EACH END



SECTION A-A



**SCHEMATIC OF GRINDING ON THE SURFACE OF CORED SLAB UNIT**

VALUES FOR GRINDING ARE BASED ON THE ADJUSTED FINAL CAMBER AND ARE CONSTANT IN THE TRANSVERSE DIRECTION BETWEEN GUTTERLINES.

CORED SLABS REQUIRED			
45' UNIT	NUMBER	LENGTH	TOTAL LENGTH
EXTERIOR C.S.	4	45'-0"	180
INTERIOR C.S.	14	45'-0"	630
TOTAL	18		810

CONCRETE RELEASE STRENGTH	
UNIT	PSI
45' UNITS	4500

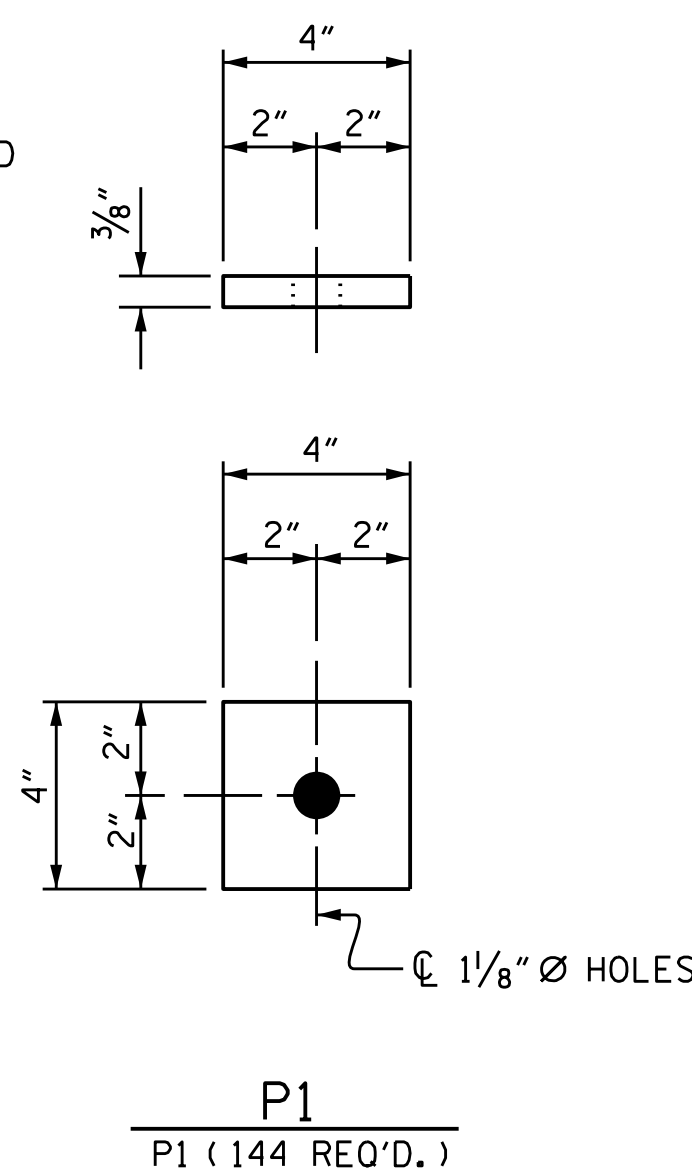
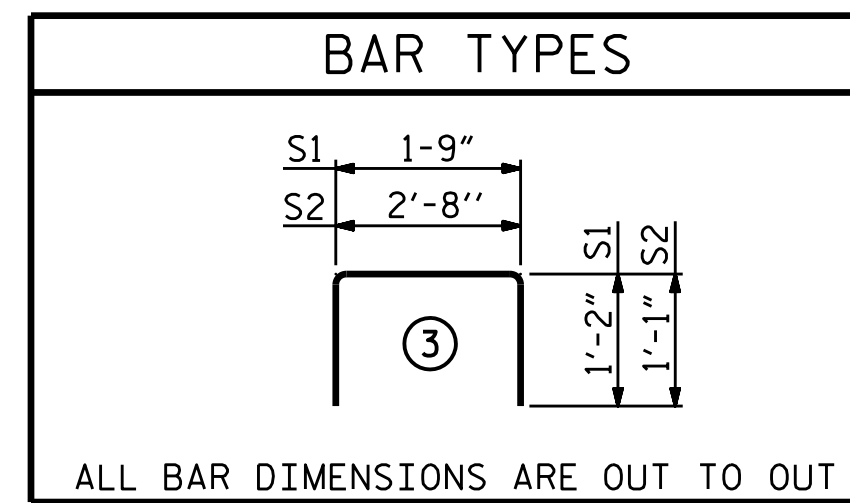


PLATE DETAILS  
P1 (144 REQ'D.)



**BILL OF MATERIAL FOR ONE 45' CORED SLAB UNIT**

BAR	NUMBER	SIZE	TYPE	EXTERIOR UNIT		INTERIOR UNIT	
				LENGTH	WEIGHT	LENGTH	WEIGHT
B1	4	#4	STR	23'-3"	62	23'-3"	62
S1	8	#5	3	4'-1"	34	4'-1"	34
S2	108	#4	3	4'-10"	333	4'-10"	333
REINFORCING STEEL				LBS.	429		429
6000 P.S.I. CONCRETE				CU. YDS.	5.9		5.9
0.6" Ø L.R. STRANDS				No.	15		15

**DEAD LOAD DEFLECTION AND CAMBER**

45' CORED SLAB UNIT	0.6" Ø L.R. STRAND
CAMBER (SLAB ALONE IN PLACE)	1/4" ↑
DEFLECTION DUE TO SUPERIMPOSED DEAD LOAD	3/16" ↓
FINAL CAMBER	1/8" ↑

**NOTES**

ALL PRESTRESSING STRANDS SHALL BE 7-WIRE LOW RELAXATION GRADE 270 STRANDS AND SHALL CONFORM TO AASHTO M203 EXCEPT FOR SAMPLING REQUIREMENTS WHICH SHALL BE IN ACCORDANCE WITH THE STANDARD SPECIFICATIONS.

ALL REINFORCING STEEL CAST WITH THE CORED SLAB SECTIONS SHALL BE GRADE 60 AND SHALL BE INCLUDED IN THE UNIT PRICE BID FOR PRESTRESSED CONCRETE CORED SLABS.

RECESSES FOR TRANSVERSE STRANDS SHALL BE GROUTED AFTER THE TENSIONING OF THE STRANDS.

THE BACKER RODS SHALL CONFORM TO THE REQUIREMENTS OF TYPE M BOND BREAKER. SEE SECTION 1028 OF THE STANDARD SPECIFICATIONS.

WHEN CORED SLABS ARE CAST, AN INTERNAL HOLD-DOWN SYSTEM SHALL BE EMPLOYED TO PREVENT VOIDS FROM RISING OR MOVING SIDEWAYS. AT LEAST SIX WEEKS PRIOR TO CASTING CORED SLABS, THE CONTRACTOR SHALL SUBMIT TO THE ENGINEER FOR REVIEW AND COMMENT, DETAILED DRAWINGS OF THE PROPOSED HOLD-DOWN SYSTEM. IN ADDITION TO STRUCTURAL DETAILS, LOCATION AND SPACING OF THE HOLD-DOWNS SHALL BE INDICATED.

PRESTRESSING STRANDS SHALL BE CUT FLUSH WITH THE CORED SLAB UNIT ENDS.

APPLY EPOXY PROTECTIVE COATING TO CORED SLAB UNIT ENDS.

FLAME CUTTING OF THE TRANSVERSE POST-TENSIONING STRAND IS NOT ALLOWED.

THE TRANSFER OF LOAD FROM THE ANCHORAGES TO THE CORED SLAB UNIT SHALL BE DONE WHEN THE CONCRETE HAS REACHED A COMPRESSIVE STRENGTH OF NOT LESS THAN THE REQUIRED STRENGTH SHOWN IN THE "CONCRETE RELEASE STRENGTH" TABLE.

FOR GROUT FOR STRUCTURES, SEE SPECIAL PROVISIONS.

THE PERMITTED THREADED INSERTS ARE DETAILED AS AN OPTION FOR THE CONTRACTOR TO ATTACH FALSEWORK AND FORMWORK DURING CONSTRUCTION.

THE PERMITTED THREADED INSERTS IN THE EXTERIOR UNITS SHALL BE SIZED BY THE CONTRACTOR, SPACED AT 4'-0" CENTERS AND GALVANIZED IN ACCORDANCE WITH SECTION 1076 OF THE STANDARD SPECIFICATIONS. STAINLESS STEEL THREADED INSERTS MAY BE USED AS AN ALTERNATE.

THE PERMITTED THREADED INSERTS SHALL BE GROUTED BY THE CONTRACTOR IMMEDIATELY FOLLOWING REMOVAL OF THE FALSEWORK.

THE COST OF THE PERMITTED THREADED INSERTS SHALL BE INCLUDED IN THE PRICE BID FOR THE PRECAST UNITS.

THE COST OF THE T101 RAIL ANCHOR ASSEMBLIES CAST WITH THE TYPE I CORED SLABS SHALL BE INCLUDED IN THE PRICE BID FOR THE PRECAST UNITS.

PROJECT NO. B-5383

AVERY COUNTY

STATION: 12+71.00 -L-

SHEET 4 OF 5

STATE OF NORTH CAROLINA  
DEPARTMENT OF TRANSPORTATION  
RALEIGH

3'-0" X 1'-7 1/2"  
PRESTRESSED CONCRETE  
CORED SLAB UNIT  
90° SKEW



1/3/2017

DRAWN BY: M. POOLE DATE: 7/16  
CHECKED BY: W.J. HARRIS DATE: 10/16  
DESIGN ENGINEER OF RECORD: W.J. HARRIS DATE: 10/16

DOCUMENT NOT CONSIDERED FINAL UNLESS ALL SIGNATURES COMPLETED

REVISIONS						SHEET NO.
NO.	BY:	DATE:	NO.	BY:	DATE:	S-7
1			3			TOTAL SHEETS
2			4			16