

5/28/99

REVISIONS

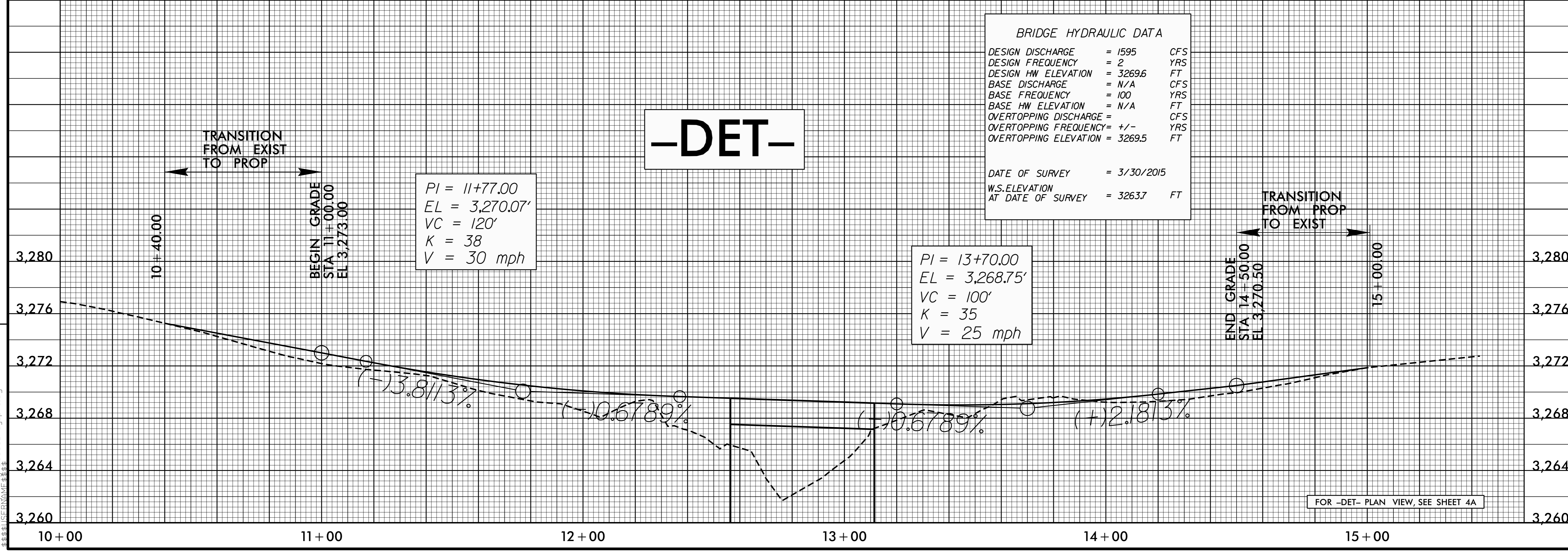
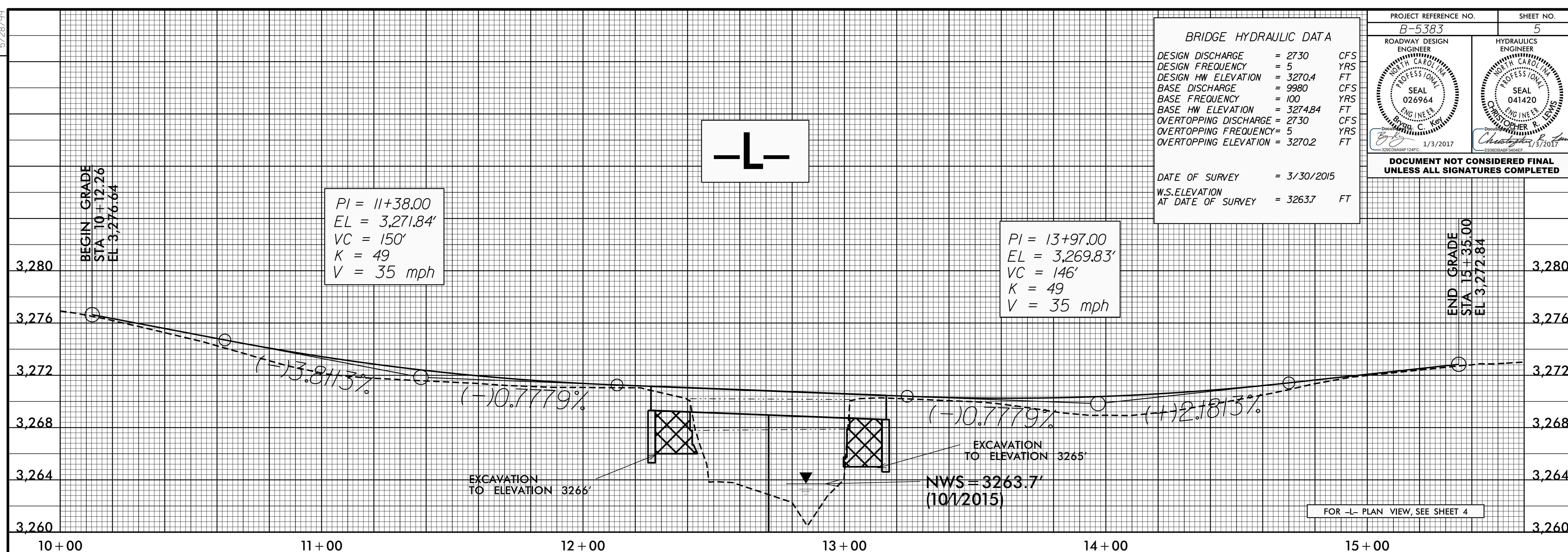
PROJECT REFERENCE NO. B-5383	SHEET NO. 5
ROADWAY DESIGN ENGINEER SEAL 026964 1/3/2017	HYDRAULICS ENGINEER SEAL 041420 1/3/2017

**BRIDGE HYDRAULIC DATA**

DESIGN DISCHARGE	= 2730	CFS
DESIGN FREQUENCY	= 5	YRS
DESIGN HW ELEVATION	= 3270.4	FT
BASE DISCHARGE	= 9980	CFS
BASE FREQUENCY	= 100	YRS
BASE HW ELEVATION	= 3274.84	FT
OVERTOPPING DISCHARGE	= 2730	CFS
OVERTOPPING FREQUENCY	= 5	YRS
OVERTOPPING ELEVATION	= 3270.2	FT

DATE OF SURVEY = 3/30/2015  
W.S.ELEVATION AT DATE OF SURVEY = 3263.7 FT

DOCUMENT NOT CONSIDERED FINAL UNLESS ALL SIGNATURES COMPLETED



28-DEC-2016 16:00 B5383-Rdy-pf1.dgn