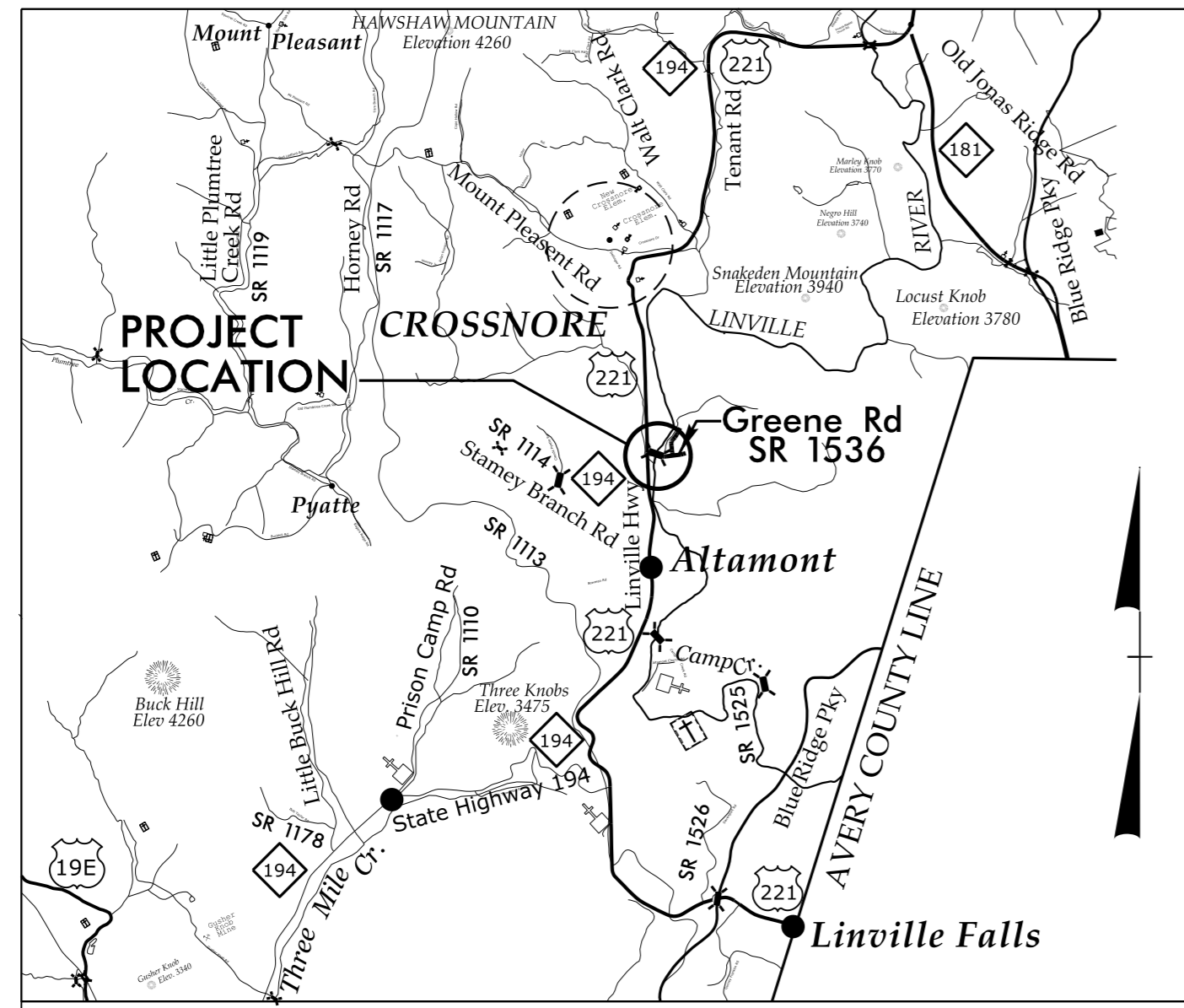


# SURVEY CONTROL SHEET B-5383



**Vicinity Map**  
(ON-SITE DETOUR)

BL POINT	DESC.	NORTH	EAST	ELEVATION	L STATION	OFFSET
B53831	GPS B5383-1	833202.4218	1131594.0450	3275.29	10+41.70	14.28 LT
B53832	GPS B5383-2	832877.0648	1131989.6253	3271.30	15+50.92	15.68 RT

**NC DOT GPS STATION B-5383-1  
LOCALIZED PROJECT COORDINATES**

N = 833202.4218  
E = 1131594.0450

**BEGIN TIP PROJECT B-5383  
-L- POT STA 10+12.26**

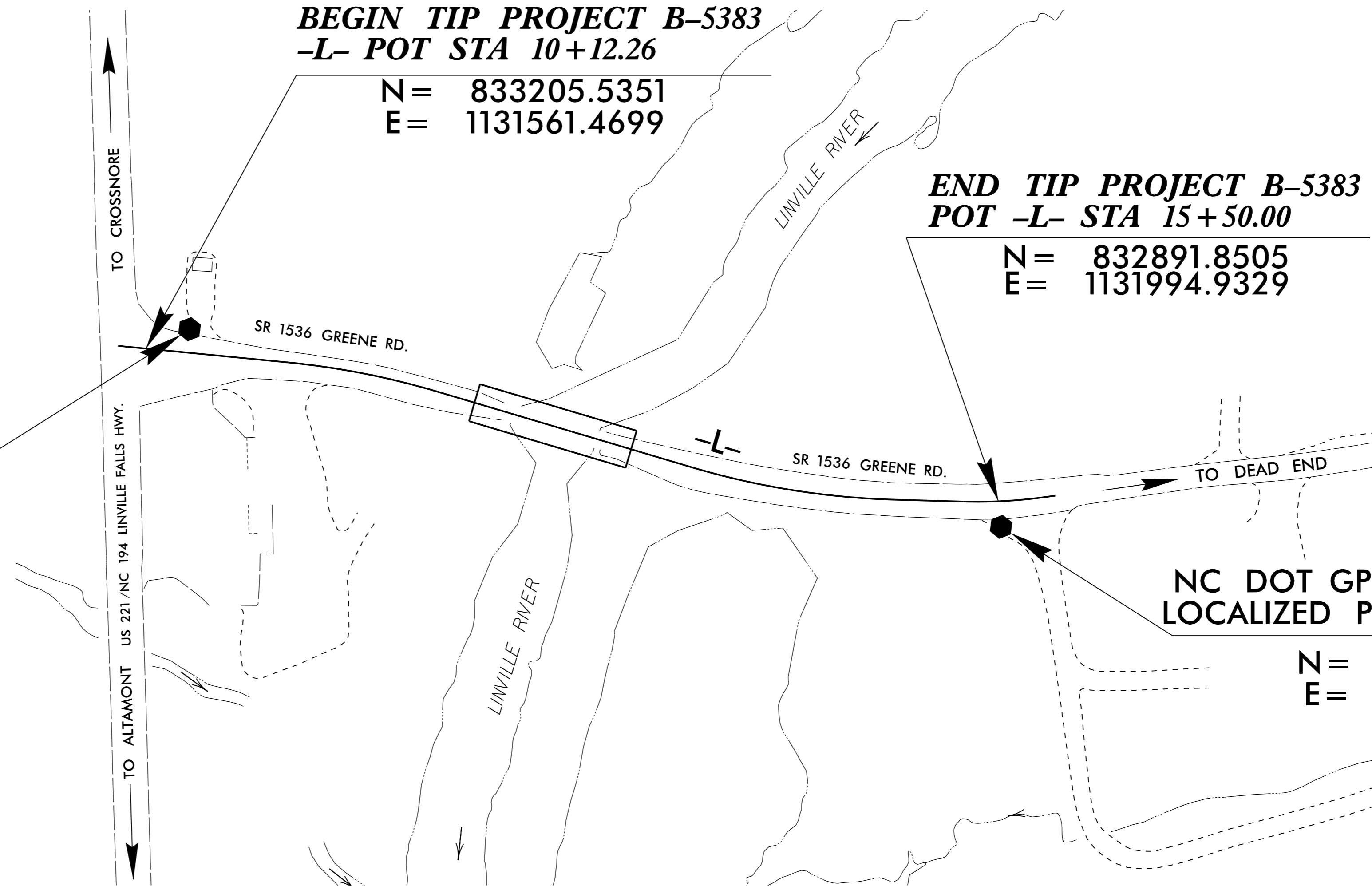
N = 833205.5351  
E = 1131561.4699

**END TIP PROJECT B-5383  
POT -L- STA 15+50.00**

N = 832891.8505  
E = 1131994.9329

**NC DOT GPS STATION B-5383-2  
LOCALIZED PROJECT COORDINATES**

N = 832877.0648  
E = 1131989.6253



**DATUM DESCRIPTION**

THE LOCALIZED COORDINATE SYSTEM DEVELOPED FOR THIS PROJECT IS BASED ON THE STATE PLANE COORDINATES ESTABLISHED BY NCDOT FOR MONUMENT "B-5383-2"  
WITH NAD 83/NSRS 2007 STATE PLANE GRID COORDINATES OF  
NORTHING: 832877.0648(±) EASTING: 1131989.6253(±)  
ELEVATION: 3271.2963(±)  
THE AVERAGE COMBINED GRID FACTOR USED ON THIS PROJECT (GROUND TO GRID) IS: 0.9998071990  
THE N.C. LAMBERT GRID BEARING AND LOCALIZED HORIZONTAL GROUND DISTANCE FROM "B-5383-2" TO -L- STATION 10+12.26 IS  
N 52°30'20" W 539.64'  
ALL LINEAR DIMENSIONS ARE LOCALIZED HORIZONTAL DISTANCES  
VERTICAL DATUM USED IS NAVD 88

**NOTES:**

- THE CONTROL DATA FOR THIS PROJECT CAN BE FOUND ELECTRONICALLY BY SELECTING PROJECT CONTROL DATA AT:  
[HTTPS://CONNECT.NCDOT.GOV/RESOURCES/LOCATION/](https://connect.ncdot.gov/resources/location/)  
THE FILES TO BE FOUND ARE AS FOLLOWS:  
B5383\_LS\_CONTROL.TXT  
SITE CALIBRATION INFORMATION HAS NOT BEEN PROVIDED FOR THIS PROJECT. IF FURTHER INFORMATION IS NEEDED, PLEASE CONTACT THE LOCATION AND SURVEYS UNIT.
- INDICATES GEODETIC CONTROL MONUMENTS USED OR SET FOR HORIZONTAL PROJECT CONTROL BY THE NCDOT LOCATION AND SURVEYS UNIT.  
PROJECT CONTROL ESTABLISHED USING GLOBAL POSITIONING SYSTEM.  
SEE GPS CALIBRATION SHEET FOR HORIZONTAL AND VERTICAL COORDINATE VALUES.

**NOTE: DRAWING NOT TO SCALE**