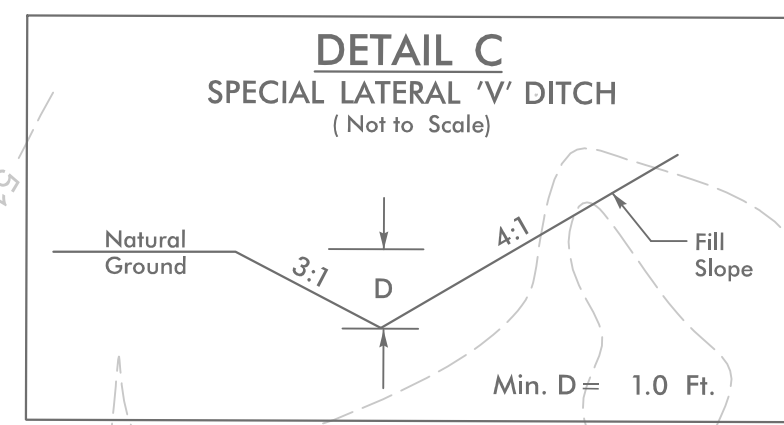
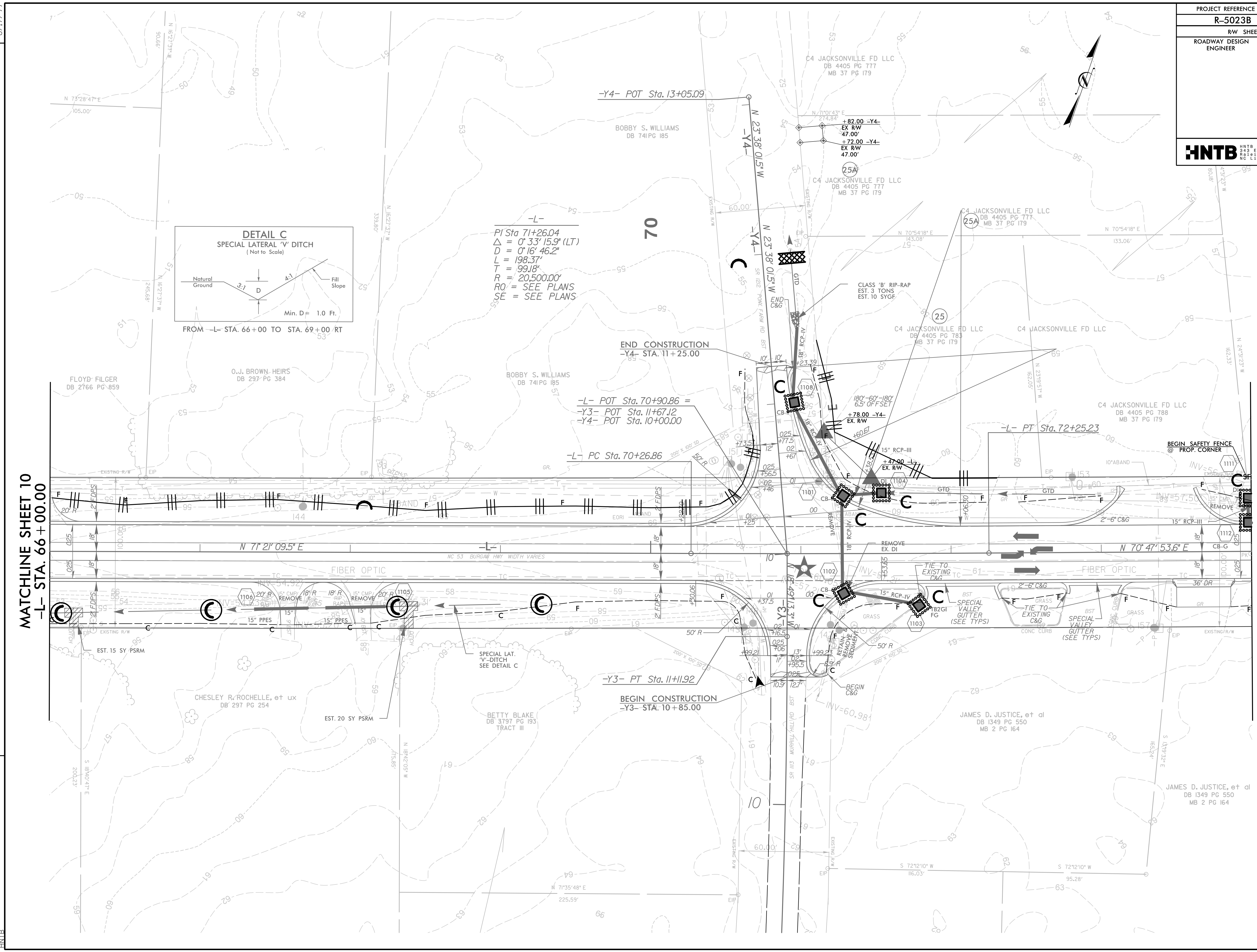


PROJECT REFERENCE NO.	SHEET NO.
R-5023B	EC-25/CONST.11
RW SHEET NO.	
ROADWAY DESIGN ENGINEER	HYDRAULICS ENGINEER
HNTB	
<small>HNTB NORTH CAROLINA, P.C. 343 E. SIX FORKS ROAD, SUITE 200 RALEIGH, NORTH CAROLINA 27609 LICENSE NO. 0-1954</small>	



-L-
 PI Sta 71+26.04
 $\Delta = 0^{\circ} 33' 15.9''$ (LT)
 $D = 0^{\circ} 16' 46.2''$
 $L = 198.37'$
 $T = 99.18'$
 $R = 20,500.00'$
 RO' = SEE PLANS
 SE = SEE PLANS

MATCHLINE SHEET 10
 -L- STA. 66+00.00

MATCHLINE SHEET 12
 -L- STA. 74+00.00

REVISIONS

44141.dwg
 R-5023B.ec.psh_11.dgn
 8/17/99