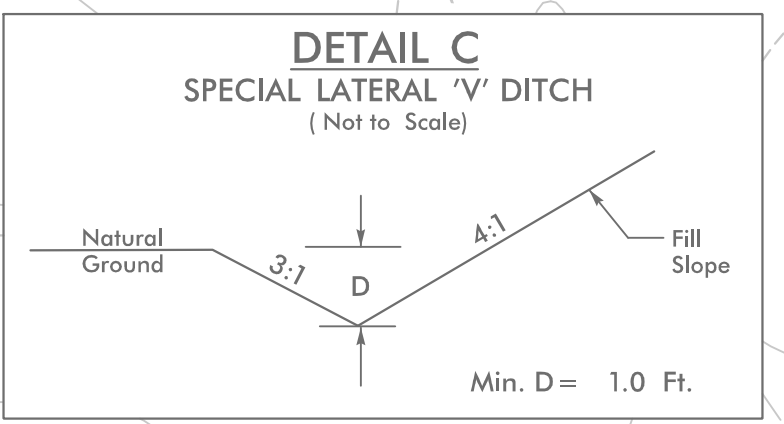


8/17/99

-L1-
 PI Sta 19+84.23
 $\Delta = 26^{\circ}59'05.5"$ (LT)
 $D = 1'23'48.4"$
 $L = 1,931.94'$
 $T = 984.23'$
 $R = 4,102.00'$
 RO = SEE PLANS
 SE = SEE PLANS

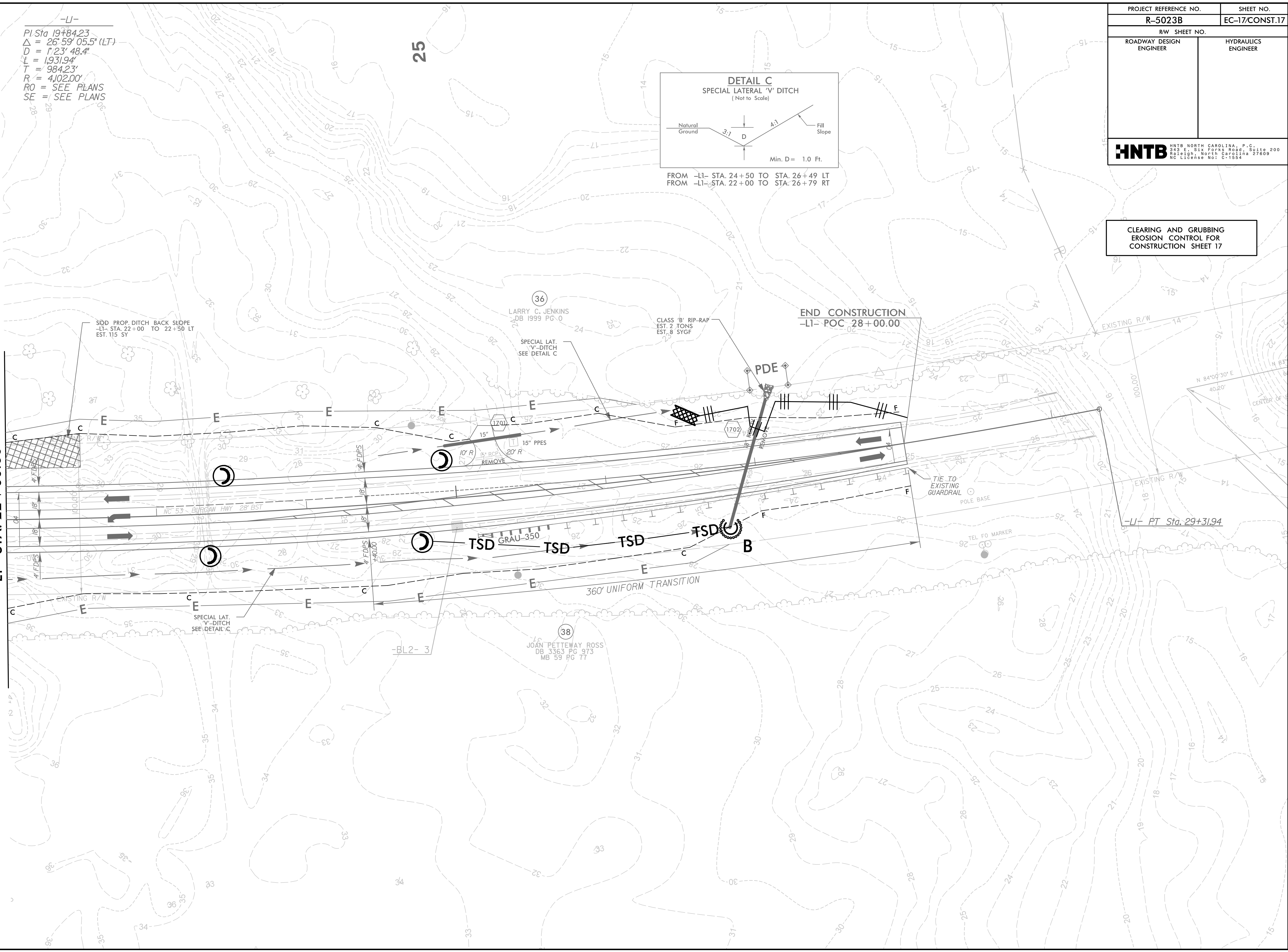
PROJECT REFERENCE NO. R-5023B	SHEET NO. EC-17/CONST.17
RW SHEET NO.	
ROADWAY DESIGN ENGINEER	HYDRAULICS ENGINEER
HNTB <small>HNTB NORTH CAROLINA, P.C. 343 E. SIX FORKS ROAD, SUITE 200 RALEIGH, NORTH CAROLINA 27609 NC LICENSE NO: C-1554</small>	



FROM -L1- STA. 24+50 TO STA. 26+49 LT
 FROM -L1- STA. 22+00 TO STA. 26+79 RT

CLEARING AND GRUBBING
 EROSION CONTROL FOR
 CONSTRUCTION SHEET 17

MATCHLINE PLAN SHEET 16
 -L1- STA. 22+00.00



REVISIONS

4/1/00 PM
 R5023B.ec.psh_17.dgn
 HNTB