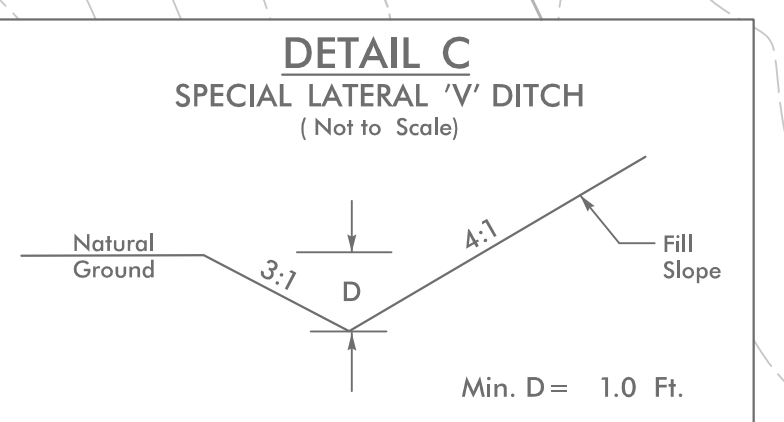
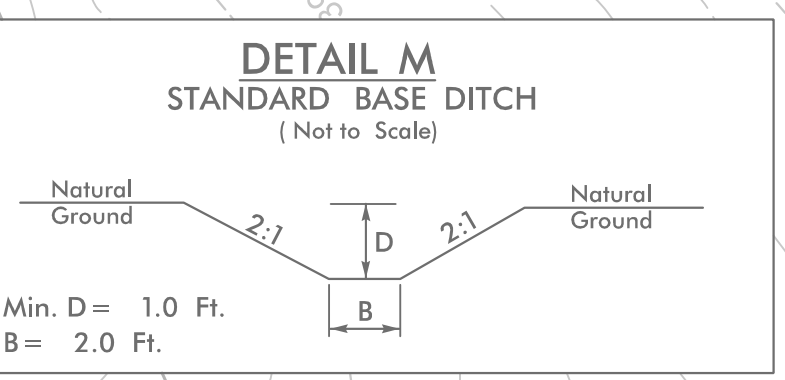
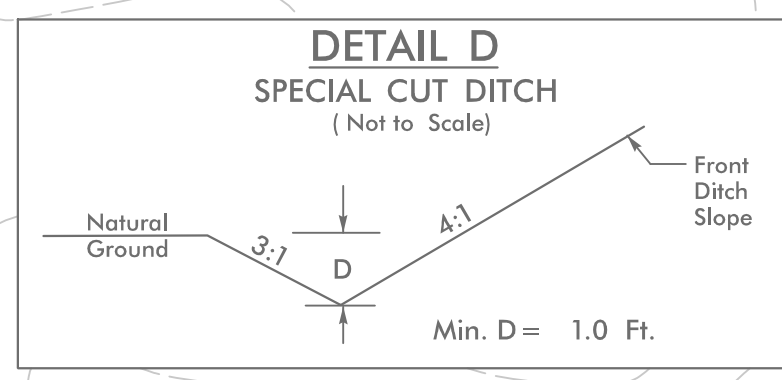


PROJECT REFERENCE NO.	SHEET NO.
R-5023B	EC-16CONSTR. 16
RW SHEET NO.	
ROADWAY DESIGN ENGINEER	HYDRAULICS ENGINEER
HNTB	
<small>HNTB NORTH CAROLINA, P.C. 343 E. SIX FORKS ROAD, SUITE 200 RALEIGH, NORTH CAROLINA 27609 NC LICENSE NO. C-1554</small>	

$PI\ Sta\ 19+84.23$
 $\Delta = 26^{\circ}59'05.5" (LT)$
 $D = 1723'48.4"$
 $L = 1931.94'$
 $T = 984.23'$
 $R = 4102.00'$
 $RO = SEE\ PLANS$
 $SE = SEE\ PLANS$



FROM -L1- STA. 15+00 TO STA. 18+00 LT
 FROM -Y9- STA. 12+50 TO STA. 15+00 LT
 FROM -Y9- STA. 13+00 TO STA. 15+00 RT

-L1- STA. 17+38 RT

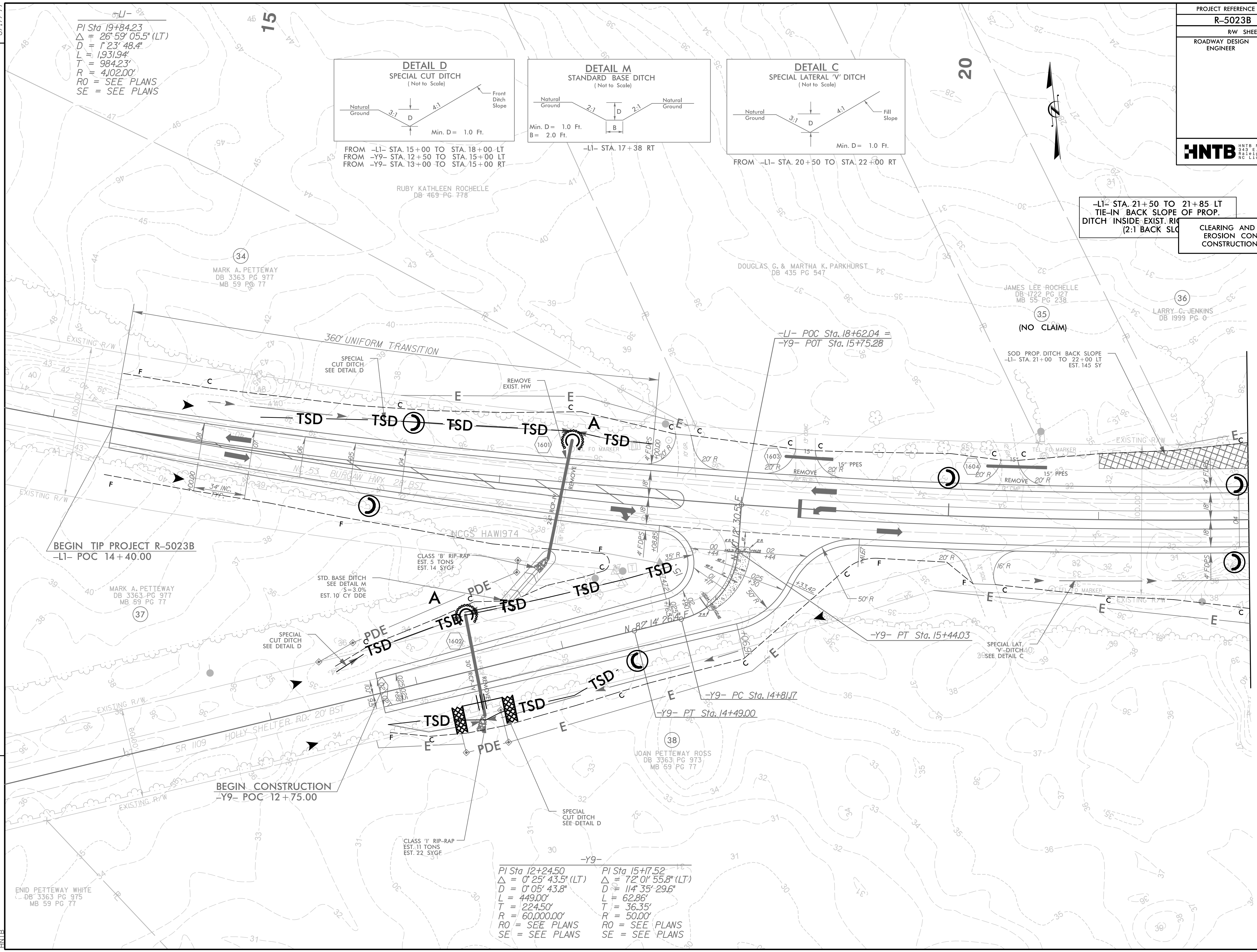
FROM -L1- STA. 20+50 TO STA. 22+00 RT

-L1- STA. 21+50 TO 21+85 LT
 TIE-IN BACK SLOPE OF PROP.
 DITCH INSIDE EXIST. R/W
 (2:1 BACK SLOPE)

CLEARING AND GRUBBING
 EROSION CONTROL FOR
 CONSTRUCTION SHEET 16

REVISIONS

MATCHLINE PLAN SHEET 17
-L1- STA. 22+00.00



BEGIN TIP PROJECT R-5023B
 -L1- POC 14+40.00

BEGIN CONSTRUCTION
 -Y9- POC 12+75.00

$PI\ Sta\ 12+24.50$
 $\Delta = 0^{\circ}25'43.5" (LT)$
 $D = 0^{\circ}05'43.8"$
 $L = 449.00'$
 $T = 224.50'$
 $R = 60,000.00'$
 $RO = SEE\ PLANS$
 $SE = SEE\ PLANS$

$PI\ Sta\ 15+17.52$
 $\Delta = 72^{\circ}01'55.8" (LT)$
 $D = 114^{\circ}35'29.6"$
 $L = 62.86'$
 $T = 36.35'$
 $R = 50.00'$
 $RO = SEE\ PLANS$
 $SE = SEE\ PLANS$

4:10:33 PM
 R-5023B-EC-16CONSTR-16.dgn
 HNTB

ENID PETTEWAY WHITE
 DB 3363 PG 975
 MB 59 PG 77

MARK A. PETTEWAY
 DB 3363 PG 977
 MB 59 PG 77

MARK A. PETTEWAY
 DB 3363 PG 977
 MB 59 PG 77

RUBY KATHLEEN ROCHELLE
 DB 469 PG 778

DOUGLAS, G. & MARTHA K. PARKHURST
 DB 435 PG 547

JAMES LEE ROCHELLE
 DB 1722 PG 127
 MB 55 PG 238

LARRY C. JENKINS
 DB 1999 PG 8

JOAN PETTEWAY ROSS
 DB 3363 PG 973
 MB 59 PG 77