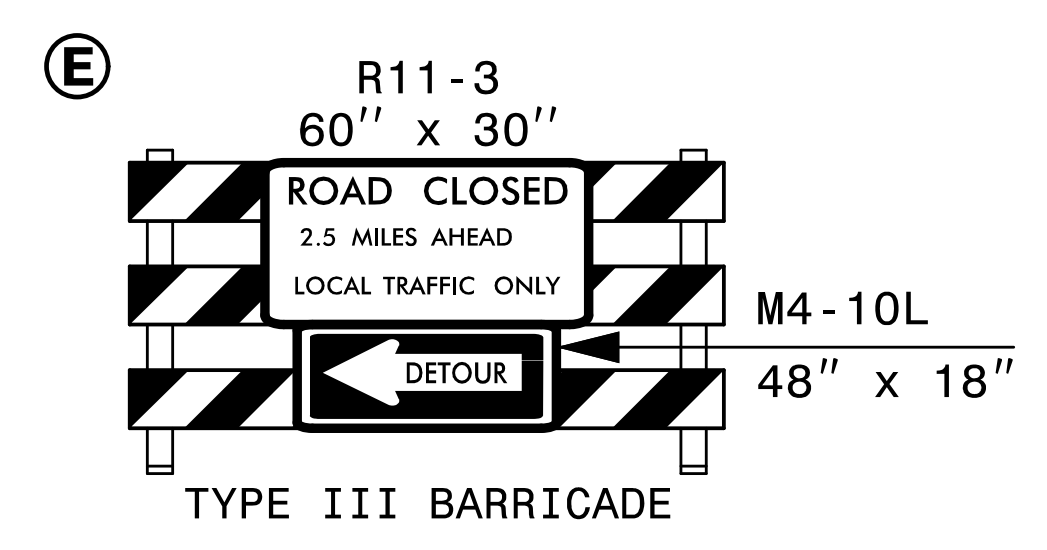
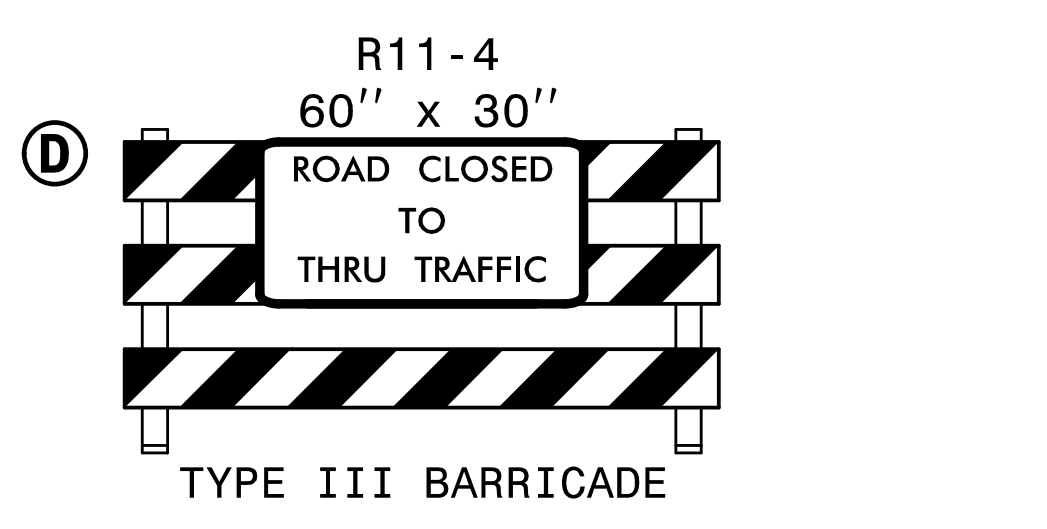
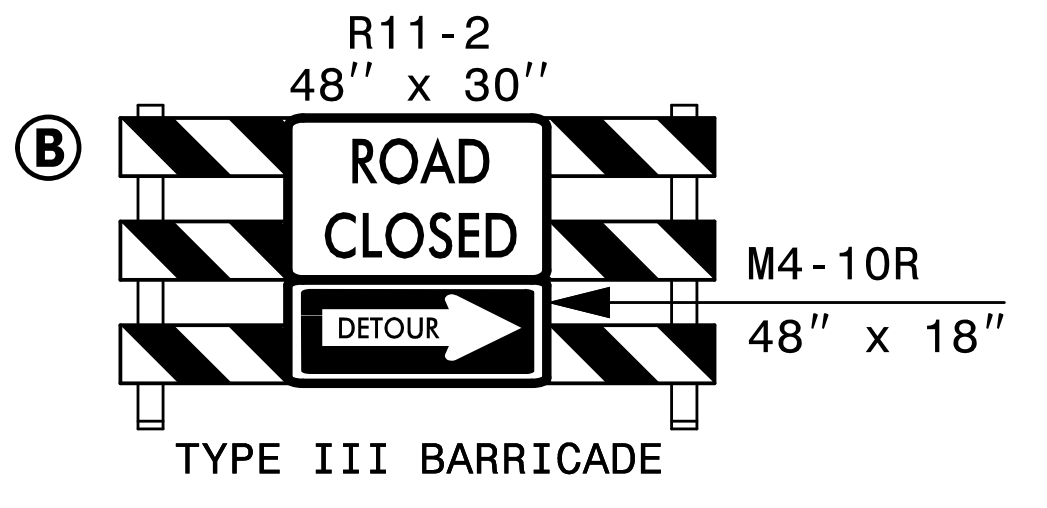
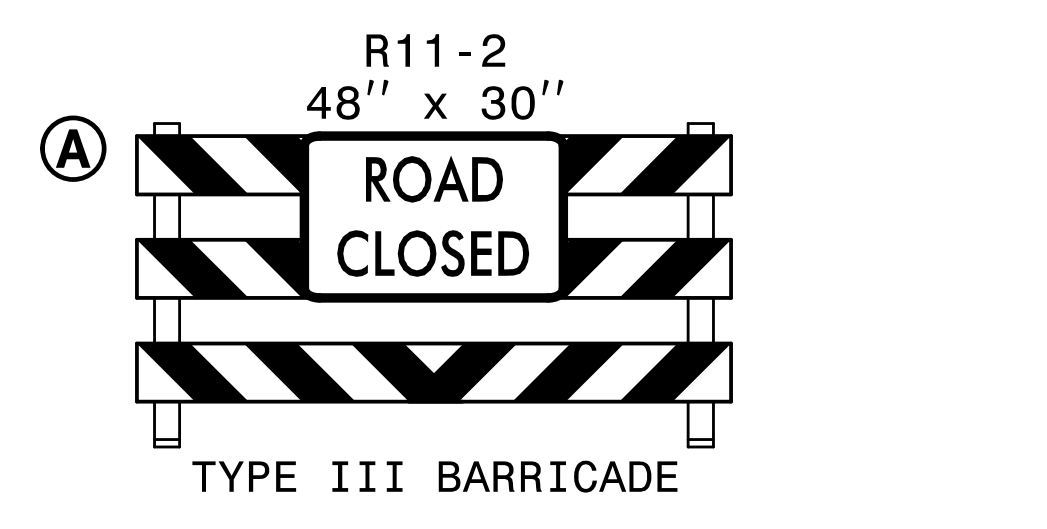


- ① **HAWS RUN RD** SP-1  
 DETOUR M4-8 24" X 12"  
 → M6-1 21" X 15"
- ② **HAWS RUN RD** SP-1  
 DETOUR M4-8 24" X 12"  
 ← M6-1 L 21" X 15"
- ③ **HAWS RUN RD** SP-1  
 DETOUR M4-8 24" X 12"  
 ↑ M6-3 21" X 15"
- ④ **END DETOUR** M4-8 A 24" X 18"
- ⑤ **TO** M4-5 24" X 12"  
 53 MI-5  
 → M6-1 21" X 15"
- ⑥ **TO** M4-5 24" X 12"  
 53 MI-5  
 ← M6-1 L 21" X 15"



F

MESSAGE NO. 1	MESSAGE NO. 2
HAWS RUN RD CLOSED AHEAD	DETOUR NEXT RIGHT

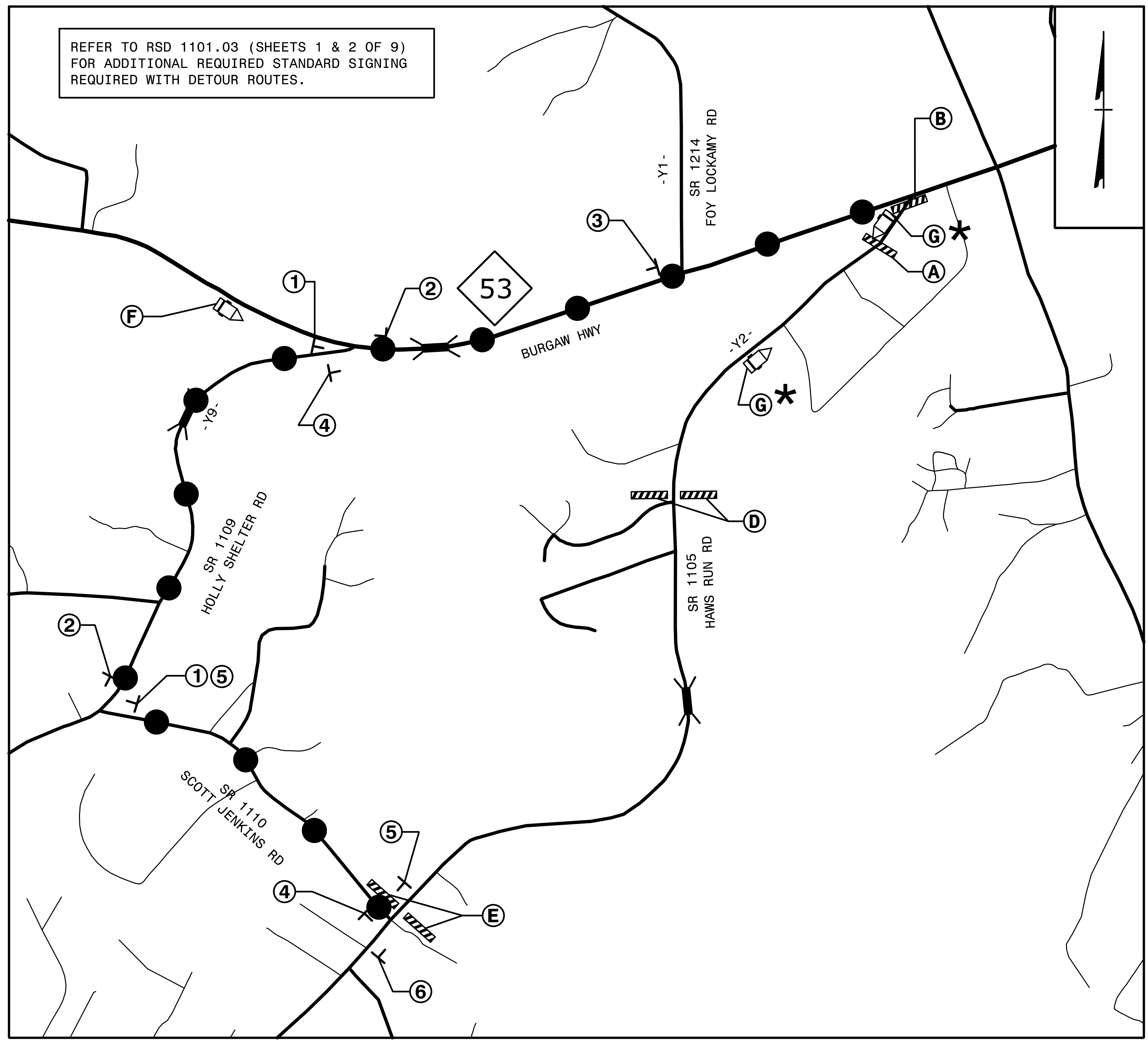
CHANGEABLE MESSAGE SIGN

\* G

MESSAGE NO. 1	MESSAGE NO. 2
HAWS RUN RD TO BE CLOSED	XX/XX/XX TO XX/XX/XX

CHANGEABLE MESSAGE SIGN

REFER TO RSD 1101.03 (SHEETS 1 & 2 OF 9) FOR ADDITIONAL REQUIRED STANDARD SIGNING REQUIRED WITH DETOUR ROUTES.



DETOUR USED IN AREA 2, PHASE I, STEP 5 FOR PIPE INSTALLATION

\* TWO WEEKS PRIOR TO CLOSURE, USE CMS BOARDS TO ALERT MOTORIST OF UPCOMING ROAD CLOSURE. PLACE BOARDS AS DIRECTED BY THE ENGINEER (UP TO 1/2 MILE FROM CLOSURE). REMOVE OR RELOCATE BOARDS WHEN CLOSURE IS IMPLEMENTED.

SEE SHEET TMP-2C FOR SP-1 SIGN DESIGN

7/25/2016  
 11:50:23AM  
 ...R5023B-TC-TMP\_02Adetour.dgn

QA/QC STAGE:  
 REVIEW:  
 CONCUR:  
 REVISE:  
 VERIFY:

**HNTB** HNTB NORTH CAROLINA, P.C.  
 343 E. SIX FORKS ROAD, SUITE 200  
 RALEIGH, NORTH CAROLINA 27609  
 NC LICENSE NO: C-1554

DOCUMENT NOT CONSIDERED FINAL UNLESS ALL SIGNATURES COMPLETED

APPROVED:  
 Rhonda B. Early  
 F34CAF5AC0BF48A  
 ENGINEER  
 DATE: 7/25/2016

SEAL  
 NORTH CAROLINA PROFESSIONAL ENGINEER  
 RHONDA B. EARLY  
 023521

DIVISION OF HIGHWAYS  
 STATE OF NORTH CAROLINA  
 DEPARTMENT OF TRANSPORTATION  
 WORK ZONE TRAFFIC CONTROL

TRANSPORTATION MANAGEMENT PLAN

DETOUR #2  
 -Y2- AT -L-

...R5023B-TC-TMP\_02Adetour.dgn