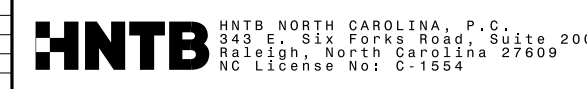
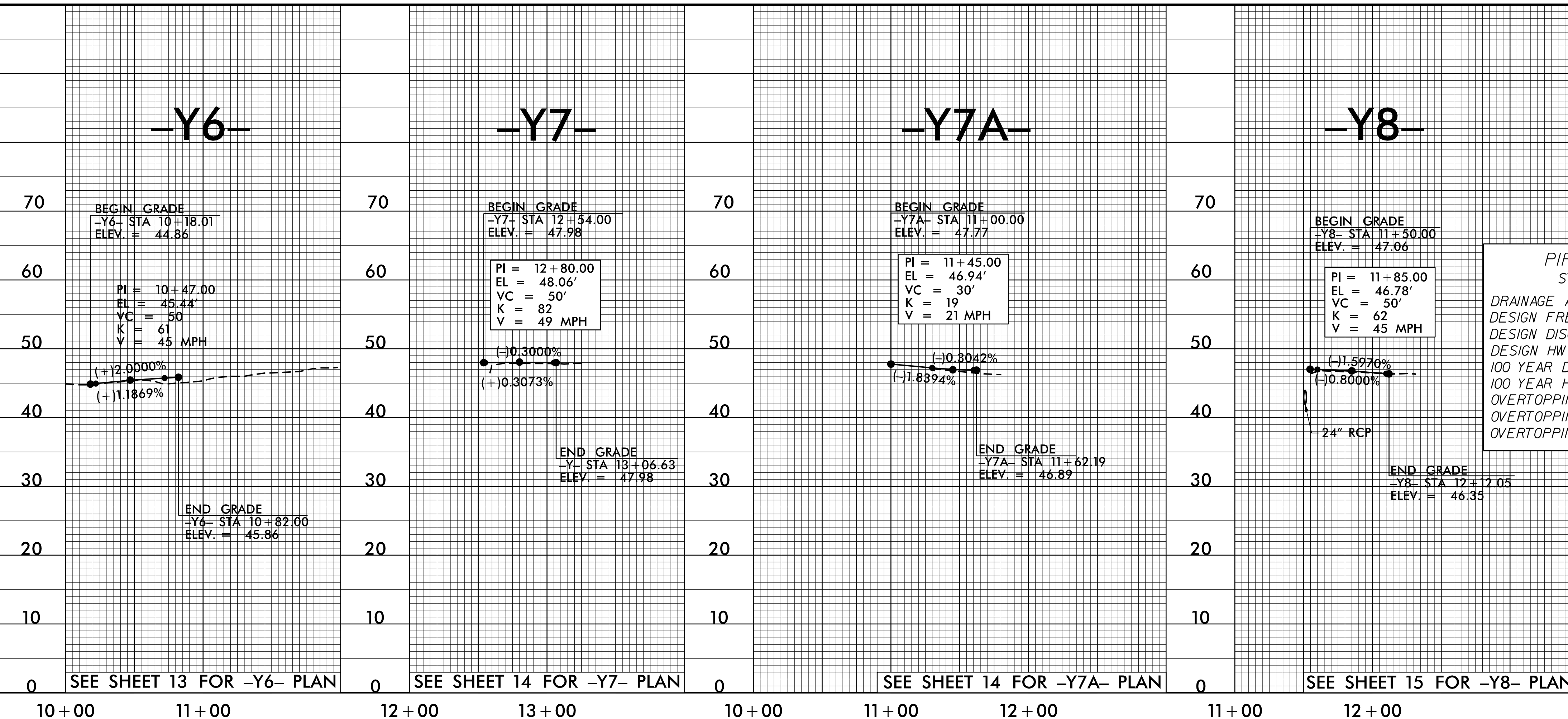


5/28/19



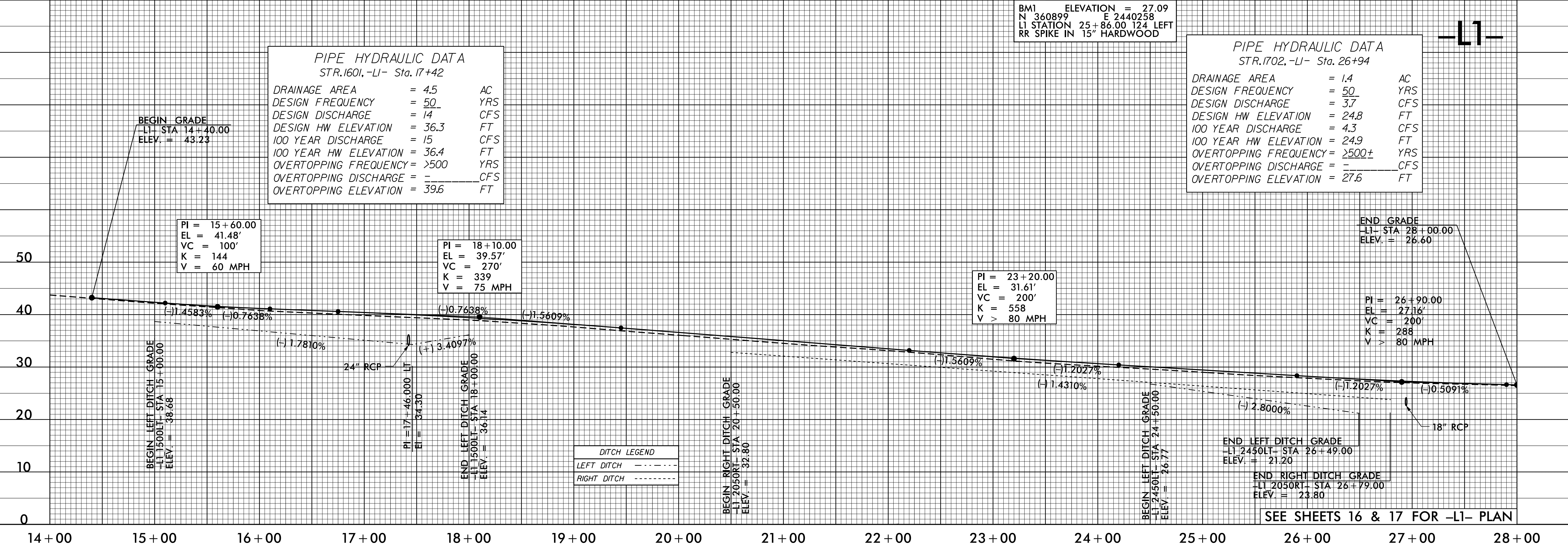
PROJECT REFERENCE NO. R-5023B	SHEET NO. 22
ROADWAY DESIGN ENGINEER W. CRAIG PARKER SEAL 25474 NORTH CAROLINA PROFESSIONAL ENGINEERS JAMES A. BYRD	HYDRAULICS ENGINEER JAMES A. BYRD SEAL 15764 NORTH CAROLINA PROFESSIONAL ENGINEERS

DOCUMENT NOT CONSIDERED FINAL UNLESS ALL SIGNATURES COMPLETED



PIPE HYDRAULIC DATA
STR.1510IN, -Y8- Sta. 11+51

DRAINAGE AREA	= 10.7	AC
DESIGN FREQUENCY	= 25	YRS
DESIGN DISCHARGE	= 15	CFS
DESIGN HW ELEVATION	= 45.1	FT
100 YEAR DISCHARGE	= 24	CFS
100 YEAR HW ELEVATION	= 46.2	FT
OVERTOPPING FREQUENCY	= 100 (+)	YRS
OVERTOPPING DISCHARGE	= 30	CFS
OVERTOPPING ELEVATION	= 46.8	FT



PIPE HYDRAULIC DATA
STR.1702, -L1- Sta. 26+94

DRAINAGE AREA	= 1.4	AC
DESIGN FREQUENCY	= 50	YRS
DESIGN DISCHARGE	= 3.7	CFS
DESIGN HW ELEVATION	= 24.8	FT
100 YEAR DISCHARGE	= 4.3	CFS
100 YEAR HW ELEVATION	= 24.9	FT
OVERTOPPING FREQUENCY	= >500±	YRS
OVERTOPPING DISCHARGE	= -	CFS
OVERTOPPING ELEVATION	= 27.6	FT

03-10-V-2016 12:03 49353 Division 3 Environmental Outsourcing\Task Order 02 - NC 53\Roadway\Proj\RE023BC-RDY_PFL_PSH-22.dgn

SEE SHEETS 16 & 17 FOR -L1- PLAN