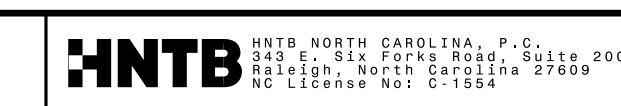


5/26/19

BM6 ELEVATION = 45.67
N 364426 E 2451143
L STATION 103+42.00 111 LEFT
RR SPIKE IN 36" HARDWOOD

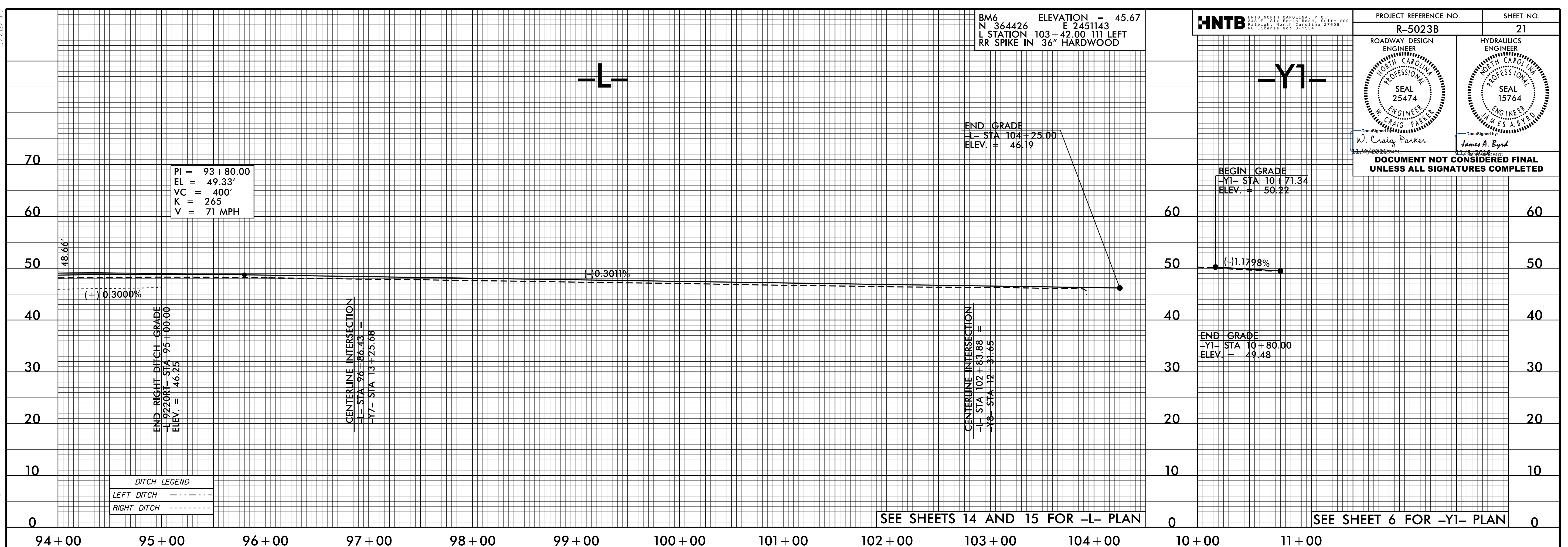


PROJECT REFERENCE NO. R-5023B	SHEET NO. 21
ROADWAY DESIGN ENGINEER W. CRAIG PARKER NORTH CAROLINA PROFESSIONAL SEAL 25474	HYDRAULICS ENGINEER JAMES A. BYRD NORTH CAROLINA PROFESSIONAL SEAL 15764

DocuSigned by:
W. Craig Parker
11/14/2016 11:04 AM

DocuSigned by:
James A. Byrd
11/13/2016 11:04 AM

**DOCUMENT NOT CONSIDERED FINAL
UNLESS ALL SIGNATURES COMPLETED**



03-1011-2016 12:03 49353 Division 3 Environmental Outsourcing\Task Order 02 - NC 53\Roadway\Proj\RE023BC-RDY_PFL_PSH-21.dgn

PIPE HYDRAULIC DATA
STR.0906, -Y2- Sta. 12+15

DRAINAGE AREA	= 28	AC
DESIGN FREQUENCY	= 25	YRS
DESIGN DISCHARGE	= 28	CFS
DESIGN HW ELEVATION	= 52.8	FT
100 YEAR DISCHARGE	= 45	CFS
100 YEAR HW ELEVATION	= -	FT
OVERTOPPING FREQUENCY	= 50	YRS
OVERTOPPING DISCHARGE	= 38	CFS
OVERTOPPING ELEVATION	= 53.5	FT

