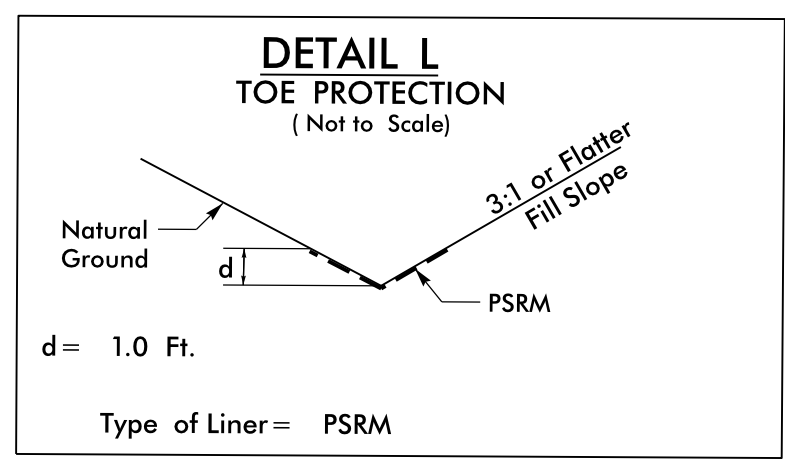


REVISIONS

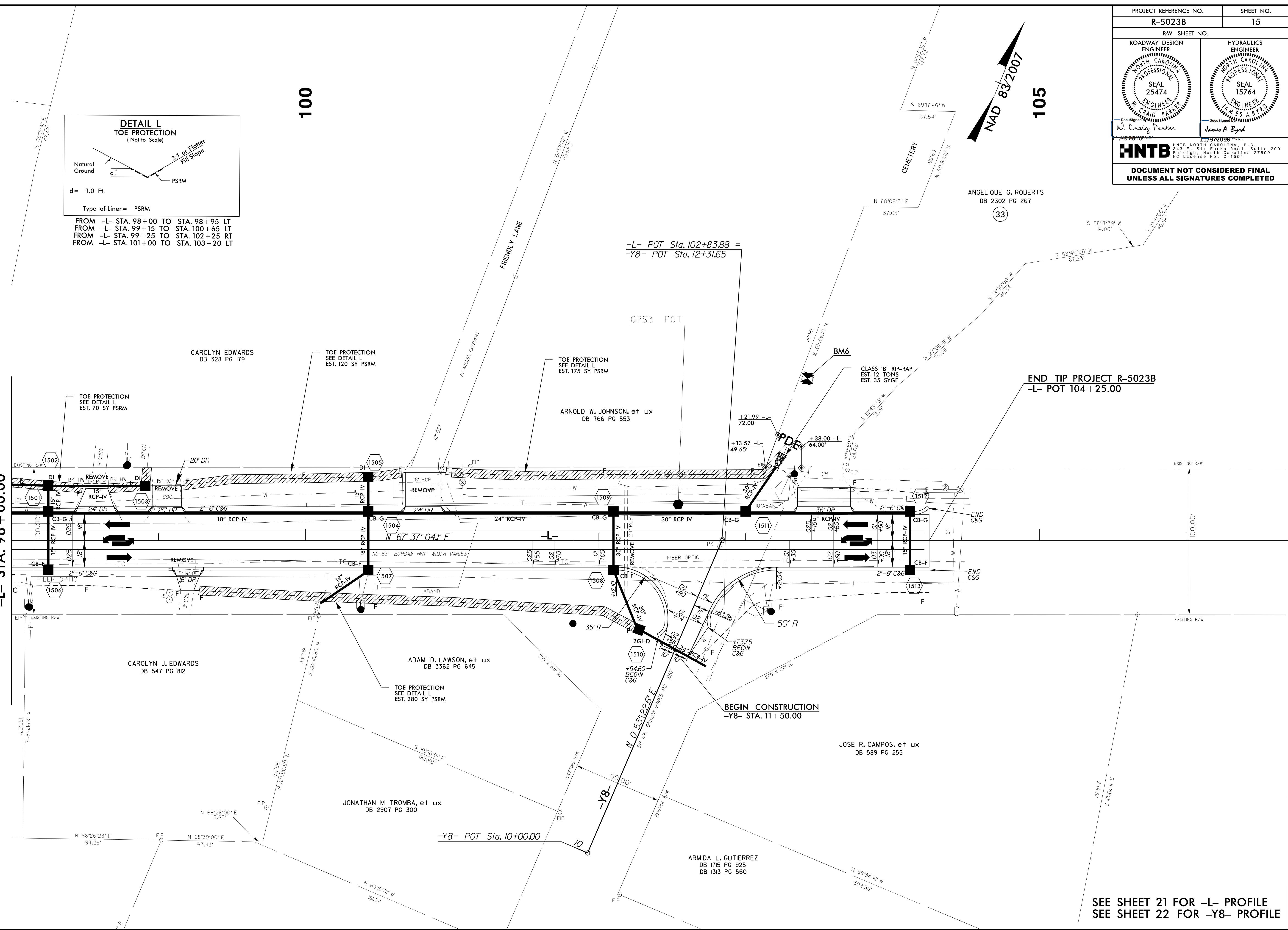
100

105

MATCHLINE SHEET 14
-L- STA. 98+00.00



FROM -L- STA. 98+00 TO STA. 98+95 LT
 FROM -L- STA. 99+15 TO STA. 100+65 LT
 FROM -L- STA. 99+25 TO STA. 102+25 RT
 FROM -L- STA. 101+00 TO STA. 103+20 LT



PROJECT REFERENCE NO. R-5023B	SHEET NO. 15
RW SHEET NO.	
ROADWAY DESIGN ENGINEER W. Craig Parker SEAL 25474	HYDRAULICS ENGINEER James A. Byrd SEAL 15764
DOCUMENT NOT CONSIDERED FINAL UNLESS ALL SIGNATURES COMPLETED	

ANGELIQUE G. ROBERTS
DB 2302 PG 267

33

END TIP PROJECT R-5023B
-L- POT 104+25.00

BEGIN CONSTRUCTION
-Y8- STA. 11+50.00

JOSE R. CAMPOS, et ux
DB 589 PG 255

ARMIDA L. GUTIERREZ
DB 175 PG 925
DB 1313 PG 560

SEE SHEET 21 FOR -L- PROFILE
SEE SHEET 22 FOR -Y8- PROFILE