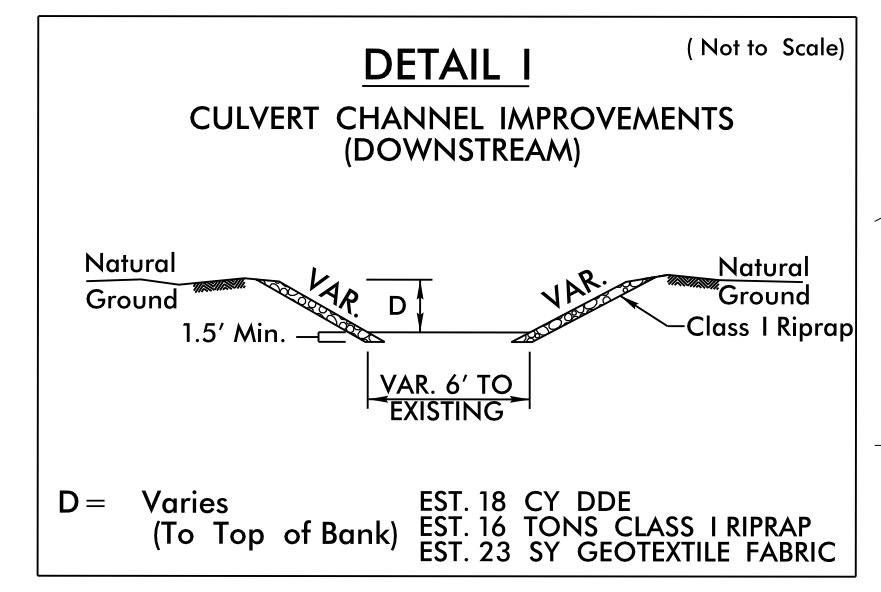
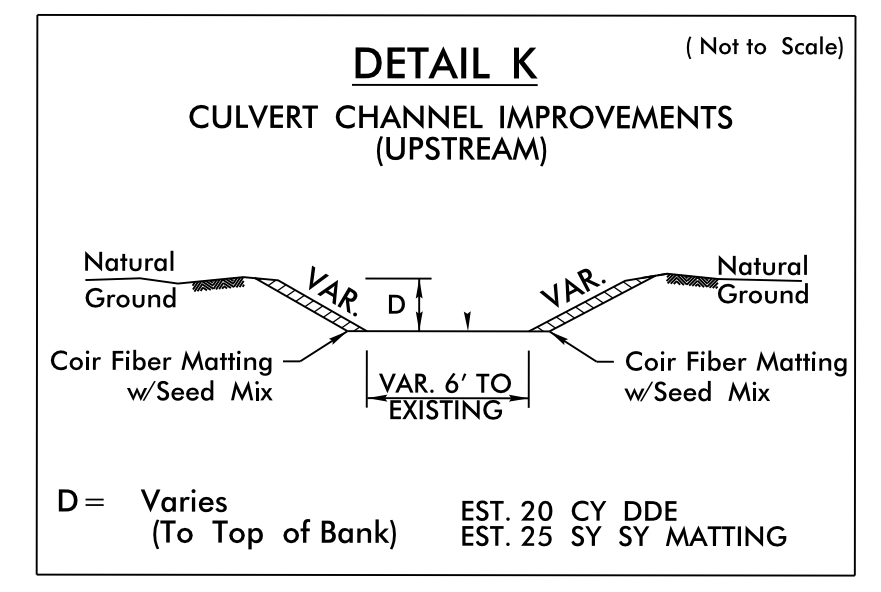


PROJECT REFERENCE NO.	R-5023B	SHEET NO.	13
RW SHEET NO.		HYDRAULICS ENGINEER	
ROADWAY DESIGN ENGINEER	SEAL 25474	SEAL 15764	
W. Craig Parker		James A. Byrd	
HNTB HNTB NORTH CAROLINA, P.C. 343 E. SIX FORKS ROAD, SUITE 200 RALEIGH, NORTH CAROLINA 27609 NC LICENSE NO. C-1854			
DOCUMENT NOT CONSIDERED FINAL UNLESS ALL SIGNATURES COMPLETED			

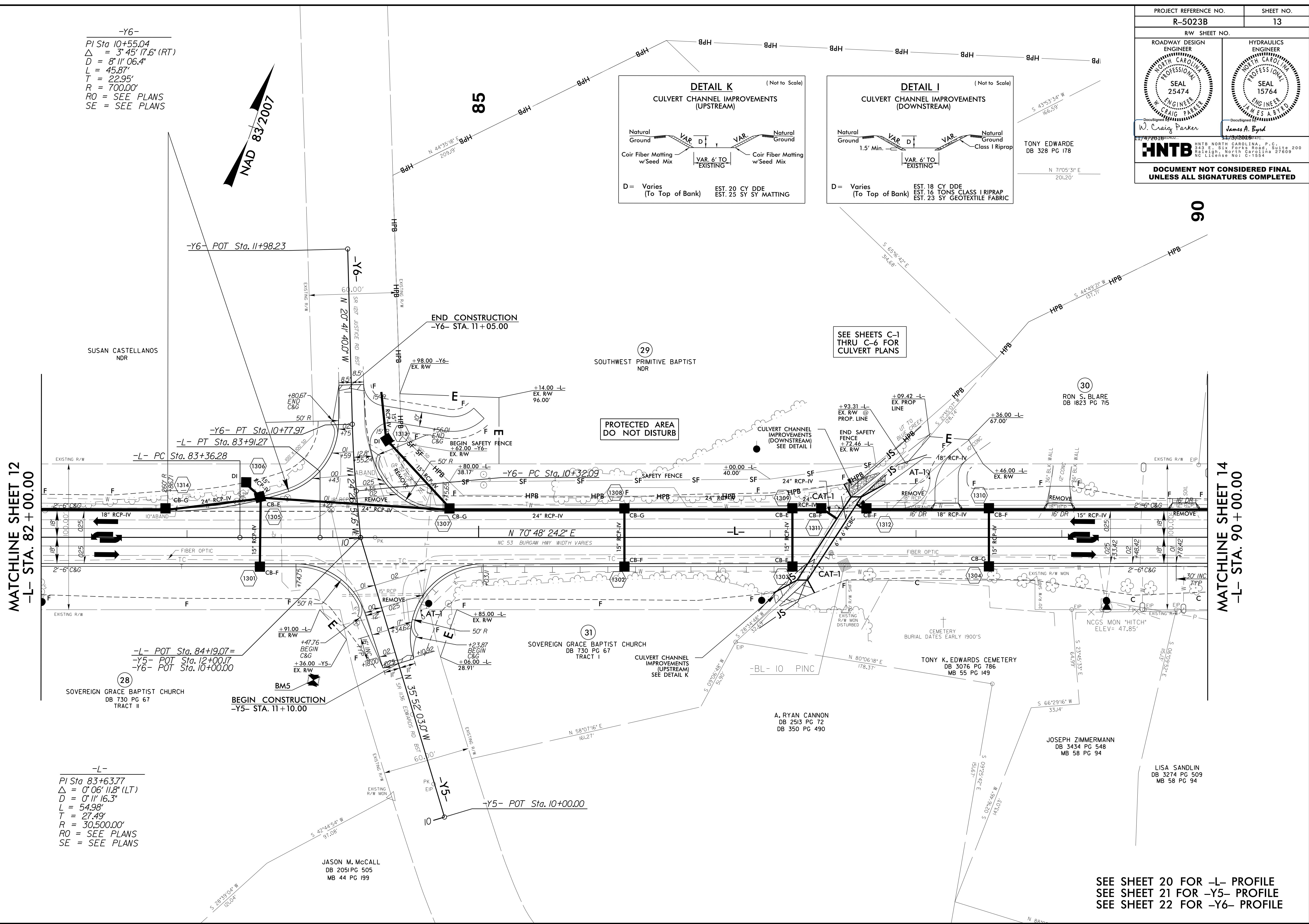
-Y6-
 PI Sta 10+55.04
 $\Delta = 3^{\circ} 45' 17.6" (RT)$
 $D = 8^{\circ} 11' 06.4"$
 $L = 45.87'$
 $T = 22.95'$
 $R = 700.00'$
 RO = SEE PLANS
 SE = SEE PLANS

-L-
 PI Sta 83+63.77
 $\Delta = 0^{\circ} 06' 11.8" (LT)$
 $D = 0^{\circ} 11' 16.3"$
 $L = 54.98'$
 $T = 27.49'$
 $R = 30,500.00'$
 RO = SEE PLANS
 SE = SEE PLANS



MATCHLINE SHEET 12
 -L- STA. 82 + 00.00

MATCHLINE SHEET 14
 -L- STA. 90 + 00.00



SEE SHEET 20 FOR -L- PROFILE
 SEE SHEET 21 FOR -Y5- PROFILE
 SEE SHEET 22 FOR -Y6- PROFILE