


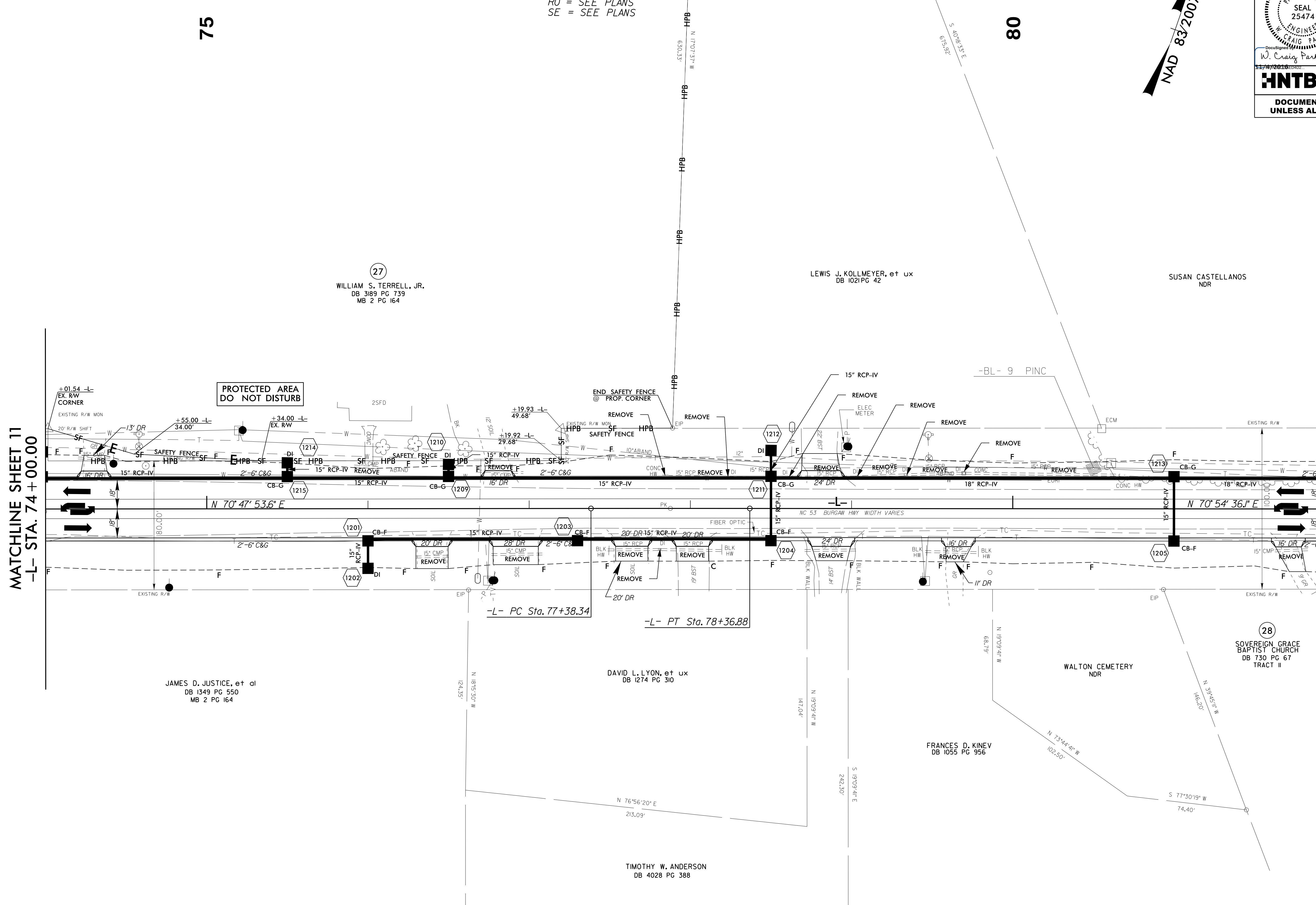
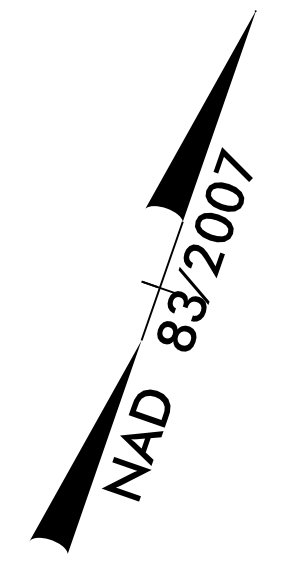
8/17/99

03-NOV-2016 12:02 C:\Users\jstevens\Documents\49353 Division 3 Environmental\Task Order 02 - NC 53\Roadway\Proj\N5023BC-RDY_PSH_12.dgn

REVISIONS

-L-
PI Sta 77+87.61
 $\Delta = 0^{\circ}06'42.5''$ (RT)
 $D = 0^{\circ}06'48.4''$
 $L = 98.54'$
 $T = 49.27'$
 $R = 50,500.00'$
RO = SEE PLANS
SE = SEE PLANS

PROJECT REFERENCE NO. R-5023B	SHEET NO. 12
RW SHEET NO.	
ROADWAY DESIGN ENGINEER NORTH CAROLINA PROFESSIONAL SEAL 25474 W. Craig Parker	HYDRAULICS ENGINEER NORTH CAROLINA PROFESSIONAL SEAL 15764 James A. Byrd
 HNTB NORTH CAROLINA, P.C. 3443 E. SIX FORKS ROAD, SUITE 200 RALEIGH, NORTH CAROLINA 27609 NC LICENSE NO. C-1554	
DOCUMENT NOT CONSIDERED FINAL UNLESS ALL SIGNATURES COMPLETED	



SEE SHEET 20 FOR -L- PROFILE