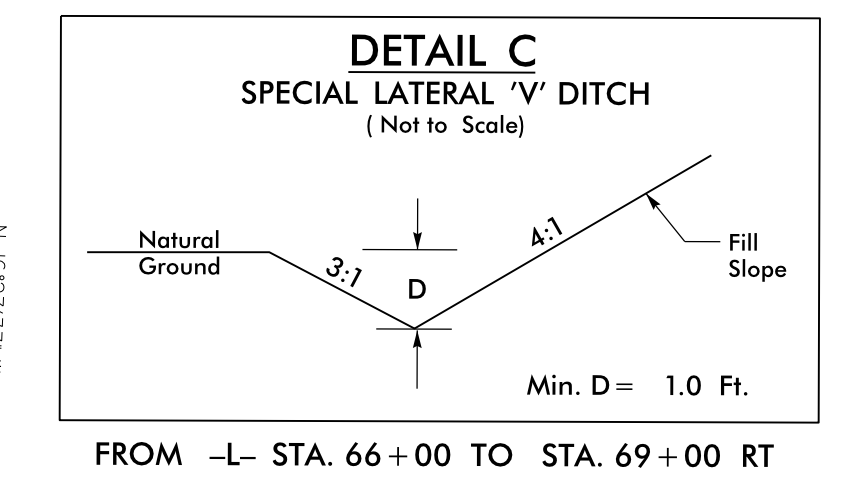
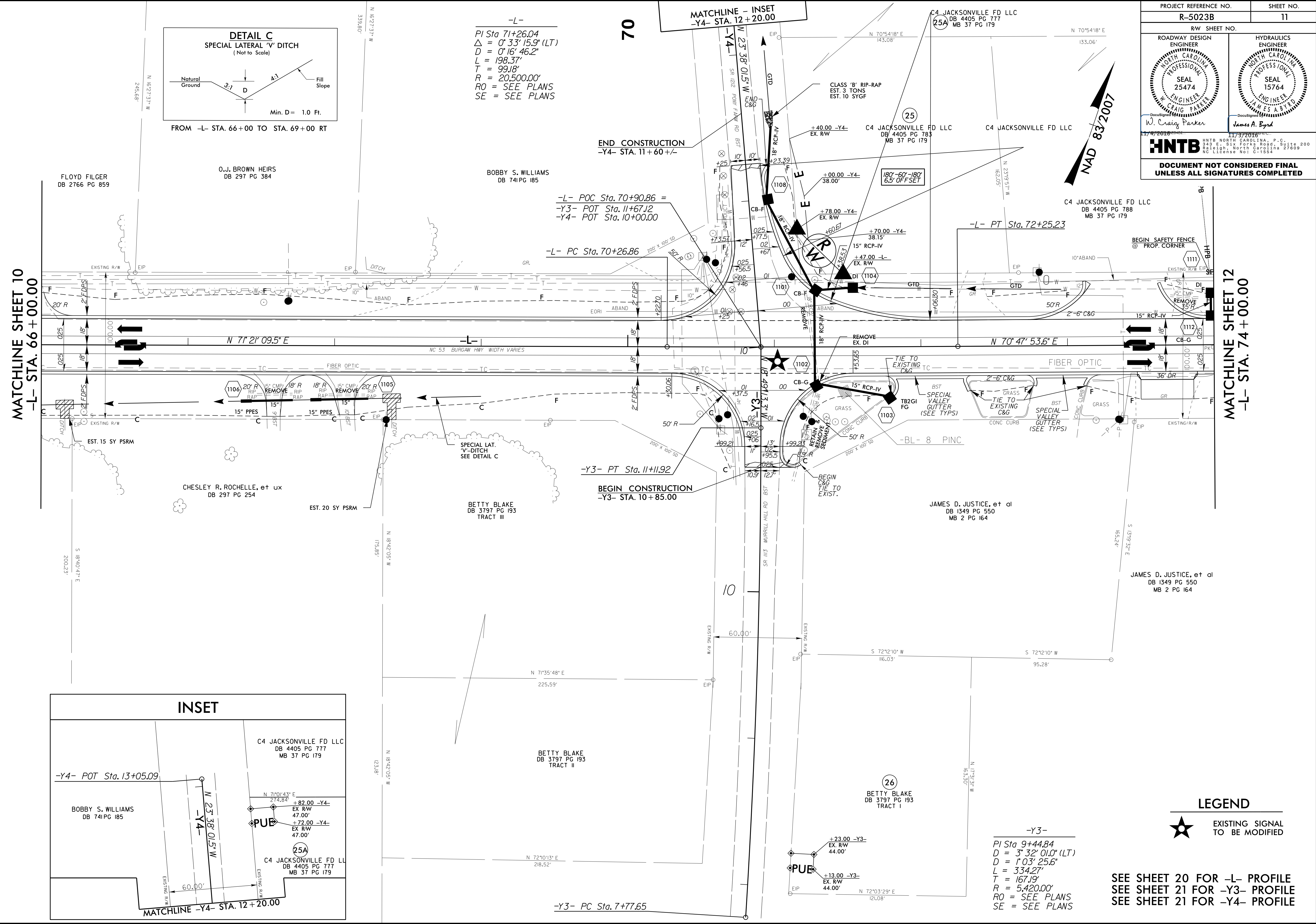


8/17/99

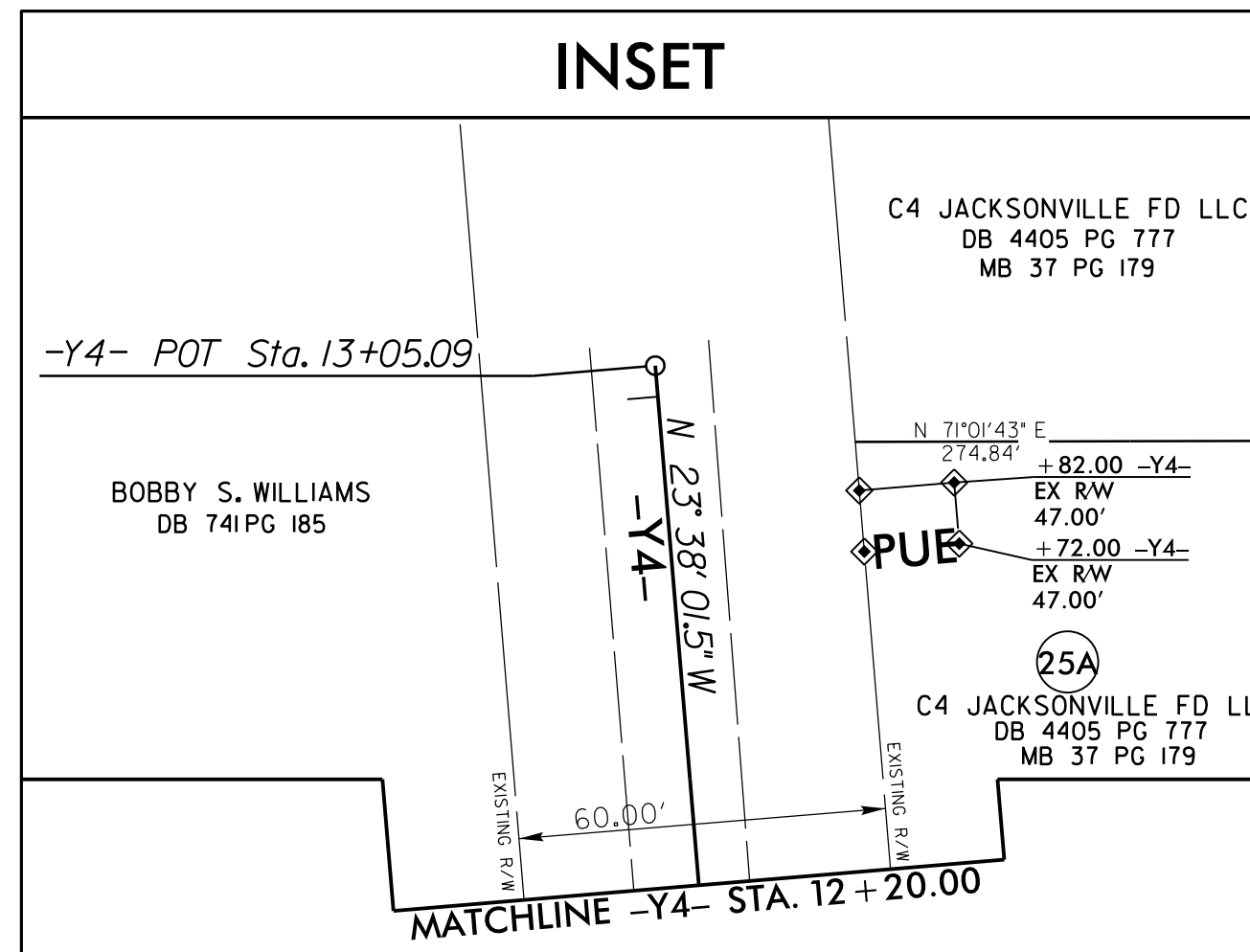
03-NOV-2016 12:02 C:\Users\jstiles\Documents\Projects\3 Environmental\Task Order 02 - NC 53\Roadway\Pro\NF5023BC-RDY\_PSH\_11.dgn



-L-  
 PI Sta 71+26.04  
 $\Delta = 0' 33' 15.9''$  (LT)  
 $D = 0' 16' 46.2''$   
 $L = 198.37'$   
 $T = 99.18'$   
 $R = 20,500.00'$   
 $RO = \text{SEE PLANS}$   
 $SE = \text{SEE PLANS}$

MATCHLINE SHEET 10  
 -L- STA. 66+00.00

MATCHLINE SHEET 12  
 -L- STA. 74+00.00



PROJECT REFERENCE NO. <b>R-5023B</b>	SHEET NO. <b>11</b>
RW SHEET NO.	
ROADWAY DESIGN ENGINEER <b>W. Craig Parker</b> SEAL 25474 NORTH CAROLINA PROFESSIONAL ENGINEER	HYDRAULICS ENGINEER <b>James A. Byrd</b> SEAL 15764 NORTH CAROLINA PROFESSIONAL ENGINEER
<b>HNTB</b> HNTB NORTH CAROLINA, P.C. 343 E. Six Forks Road, Suite 200 Raleigh, North Carolina 27609 NC License No: S-1554	
<b>DOCUMENT NOT CONSIDERED FINAL          UNLESS ALL SIGNATURES COMPLETED</b>	

**LEGEND**  
 ★ EXISTING SIGNAL TO BE MODIFIED

-Y3-  
 PI Sta 9+44.84  
 $D = 3' 32' 01.0''$  (LT)  
 $D = 1' 03' 25.6''$   
 $L = 334.27'$   
 $T = 167.19'$   
 $R = 5,420.00'$   
 $RO = \text{SEE PLANS}$   
 $SE = \text{SEE PLANS}$

SEE SHEET 20 FOR -L- PROFILE  
 SEE SHEET 21 FOR -Y3- PROFILE  
 SEE SHEET 21 FOR -Y4- PROFILE