

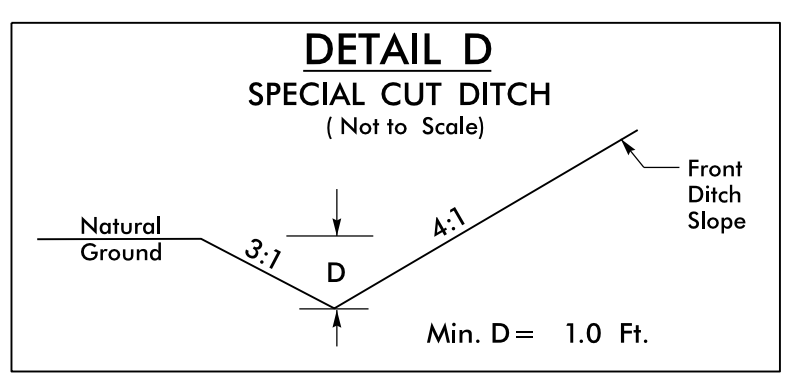
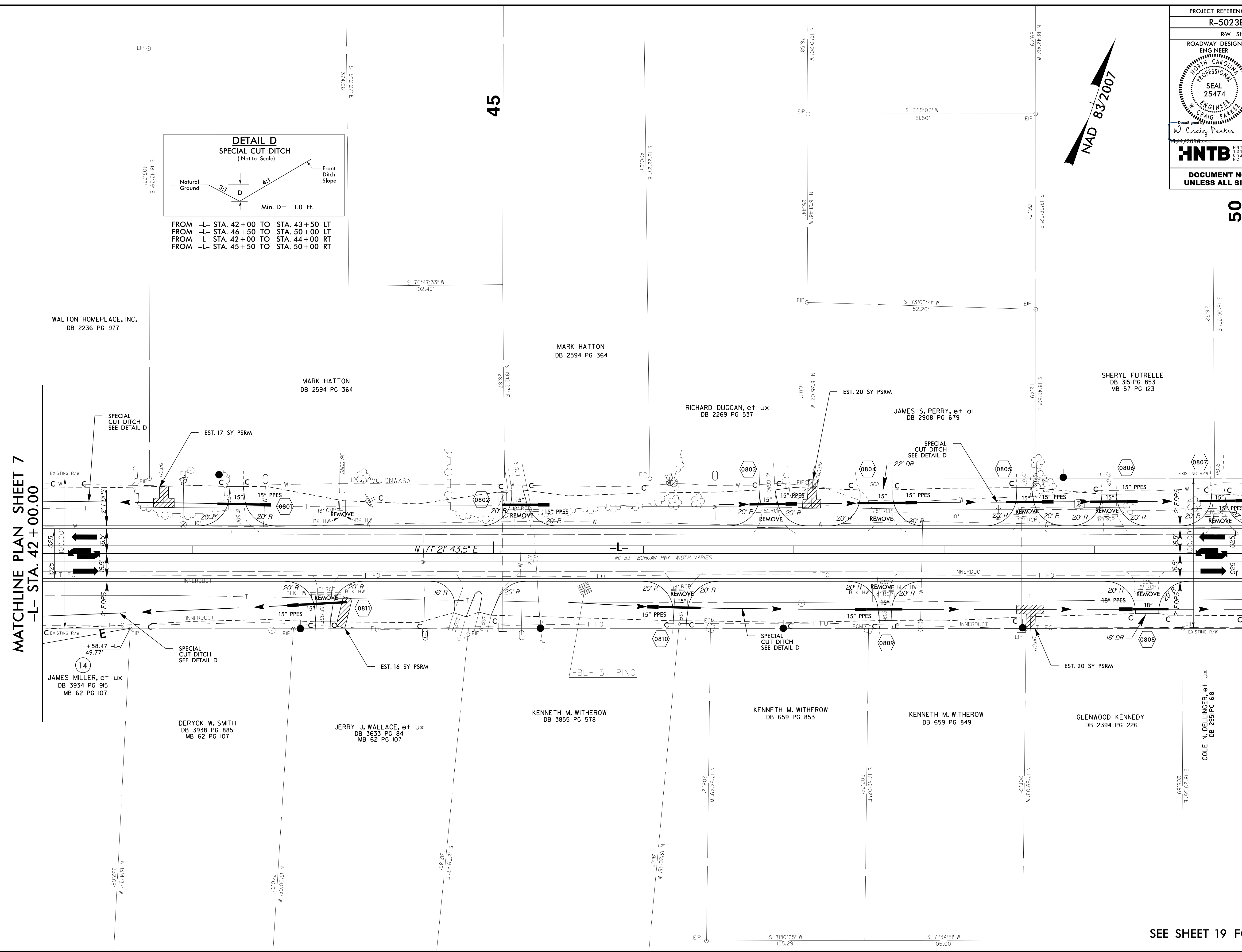
8/17/99

03-NOV-2016 12:02  
C:\Users\jstevens\Documents\49353\_Division 3 Environmental\Task Order 02 - NC 53\Roadway\Proj\RF5023BC-RDY\_PSH\_B.dgn

REVISIONS

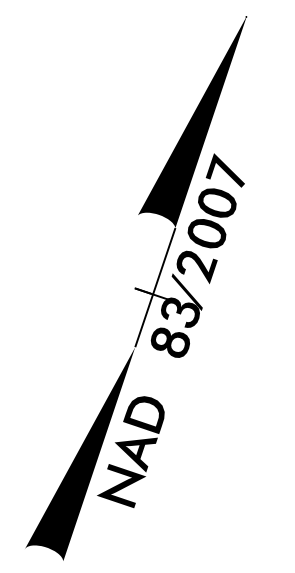
MATCHLINE PLAN SHEET 7  
-L- STA. 42 + 00.00

MATCHLINE PLAN SHEET 9  
-L- STA. 50 + 00.00



FROM -L- STA. 42 + 00 TO STA. 43 + 50 LT  
 FROM -L- STA. 46 + 50 TO STA. 50 + 00 LT  
 FROM -L- STA. 42 + 00 TO STA. 44 + 00 RT  
 FROM -L- STA. 45 + 50 TO STA. 50 + 00 RT

PROJECT REFERENCE NO. <b>R-5023B</b>	SHEET NO. <b>8</b>
RW SHEET NO.	
ROADWAY DESIGN ENGINEER <b>W. Craig Parker</b> NORTH CAROLINA PROFESSIONAL SEAL 25474	HYDRAULICS ENGINEER <b>James A. Byrd</b> NORTH CAROLINA PROFESSIONAL SEAL 15764
<p>11/27/2016</p> <p><b>HNTB</b> HNTB NORTH CAROLINA, P.C. 121 W. Trade St., Ste 8050 Charlotte, North Carolina 28202 NC License No. C-1554</p>	
DOCUMENT NOT CONSIDERED FINAL UNLESS ALL SIGNATURES COMPLETED	



45

50

SEE SHEET 19 FOR -L- PROFILE