

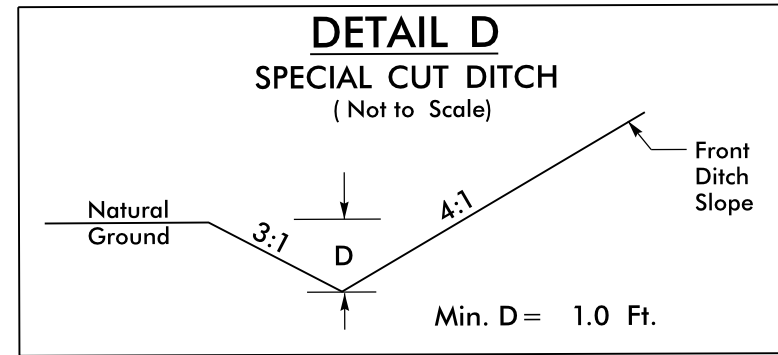
8/17/99

03-NOV-2016 12:01  
S:\Projects\2016\12\01\49353\Division 3 Environmental\Task Outsourcing\Task Order 02 - NC 53\Roadway\Pro\NF5023BC-RDY\_PSH\_7.dgn

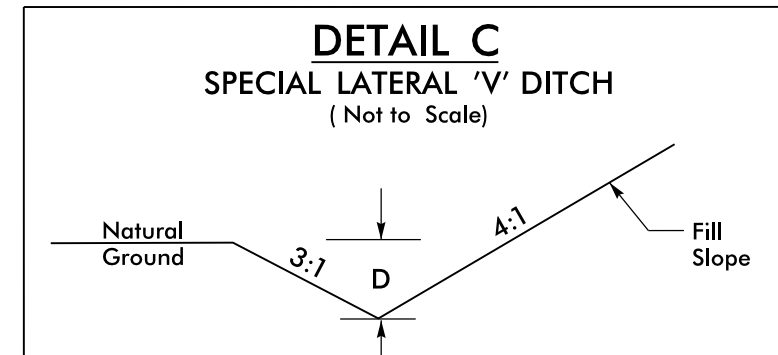
REVISIONS

MATCHLINE PLAN SHEET 6  
-L- STA. 34+00.00

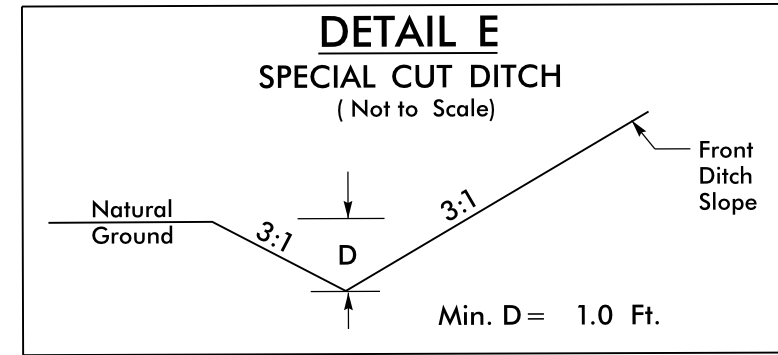
MATCHLINE PLAN SHEET 8  
-L- STA. 42+00.00



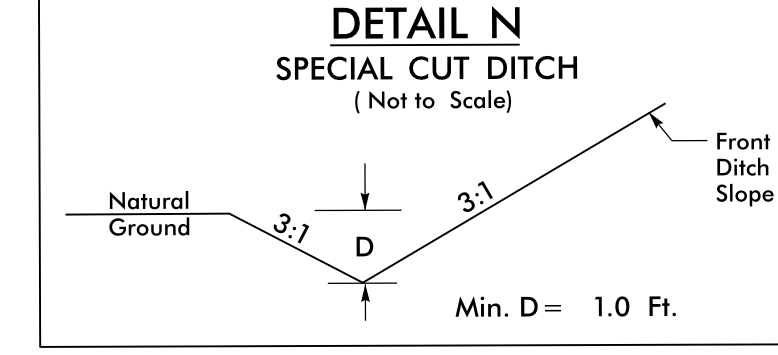
FROM -L- STA. 34+25 TO STA. 42+00 LT  
 FROM -L- STA. 35+25 TO STA. 40+00 RT  
 FROM -L- STA. 41+50 TO STA. 42+00 RT



FROM -L- STA. 34+00 TO STA. 35+25 RT



FROM -L- STA. 40+00 TO STA. 41+50 RT



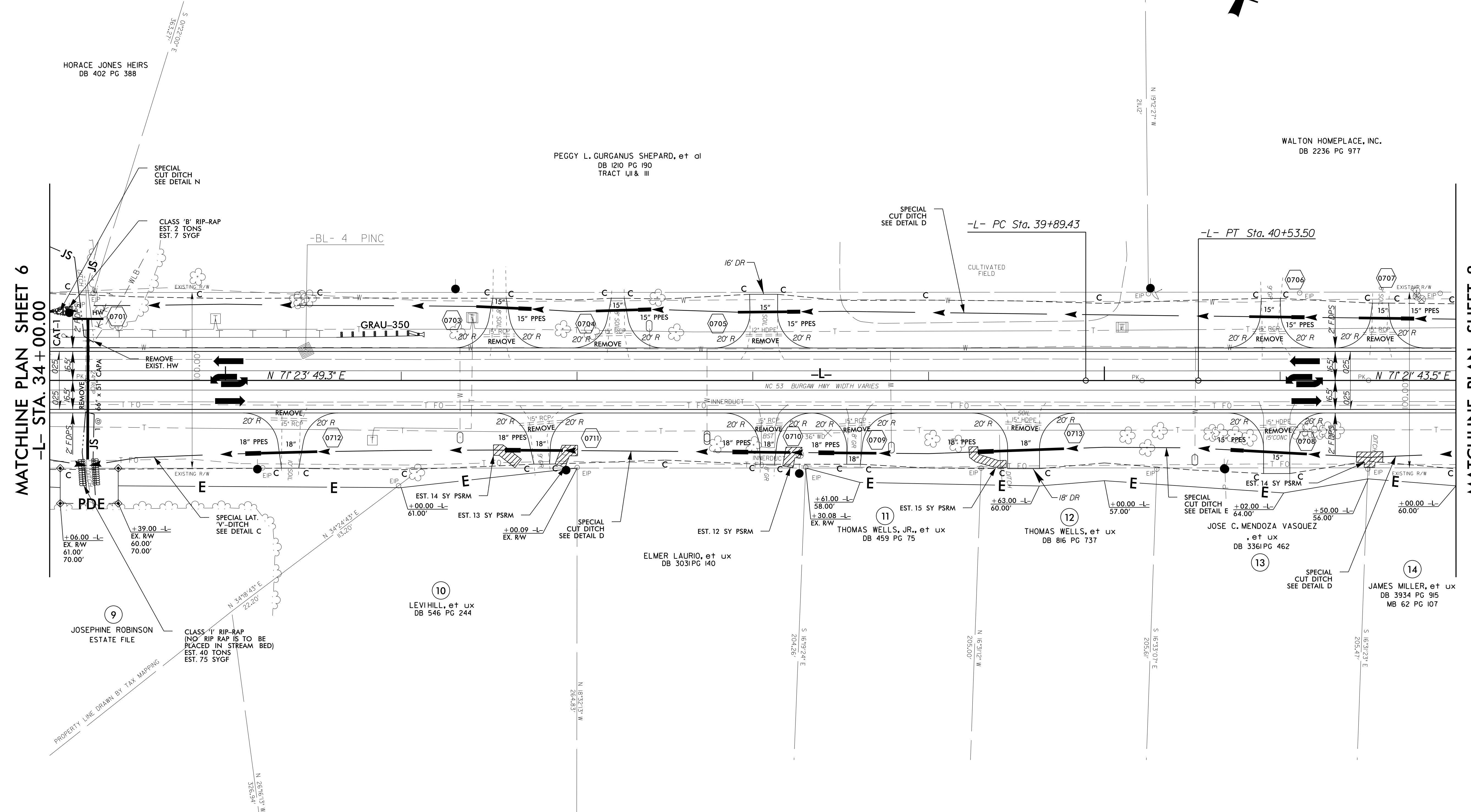
FROM -L- STA. 34+00 TO STA. 34+18 LT

-L-  
 PI Sta 40+21.47  
 $\Delta = 0^{\circ} 02' 05.9''$  (LT)  
 $D = 0^{\circ} 03' 16.4''$   
 $L = 64.07'$   
 $T = 32.03'$   
 $R = 105,000.00'$   
 RO = SEE PLANS  
 SE = SEE PLANS

40

NAD 83/2007

PROJECT REFERENCE NO. <b>R-5023B</b>		SHEET NO. <b>7</b>	
RW SHEET NO.		HYDRAULICS ENGINEER	
ROADWAY DESIGN ENGINEER		SEAL 15764	
<b>DOCUMENT NOT CONSIDERED FINAL UNLESS ALL SIGNATURES COMPLETED</b>			



SEE SHEET 18 AND 19 FOR -L- PROFILE