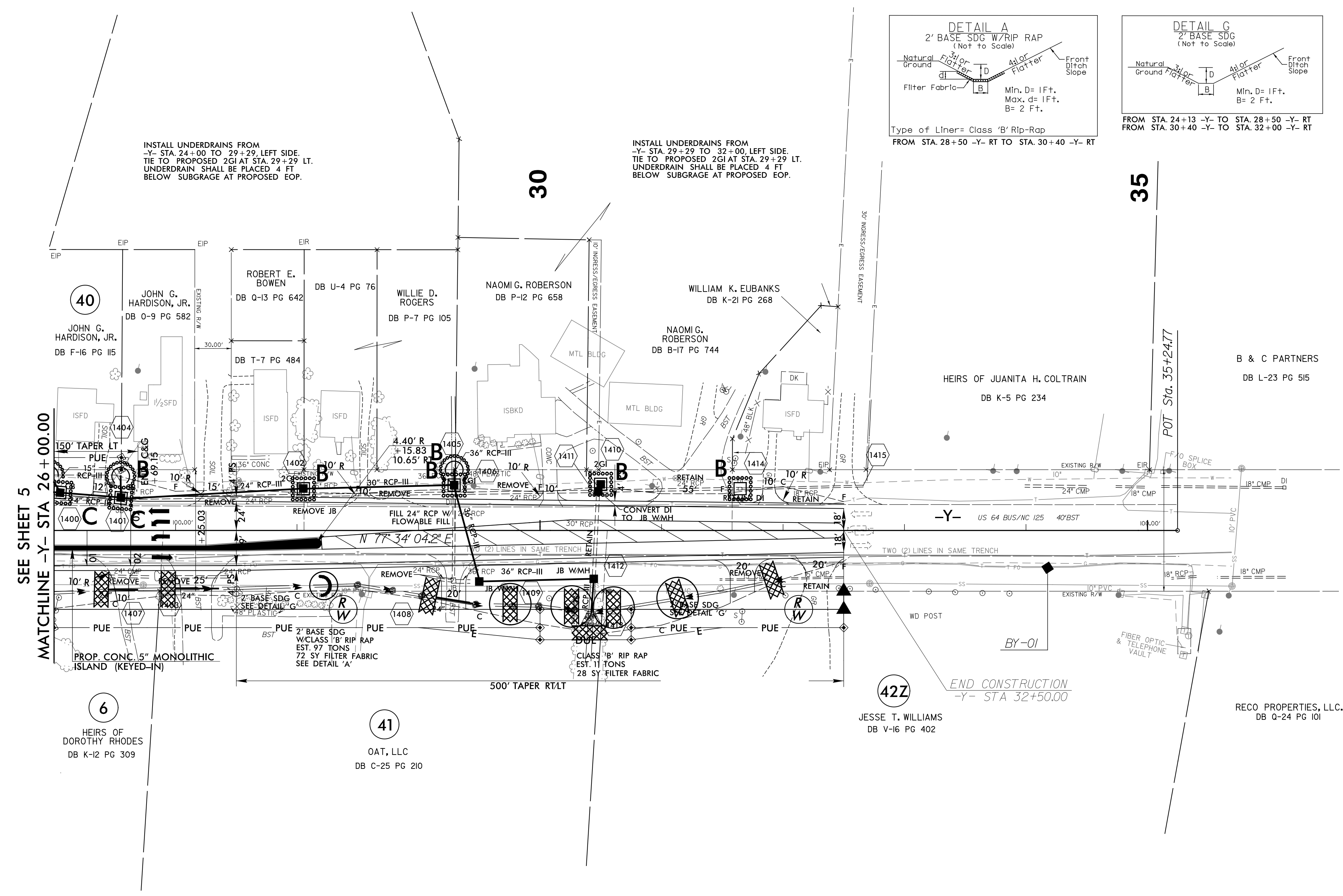
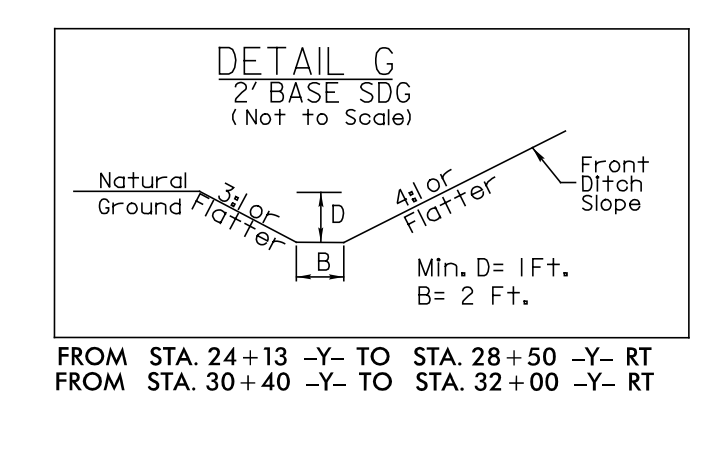
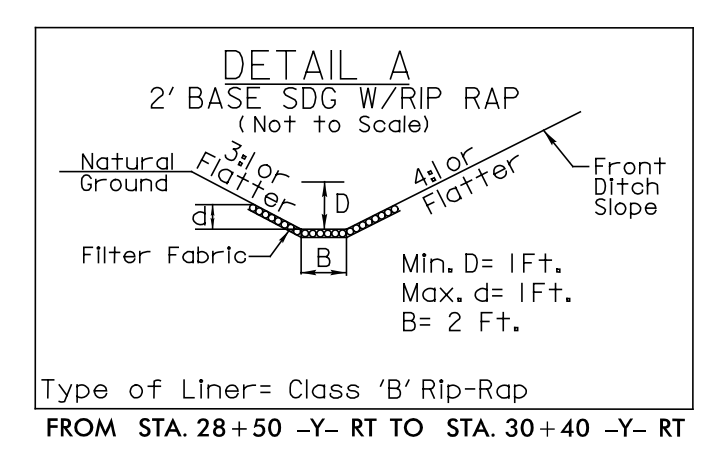
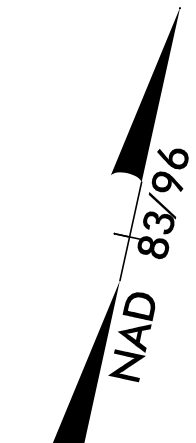


FINAL EROSION CONTROL FOR  
CONSTRUCTION SHEET 14



INSTALL UNDERDRAINS FROM  
-Y- STA. 24+00 TO 29+29, LEFT SIDE.  
TIE TO PROPOSED 2GI AT STA. 29+29 LT.  
UNDERDRAIN SHALL BE PLACED 4 FT  
BELOW SUBGRADE AT PROPOSED EOP.

INSTALL UNDERDRAINS FROM  
-Y- STA. 29+29 TO 32+00, LEFT SIDE.  
TIE TO PROPOSED 2GI AT STA. 29+29 LT.  
UNDERDRAIN SHALL BE PLACED 4 FT  
BELOW SUBGRADE AT PROPOSED EOP.

SEE SHEET 5  
MATCHLINE -Y- STA 26+00.00

42Z  
END CONSTRUCTION  
-Y- STA 32+50.00

NOTE:  
ALL EROSION CONTROL DEVICES SHOWN ARE LOCATED  
WITHIN EXISTING RW OR EASEMENT.

FOR -Y- PROFILE, SEE SHEET 21

5/14/99

R3826\_9/26/2016\_roadside\_erosion\_control\_final\_psh\_14.dgn  
ROADSIDE ENVIRONMENTAL PROJECT ENGINEERING, INC.