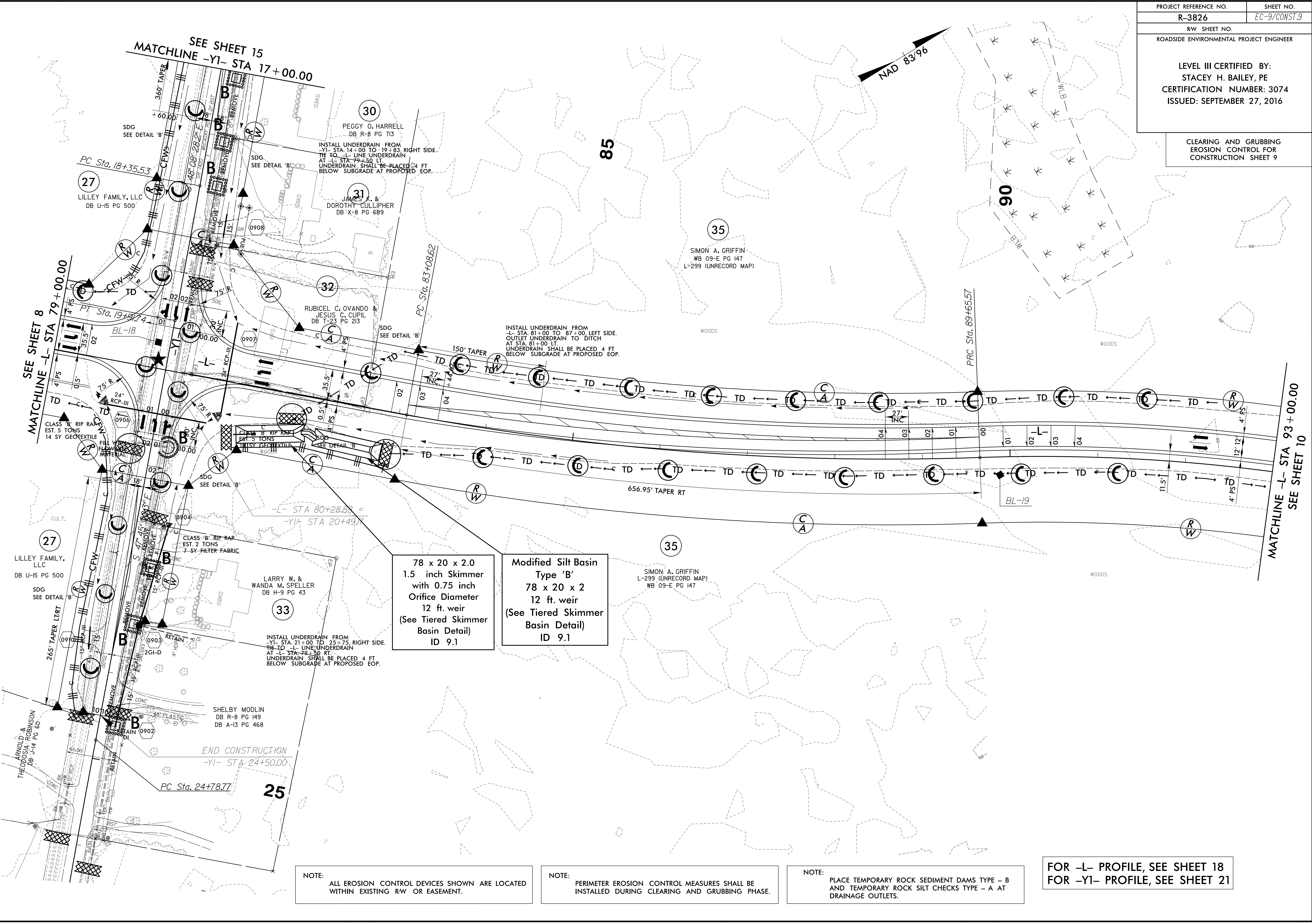


CLEARING AND GRUBBING
EROSION CONTROL FOR
CONSTRUCTION SHEET 9

5/14/99
9/26/2016
R3826.ec-9.const.9.dgn
ROADSIDE ENVIRONMENTAL PROJECT ENGINEERING, INC.



78 x 20 x 2.0
1.5 inch Skimmer
with 0.75 inch
Orifice Diameter
12 ft. weir
(See Tiered Skimmer
Basin Detail)
ID 9.1

Modified Silt Basin
Type 'B'
78 x 20 x 2
12 ft. weir
(See Tiered Skimmer
Basin Detail)
ID 9.1

NOTE: ALL EROSION CONTROL DEVICES SHOWN ARE LOCATED WITHIN EXISTING RW OR EASEMENT.

NOTE: PERIMETER EROSION CONTROL MEASURES SHALL BE INSTALLED DURING CLEARING AND GRUBBING PHASE.

NOTE: PLACE TEMPORARY ROCK SEDIMENT DAMS TYPE - B AND TEMPORARY ROCK SILT CHECKS TYPE - A AT DRAINAGE OUTLETS.

FOR -L- PROFILE, SEE SHEET 18
FOR -Y1- PROFILE, SEE SHEET 21