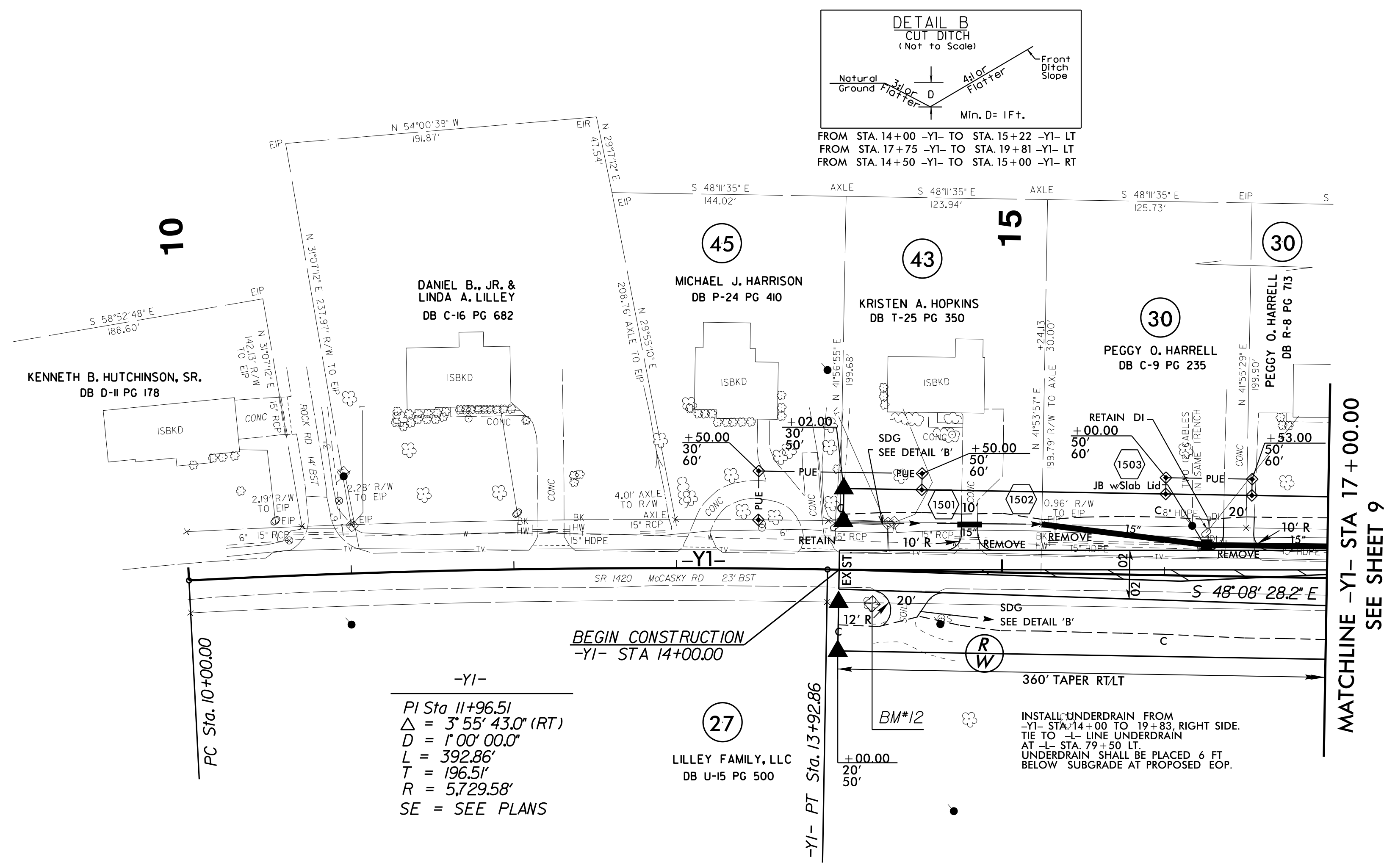
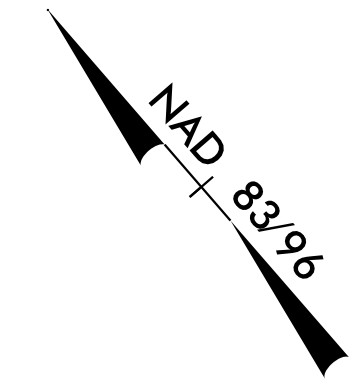


PROJECT REFERENCE NO.	SHEET NO.
R-3826	15
R/W SHEET NO.	
ROADWAY DESIGN ENGINEER	HYDRAULICS ENGINEER
<i>Gary Lovings</i>	<i>James R. Rice</i>
DOCUMENT NOT CONSIDERED FINAL UNLESS ALL SIGNATURES COMPLETED	



REVISIONS

5/14/99

22-NOV-2016 10:56 AM R:\3826_Rdy_psh_15.dgn

DRIVEWAY RADII ARE 15' UNLESS OTHERWISE NOTED. NOTED RADII ARE FOR BOTH SIDES.

FOR -YI- PROFILE, SEE SHEET 21