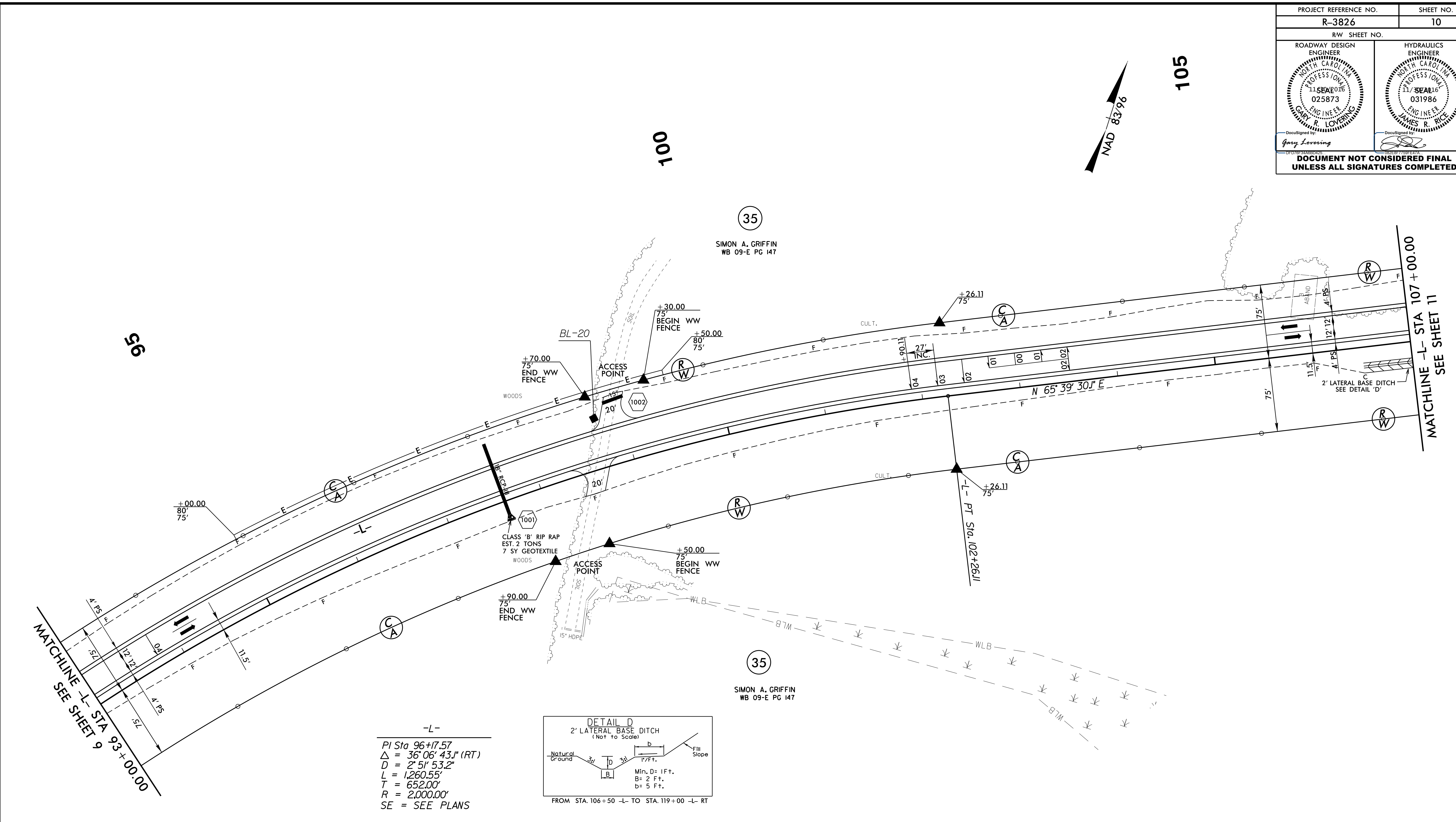
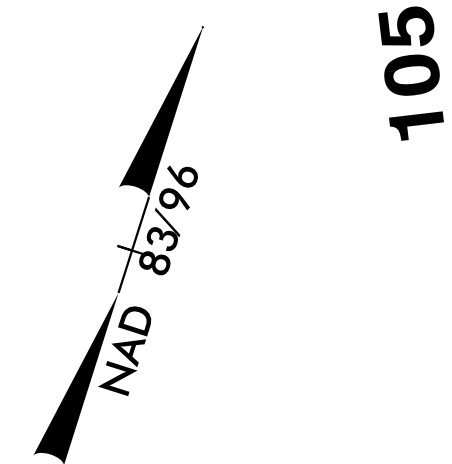


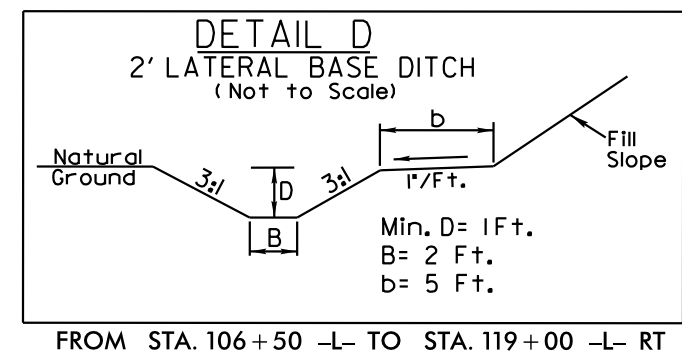
PROJECT REFERENCE NO. R-3826	SHEET NO. 10
R/W SHEET NO.	
ROADWAY DESIGN ENGINEER GARY R. LOVERING NORTH CAROLINA PROFESSIONAL ENGINEER 025873	HYDRAULICS ENGINEER JAMES R. RICHIE NORTH CAROLINA PROFESSIONAL ENGINEER 031986
Documented by: Gary Lovering Documented by: James R. Richie DOCUMENT NOT CONSIDERED FINAL UNLESS ALL SIGNATURES COMPLETED	



MATCHLINE -L- STA 93 + 00.00
SEE SHEET 9

MATCHLINE -L- STA 107 + 00.00
SEE SHEET 11

-L-
 PI Sta 96+17.57
 $\Delta = 36^{\circ} 06' 43.1''$ (RT)
 $D = 2^{\circ} 51' 53.2''$
 $L = 1,260.55'$
 $T = 652.00'$
 $R = 2,000.00'$
 SE = SEE PLANS



DRIVEWAY RADII ARE 15' UNLESS OTHERWISE NOTED. NOTED RADII ARE FOR BOTH SIDES.

FOR -L- PROFILE, SEE SHEET 19

REVISIONS

5/14/99

22-NOV-2016 10:55 R:\3826-Rdy-psh_10.dgn