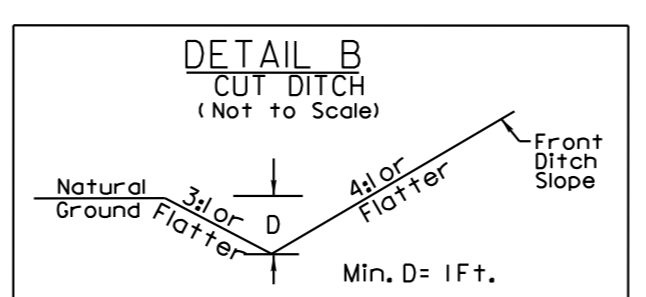
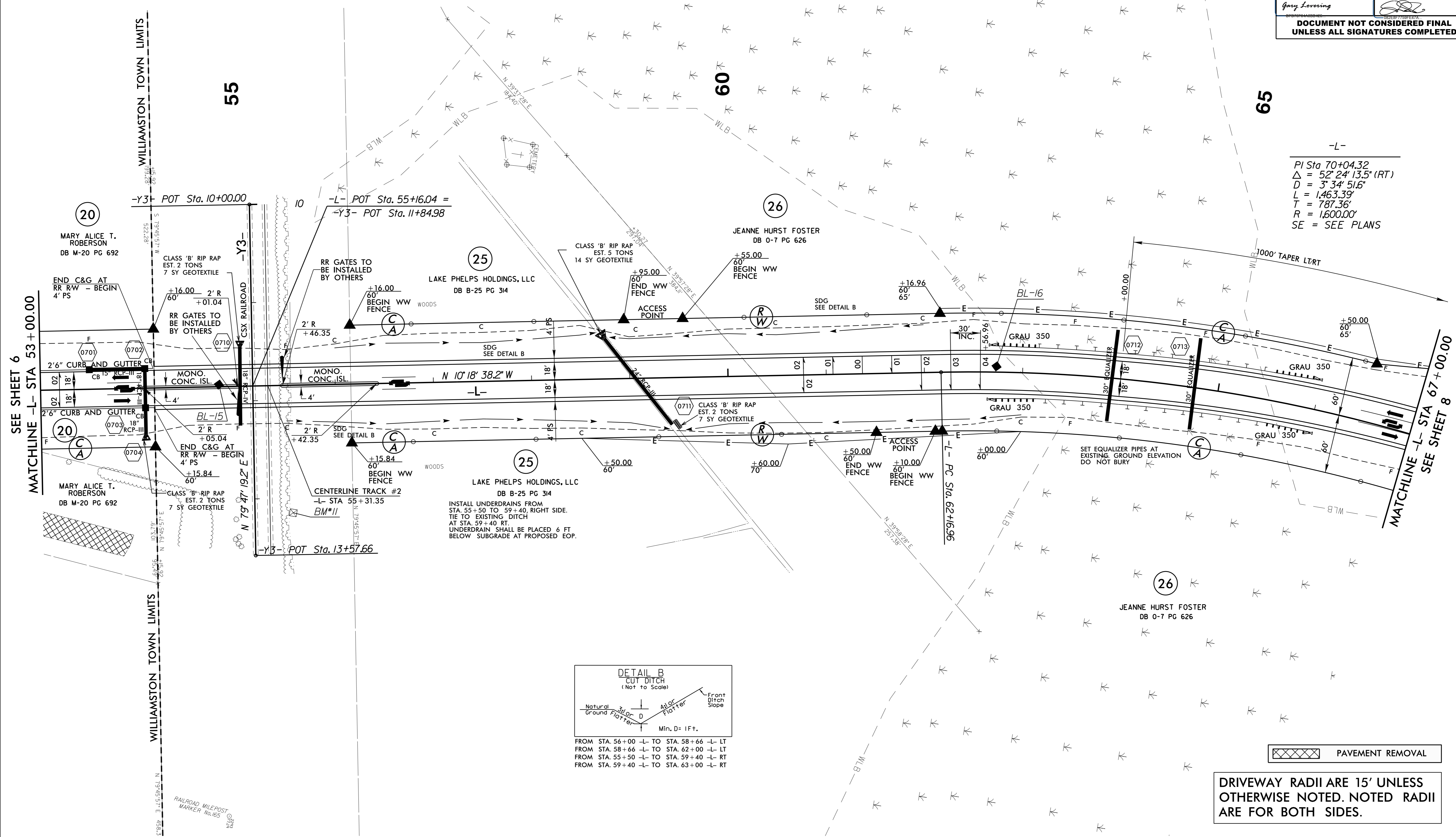


-L-
 PI Sta 70+04.32
 $\Delta = 52' 24" 13.5" (RT)$
 $D = 3' 34" 51.6"$
 $L = 1,463.39'$
 $T = 787.36'$
 $R = 1,600.00'$
 SE = SEE PLANS



FROM STA. 56+00 -L- TO STA. 58+66 -L- LT
 FROM STA. 58+66 -L- TO STA. 62+00 -L- LT
 FROM STA. 55+50 -L- TO STA. 59+40 -L- RT
 FROM STA. 59+40 -L- TO STA. 63+00 -L- RT

 PAVEMENT REMOVAL

DRIVEWAY RADII ARE 15' UNLESS OTHERWISE NOTED. NOTED RADII ARE FOR BOTH SIDES.

FOR -L- PROFILE, SEE SHEET 17

REVISIONS

5/14/99

22-NOV-2016 10:55 R3826.Rdy.psh.7.dgn