

**This electronic collection of documents is provided
for the convenience of the user
and is Not a Certified Document –**

**The documents contained herein were originally issued
and sealed by the individuals whose names and license
numbers appear on each page, on the dates appearing
with their signature on that page.**

**This file or an individual page
shall not be considered a certified document.**

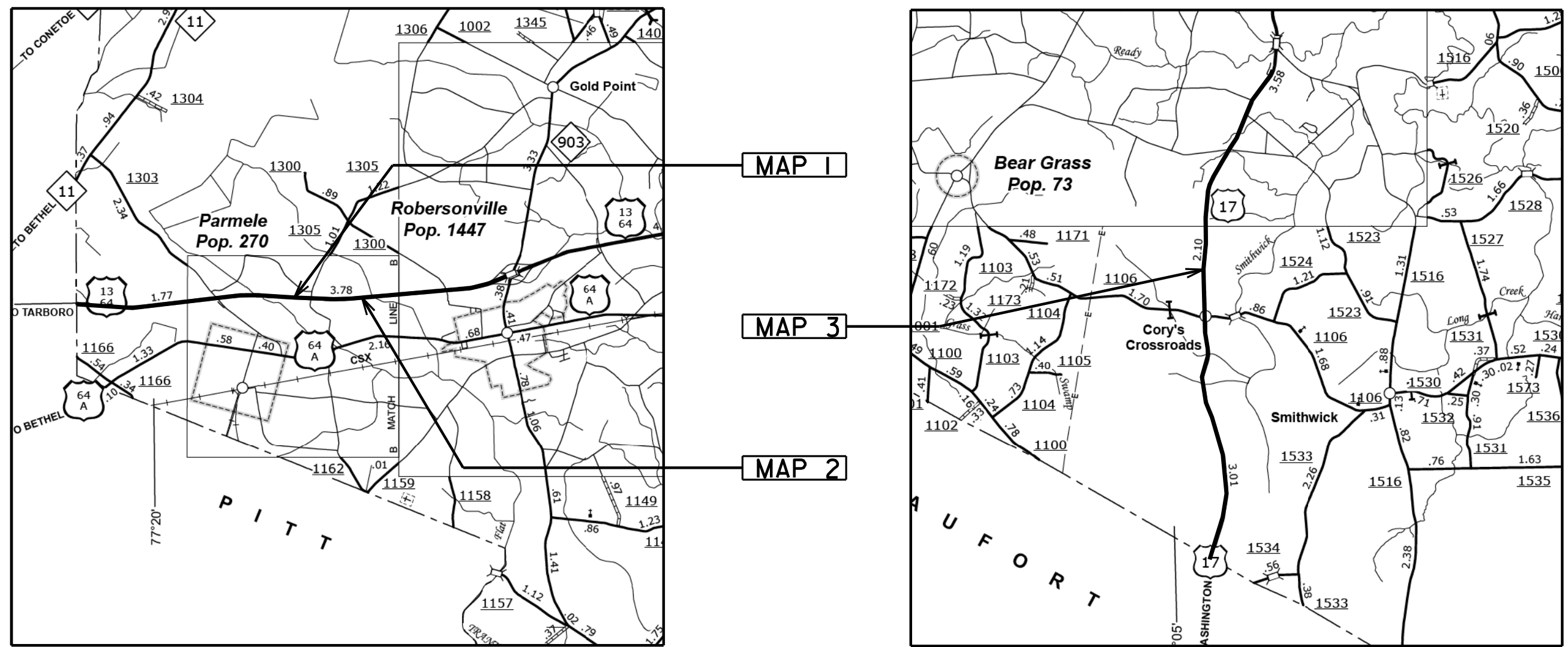
STATE	STATE PROJECT REFERENCE NO.	SHEET NO.
N.C.	2017CPT.01.11.10581.1, ETC.	1
STATE PROJ. NO.	F.A. PROJ. NO.	DESCRIPTION
2017CPT.01.11.10581.1		MAP 1
2017CPT.01.11.10581.2		MAP 2
2017CPT.01.11.10581.5		MAP 3

STATE OF NORTH CAROLINA
DIVISION OF HIGHWAYS

MARTIN COUNTY

LOCATION: MAP 1 US 13/US 64 WBL FROM NC 903 TO EDGECOMBE CO.
MAP 2 US 13/US 64 EBL FROM EDGECOMBE CO. TO NC 903
MAP 3 US 17 END 4 LANE SECTION TO BEAUFORT CO.

TYPE OF WORK: MILLING, RESURFACING, AND LONG-LIFE PAVEMENT MARKINGS



CONTRACT: C203964 WBS PROJECT: 2017CPT.01.11.10581.1, ETC.

NTS

PROJECT LENGTH

LENGTH OF ROADWAY PROJECT MAP 1 = 5.417 MI.
LENGTH OF ROADWAY PROJECT MAP 2 = 5.417 MI.
LENGTH OF ROADWAY PROJECT MAP 3 = 6.117 MI.

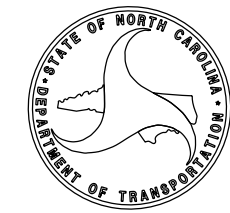
Prepared in the Office of:
DIVISION OF HIGHWAYS
113 Airport Dr., Edenton NC, 27932

2012 STANDARD SPECIFICATIONS

LETTING DATE:

W.B. HOBBS, P.E.
DIVISION PROJECT MANAGER

C.E. SLACHTA
DIVISION PROPOSALS ENGINEER



I7-NOV-2016 11:50 S:\Contracts\Resurfacing Projects\Division\Martin (January 2017)\map sheet 1.dgn

STATE	STATE PROJECT REFERENCE NO.	SHEET NO.
N.C.	2017CPT.01.11.10581.1, ETC.	2
STATE PROJ. NO.	F.A. PROJ. NO.	DESCRIPTION
2017CPT.01.11.10581.6		MAP 4
2017CPT.01.11.10581.7		MAP 5

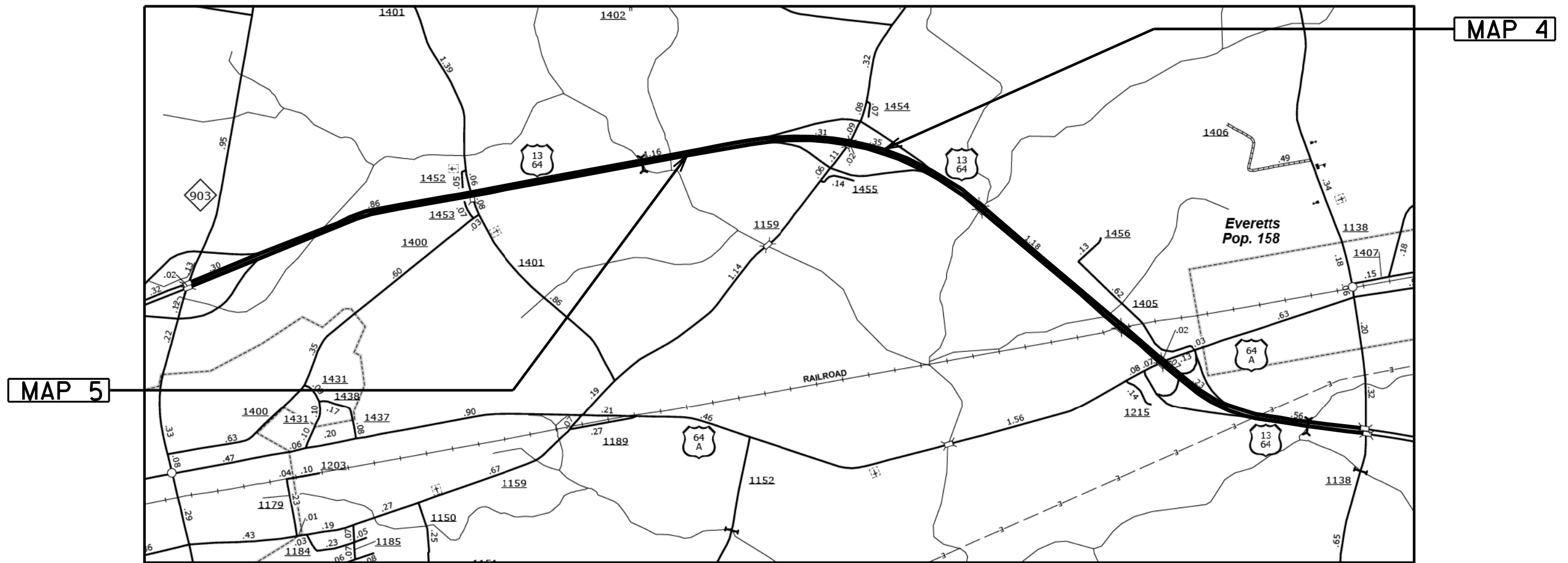
STATE OF NORTH CAROLINA
DIVISION OF HIGHWAYS

MARTIN COUNTY

LOCATION: MAP 4 US 13 WBL (US 64) - FROM SR 1138 OVERPASS TO NC 903

MAP 5 US 13 EBL (US 64) - FROM NC 903 TO SR 1138 OVERPASS

TYPE OF WORK: MILLING, RESURFACING, AND LONG-LIFE PAVEMENT MARKINGS



CONTRACT: C203964 WBS PROJECT: 2017CPT.01.11.10581.1, ETC.

NTS

PROJECT LENGTH

LENGTH OF ROADWAY PROJECT MAP 4 = 5.066 MI.
LENGTH OF ROADWAY PROJECT MAP 5 = 5.066 MI.

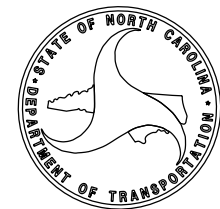
Prepared in the Office of:
DIVISION OF HIGHWAYS
113 Airport Dr., Edenton NC, 27932

2012 STANDARD SPECIFICATIONS

LETTING DATE:

W.B. HOBBS, P.E.
DIVISION PROJECT MANAGER

C.E. SLACHTA
DIVISION PROPOSALS ENGINEER



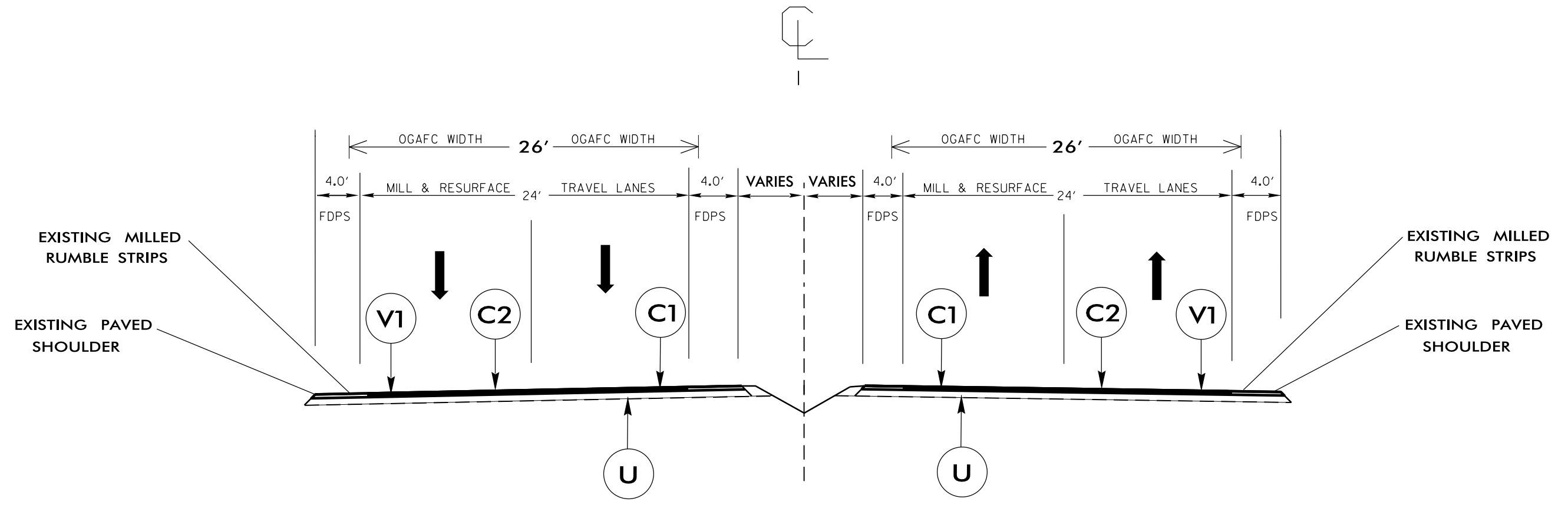
PAVEMENT SCHEDULE

C1	PROP. APPROX. 1.5" ASPHALT CONCRETE SURFACE COURSE, TYPE S9.5C, AT AN AVERAGE RATE OF 168 LBS. PER SQ. YD.
C2	PROP. APPROX. 0.75" OPEN GRADE ASPHALT FRICTION COURSE, TYPE FC-2 MODIFIED, AT AN AVERAGE RATE OF 90 LBS. PER SQ. YD.
V1	MILLING BITUMINOUS PAVEMENT. 1.5" IN DEPTH.
U	EXISTING PAVEMENT.

NOTES:

- *ALL PAVED S.R. ROADS OR RAMPS TO BE RESURFACED TO THE ENDS OF THE RADII, OR AS DIRECTED BY THE ENGINEER
- *EDGES, PAVEMENT WIDENING, INTERSECTIONS, AND BRIDGE FLARES ARE INCLUDED IN THE SUMMARY OF QUANTITIES
- *EXISTING PAVED SHOULDERS NOT TO BE MILLED
- *1 1/2" MILLING AND 1.5" OF S9.5B TO BE APPLIED IN TRAVEL LANES ONLY
- *EXISTING RAMPS TO BE OVERLAYED WITH 1.5" OF S9.5C
- *OPEN GRADE ASPHALT FRICTION COURSE TO BE APPLIED ± 26' WIDE OR ONE FOOT BEYOND TRAVEL LANES ON EACH SIDE OF TRAVELWAY
- *EXISTING MILLED RUMBLE STRIPS NOT TO BE DISTURBED
- *RAMPS DO NOT RECEIVE (OGAFC) APPLICATION. ADDITIONAL QUANTITIES ARE FOR EXTRA LANE WIDTHS ON THE MAIN LINE.

2nd Revision: 01/06/17 SPF



TYPICAL SECTION NO. 1

USE WITH MAPS 1-2, 4-5

NTS

DC-JAN-2017 15:31
 C:\Users\stfornw\OneDrive\Documents\Resurfacing2.dgn
 11/11/2016

P A V E M E N T S C H E D U L E

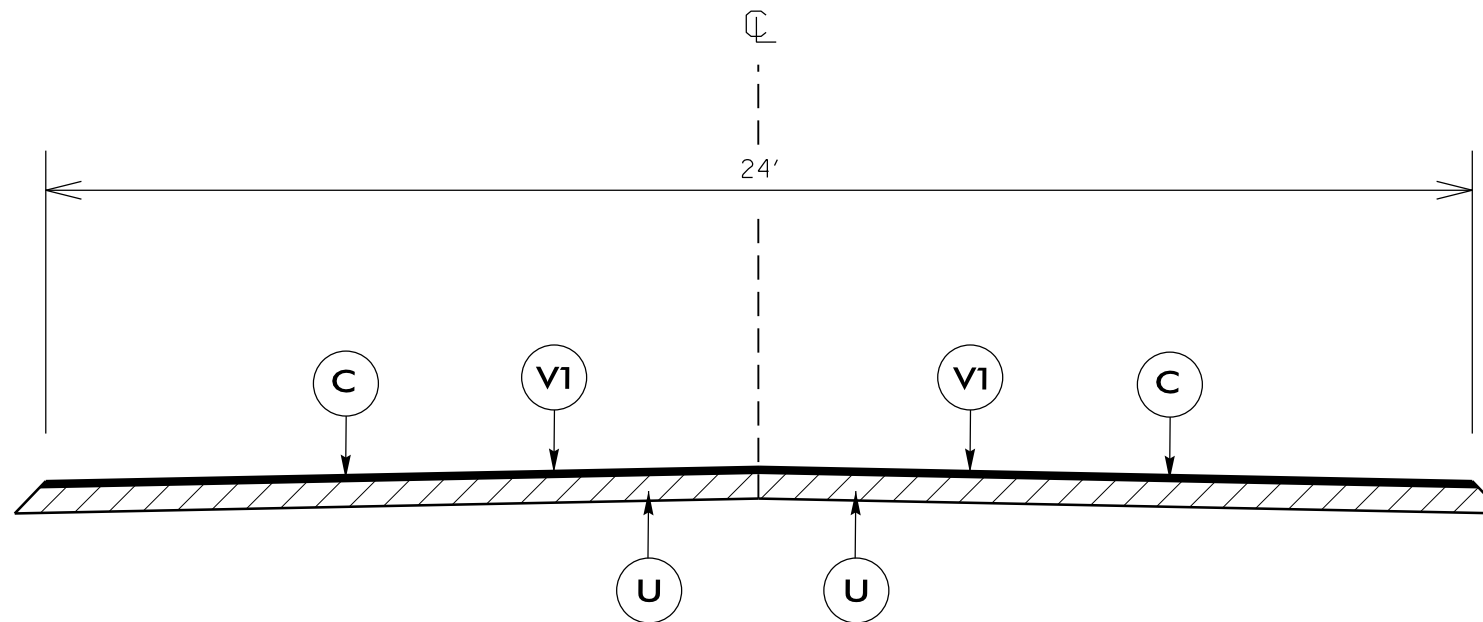
PROJECT REFERENCE NO.	SHEET NO.
2017CPT.01.11.10581.1, ETC.	4

C	PROP. APPROX. 1½" ASPHALT CONCRETE SURFACE COURSE, TYPE S9.5B, AT AN AVERAGE RATE OF 168 LBS. PER SQ. YD.
V1	MILLING BITUMINOUS PAVEMENT. 1½" DEPTH.
U	EXISTING PAVEMENT.

RESURFACING NOTES:

NOTE: PAVEMENT EDGE SLOPES ARE 1:1 UNLESS SHOWN OTHERWISE.

*ALL PAVED S.R. ROADS TO BE RESURFACED TO THE ENDS OF THE RADII., OR AS DIRECTED BY THE ENGINEER.



TYPICAL SECTION NO. 2

USE WITH MAP 3

NTS

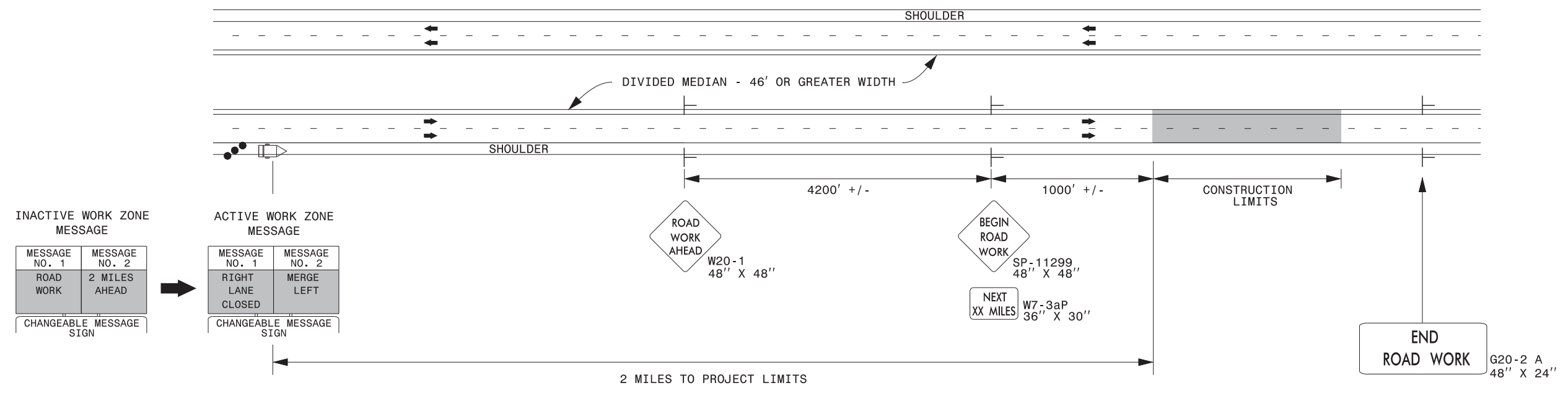
SUMMARY OF QUANTITIES

PROJECT NO	COUNTY	MAP NO	ROUTE	DESCRIPTION	TYP	LANES	LANE TYPE	FINAL SURFACE TESTING REQUIRED	WARM MIX ASPHALT REQUIRED	LENGTH MI	WIDTH FT	MOBILIZATION LS	1½" MILLING SY	SURFACE COURSE, S9.5B TONS	SURFACE COURSE, S9.5C TONS	ASP FOR PLANT MIX TONS	POLYM MOD ASP BNDR FOR PLT MIX GAL	OGAFC, TYPE FC-2 MOD TONS	WORK ZONE ADV/GEN WARN SIGN SF	TEMPORARY TRAFFIC CONTROL LS
2017CPT.01.11.10581.1	Martin	1	US 13 WBL (US 64)	FROM NC 903 TO EDGECOMBE CO.	1	2	MD	NO	NO	5.417	26	1	91,540		8,500	502	250	4,100	303	1
2017CPT.01.11.10581.2	Martin	2	US 13 EBL (US 64)	FROM EDGECOMBE CO. TO NC 903	1	2	MD	NO	NO	5.417	26	*	91,540		8,500	502	250	4,100	303	*
2017CPT.01.11.10581.5	Martin	3	US 17	FROM END OF 4 LANE TO BEAUFORT CL	2	2	2WU	NO	NO	6.117	24	*	89,500	7,900		474			126	*
2017CPT.01.11.10581.6	Martin	4	US 13 WBL (US 64)	FROM SR 1138 OVERPASS TO NC 903	1	2	MD	NO	NO	5.066	26	*	108,000		10,000	590	281	4,600	303	*
2017CPT.01.11.10581.7	Martin	5	US 13 EBL (US 64)	FROM NC 903 TO SR 1138 OVERPASS	1	2	MD	NO	NO	5.066	26	*	115,000		10,600	625	281	4,600	303	*
GRAND TOTAL										27.083		1	495,580	7,900	37,600	2,693	1,062	17,400	1,338	1

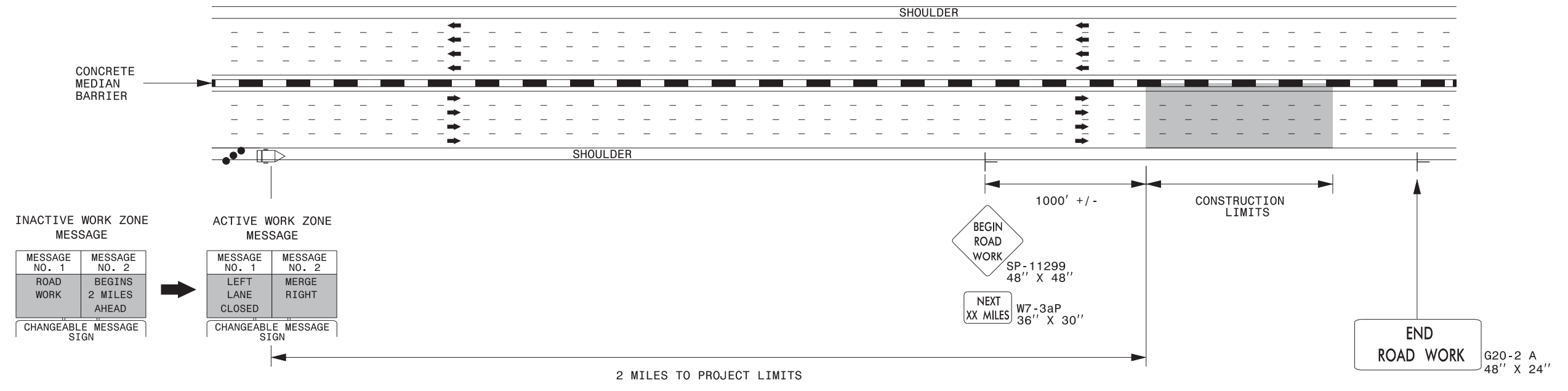
THERMOPLASTIC AND PAINT QUANTITIES

PROJECT NO	COUNTY	MAP NO	ROUTE	DESCRIPTION	TYP	LANES	LANE TYPE	LENGTH	WIDTH	4" X 90 M WHITE THERMO LF	4" X 120 M YELLOW THERMO LF	6" X 90 M WHITE THERMO LF	6" X 90 M YELLOW THERMO LF	6" X 120 M WHITE THERMO LF	THERMO PVT MKG LINES 8"90 MILS (WHITE) LF	12" X 90 M WHITE THERMO LF	THERM PVT SYM 90MIL (MERGE ARROW) EA	4" WHITE PAINT LF	4" YELLOW PAINT LF	PAINT PVT MKG SYM (MERGE ARROW) EA	PERM RAISE PVT MKRS (CRYSTAL & RED) EA	PERM RAISE PVT MKRS (YELLOW) EA
2017CPT.01.11.10581.1	Martin	1	US 13 WBL (US 64)	FROM NC 903 TO EDGECOMBE CO.	1	2	MD	5.417	29			29,000	29,000	7,150		1,100	3	37,300	29,000	3	400	
										58,000						66,300				400		
2017CPT.01.11.10581.2	Martin	2	US 13 EBL (US 64)	FROM EDGECOMBE CO. TO NC 903	1	2	MD	5.417	29			29,000	29,000	7,150	37	1,100		37,300	29,000		400	
										58,000						66,300				400		
2017CPT.01.11.10581.5	Martin	3	US 17	FROM END OF 4 LANE TO BEAUFORT CL	2	2	2WU	6.117	24	66,000	40,372							66,000	40,372			405
																106,372				405		
2017CPT.01.11.10581.6	Martin	4	US 13 WBL (US 64)	FROM SR 1138 OVERPASS TO NC 903	1	2	MD	5.066	25			26,800	26,800	6,700	111	4,000	6	37,620	26,800	6	475	
										53,600						64,420				475		
2017CPT.01.11.10581.7	Martin	5	US 13 EBL (US 64)	FROM NC 903 TO SR 1138 OVERPASS	1	2	MD	5.066	25			26,800	26,800	6,700	74	4,000	9	37,620	26,800	9	475	
										53,600						64,420				475		
GRAND TOTAL								27.083		66,000	40,372	111,600	111,600	27,700	222	10,200	18	215,840	151,972	18	1,750	405
												223,200				367,812				2,155		

DIVIDED MEDIANS WITH WIDTHS 46' OR GREATER



DIVIDED MEDIANS WITH WIDTHS LESS THAN 46' OR WITH PERMANENT MEDIAN BARRIER

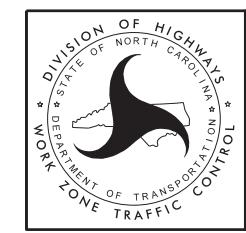


NOTES:

- 1) LATERAL CLEARANCE AT ALL SIGN LOCATIONS SHALL BE 6' AS MEASURED FROM THE EDGE OF PAVEMENT.
- 2) MOUNT SIGNS THAT ARE LARGER THAN 10 SQUARE FEET IN AREA ON TWO OR MORE WOOD OR U-CHANNEL SUPPORTS. PERFORATED SQUARE TUBING SUPPORT SYSTEMS MAY SUPPORT LARGER AREAS ON A SINGLE SUPPORT. FOLLOW MANUFACTURER'S RECOMMENDATIONS. THESE SYSTEMS SHALL BE NCHRP 350 COMPLIANT AND NCDOT APPROVED.
- 3) FOR MEDIAN WIDTHS LESS THAN 46' (MEASURED EDGELINE TO EDGELINE) USE THE BOTTOM DRAWING.
- 4) IF STATIONARY GENERAL WARNING SIGNS ARE USED, THEY WILL BE PAID FOR PER SECTION 104 OF THE NCDOT STANDARD SPECIFICATIONS AS EXTRA WORK.
- 5) INSTALL "ROAD WORK AHEAD" (W20-1) ALONG ENTRANCE RAMP 500' PRIOR TO RAMP TERMINAL, AND "END ROAD WORK" (G20-2a) AT THE END OF EXIT RAMP WITHIN THE WORK ZONE.
- 6) IF MILLED AREAS ARE NOT PAVED BACK BY THE END OF THE WORK DAY, PORTABLE SIGNS SHALL BE USED TO WARN DRIVERS OF THE PRESENT CONDITIONS. THESE ARE TO INCLUDE, BUT NOT LIMITED TO "ROUGH ROAD" W8-8, "UNEVEN LANES" W8-11, "GROOVED PAVEMENT" W8-15 w/MOTORCYCLE PLAQUE MOUNTED BELOW. THESE ARE TO BE DOUBLE INDICATED ON MULTI-LANE ROADWAYS WITH SPEED LIMITS 45 MPH AND GREATER AND WITH DIVIDED MEDIANS OF 46' OR GREATER. THESE PORTABLE SIGNS ARE INCIDENTAL TO THE OTHER ITEMS OF WORK INCLUDED IN THE TEMPORARY TRAFFIC CONTROL (LUMP SUM) PAY ITEM.

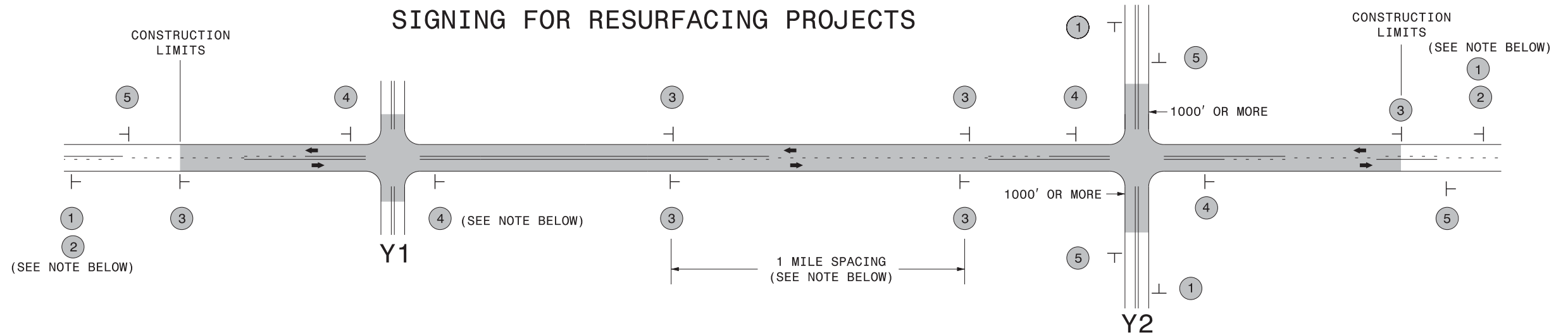
LEGEND

- CHANGEABLE MESSAGE SIGN (CMS)
- STATIONARY SIGN
- DIRECTION OF TRAFFIC FLOW
- TRAFFIC DRUM



**RESURFACING ADVANCE
WARNING SIGNS FOR
HIGH SPEED FACILITIES
≥ 60 MPH**

SIGNING FOR RESURFACING PROJECTS



LEGEND	
┆	STATIONARY SIGN
←	DIRECTION OF TRAFFIC FLOW

MAINLINE (-L-) SIGNING

-Y- LINE SIGNING

SIGNING NOTES AND PLACEMENT PER DIRECTION	MAINLINE (-L-) SIGNING		-Y- LINE SIGNING	
	1	 W20-1 48" X 48"	PLACE 1000' PRIOR TO BEGINNING OF CONSTRUCTION LIMITS. ONLY USED ON -Y- LINES IF RESURFACING LIMITS EXTEND 1000' ALONG -Y- LINE.	<p>NO REQUIRED STATIONARY SIGNING FOR THE FOLLOWING -Y- LINE CONDITIONS:</p> <ol style="list-style-type: none"> 1) LESS THAN 1000' OF RESURFACING ALONG -Y- LINE 2) SUBDIVISION ROADS 3) DEAD END ROADS <p>WHEN PAVING/CONSTRUCTION ACTIVITIES PROCEED ACROSS AN UNSIGNED -Y- LINE, ADVANCE WARNING PORTABLE SIGNS SHALL BE USED ALONG THE -Y- LINE AS SHOWN BELOW. REMOVE UPON COMPLETION OF WORK.</p> <div style="display: flex; justify-content: space-around;"> <div style="text-align: center;"> W20-1 48" X 48" </div> <div style="text-align: center;"> W20-7 A 48" X 48" </div> </div> <p>PLACED 500' IN ADVANCE OF FLAGGER. PLACED 250' IN ADVANCE OF FLAGGER.</p>
	2	 W7-3aP 24" X 18"	#2 SIGN ONLY USED WHEN RESURFACING LIMITS ARE 2 OR MORE MILES IN LENGTH. ROUND UP TO NEXT WHOLE NUMBER. (NO FRACTIONAL OR DECIMAL NUMBERS)	
	3	 SP 13107 48" X 48"	PLACE INITIALLY AT THE CONSTRUCTION LIMITS AND SPACED 1 MILE APART THEREAFTER. IF NO -Y- LINES EXIST, PLACE 2ND SET 1/2 MILE FROM THE CONSTRUCTION LIMITS AND THEN SPACE 1 MILE THEREAFTER.	
	4	 SP 13106 48" X 48"	THESE ARE FOR -Y- LINES THAT ARE "THROUGH" ROADWAYS. DEAD END AND SUBDIVISION ROADS ARE NOT "THROUGH" ROADWAYS. INSTALL 500' +/- FROM EACH -Y- LINE APPROACH AS SHOWN ABOVE. FOR MULTIPLE -Y- LINES THAT ARE SEPARATED BY 0.25 MILES OR LESS, TREAT AS A SINGLE UNIT AND INSTALL WITHIN 500' OF EACH APPROACH. A MAXIMUM OF 2 SIGN SETS PER MILE. DO NOT INSTALL WHEN -Y- LINES ARE WITHIN 0.5 MILES FROM "END ROAD WORK" SIGN.	
5	 G20-2 A 48" X 24"	PLACE 500' FOLLOWING THE END OF CONSTRUCTION LIMITS.		

