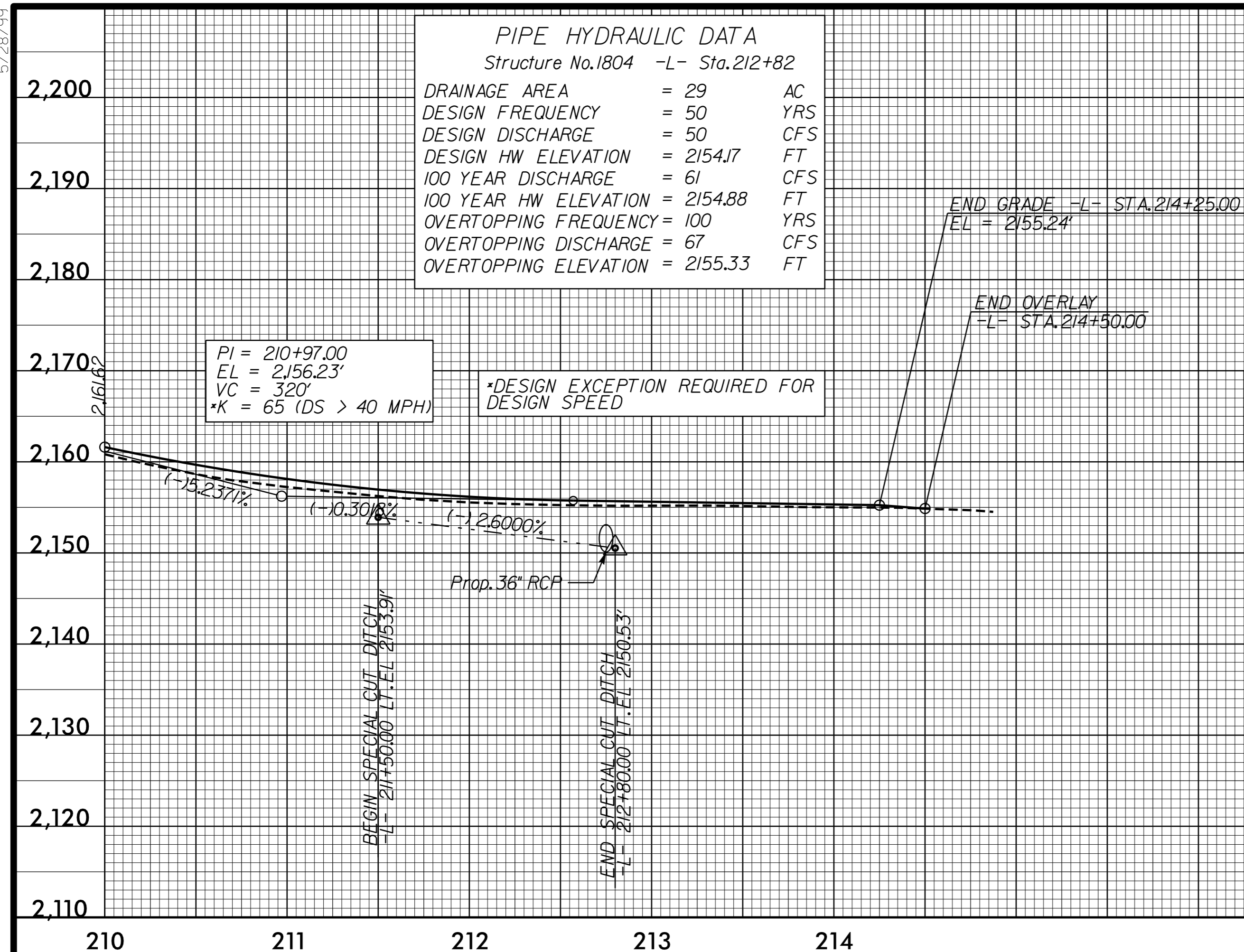


PROJECT REFERENCE NO. R-4753	SHEET NO. 26
ROADWAY DESIGN ENGINEER DAVID J. CLODD 035683	HYDRAULICS ENGINEER STEPHEN R. MORGAN 022100

**DOCUMENT NOT CONSIDERED FINAL
UNLESS ALL SIGNATURES COMPLETED**

PIPE HYDRAULIC DATA
Structure No.1804 -L- Sta.212+82

DRAINAGE AREA	= 29	AC
DESIGN FREQUENCY	= 50	YRS
DESIGN DISCHARGE	= 50	CFS
DESIGN HW ELEVATION	= 2154.17	FT
100 YEAR DISCHARGE	= 61	CFS
100 YEAR HW ELEVATION	= 2154.88	FT
OVERTOPPING FREQUENCY	= 100	YRS
OVERTOPPING DISCHARGE	= 67	CFS
OVERTOPPING ELEVATION	= 2155.33	FT



PI = 210+97.00
EL = 2156.23'
VC = 320'
*K = 65 (DS > 40 MPH)

*DESIGN EXCEPTION REQUIRED FOR
DESIGN SPEED

BMI2 ELEVATION = 2158.03
N 578166 E 769860
BL STATION 223+31.37
S 01°15'59.0" W DIST 294.46
BRASS DISK SET ON NE END OF CONC. RAIL
ON BRIDGE

DITCH LEGEND

LEFT DITCH - - - - -

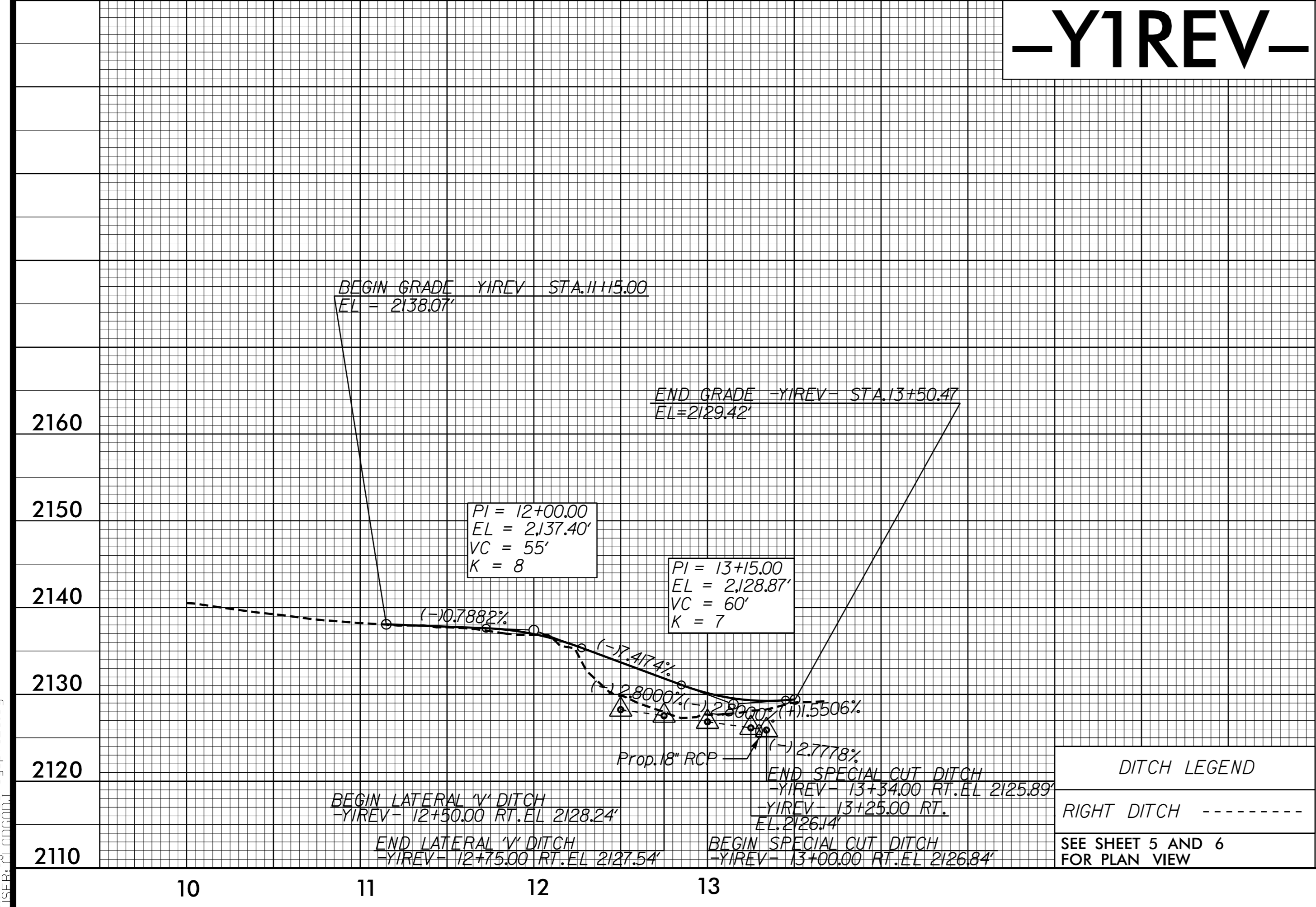
SEE SHEET 18 FOR PLAN VIEW

-Y1REV-

PIPE HYDRAULIC DATA
-Y2- Sta 11+32

DRAINAGE AREA	= 3.7	AC
DESIGN FREQUENCY	= 50	YRS
DESIGN DISCHARGE	= 7.7	CFS
DESIGN HW ELEVATION	= 2128.51	FT
100 YEAR DISCHARGE	= 8.4	CFS
100 YEAR HW ELEVATION	= 2128.65	FT
OVERTOPPING FREQUENCY	= 100+	YRS
OVERTOPPING DISCHARGE	= 12.9	CFS
OVERTOPPING ELEVATION	= 2130.35	FT

-Y2-



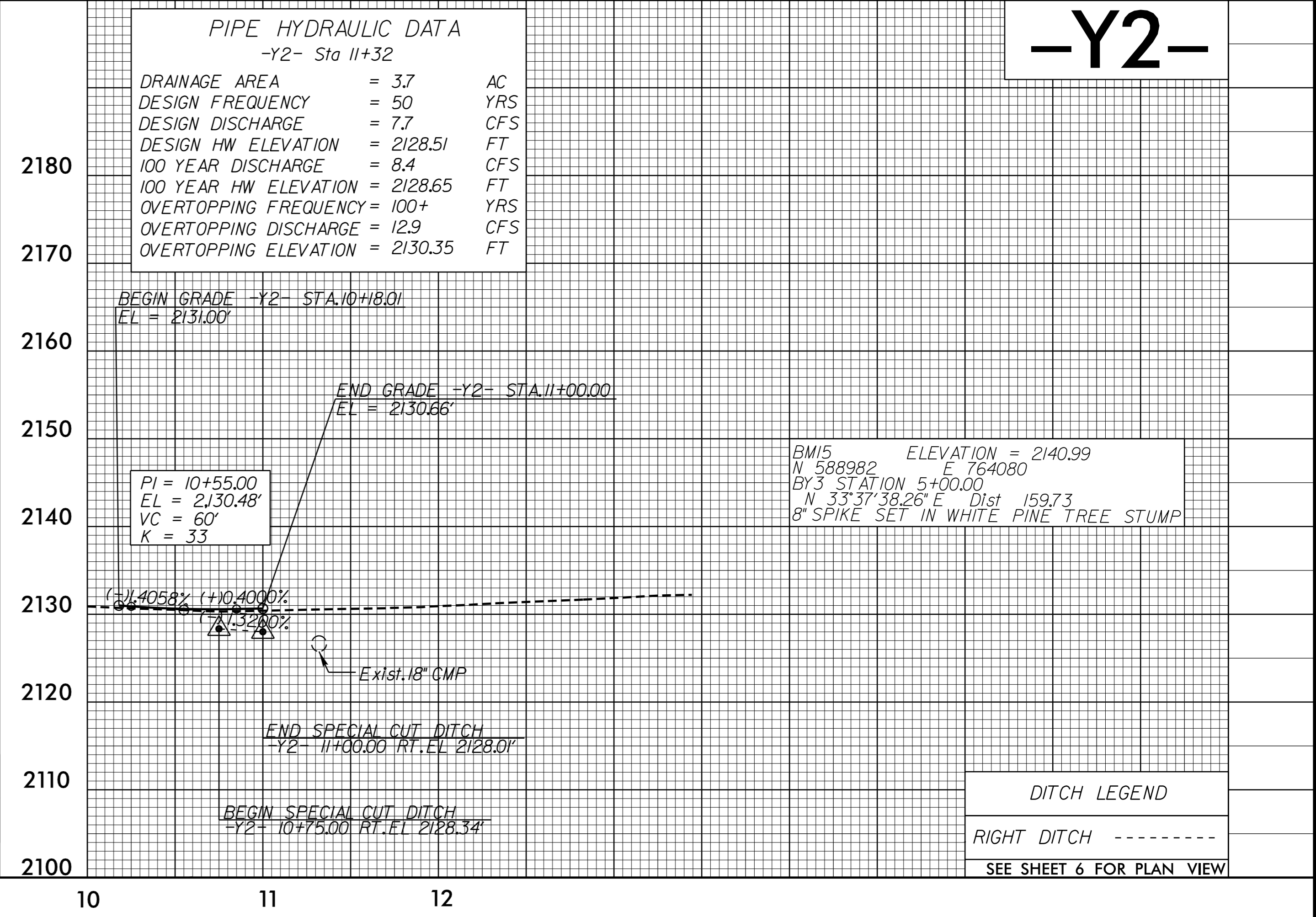
PI = 12+00.00
EL = 2137.40'
VC = 55'
K = 8

PI = 13+15.00
EL = 2128.87'
VC = 60'
K = 7

DITCH LEGEND

RIGHT DITCH - - - - -

SEE SHEET 5 AND 6
FOR PLAN VIEW



PI = 10+55.00
EL = 2130.48'
VC = 60'
K = 33

BMI5 ELEVATION = 2140.99
N 588982 E 764080
BY3 STATION 5+00.00
N 33°37'38.26" E Dist 159.73
8" SPIKE SET IN WHITE PINE TREE STUMP

DITCH LEGEND

RIGHT DITCH - - - - -

SEE SHEET 6 FOR PLAN VIEW

Invgldt_expression
H:\SE\CA\PROJECTS\126\126.dgn