

5/28/99



PROJECT REFERENCE NO. R-4753	SHEET NO. 22
ROADWAY DESIGN ENGINEER DAVID J. CLADGE, PE	HYDRAULICS ENGINEER STEPHEN R. MORGAN, PE
DOCUMENT NOT CONSIDERED FINAL UNLESS ALL SIGNATURES COMPLETED	

PIPE HYDRAULIC DATA
Structure No.1003 -L- Sta.100+58

DRAINAGE AREA	= 6.3	AC
DESIGN FREQUENCY	= 50	YRS
DESIGN DISCHARGE	= 13	CFS
DESIGN HW ELEVATION	= 2133.05	FT
100 YEAR DISCHARGE	= 14	CFS
100 YEAR HW ELEVATION	= 2133.19	FT
OVERTOPPING FREQUENCY	= 100+	YRS
OVERTOPPING DISCHARGE	= 24	CFS
OVERTOPPING ELEVATION	= 2135.11	FT

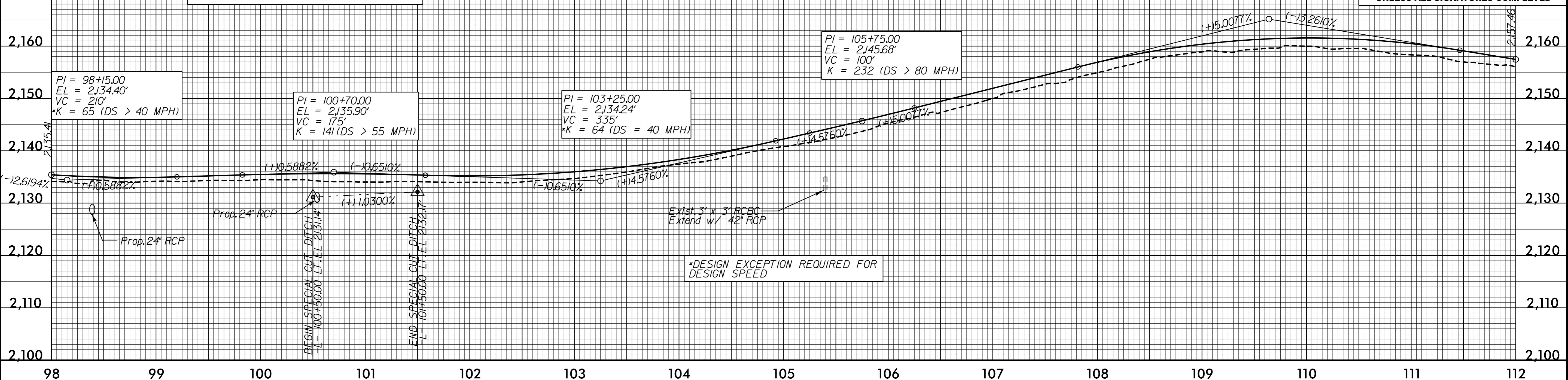
PIPE HYDRAULIC DATA
EXIST. 3' X 3' -L- Sta.105+40

DRAINAGE AREA	= 31	AC
DESIGN FREQUENCY	= 50	YRS
DESIGN DISCHARGE	= 37	CFS
DESIGN HW ELEVATION	= 2140.0	FT
100 YEAR DISCHARGE	= 44.8	CFS
100 YEAR HW ELEVATION	= 2140.3	FT
OVERTOPPING FREQUENCY	= 500+	YRS
OVERTOPPING DISCHARGE	= 96	CFS
OVERTOPPING ELEVATION	= 2144.1	FT

PIPE HYDRAULIC DATA
Structure No.1004 -L- Sta.105+40

DRAINAGE AREA	= 31	AC
DESIGN FREQUENCY	= 50	YRS
DESIGN DISCHARGE	= 37	CFS
DESIGN HW ELEVATION	= 2136.93	FT
100 YEAR DISCHARGE	= 45	CFS
100 YEAR HW ELEVATION	= 2137.26	FT
OVERTOPPING FREQUENCY	=	YRS
OVERTOPPING DISCHARGE	=	CFS
OVERTOPPING ELEVATION	=	FT

PI = 109+64.00
EL = 2165.16'
VC = 365'
*K = 44 (DS = 40 MPH)

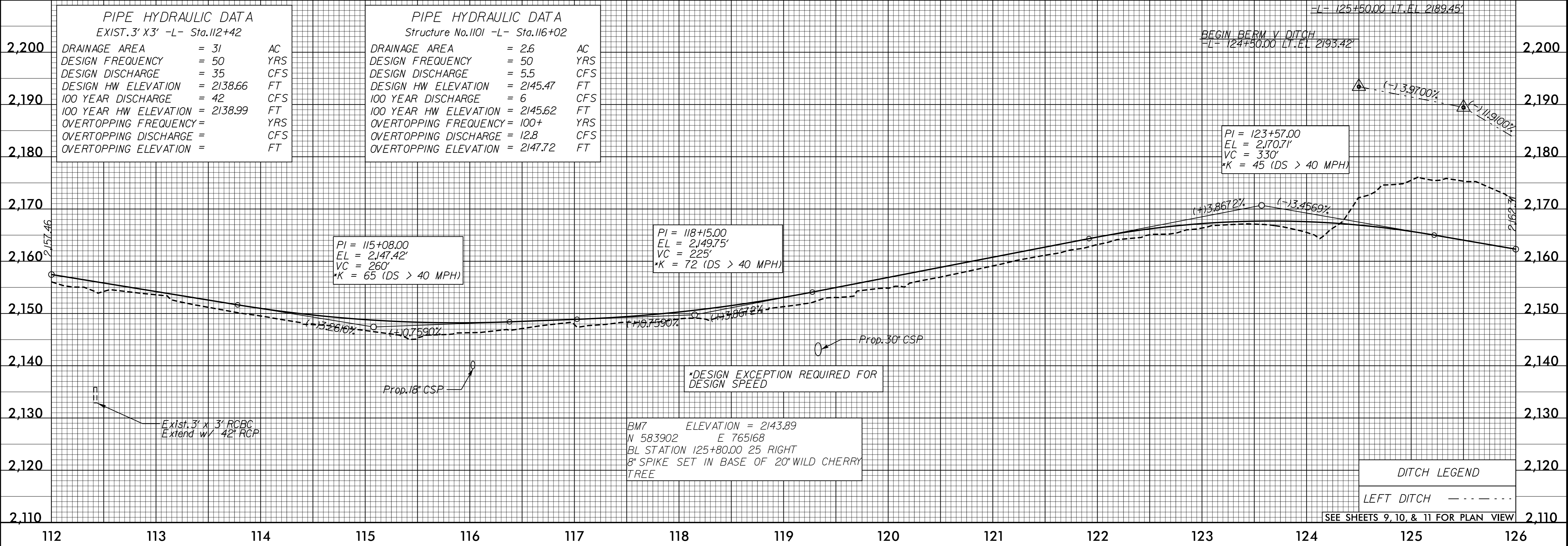


PIPE HYDRAULIC DATA
EXIST. 3' X 3' -L- Sta.112+42

DRAINAGE AREA	= 31	AC
DESIGN FREQUENCY	= 50	YRS
DESIGN DISCHARGE	= 35	CFS
DESIGN HW ELEVATION	= 2138.66	FT
100 YEAR DISCHARGE	= 42	CFS
100 YEAR HW ELEVATION	= 2138.99	FT
OVERTOPPING FREQUENCY	=	YRS
OVERTOPPING DISCHARGE	=	CFS
OVERTOPPING ELEVATION	=	FT

PIPE HYDRAULIC DATA
Structure No.1101 -L- Sta.116+02

DRAINAGE AREA	= 2.6	AC
DESIGN FREQUENCY	= 50	YRS
DESIGN DISCHARGE	= 5.5	CFS
DESIGN HW ELEVATION	= 2145.47	FT
100 YEAR DISCHARGE	= 6	CFS
100 YEAR HW ELEVATION	= 2145.62	FT
OVERTOPPING FREQUENCY	= 100+	YRS
OVERTOPPING DISCHARGE	= 12.8	CFS
OVERTOPPING ELEVATION	= 2147.72	FT



DITCH LEGEND
LEFT DITCH - - - - -

SEE SHEETS 9, 10, & 11 FOR PLAN VIEW

invgrid_expression
115560112.dwg-pl122.dgn