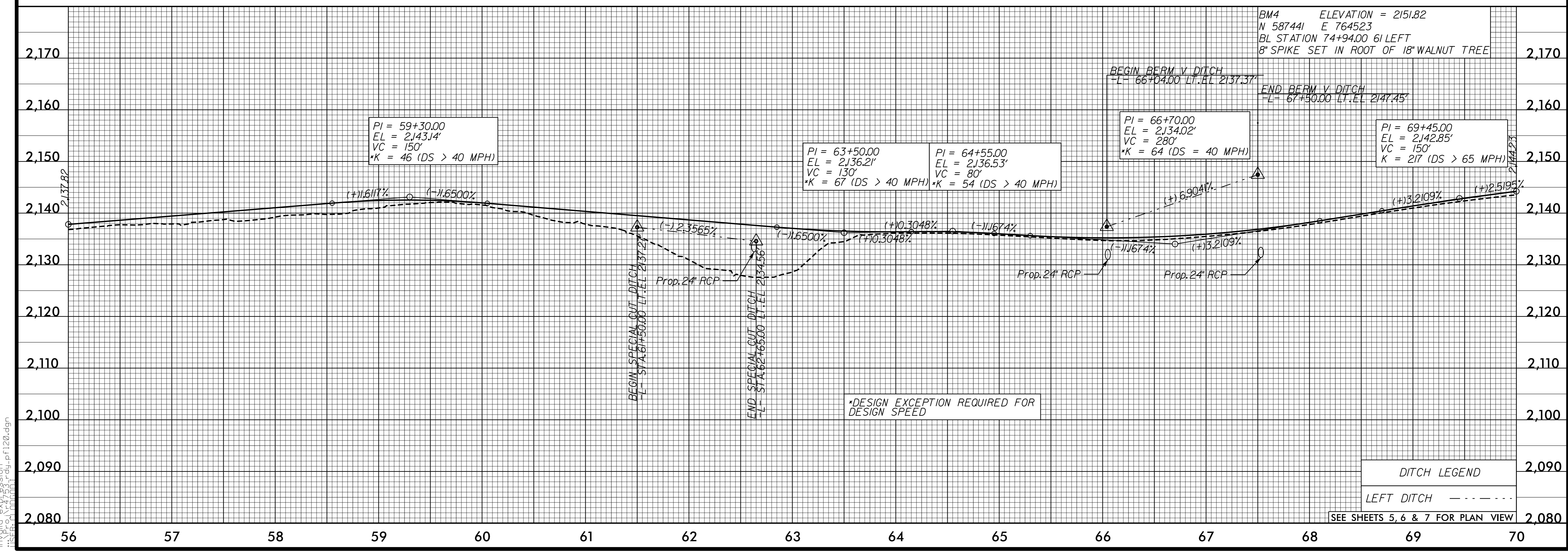
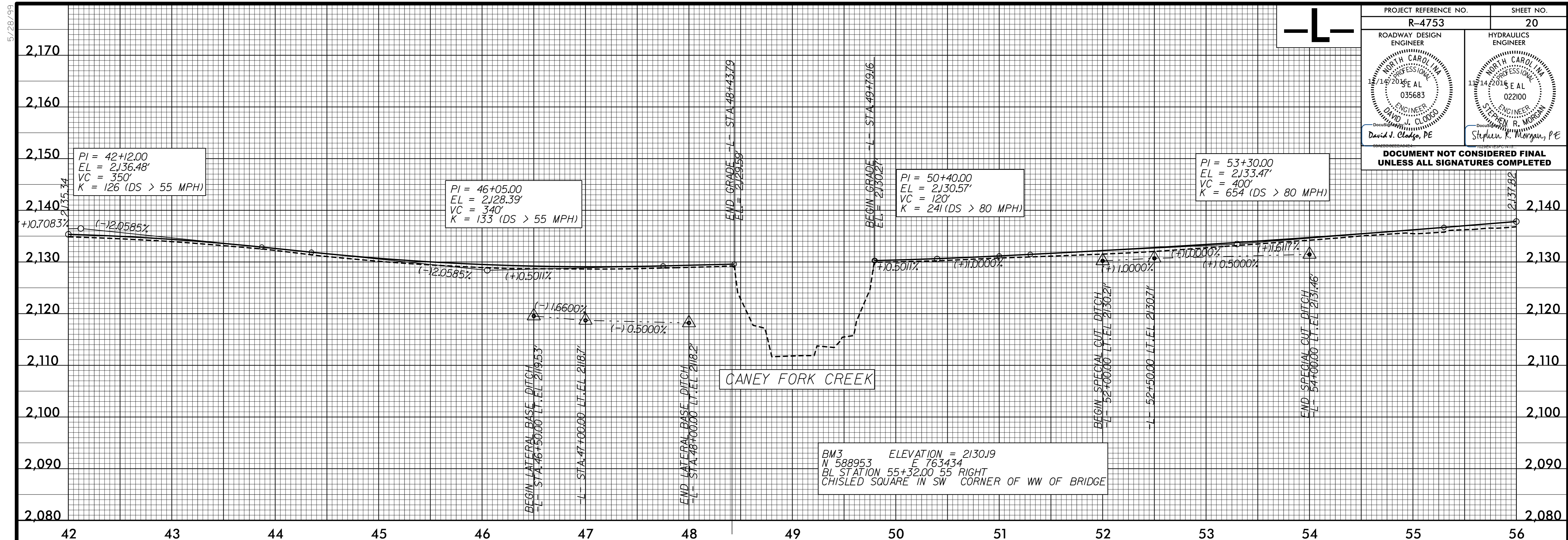




PROJECT REFERENCE NO. R-4753	SHEET NO. 20
ROADWAY DESIGN ENGINEER DAVID J. CLODDO NORTH CAROLINA PROFESSIONAL ENGINEER 035683	HYDRAULICS ENGINEER STEPHEN K. MORGAN, P.E. NORTH CAROLINA PROFESSIONAL ENGINEER 022100

DOCUMENT NOT CONSIDERED FINAL UNLESS ALL SIGNATURES COMPLETED



*DESIGN EXCEPTION REQUIRED FOR DESIGN SPEED

DITCH LEGEND
LEFT DITCH - - - - -

SEE SHEETS 5, 6 & 7 FOR PLAN VIEW

invgrid_expression
H:\SEF\CA\PROJECTS\1200\1200.dgn