

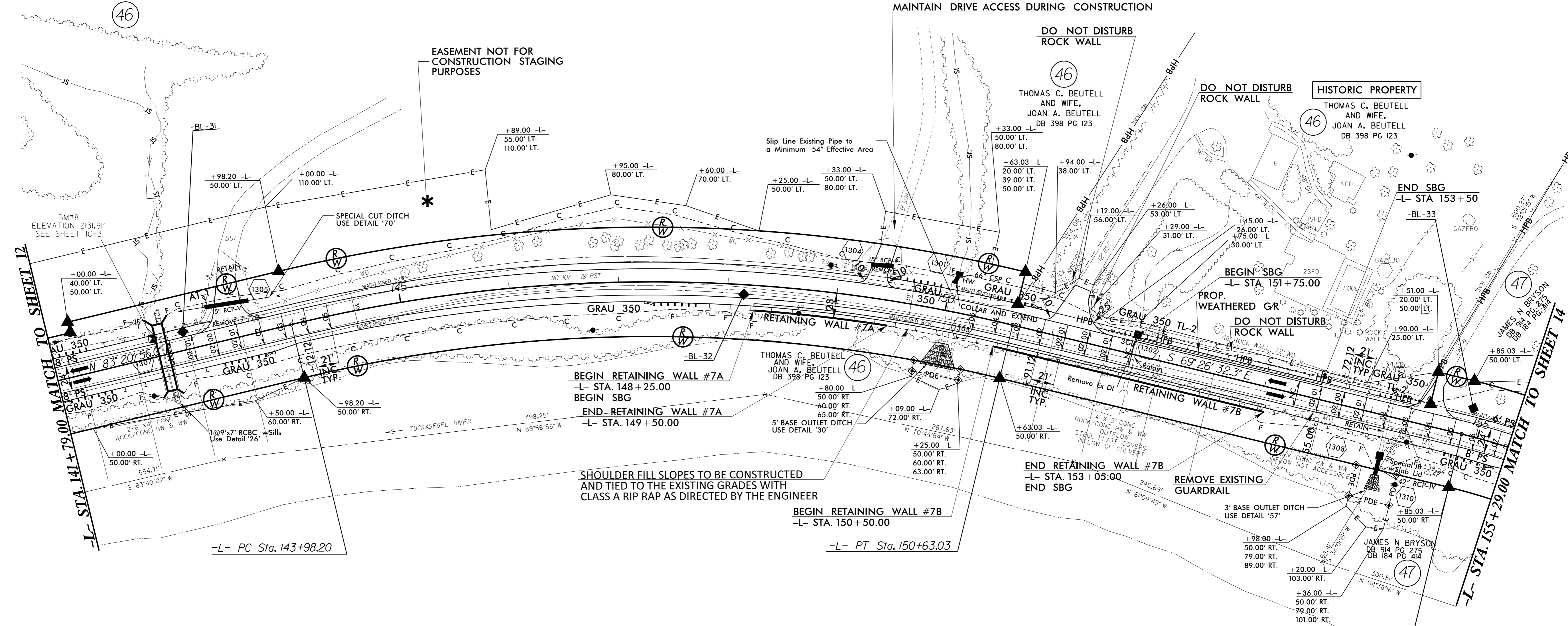
PROJECT REFERENCE NO. R-4753		SHEET NO. 13	
RW SHEET NO.			
ROADWAY DESIGN ENGINEER		HYDRAULICS ENGINEER	
David J. Clodgo, PE		Stephen R. Morgan, PE	
DOCUMENT NOT CONSIDERED FINAL UNLESS ALL SIGNATURES COMPLETED			

NAD 83/NSRS 2007

-L-	
PI Sta 147+37.01	PI Sta 156+13.24
$\Delta = 27^{\circ}12'31.7''$ (RT)	$\Delta = 25^{\circ}21'12.8''$ (RT)
D = 4'05'33.2"	D = 10'03'06.8"
L = 664.84'	L = 252.23'
T = 338.81'	T = 128.21'
R = 1,400.00'	*R = 570.00' (40mph)
SE = .05	SE = .08
RO = 105'	RO = 168'

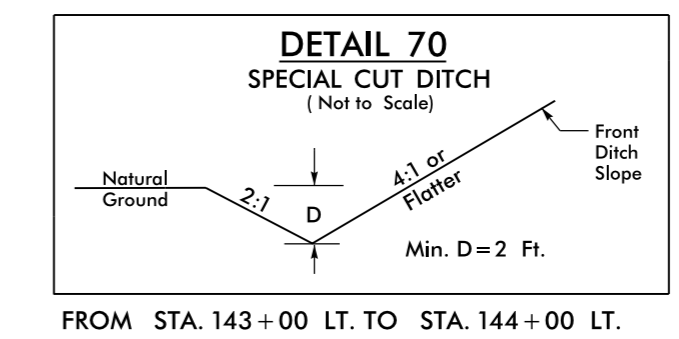
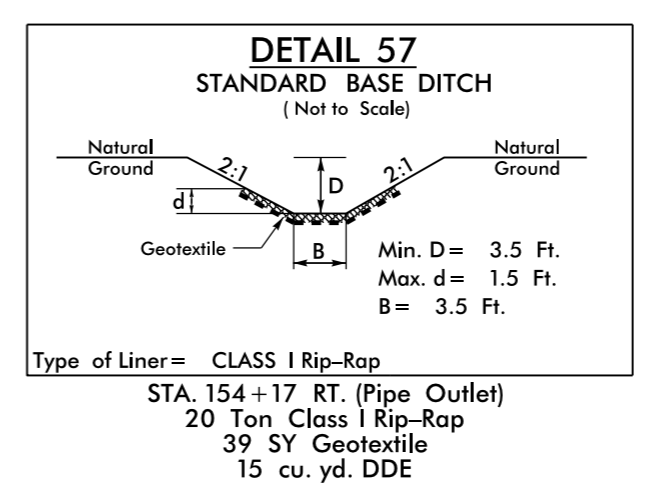
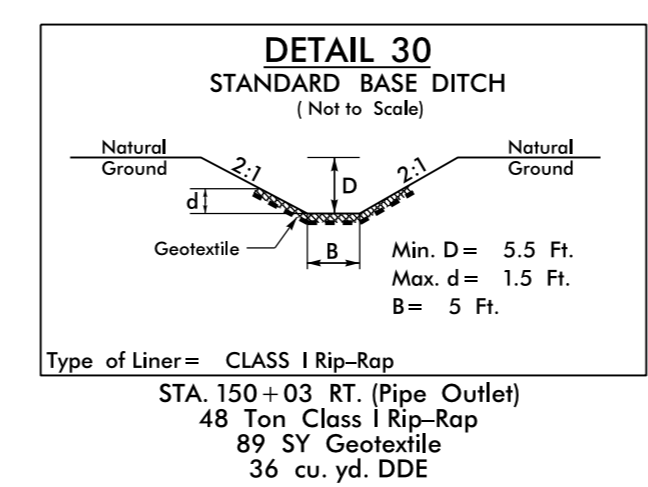
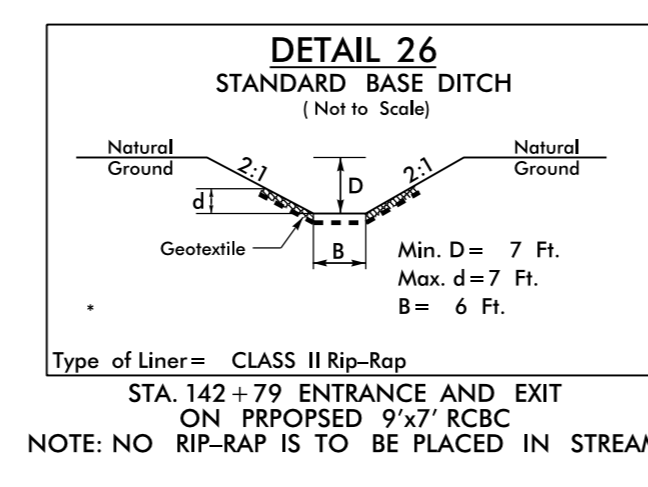
\* Design Exception Required For Design Speed

THOMAS C. BEUTELL  
AND WIFE,  
JOAN A. BEUTELL  
DB 398 PG 123



MATCH TO SHEET 12  
-L- STA. 141 + 79.00

MATCH TO SHEET 14  
-L- STA. 155 + 29.00



Note: All Driveway Radii are 20' Unless Otherwise Noted  
 Note: Tie all Driveways to the Right of Way Line. Follow the "Pavement Design for Driveways" Memo Dated March 18, 2002 or as Directed by the Engineer  
 Note: All Proposed Guardrail to Use Weathered Steel Unless Otherwise Noted

SBG = SHOULDER BERM GUTTER  
 SEE SHEETS 23 & 24 FOR -L- PROFILE  
 SEE SHEETS C-1 THRU C-14 FOR CULVERT PLANS  
 SEE SHEETS W-1 THRU W-8 FOR RETAINING WALL PLANS

REVISIONS

Invalid expression: \\53.Rdu-psht13.dgn  
USER: N1000007