

SEE SHEET 3 FOR PLAN SHEET LAYOUT
AT TIME OF INVESTIGATION

STATE OF NORTH CAROLINA
DEPARTMENT OF TRANSPORTATION
DIVISION OF HIGHWAYS
GEOTECHNICAL ENGINEERING UNIT

STATE	STATE PROJECT REFERENCE NO.	SHEET NO.	TOTAL SHEETS
N.C.	B-5548	1	9

CONTENTS

LINE	STATION	PLAN	PROFILE
-L-	11+00.00 to 47+50.00	4-6	7-8
SAMPLE RESULTS		9	

**ROADWAY
SUBSURFACE INVESTIGATION**

COUNTY CABARRUS
PROJECT DESCRIPTION BRIDGE 103 OVER DUTCH
BUFFALO CREEK ON NC 49

INVENTORY

CAUTION NOTICE

THE SUBSURFACE INFORMATION AND THE SUBSURFACE INVESTIGATION ON WHICH IT IS BASED WERE MADE FOR THE PURPOSE OF STUDY, PLANNING AND DESIGN, AND NOT FOR CONSTRUCTION OR PAY PURPOSES. THE VARIOUS FIELD BORING LOGS, ROCK CORES AND SOIL TEST DATA AVAILABLE MAY BE REVIEWED OR INSPECTED IN RALEIGH BY CONTACTING THE N. C. DEPARTMENT OF TRANSPORTATION, GEOTECHNICAL ENGINEERING UNIT AT (919) 707-6850. THE SUBSURFACE PLANS AND REPORTS, FIELD BORING LOGS, ROCK CORES AND SOIL TEST DATA ARE NOT PART OF THE CONTRACT.

GENERAL SOIL AND ROCK STRATA DESCRIPTIONS AND INDICATED BOUNDARIES ARE BASED ON A GEOTECHNICAL INTERPRETATION OF ALL AVAILABLE SUBSURFACE DATA AND MAY NOT NECESSARILY REFLECT THE ACTUAL SUBSURFACE CONDITIONS BETWEEN BORINGS OR BETWEEN SAMPLED STRATA WITHIN THE BOREHOLE. THE LABORATORY SAMPLE DATA AND THE IN SITU (IN-PLACE) TEST DATA CAN BE RELIED ON ONLY TO THE DEGREE OF RELIABILITY INHERENT IN THE STANDARD TEST METHOD. THE OBSERVED WATER LEVELS OR SOIL MOISTURE CONDITIONS INDICATED IN THE SUBSURFACE INVESTIGATIONS ARE AS RECORDED AT THE TIME OF THE INVESTIGATION. THESE WATER LEVELS OR SOIL MOISTURE CONDITIONS MAY VARY CONSIDERABLY WITH TIME ACCORDING TO CLIMATIC CONDITIONS INCLUDING TEMPERATURES, PRECIPITATION AND WIND, AS WELL AS OTHER NON-CLIMATIC FACTORS.

THE BIDDER OR CONTRACTOR IS CAUTIONED THAT DETAILS SHOWN ON THE SUBSURFACE PLANS ARE PRELIMINARY ONLY AND IN MANY CASES THE FINAL DESIGN DETAILS ARE DIFFERENT. FOR BIDDING AND CONSTRUCTION PURPOSES, REFER TO THE CONSTRUCTION PLANS AND DOCUMENTS FOR FINAL DESIGN INFORMATION ON THIS PROJECT. THE DEPARTMENT DOES NOT WARRANT OR GUARANTEE THE SUFFICIENCY OR ACCURACY OF THE INVESTIGATION MADE, NOR THE INTERPRETATIONS MADE, OR OPINION OF THE DEPARTMENT AS TO THE TYPE OF MATERIALS AND CONDITIONS TO BE ENCOUNTERED. THE BIDDER OR CONTRACTOR IS CAUTIONED TO MAKE SUCH INDEPENDENT SUBSURFACE INVESTIGATIONS AS HE DEEMS NECESSARY TO SATISFY HIMSELF AS TO CONDITIONS TO BE ENCOUNTERED ON THE PROJECT. THE CONTRACTOR SHALL HAVE NO CLAIM FOR ADDITIONAL COMPENSATION OR FOR AN EXTENSION OF TIME FOR ANY REASON RESULTING FROM THE ACTUAL CONDITIONS ENCOUNTERED AT THE SITE DIFFERING FROM THOSE INDICATED IN THE SUBSURFACE INFORMATION.

- NOTES:
- THE INFORMATION CONTAINED HEREIN IS NOT IMPLIED OR GUARANTEED BY THE N. C. DEPARTMENT OF TRANSPORTATION AS ACCURATE NOR IS IT CONSIDERED PART OF THE PLANS, SPECIFICATIONS OR CONTRACT FOR THE PROJECT.
 - BY HAVING REQUESTED THIS INFORMATION, THE CONTRACTOR SPECIFICALLY WAIVES ANY CLAIMS FOR INCREASED COMPENSATION OR EXTENSION OF TIME BASED ON DIFFERENCES BETWEEN THE CONDITIONS INDICATED HEREIN AND THE ACTUAL CONDITIONS AT THE PROJECT SITE.

PERSONNEL

C.C. MURRAY

C.L. SMITH

B.J. CRYSTAL

J.D. PRIVOTT

J.A. NEWBERRY

R.W. TODD

R.J. TUCKER

R.S. HINSON

J.P. ROGERS

INVESTIGATED BY C.B. LITTLE

DRAWN BY J.K. McCLURE

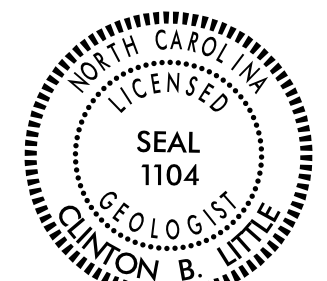
CHECKED BY C.B. LITTLE

SUBMITTED BY C.B. LITTLE

DATE SEPTEMBER 2015

REFERENCE: B-5548

PROJECT: 55048



DocuSigned by

Clinton B. Little

930443D5AC8E452... 9/16/2015

SIGNATURE

DATE

SIGNATURE

DATE

See Sheet 1-A For Index of Sheets

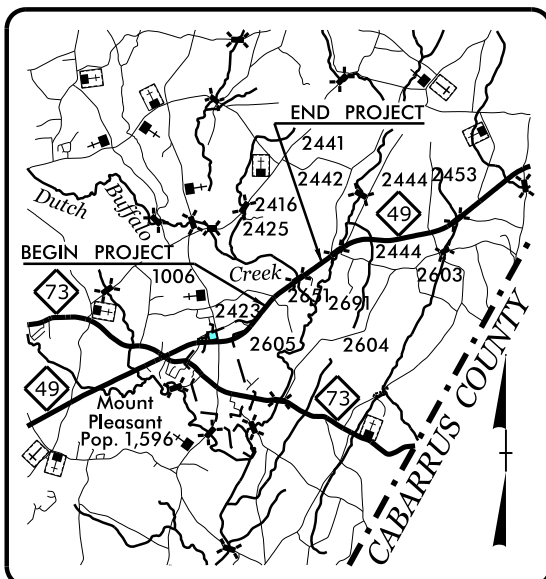
STATE OF NORTH CAROLINA
DIVISION OF HIGHWAYS

CABARRUS COUNTY

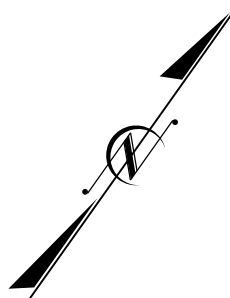
LOCATION: BRIDGE NO.103 OVER DUTCH BUFFALO CREEK ON NC 49.

TYPE OF WORK: GRADING, PAVING, DRAINAGE AND STRUCTURE.

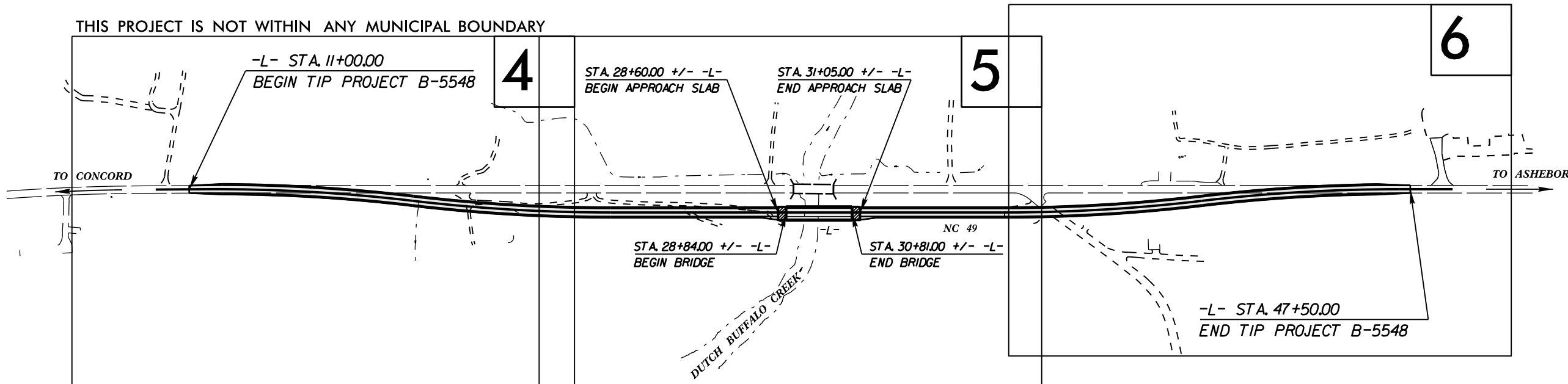
STATE	STATE PROJECT REFERENCE NO.	SHEET NO.	TOTAL SHEETS
N.C.	B-5548	3	
STATE PROJ. NO.	F.A. PROJ. NO.	DESCRIPTION	
55048.1.1	BRSTP-1008(23)	PE	



VICINITY MAP

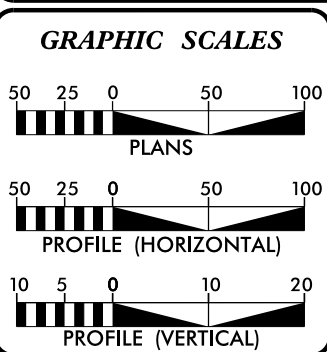


TIP PROJECT: B-5548



CLEARING ON THIS PROJECT SHALL BE PERFORMED TO THE LIMITS ESTABLISHED BY METHOD III

INCOMPLETE PLANS
DO NOT USE FOR R/W ACQUISITION
PRELIMINARY PLANS
DO NOT USE FOR CONSTRUCTION



DESIGN DATA

ADT xxxx = xxxx
ADT xxxx = xxxx
DHV = xx %
D = xx %
T = xx % *
V = 60 MPH
* TTST = x DUAL = x
FUNC CLASS =
RURAL LOCAL
SUB-REGIONAL TIER

PROJECT LENGTH

LENGTH OF ROADWAY TIP PROJECT B-5548 =	0.654 MI
LENGTH OF STRUCTURE TIP PROJECT B-5548 =	0.037 MI
TOTAL LENGTH OF TIP PROJECT B-5548 =	0.691 MI

Prepared in the Office of:
DIVISION OF HIGHWAYS
1000 Birch Ridge Dr., Raleigh NC, 27610

2012 STANDARD SPECIFICATIONS

RIGHT OF WAY DATE: DECEMBER 16, 2016

LETTING DATE: DECEMBER 19, 2017

GREG E. BREW, PE
PROJECT ENGINEER

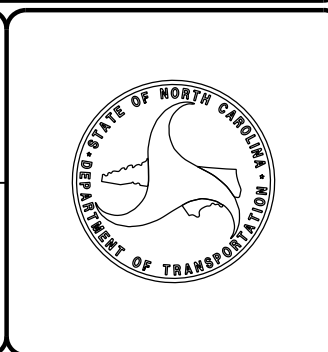
WAYNE T. BEST
PROJECT DESIGN ENGINEER

HYDRAULICS ENGINEER

SIGNATURE: _____ P.E.

ROADWAY DESIGN ENGINEER

SIGNATURE: _____ P.E.



23-MAR-2015 10:32 C:\Projects\B5548_GEO_ROWY_CABARRUS\CADD_GEO_INV_003_Rdy_tsh.dgn incclosure AT 06H27238

CONTRACT:

PROJECT REFERENCE NO.	SHEET NO.
B-5548	4
RW SHEET NO.	
ROADWAY DESIGN ENGINEER	HYDRAULICS ENGINEER
INCOMPLETE PLANS DO NOT USE FOR R/W ACQUISITION PRELIMINARY PLANS DO NOT USE FOR CONSTRUCTION	

LARRY HAMMILL
DB 782 PG 447
DB 619 PG 74
DB 500 PG 93

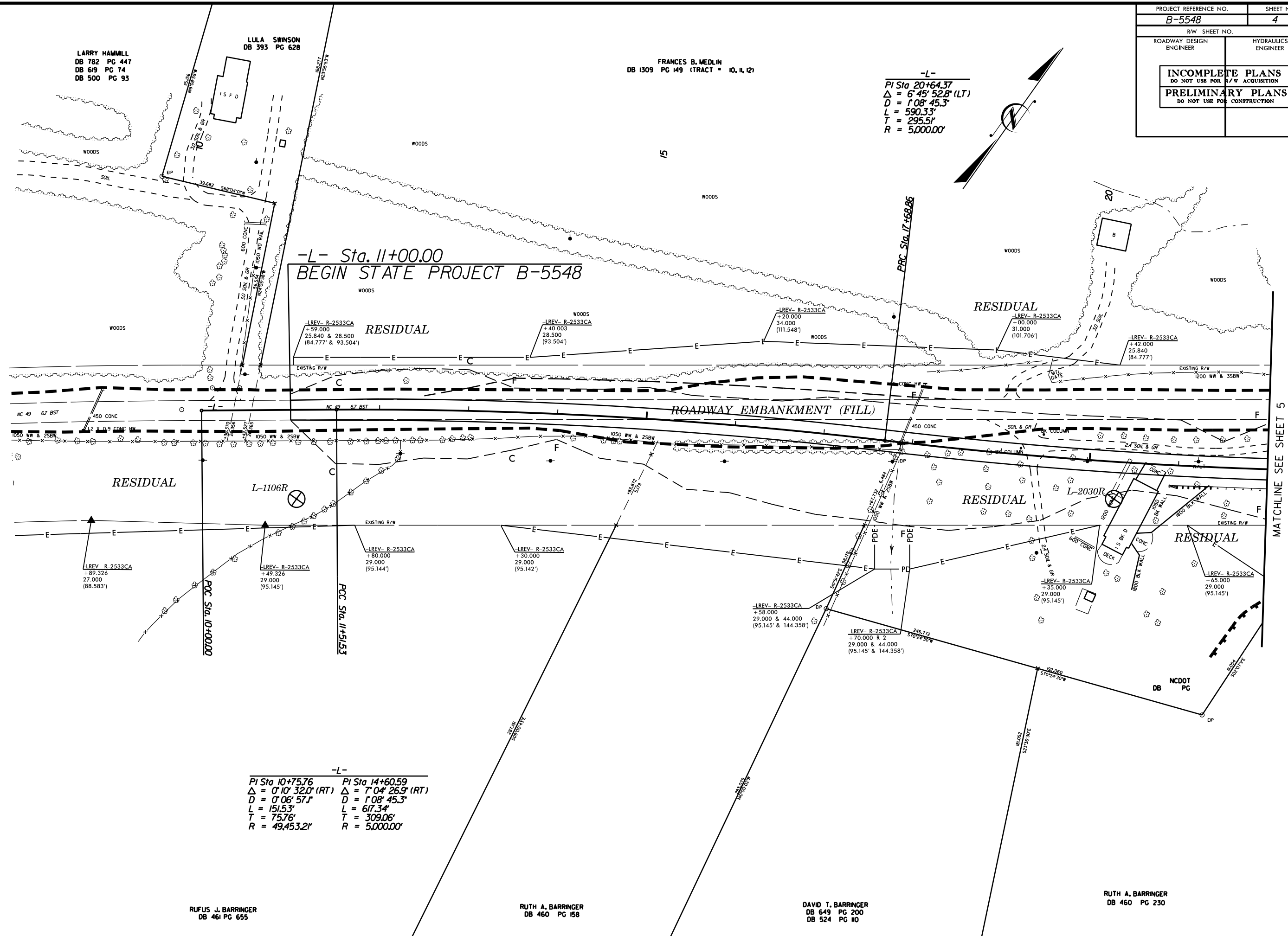
LULA SWINSON
DB 393 PG 628

FRANCES B. MEDLIN
DB 1309 PG 149 (TRACT = 10, 11, 12)

-L-
 PI Sta 20+64.37
 $\Delta = 6' 45'' 52.8''$ (LT)
 $D = 1' 08'' 45.3''$
 $L = 590.33'$
 $T = 295.5'$
 $R = 5,000.00'$



-L- Sta. 11+00.00
 BEGIN STATE PROJECT B-5548



RESIDUAL

RESIDUAL

RESIDUAL

-L-
 PI Sta 10+75.76 PI Sta 14+60.59
 $\Delta = 0' 10'' 32.0''$ (RT) $\Delta = 7' 04'' 26.3''$ (RT)
 $D = 0' 06'' 57.1''$ $D = 1' 08'' 45.3''$
 $L = 151.53'$ $L = 617.34'$
 $T = 75.76'$ $T = 309.06'$
 $R = 49,453.2'$ $R = 5,000.00'$

RUFUS J. BARRINGER
DB 461 PG 655

RUTH A. BARRINGER
DB 460 PG 158

DAVID T. BARRINGER
DB 649 PG 200
DB 524 PG 110

RUTH A. BARRINGER
DB 460 PG 230

MATCHLINE SEE SHEET 5

8/17/99
 20-MAR-2015 13:08
 C:\p\projects\B5548\B5548_GED_RDWY_CABARRUS\CADD_GEDTECH\Plan\Pro\B5548_GED_rvw_004.dgn
 mchillie

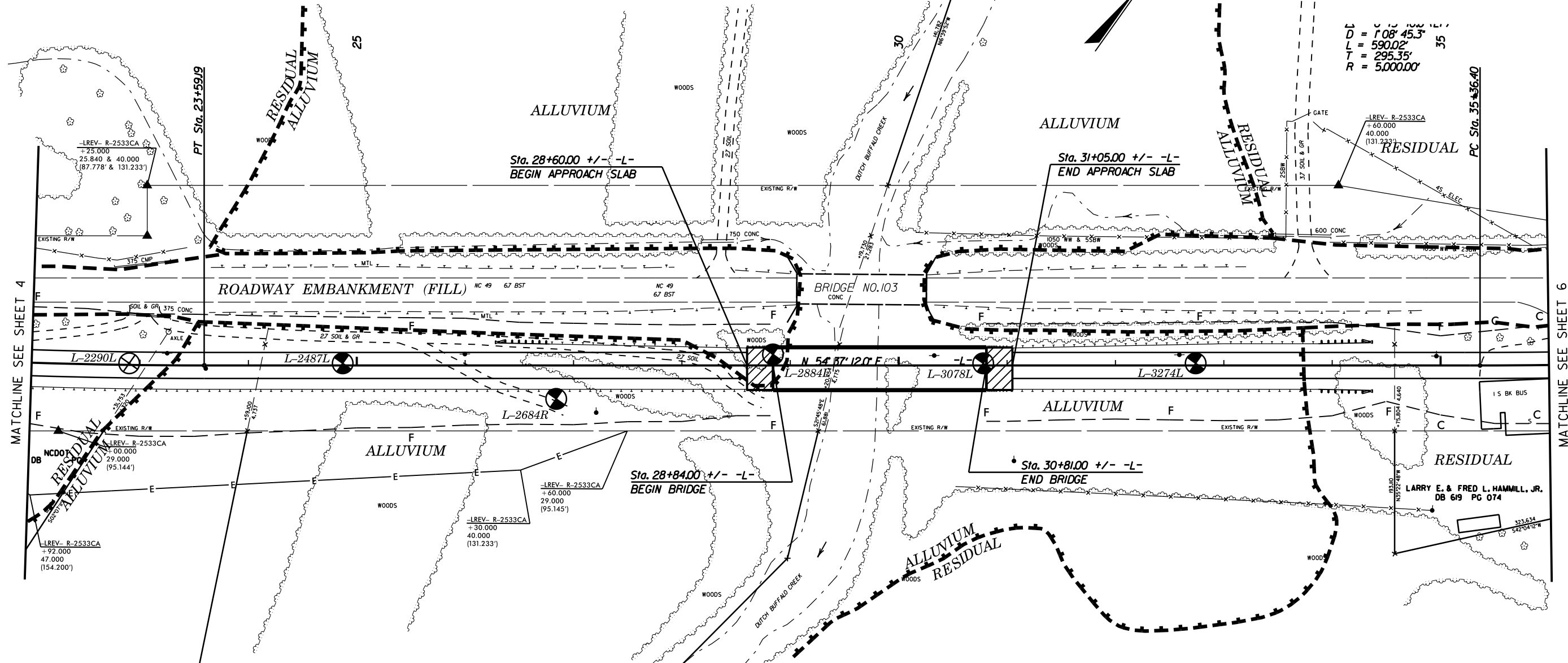
PROJECT REFERENCE NO. B-5548	SHEET NO. 5
RW SHEET NO.	
ROADWAY DESIGN ENGINEER	HYDRAULICS ENGINEER
INCOMPLETE PLANS DO NOT USE FOR A/W ACQUISITION	
PRELIMINARY PLANS DO NOT USE FOR CONSTRUCTION	

FRANCES B. MEDLIN
DB 1309 PG 149 (TRACT # 10, 11, 12)

ERNEST
Y. CHOU
DB 784 PG 164
DB 800 PG 194

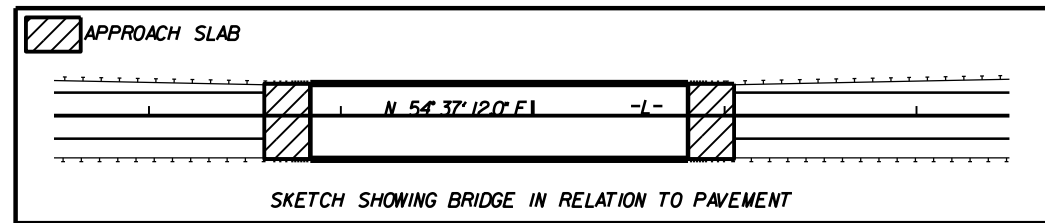
-L-
PI Sta 20+64.37
 $\Delta = 6' 45" 52.8" (LT)$
 $D = 1' 08" 45.3"$
 $L = 590.33'$
 $T = 295.5'$
 $R = 5,000.00'$

-L-
 $D = 1' 08" 45.3"$
 $L = 590.02'$
 $T = 295.35'$
 $R = 5,000.00'$



MATCHLINE SEE SHEET 4

MATCHLINE SEE SHEET 6



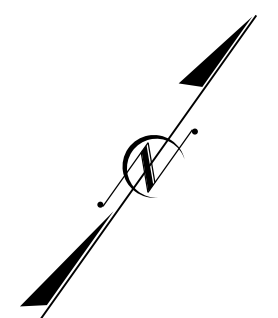
RUTH A. BARRINGER
DB 460 PG 230

RUFUS J. BARRINGER
DB 460 PG 229

HELEN HAMMILL
DB 460 PG 092

8/17/99
20-MAR-2015 13:15
C:\p\projects\B5548_GEO_RDWY_CABARRUS\CADD_GEO\TECH\Plan\Pro\B5548_GEO_rv_005.dgn
mch

PROJECT REFERENCE NO.	SHEET NO.
B-5548	6
RW SHEET NO.	
ROADWAY DESIGN ENGINEER	HYDRAULICS ENGINEER
INCOMPLETE PLANS DO NOT USE FOR R/W ACQUISITION PRELIMINARY PLANS DO NOT USE FOR CONSTRUCTION	



ERNEST
Y. CHOU
DB 784 PG 164
DB 800 PG 194

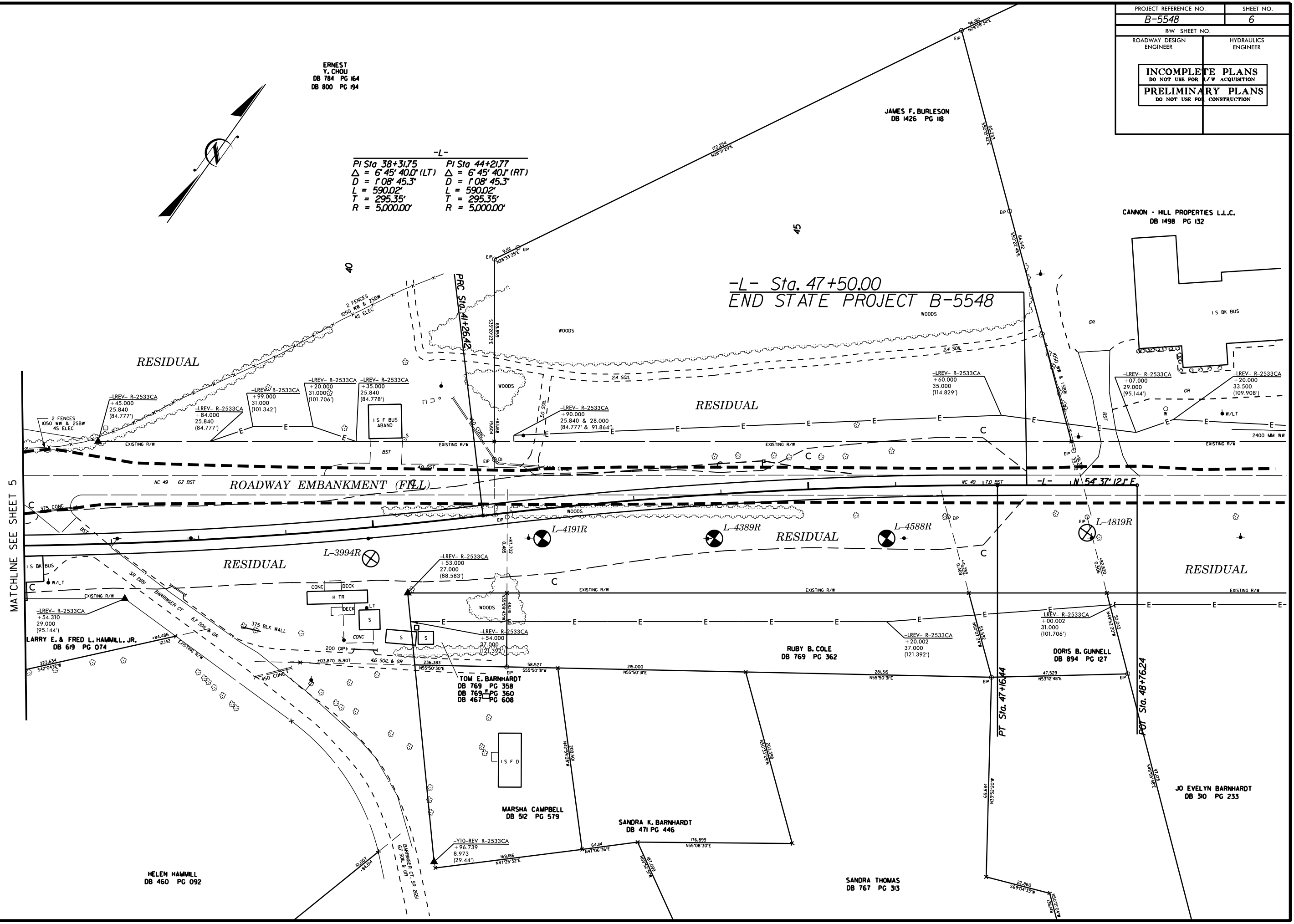
JAMES F. BURLESON
DB 1426 PG 118

CANNON - HILL PROPERTIES L.L.C.
DB 1498 PG 132

-L-

PI Sta 38+31.75	PI Sta 44+21.77
$\Delta = 6' 45'' 40.0''$ (LT)	$\Delta = 6' 45'' 40.0''$ (RT)
$D = 108' 45.3''$	$D = 108' 45.3''$
$L = 590.02'$	$L = 590.02'$
$T = 295.35'$	$T = 295.35'$
$R = 5,000.00'$	$R = 5,000.00'$

-L- Sta. 47+50.00
END STATE PROJECT B-5548

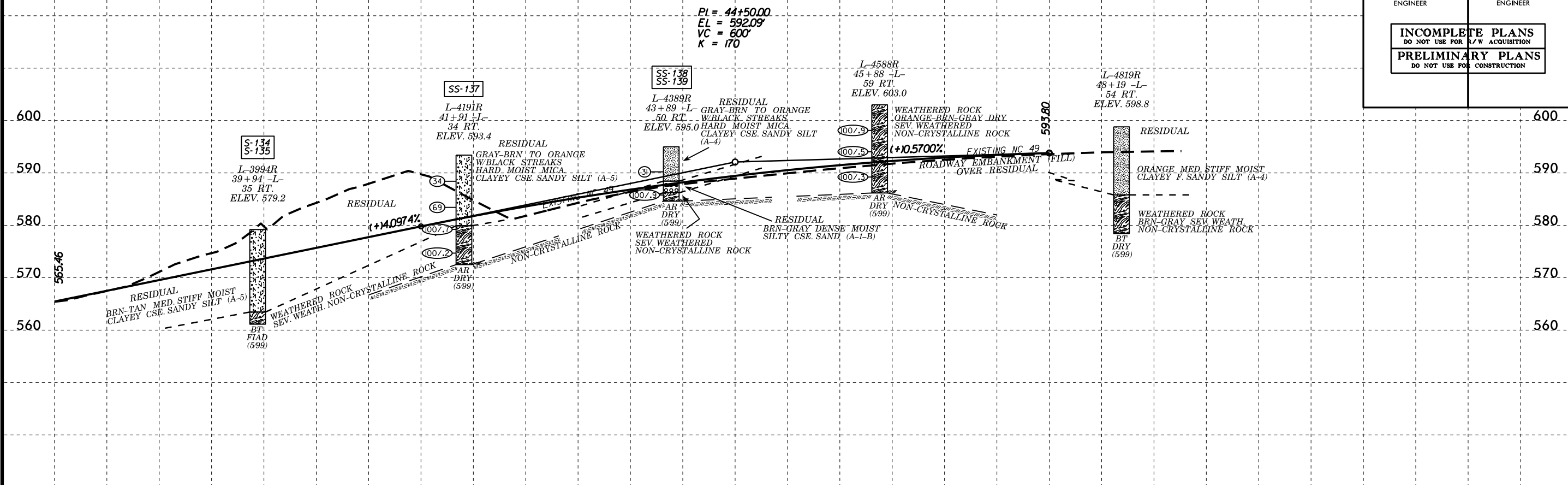


MATCHLINE SEE SHEET 5

20-MAR-2015 13:18 C:\p\projects\B5548_GEO_RDWY_CABARRUS\CADD_GEO\TECH\Plan\Pro\B5548_GEO_rvw_006.dgn

5/28/99

PROJECT REFERENCE NO. B-5548	SHEET NO. 8
ROADWAY DESIGN ENGINEER	HYDRAULICS ENGINEER
INCOMPLETE PLANS DO NOT USE FOR A/W ACQUISITION	
PRELIMINARY PLANS DO NOT USE FOR CONSTRUCTION	



38 39 40 41 42 43 44 45 46 47 48

23-MAR-2015 10:15
 C:\P\Projects\B5548_GEO_RDWY_CABARRUS\CADD_GEO\TECH\Plan\Prof\B5548_GEO_pf1&pf1.L_007&008.dgn
 mcs:lfh

