

BILL OF MATERIAL						
FOR CONCRETE BARRIER RAIL ONLY						
BAR	NO.	SIZE	TYPE	LENGTH	WEIGHT	
* B1	132	#5	STR	29'-7"	4073	
* S1	354	#5	1	4'-7"	1692	
* S2	354	#5	2	7'-0"	2585	
* S5	8	#5	3	3'-5"	29	
* S6	8	#5	STR	3'-3"	27	
* EPOXY COATED REINFORCING STEEL					LBS.	8,406
CLASS AA CONCRETE					C.Y.	49.0
CONCRETE BARRIER RAIL					LIN. FT.	359.83

NOTES

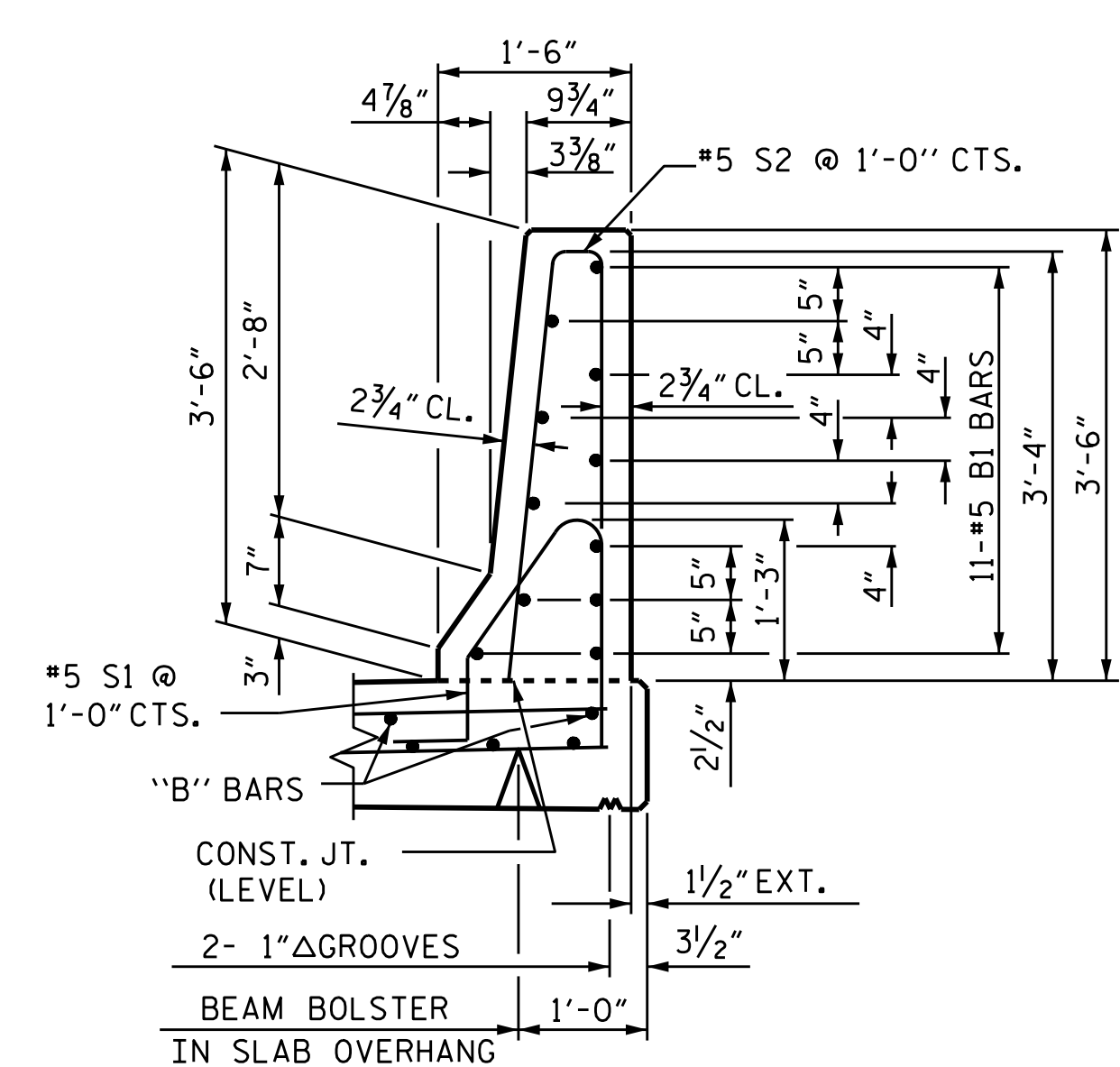
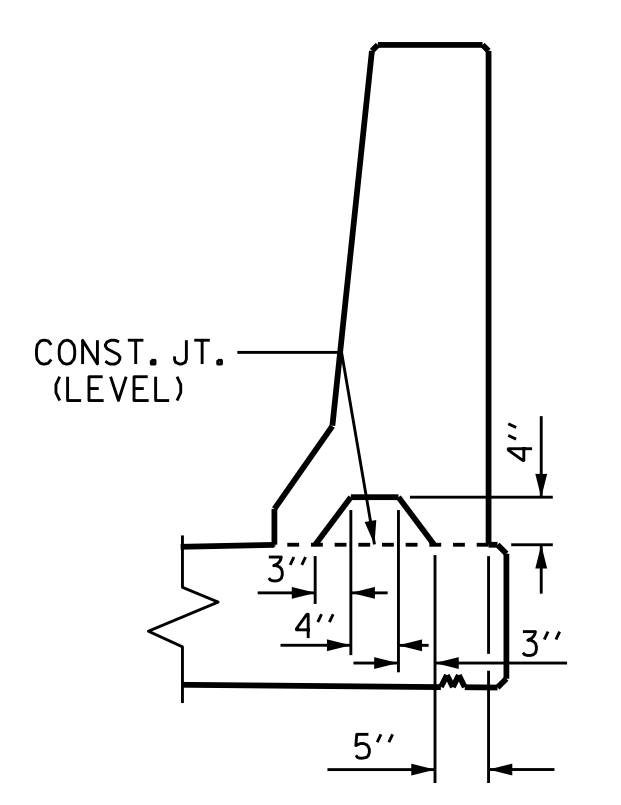
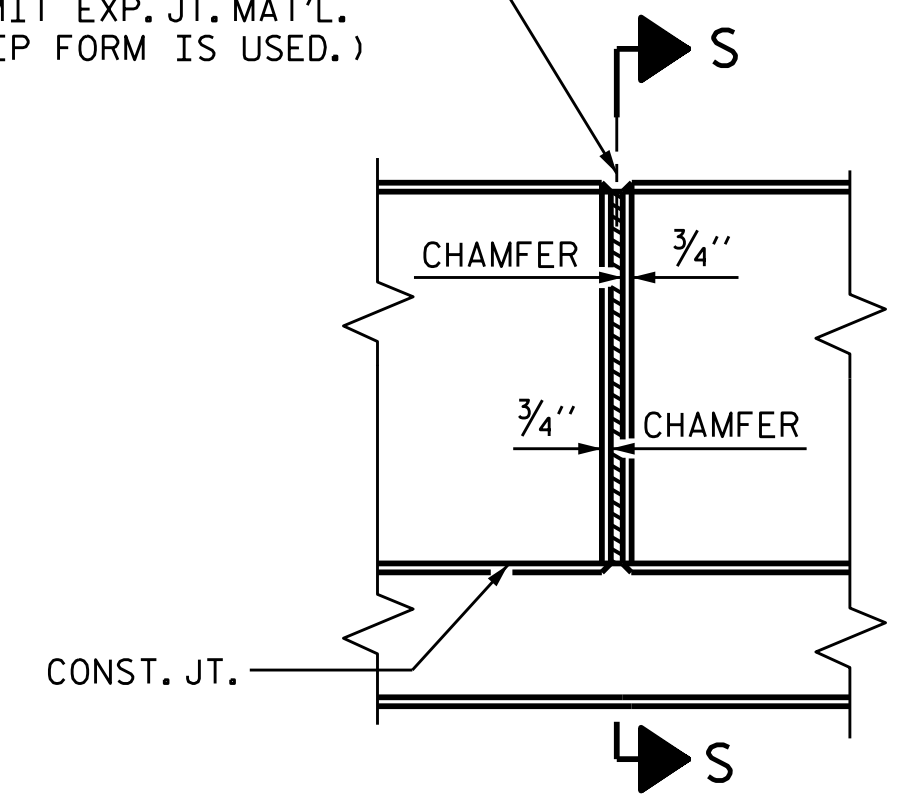
THE BARRIER RAIL IN EACH SPAN SHALL NOT BE CAST UNTIL ALL SLAB CONCRETE IN THAT SPAN HAS BEEN CAST AND HAS REACHED A MINIMUM COMPRESSIVE STRENGTH OF 3,000 PSI.

THE #5 S5 AND S6 BARS SHALL BE INSTALLED, USING AN ADHESIVE ANCHORING SYSTEM, AFTER SAWING THE JOINT. THE YIELD LOAD FOR THE #5 S5 AND S6 BARS IS 18.6 KIPS. FIELD TESTING FOR THE ADHESIVE BONDING SYSTEM IS NOT REQUIRED.

ALL REINFORCING STEEL IN BARRIER RAILS SHALL BE EPOXY COATED.

GROOVED CONTRACTION JOINTS, 1/2" IN DEPTH, SHALL BE TOOLED IN ALL EXPOSED FACES OF THE BARRIER RAIL AND IN ACCORDANCE WITH ARTICLE 825-10(B) OF THE STANDARD SPECIFICATIONS. THE CONTRACTION JOINT SHALL BE LOCATED AT EACH THIRD POINT BETWEEN BARRIER RAIL EXPANSION JOINTS. ONLY ONE CONTRACTION JOINT IS REQUIRED AT MIDPOINT OF BARRIER RAIL SEGMENTS LESS THAN 20 FEET IN LENGTH AND NO CONTRACTION JOINTS ARE REQUIRED FOR THOSE SEGMENTS LESS THAN 10 FEET IN LENGTH.

1/2" EXP. JT. MAT'L HELD IN PLACE WITH GALVANIZED NAILS.
(NOTE: OMIT EXP. JT. MAT'L. WHEN SLIP FORM IS USED.)



END OF RAIL DETAILS
FOR ADHESIVE ANCHORING AT SAWED JOINTS

BARRIER RAIL DETAILS

PROJECT NO. B-5548
CABARRUS COUNTY
STATION: 29+55.00 -L-

SHEET 1 OF 2



STATE OF NORTH CAROLINA
DEPARTMENT OF TRANSPORTATION
RALEIGH
STANDARD
CONCRETE
BARRIER RAIL

REVISIONS						SHEET NO.	
NO.	BY:	DATE:	NO.	BY:	DATE:	S-18	
1			3			TOTAL SHEETS 30	
2			4				

DOCUMENT NOT CONSIDERED FINAL UNLESS ALL SIGNATURES COMPLETED

ASSEMBLED BY :	N.D'AIUTO	DATE :	12/16/15
CHECKED BY :	J. P. MCCARTHA	DATE :	6/9/16
DRAWN BY :	ARB	5/87	REV. 10/1/11
CHECKED BY :	SJD	9/87	REV. 7/12
			REV. 6/13
			MAA/GM
			MAA/GM
			MAA/GM