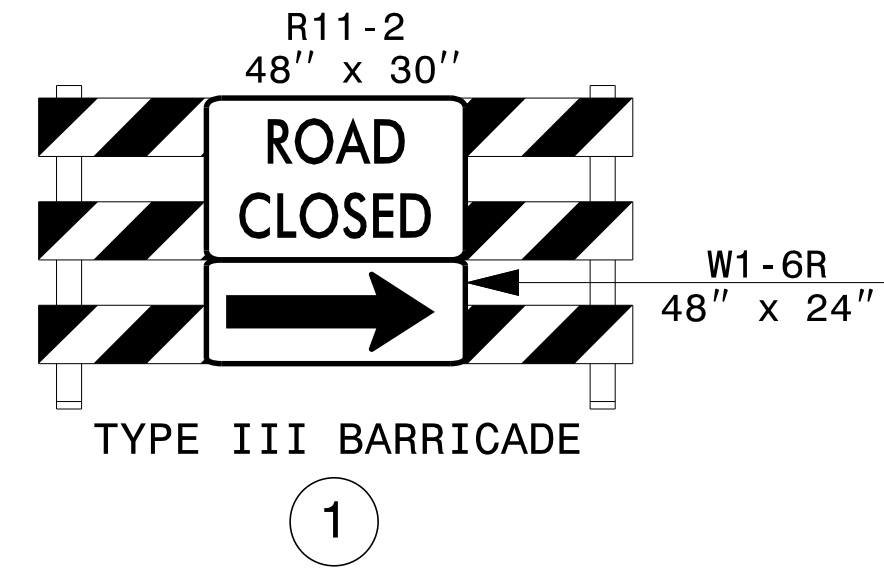


**TEMPORARY PAVEMENT MARKING LEGEND**

- (PA) PAINT - WHITE EDGELINE - (4")
- (PI) PAINT - YELLOW DOUBLE CENTER - (4")

REFER TO RSD NOS. 1205.01, 1205.02, 1250.01, AND 1251.01 FOR PLACEMENT OF TEMPORARY PAVEMENT MARKINGS AND MARKERS UNLESS NOTED OTHERWISE.

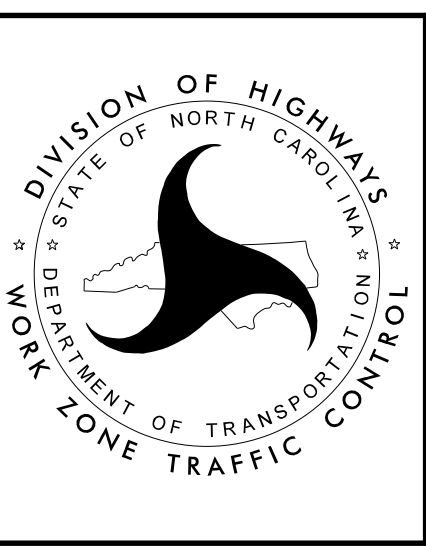


9/27/2016 p:\tip\projects-b\5548\trafficcontrol\top\B5548\_TC\_PH2\_TMP05.dgn User:scodts

APPROVED: *Don A. Parker*  
40482802619410...

DATE: 9/27/2016

**DOCUMENT NOT CONSIDERED FINAL  
UNLESS ALL SIGNATURES COMPLETED**



**PHASE II DETAILS**