

TEMPORARY TRAFFIC CONTROL PHASING

NOTE: BEFORE BEGINNING CONSTRUCTION THE CONTRACTOR SHALL PLACE ADVANCE WORK ZONE WARNING SIGNS ALONG -L- LINE (NC 49) AND -Y1- LINE (SR 2651), (SEE RSD 1101.01, SHEET 3 OF 3)

PHASE I

- STEP 1. AWAY FROM TRAFFIC, CONSTRUCT -L- LINE, -Y1- LINE, INCLUDING NEW BRIDGE AND ROADWAY APPROACHES, DRAINAGE, GUARDRAIL, AND PAVE UP TO BUT NOT INCLUDING THE FINAL LAYER OF SURFACE COURSE AS FOLLOWS (SEE CONSTRUCTION PLANS AND TMP-2 THRU TMP-4):
- STA. 17+00 +/- -L- TO STA. 36+25 +/- -L-
 - STA. 37+25 +/- -L- TO STA. 42+00 +/- -L-
 - STA. 10+12 +/- -Y1- TO STA. 10+50 +/- -Y1-
- USING FLAGGERS, CONSTRUCT -L- LINE UNDER TRAFFIC, UP TO BUT NOT INCLUDING THE FINAL LAYER OF SURFACE COURSE AS FOLLOWS (SEE CONSTRUCTION PLANS AND TMP-4):
- STA. 36+25 +/- -L- TO STA. 37+25 +/- -L-
- USING RSD 1101.02 (SHEET 1 OF 15), WIDEN -L- LINE, -Y1- LINE, UP TO EXISTING EDGE OF PAVEMENT ELEVATIONS AS FOLLOWS (SEE CONSTRUCTION PLANS AND TMP-2 THRU TMP-4):
- STA. 11+00 +/- -L- TO STA. 17+00 +/- -L-
 - STA. 42+00 +/- -L- TO STA. 47+50 +/- -L-
 - STA. 10+50 +/- -Y1- TO STA. 11+48 +/- -Y1-

PHASE II

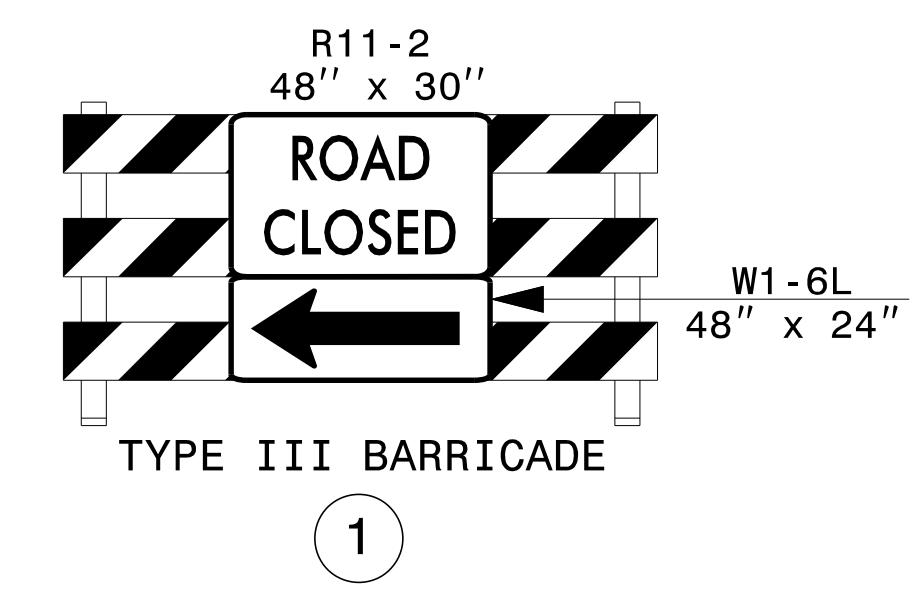
- STEP 1. USING RSD 1101.02 (SHEET 1 OF 15), PAVE UP TO BUT NOT INCLUDING THE FINAL LAYER OF SURFACE COURSE AS FOLLOWS (SEE CONSTRUCTION PLANS, TMP-5 AND TMP-7):
- STA. 11+00 +/- -L- TO STA. 17+00 +/- -L-
 - STA. 42+00 +/- -L- TO STA. 47+50 +/- -L-
- USING RSD 1101.02 (SHEET 1 OF 15), PLACE TEMPORARY PAVEMENT MARKINGS AND MARKERS AS FOLLOWS (SEE CONSTRUCTION PLANS AND TMP-5 THRU TMP-7):
- STA. 11+00 +/- -L- TO STA. 47+50 +/- -L-
- SHIFT TRAFFIC FROM A TWO-LANE, TWO WAY PATTERN TO A NEW TWO-LANE, TWO WAY PATTERN ON -L- LINE.

PHASE II

- STEP 2. USING RSD 1101.02 (SHEET 1 OF 15), CONSTRUCT -L- LINE AS SHOWN (SEE CONSTRUCTION PLANS, TMP-5, AND TMP-7):
- STA. 11+00 +/- -L- TO STA. 17+00 +/- -L-
 - STA. 42+00 +/- -L- TO STA. 47+50 +/- -L-
- USING FLAGGERS, CONSTRUCT -Y1- LINE UNDER TRAFFIC, UP TO BUT NOT INCLUDING THE FINAL LAYER OF SURFACE COURSE AS FOLLOWS (SEE CONSTRUCTION PLANS AND TMP-5 THRU TMP-7):
- STA. 10+50 +/- -Y1- TO STA. 12+00 +/- -Y1-
- USING FLAGGERS, AS NECESSARY, OBLITERATE EXISTING BRIDGE AS SHOWN ON TMP-6.
- USING FLAGGERS, AS NECESSARY, REMOVE PAVEMENT AS SHOWN ON TMP-5 THRU TMP-7.

PHASE III

- STEP 1. USING RSD NO. 1101.02 (SHEET 1 OF 15), PAVE THE FINAL LAYER OF SURFACE COURSE FOR ALL LINES AS FOLLOWS:
- STA. 11+00 +/- -L- TO STA. 47+50 +/- -L-
 - STA. 10+12 +/- -Y1- TO STA. 12+00 +/- -Y1-
- STEP 2. USING RSD NO. 1101.02 (SHEET 1 OF 15), PLACE FINAL PAVEMENT MARKINGS AND MARKERS FOR -L- (SEE FINAL PAVEMENT MARKING PLANS).
- USING RSD NO. 1101.02 (SHEET 1 OF 15), REMOVE ALL TRAFFIC CONTROL DEVICES AND SIGNAGE.



APPROVED: *Don A. Parker*
40482802618410...

DATE: 9/27/2016

DOCUMENT NOT CONSIDERED FINAL UNLESS ALL SIGNATURES COMPLETED

TEMPORARY TRAFFIC CONTROL PHASING AND PHASE I DETAILS

9/27/2016
 p:\t\p\proj\jects-b\5548\trafficcontrol\top\B5548_TC_PHL_TMP02.dgn
 User:tscoats