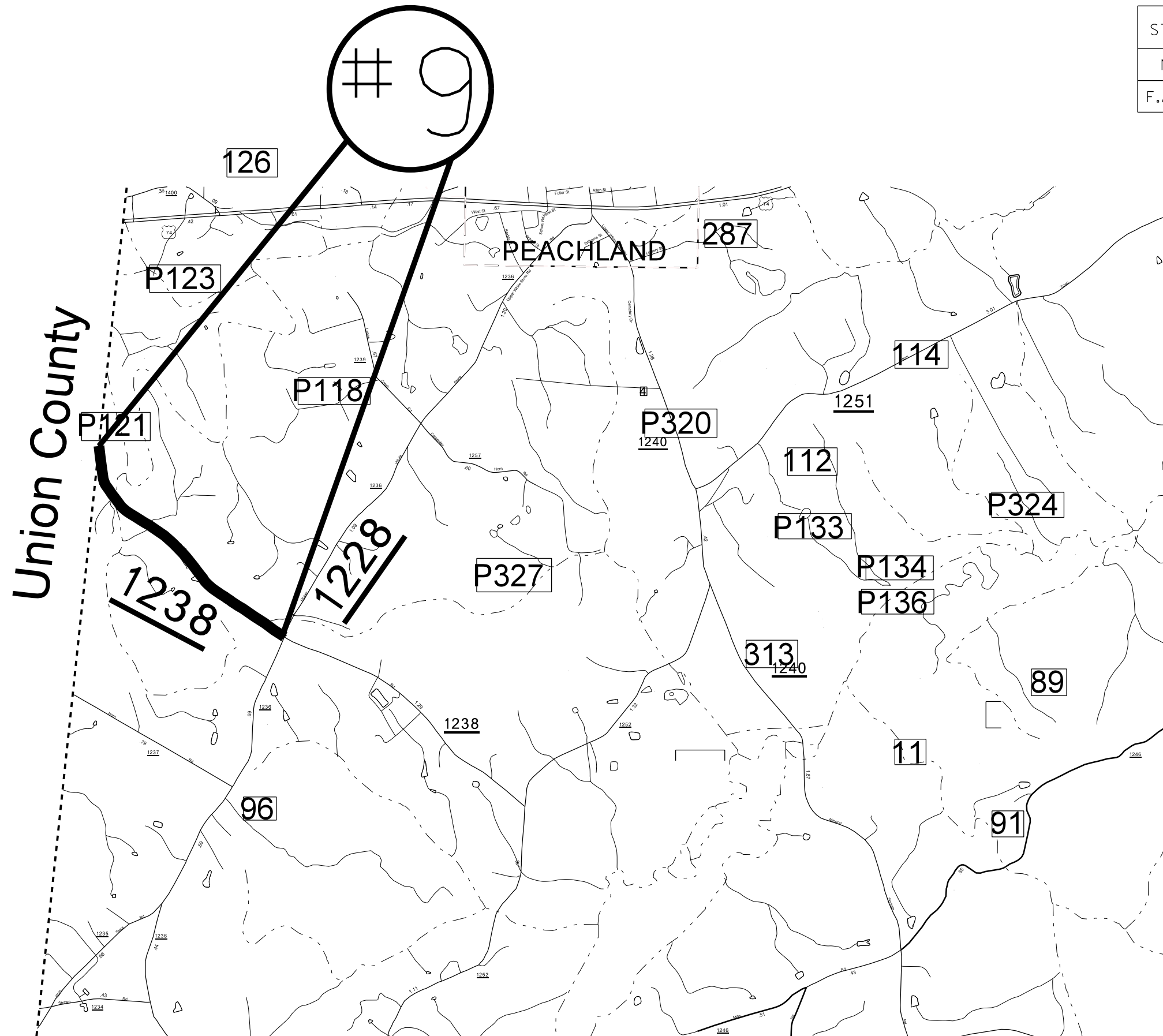


STATE	PROJECT NO.	SHEET NO.	TOTAL SHEETS
N.C.	2017CPT.10.16.10041.1 - ETC. 2017CPT.10.16.20041.4 - ETC. 2017CPT.10.16.20042.8 - ETC.	6	
F.A. PROJECT NO.			



ENLARGED MUNICIPAL AND SUBURBAN AREAS

ANSON COUNTY

NORTH CAROLINA

PREPARED BY THE
NORTH CAROLINA DEPARTMENT OF TRANSPORTATION
DIVISION OF HIGHWAYS - DIVISION 10 DISTRICT 3

MAP #9 SR 1238 HASTY ROAD
1.2 MILES

FROM SR 1236 UPPER WHITE STORE ROAD
TO UNION COUNTY LINE