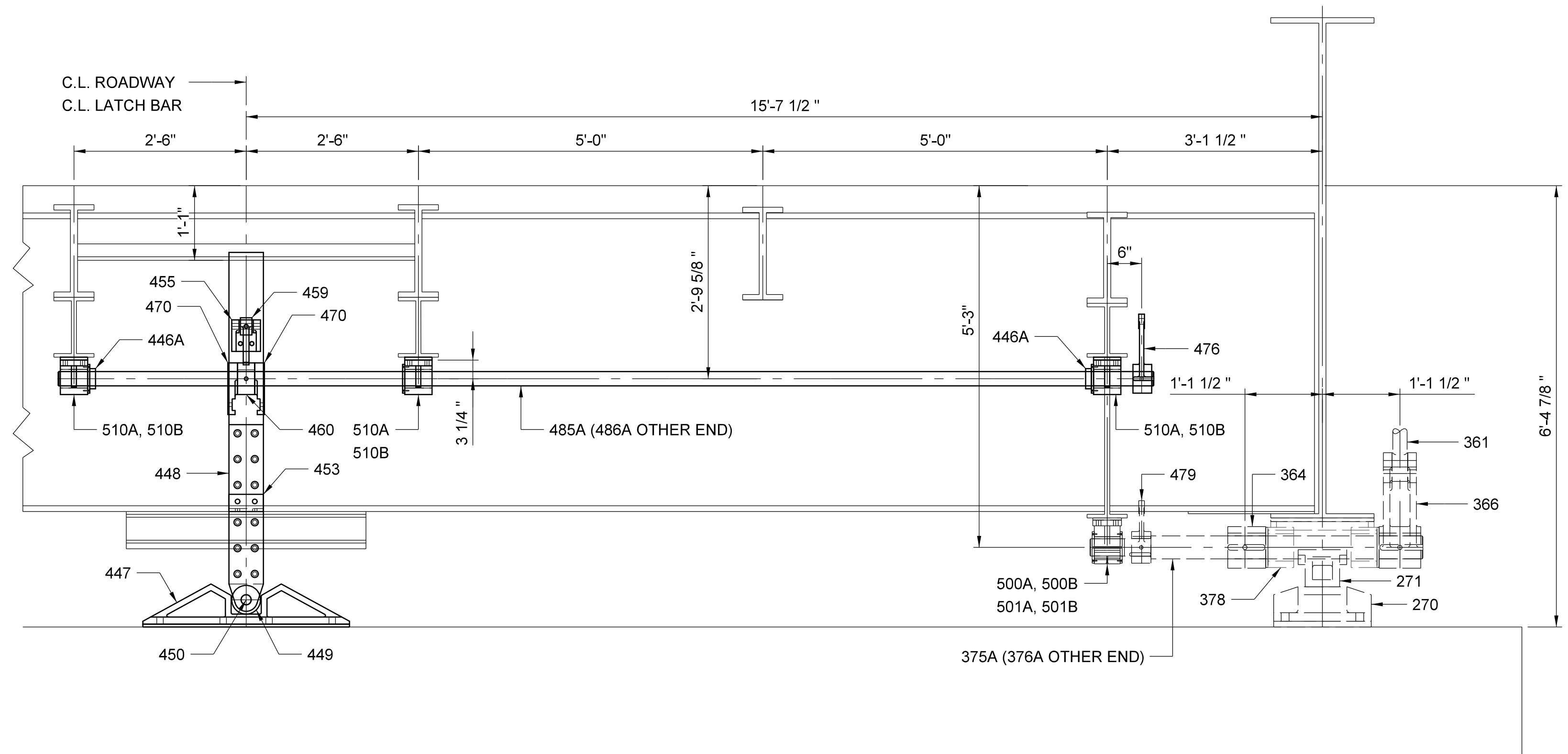


SECTION D-D
SCALE: 3/4" = 1'-0"



SECTION E-E
SCALE: 3/4" = 1'-0"

CENTERING DEVICE MACHINERY REHABILITATION NOTES:

1. FOR A GENERAL DESCRIPTION OF WORK FOR EACH OF THE COMPONENTS SHOWN ON THIS SHEET, PLEASE REFER TO THE CENTERING DEVICE MACHINERY TABLE SHOWN ON SHEET NO. M-22.
2. THE ORIGINAL DRAWINGS PROVIDED THIS DIMENSION TO BE LOCATED IN THE FIELD FOR PROPER OPERATION OF THE LATCH SYSTEM. THE CONTRACTOR SHOULD VERIFY THIS DIMENSION WHEN DIASSEMBLING THE LATCH SYSTEM.

PROJECT NO. B-5936
TYRRELL COUNTY
 BRIDGE NO: 7

STATE OF NORTH CAROLINA
 DEPARTMENT OF TRANSPORTATION
 RALEIGH

**CENTERING DEVICE
 MACHINERY DETAILS I**

**ALLIGATOR RIVER
 SWING SPAN**

REVISIONS

NO.	BY:	DATE:	NO.	BY:	DATE:
1			3		
2			4		

SHEET NO.
M-20
 TOTAL SHEETS
 23

DRAWN BY: JAG/MS DATE: 8/8/2016
 CHECKED BY: GAF/RH DATE: 8/8/2016
 DESIGN ENGINEER OF RECORD: JAG/MS DATE: 8/8/2016

DWG NUMBER: 87 TOTAL DWGS: 90

DOCUMENT NOT CONSIDERED FINAL UNLESS ALL SIGNATURES COMPLETED

DocuSigned by:
Scott Reynolds
 9/14/2016

Hardesty & Hanover
 engineering that moves you

SEAL
 036065
 ENGINEER
 SCOTT A. REYNOLDS