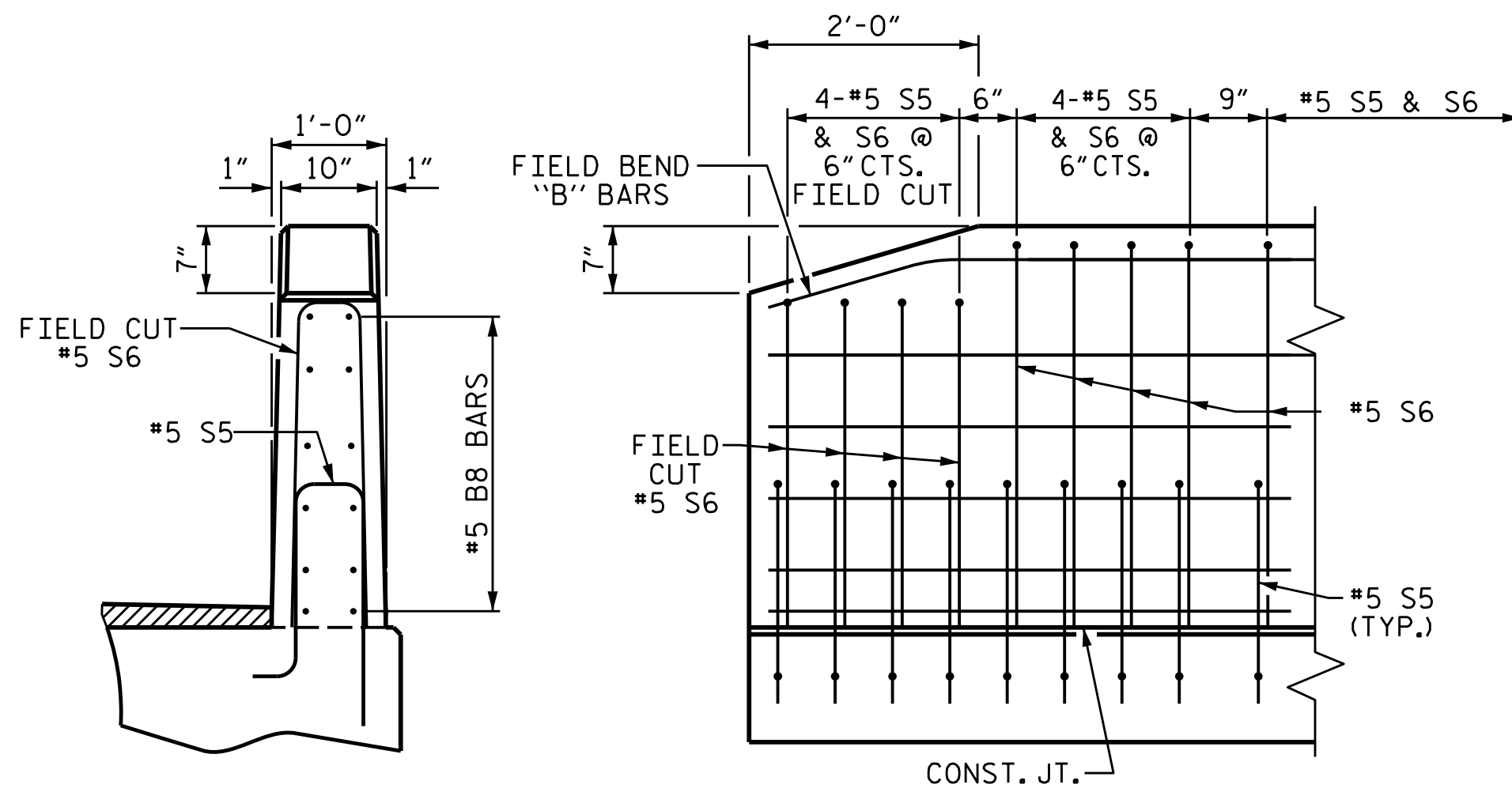


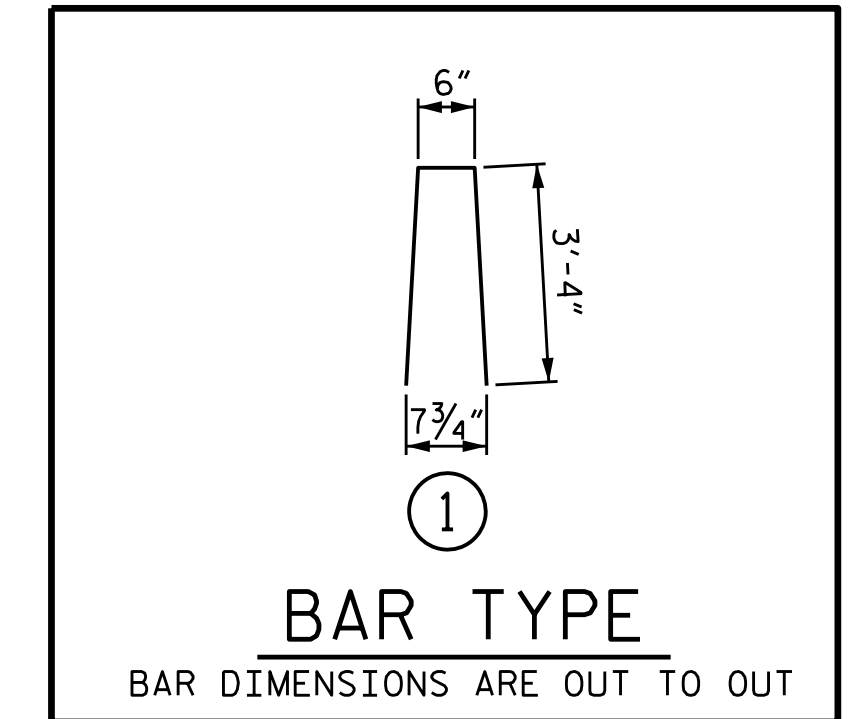
**FIXED END**  
(TYPE II - 20 REQ'D)

**ELASTOMERIC BEARING DETAILS**

ELASTOMER IN ALL BEARINGS SHALL BE 60 DUROMETER HARDNESS.



**END VIEW**      **SIDE VIEW**  
**END OF RAIL DETAILS**



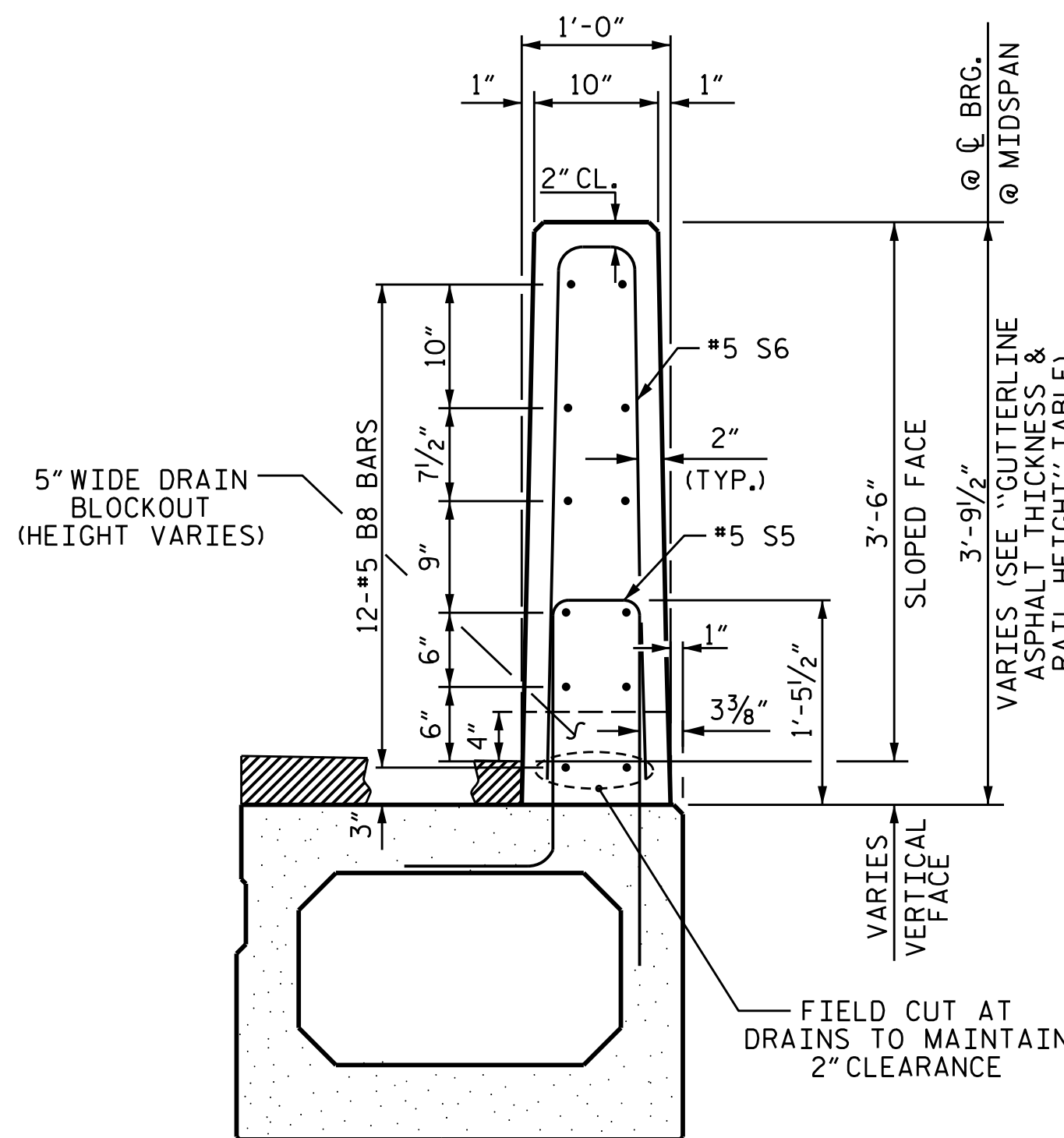
| BILL OF MATERIAL FOR VERTICAL CONCRETE BARRIER RAIL |                                 |      |      |         |        |
|---|---------------------------------|------|------|---------|--------|
| BAR   | BARS PER PAIR OF EXTERIOR UNITS | SIZE | TYPE | LENGTH  | WEIGHT |
|   | 80' UNIT                        |      |      |         |        |
| * B8  | 72                              | #5   | STR  | 26'-3"  | 1971   |
| * S6  | 222                             | #5   | 1    | 7'-2"   | 1659   |
| * EPOXY COATED REINFORCING STEEL                    |                                 |      |      | LBS.    | 3630   |
| CLASS AA CONCRETE                                   |                                 |      |      | CU.YDS. | 20.7   |
| TOTAL VERTICAL CONCRETE BARRIER RAIL                |                                 |      |      | LN. FT. | 160.00 |

**GUTTERLINE ASPHALT THICKNESS & RAIL HEIGHT**

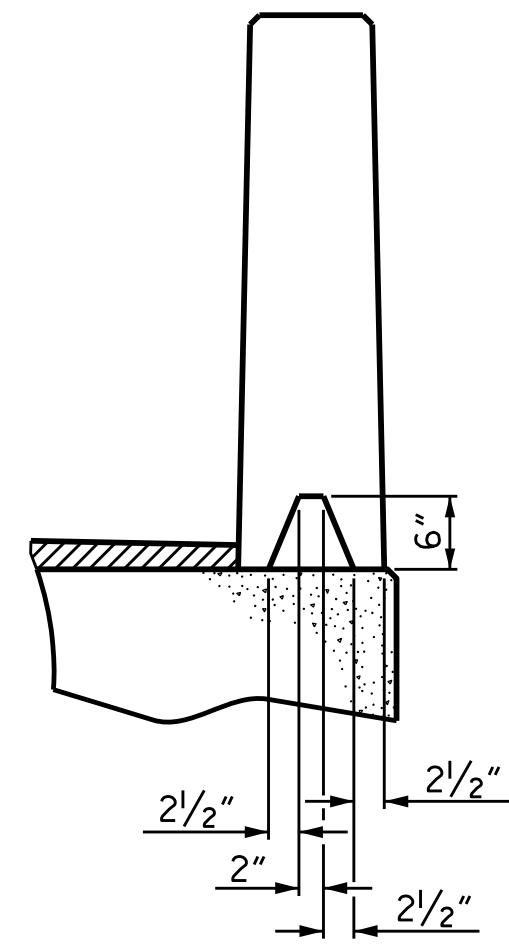
|           | ASPHALT OVERLAY THICKNESS @ MID-SPAN | RAIL HEIGHT @ MID-SPAN |
|-----------|--------------------------------------|------------------------|
| 80' UNITS | 2 1/4"                               | 3'-8 1/4"              |

**BOX BEAM UNITS REQUIRED**

|               | NUMBER | LENGTH | TOTAL LENGTH |
|---------------|--------|--------|--------------|
| EXTERIOR B.B. | 2      | 80'-0" | 160'-0"      |
| INTERIOR B.B. | 8      | 80'-0" | 640'-0"      |
| TOTAL         | 10     |        | 800'-0"      |

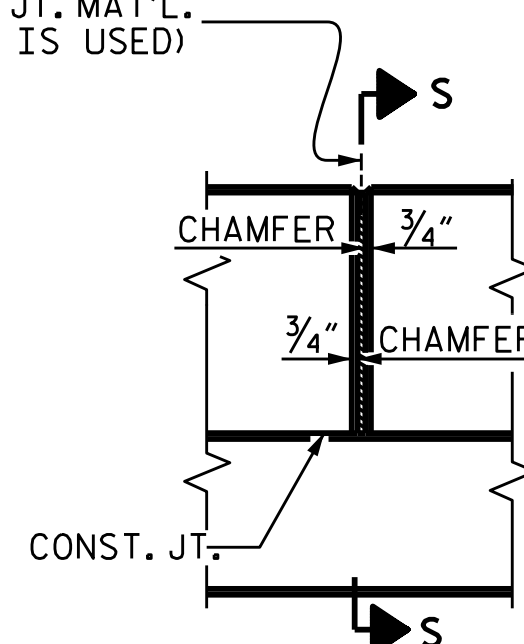


**SECTION THRU RAIL**



**SECTION S-S**  
AT DAM IN OPEN JOINT  
(THIS IS TO BE USED ONLY WHEN SLIP FORM IS USED)

1/2" EXP. JT. MAT'L HELD IN PLACE WITH GALVANIZED NAILS.  
(NOTE: OMIT EXP. JT. MAT'L WHEN SLIP FORM IS USED)



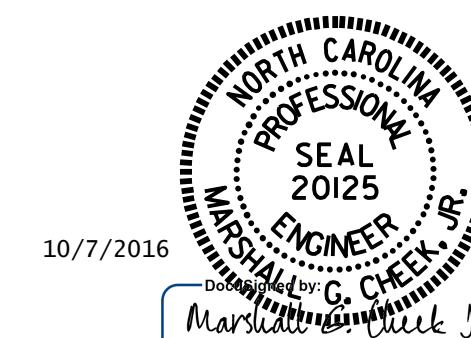
**ELEVATION AT EXPANSION JOINTS**

**VERTICAL CONCRETE BARRIER RAIL DETAILS**

PROJECT NO. B-4814  
SAMPSON COUNTY  
STATION: 17+71.00 -L-  
SHEET 5 OF 5

STATE OF NORTH CAROLINA  
DEPARTMENT OF TRANSPORTATION  
RALEIGH

3'-0" X 2'-9"  
PRESTRESSED CONCRETE  
BOX BEAM UNIT



ASSEMBLED BY : R. CAREATHERS/MP DATE : 6/3/15  
CHECKED BY : M. PISO DATE : 6/17/15  
DRAWN BY : DGE 10/11 REV. 4/15 MAA/TMG  
CHECKED BY : TMG 11/11

DOCUMENT NOT CONSIDERED FINAL UNLESS ALL SIGNATURES COMPLETED

| REVISIONS |     |       |     |     |       | SHEET NO.    |
|-----------|-----|-------|-----|-----|-------|--------------|
| NO.       | BY: | DATE: | NO. | BY: | DATE: | S2-9         |
| 1         |     |       | 3   |     |       | TOTAL SHEETS |
| 2         |     |       | 4   |     |       | 46           |