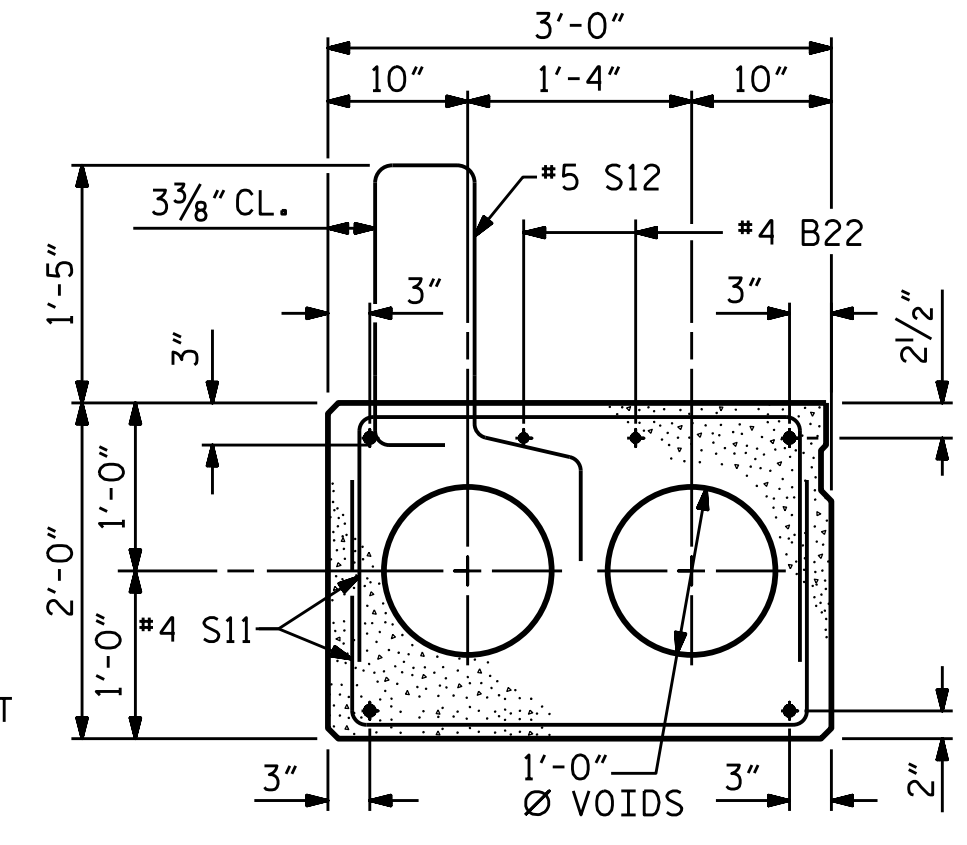


HALF SECTION
AT INTERMEDIATE DIAPHRAGMS

TYPICAL SECTION

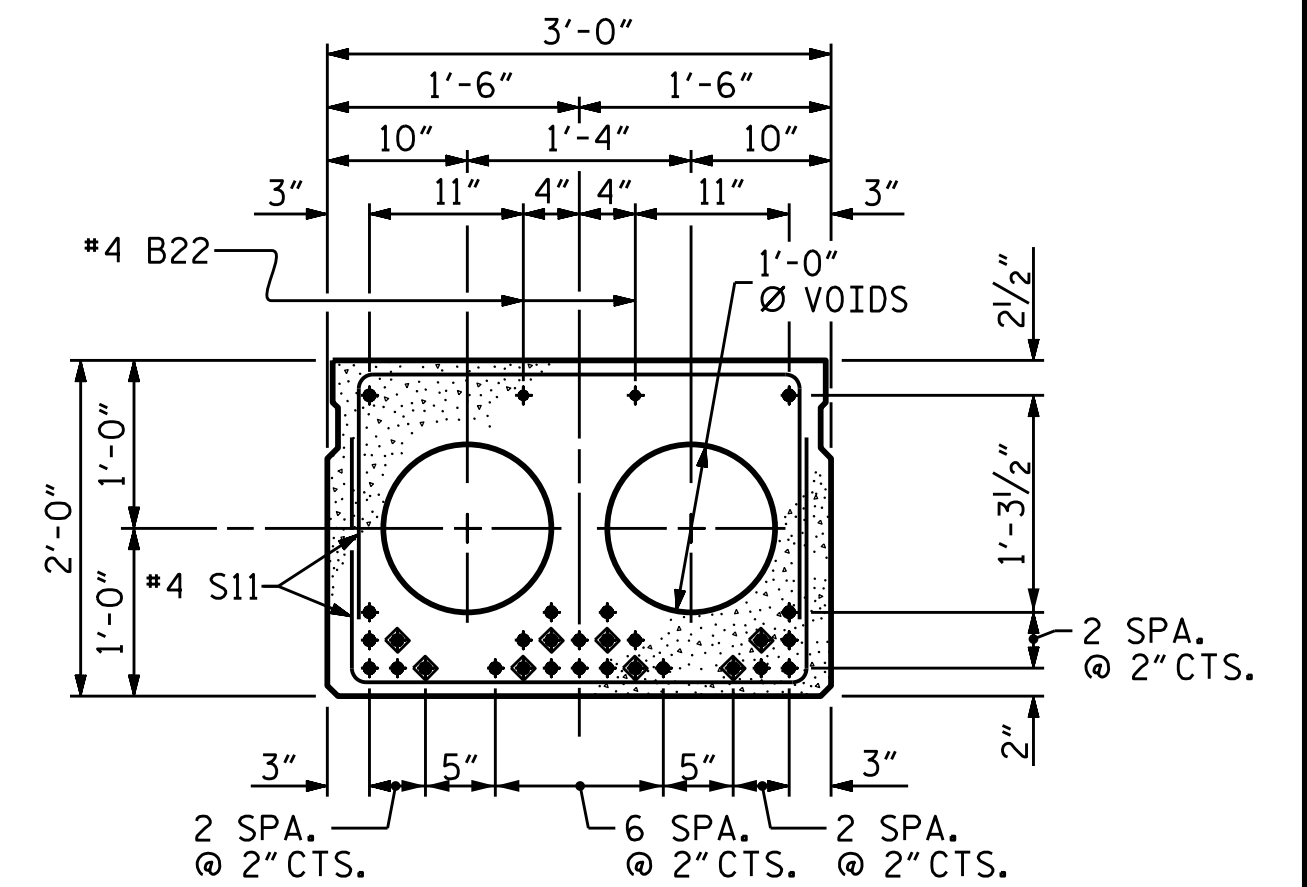
HALF SECTION
THROUGH VOIDS

* - THE MAXIMUM VERTICAL CONCRETE BARRIER RAIL HEIGHT AND ASPHALT THICKNESS IS SHOWN. THE HEIGHT OF THE BARRIER RAIL AND ASPHALT THICKNESS VARIES WHILE THE TOP OF THE VERTICAL CONCRETE BARRIER RAIL FOLLOWS THE PROFILE OF THE GUTTERLINE. FOR RAIL HEIGHT DETAILS AND ASPHALT THICKNESS, SEE "VERTICAL CONCRETE BARRIER RAIL DETAILS", SHEET 3 OF 3.



EXTERIOR SLAB SECTION

(FOR PRESTRESSED STRAND LAYOUT, SEE "INTERIOR SLAB SECTION")

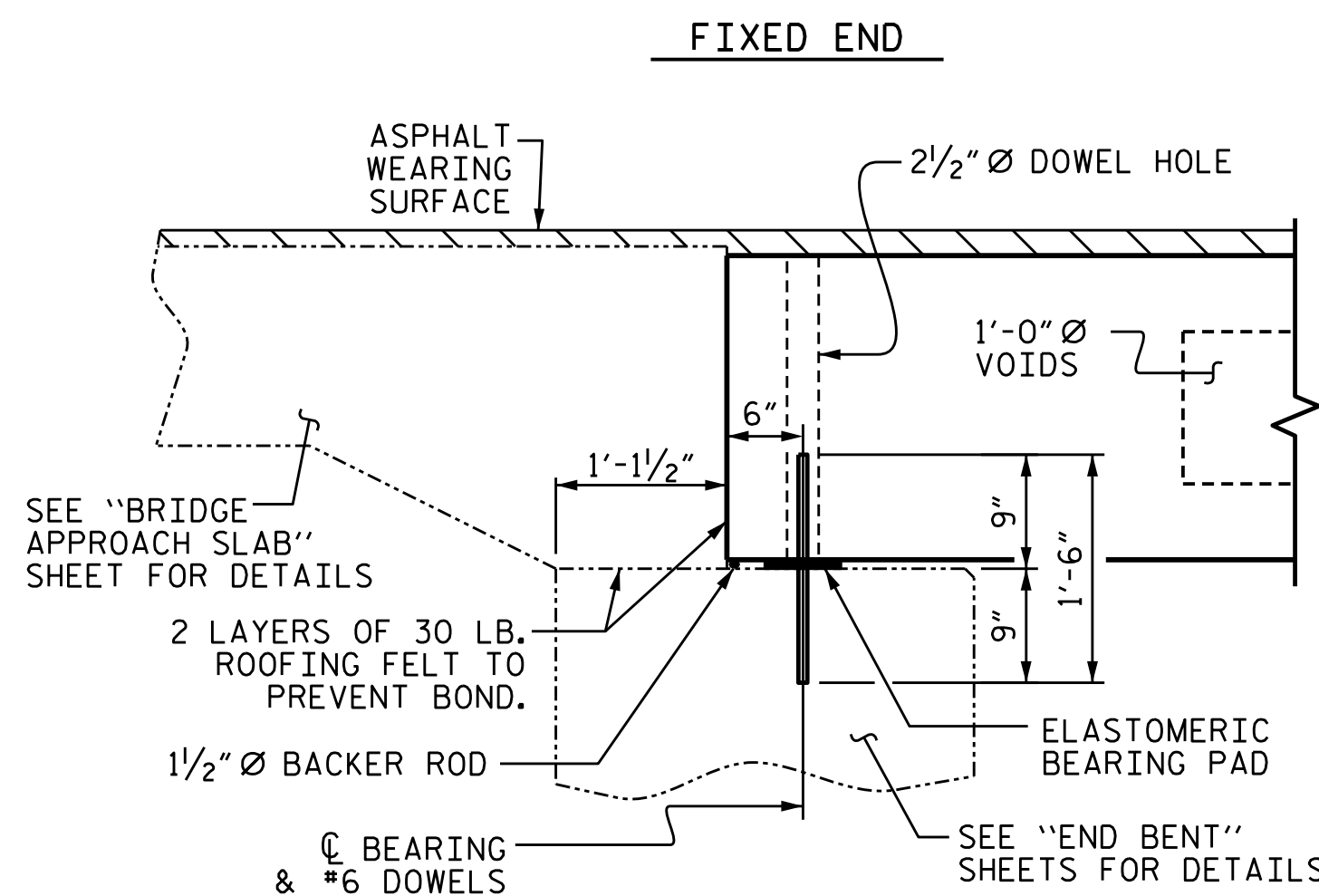


INTERIOR SLAB SECTION
(28 STRANDS REQUIRED)

0.6" Ø LOW
RELAXATION STRAND LAYOUT

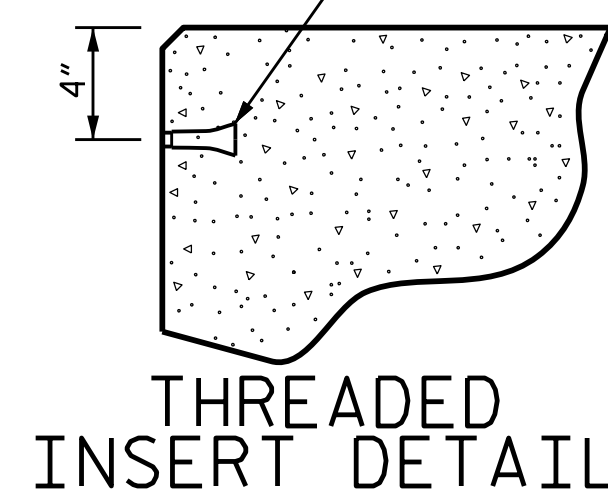
◆ BOND SHALL BE BROKEN ON THESE STRANDS FOR A DISTANCE OF 12'-0" FROM END OF CORED SLAB UNIT. SEE STANDARD SPECIFICATIONS, ARTICLE 1078-7.

DEBONDING LEGEND

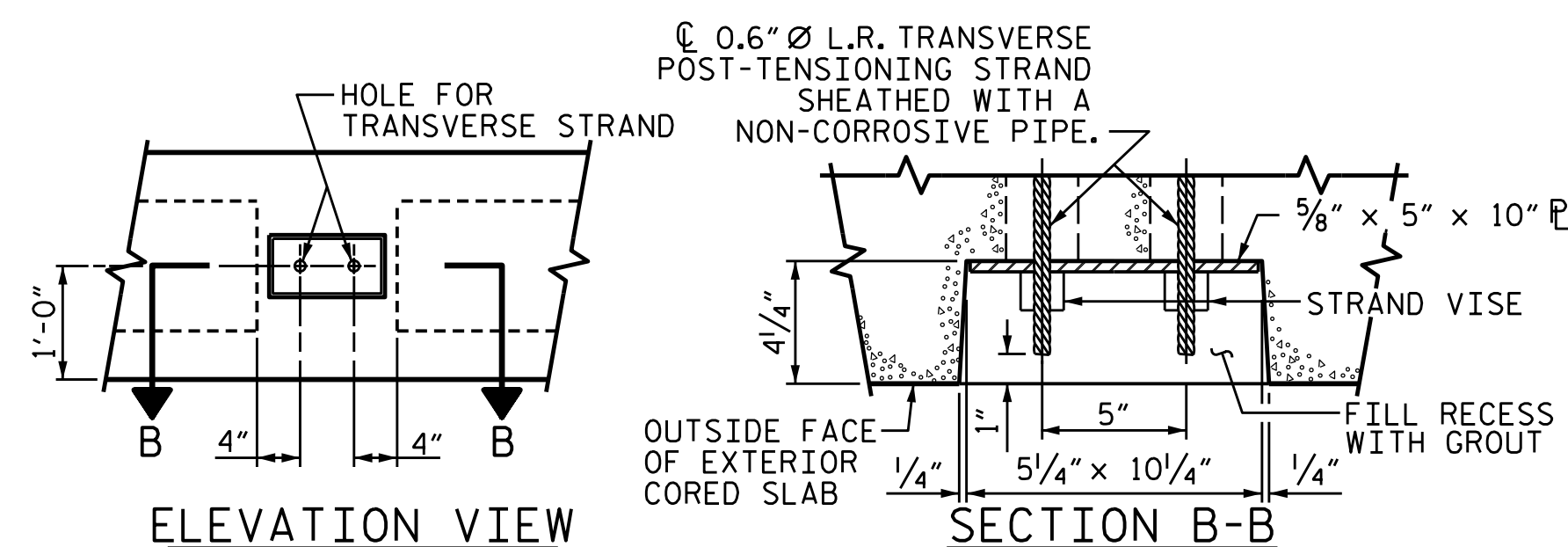


SECTION AT END BENT

PERMITTED THREADED INSERT CAST IN OUTSIDE FACE OF EXTERIOR UNIT AND RECESSED 3/8" SIZE TO BE DETERMINED BY CONTRACTOR.



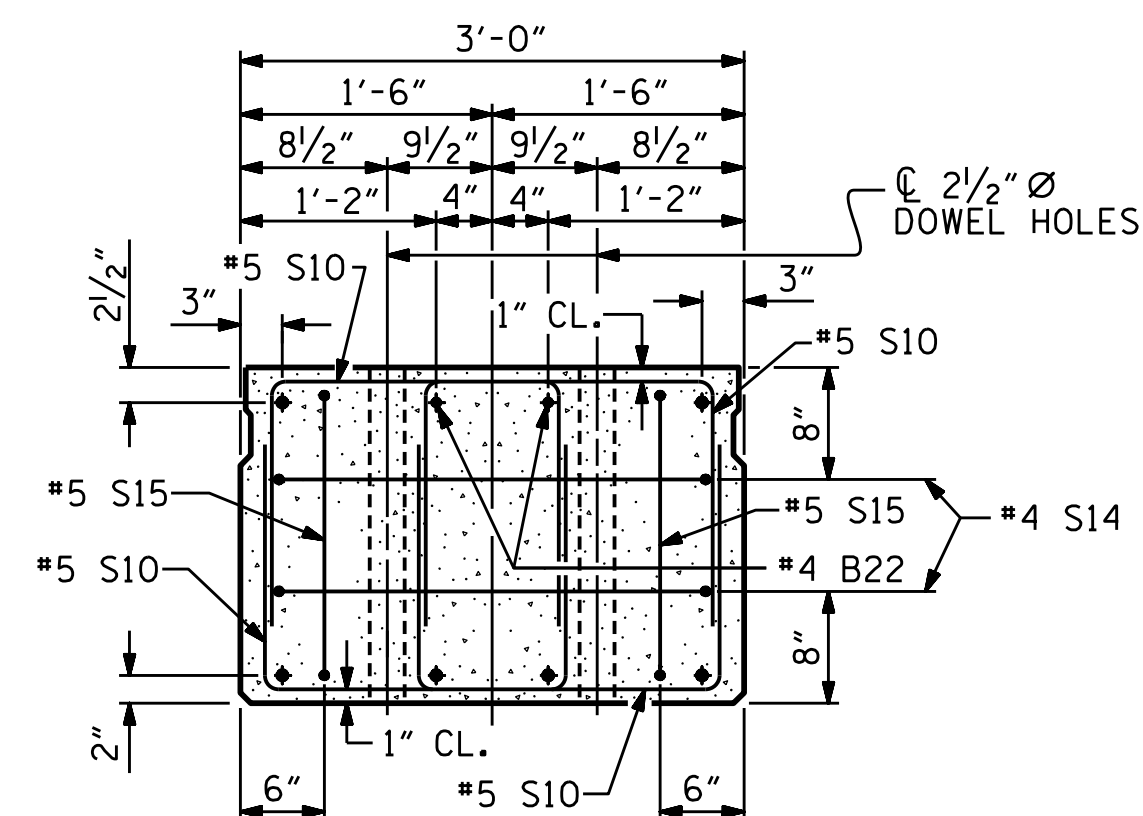
THREADED INSERT DETAIL



ELEVATION VIEW

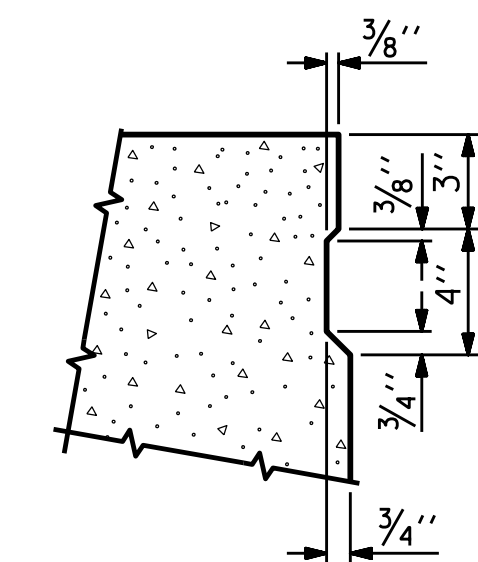
SECTION B-B

GROUTED RECESS AT END OF
POST-TENSIONED STRAND CORED SLABS



END ELEVATION

SHOWING PLACEMENT OF DOUBLE STIRRUPS AND LOCATION OF DOWEL HOLES. (STRAND LAYOUT NOT SHOWN.) INTERIOR SLAB UNIT SHOWN-EXTERIOR SLAB UNIT SIMILAR EXCEPT SHEAR KEY LOCATION.



SHEAR KEY DETAIL

NOTE: OMIT SHEAR KEY ON OUTSIDE FACE OF EXTERIOR CORED SLABS.

PROJECT NO. B-4814
SAMPSON COUNTY
STATION: 14+39.00 -L-

SHEET 1 OF 3



10/7/2016

STATE OF NORTH CAROLINA
DEPARTMENT OF TRANSPORTATION
RALEIGH

3'-0" X 2'-0"
PRESTRESSED CONCRETE
CORED SLAB UNIT

ASSEMBLED BY: R. CAREATERS/MPDATE : 5/29/15
CHECKED BY : M. PISO DATE : 6/9/15
DRAWN BY : MAA 6/10
CHECKED BY : MKT 7/10
REV. 8/14 MAA/TMG

DOCUMENT NOT CONSIDERED
FINAL UNLESS ALL
SIGNATURES COMPLETED

REVISIONS						SHEET NO.
NO.	BY:	DATE:	NO.	BY:	DATE:	S1-5
1			3			TOTAL SHEETS
2			4			46

STR. #1