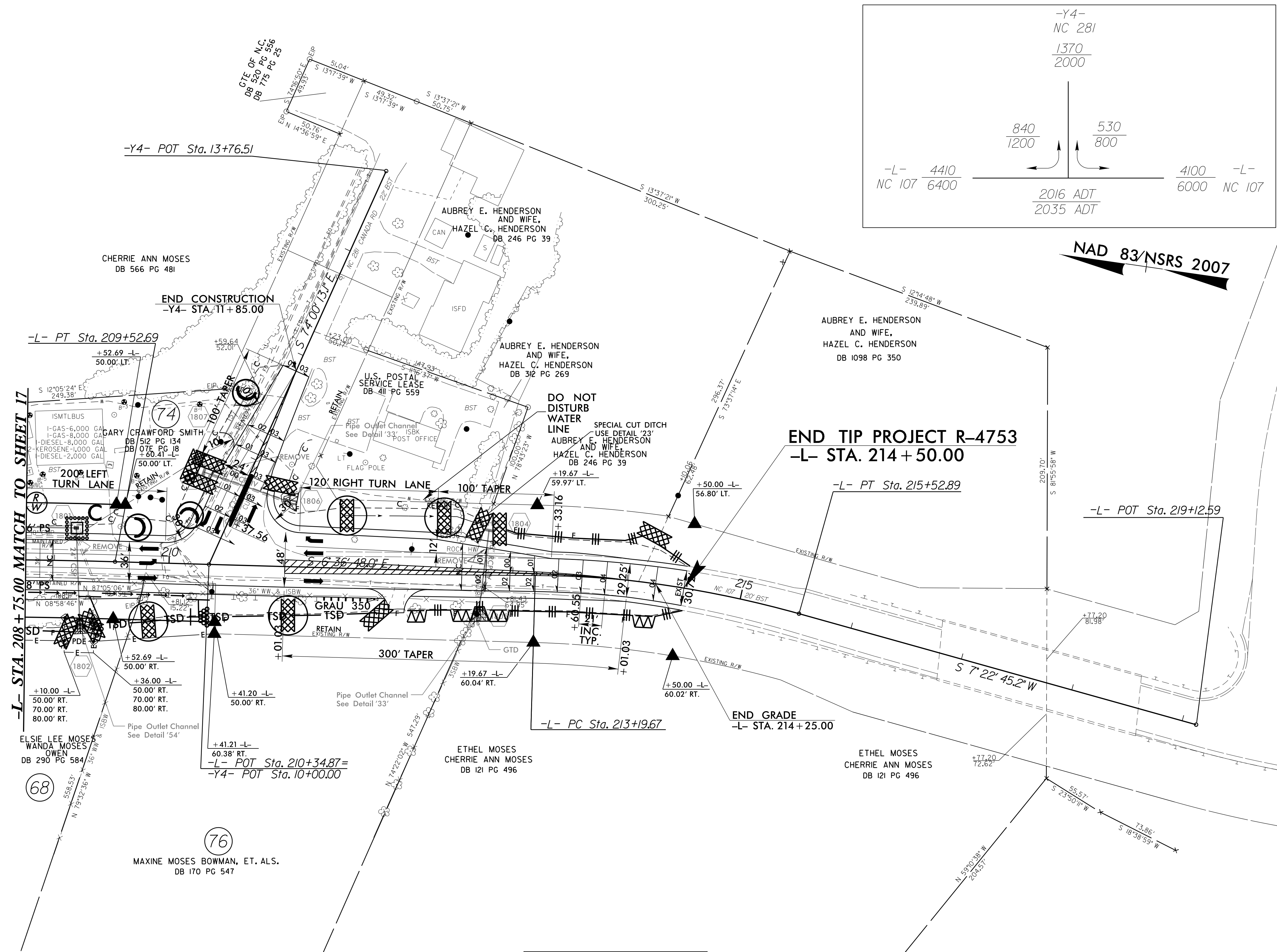
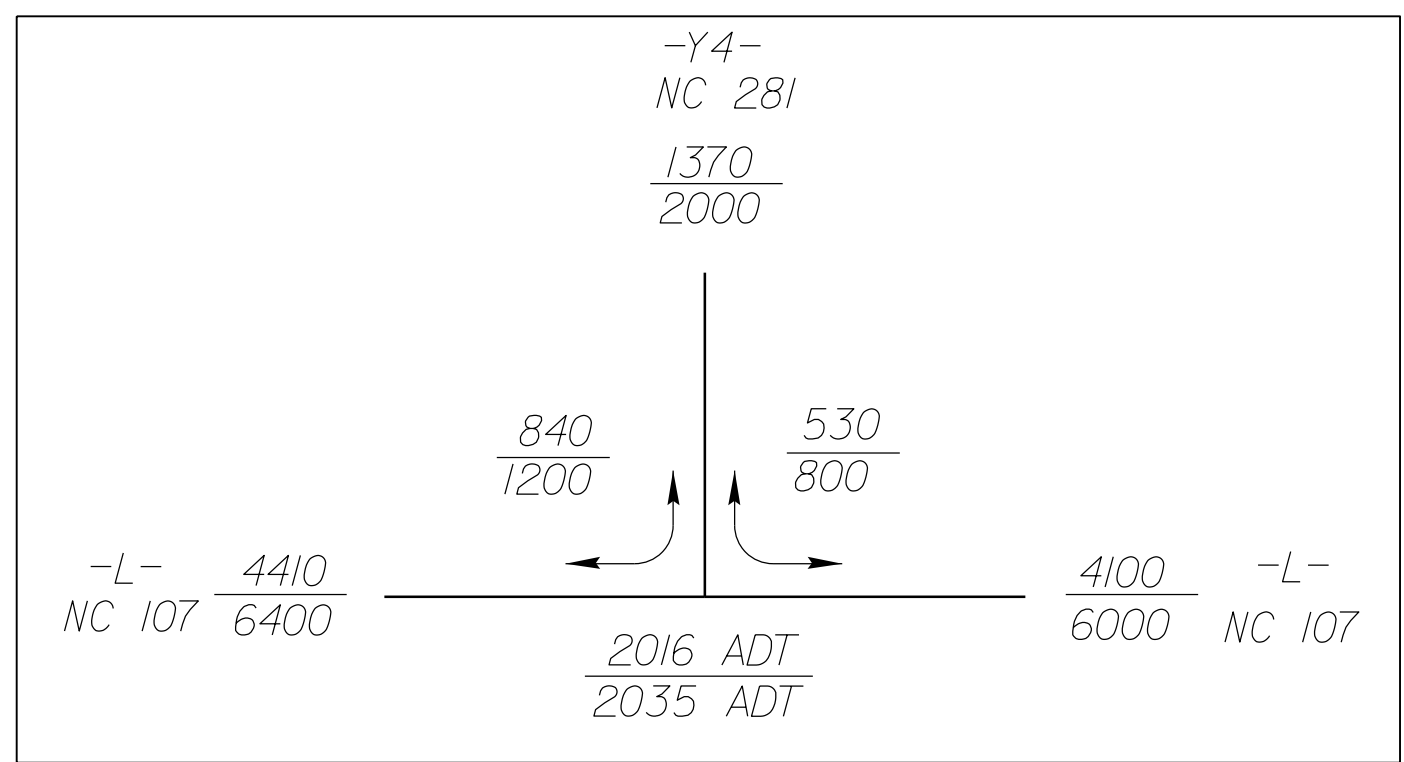
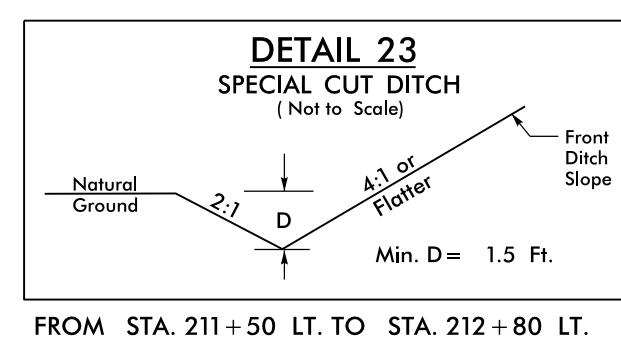
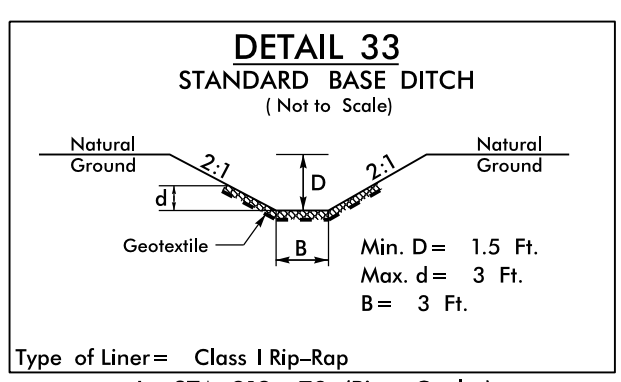
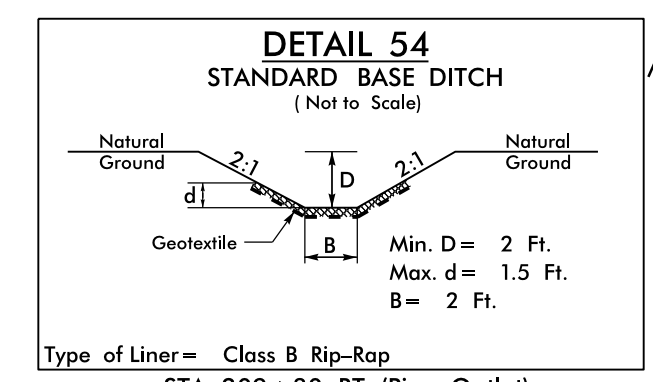


PROJECT REFERENCE NO. R-4753	SHEET NO. EC-37/CONST.B
RW SHEET NO.	
ROADWAY DESIGN ENGINEER	HYDRAULICS ENGINEER



NAD 83/NSRS 2007

-L- STA. 208+75.00 MATCH TO SHEET 17



-L-	-L-
PI Sta 205+28.46	PI Sta 214+36.86
$\Delta = 9^{\circ}44'46.4''$ (RT)	$\Delta = 13^{\circ}59'33.2''$ (RT)
$D = 1^{\circ}08'45.3''$	$D = 5^{\circ}59'58.4''$
$L = 850.52'$	$L = 233.23'$
$T = 426.29'$	$T = 117.20'$
$R = 5,000.00'$	$R = 955.00'$
$SE = NC$	$SE = Exist (.04)$

Place Matting for Erosion Control on All Slopes as Work Allows.

PROP. CONC. ISLAND
 PROP. PAINT STRIPING
 GTD = GRADE TO DRAIN
 SEE SHEETS 25 & 26 FOR -L- PROFILE
 SEE SHEET 28 FOR -Y4- PROFILE

Note: All Driveway Radii are 20' Unless Otherwise Noted
 Note: All Proposed Guardrail to Use Weathered Steel Unless Otherwise Noted
 Note: Transition From 6' Paved Shoulder To Existing -L- Sta. 213+51.03 To Sta. 214+01.03 Lt./Rt.

09-SEP-2016 15:46
 R:\E-2016\1546\Drawings\17\17-CONST\17-CONST-37-CONST.B-4753-EC-psht18.dgn
 5/14/99