

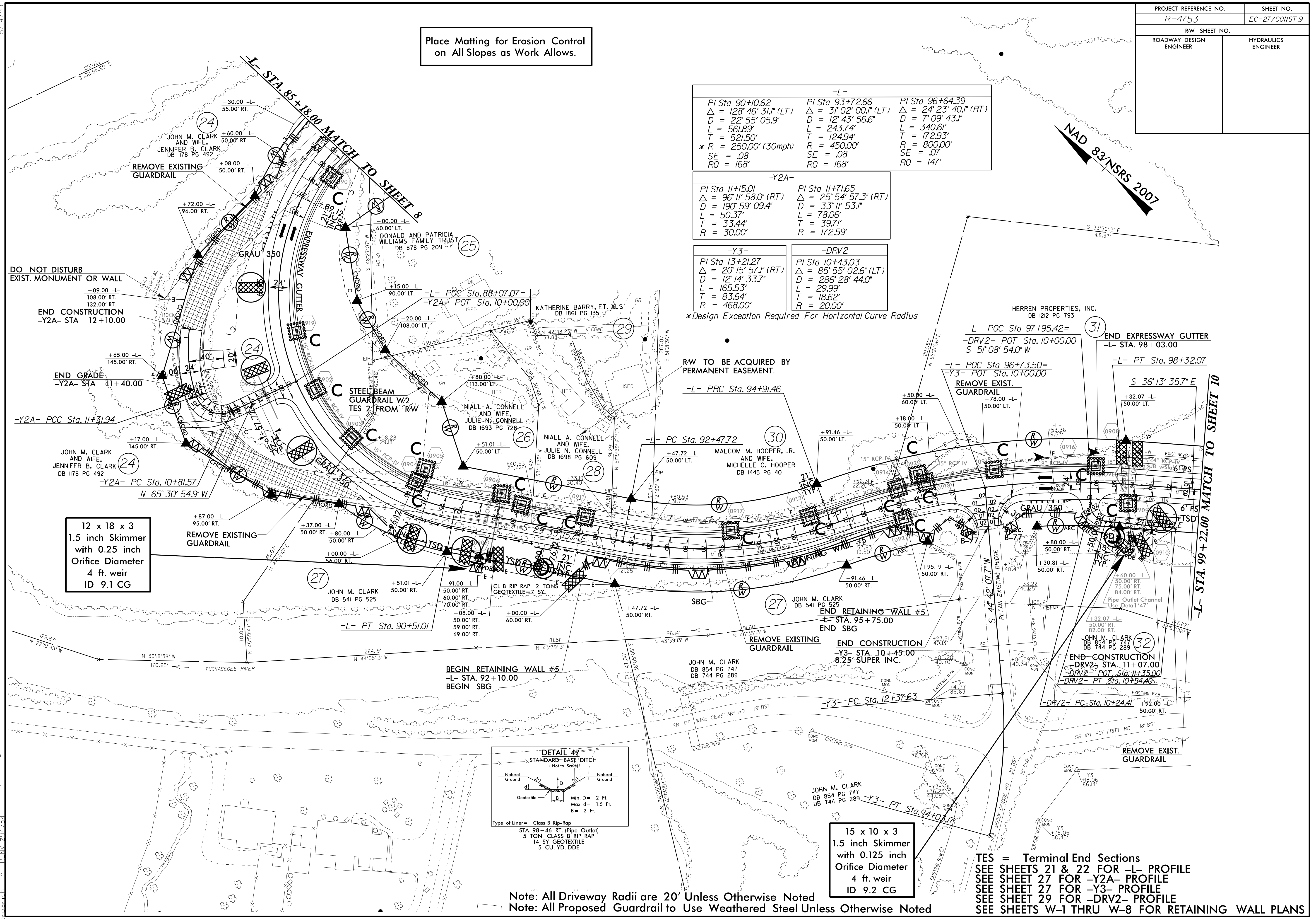
Place Matting for Erosion Control on All Slopes as Work Allows.

-L-		
PI Sta 90+10.62	PI Sta 93+72.66	PI Sta 96+64.39
$\Delta = 128' 46' 31.1''$ (LT)	$\Delta = 31' 02' 00.1''$ (LT)	$\Delta = 24' 23' 40.1''$ (RT)
D = 22' 55' 05.9"	D = 12' 43' 56.6"	D = 7' 09' 43.1"
L = 561.89'	L = 243.74'	L = 340.61'
T = 521.50'	T = 124.94'	T = 172.93'
* R = 250.00' (30mph)	R = 450.00'	R = 800.00'
SE = .08	SE = .08	SE = .07
RO = 168'	RO = 168'	RO = 147'

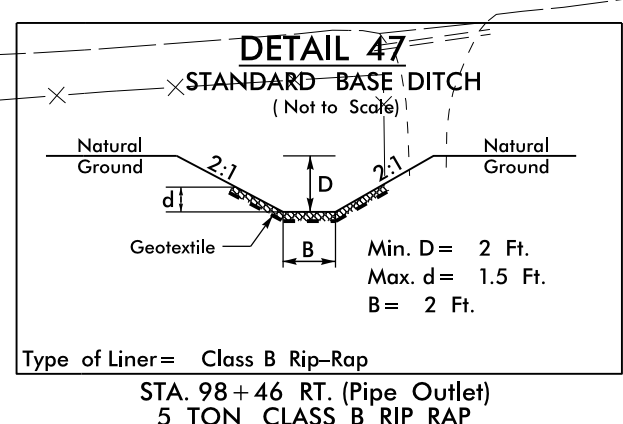
-Y2A-	
PI Sta 11+15.01	PI Sta 11+71.65
$\Delta = 96' 11' 58.0''$ (RT)	$\Delta = 25' 54' 57.3''$ (RT)
D = 190' 59' 09.4"	D = 33' 11' 53.1"
L = 50.37'	L = 78.06'
T = 33.44'	T = 39.71'
R = 30.00'	R = 172.59'

-Y3-	-DRV2-
PI Sta 13+21.27	PI Sta 10+43.03
$\Delta = 20' 15' 57.1''$ (RT)	$\Delta = 85' 55' 02.6''$ (LT)
D = 12' 14' 33.7"	D = 286' 28' 44.0"
L = 165.53'	L = 29.99'
T = 83.64'	T = 18.62'
R = 468.00'	R = 20.00'

*Design Exception Required For Horizontal Curve Radius



12 x 18 x 3
1.5 inch Skimmer
with 0.25 inch
Orifice Diameter
4 ft. weir
ID 9.1 CG



15 x 10 x 3
1.5 inch Skimmer
with 0.125 inch
Orifice Diameter
4 ft. weir
ID 9.2 CG

Note: All Driveway Radii are 20' Unless Otherwise Noted
Note: All Proposed Guardrail to Use Weathered Steel Unless Otherwise Noted

TES = Terminal End Sections
SEE SHEETS 21 & 22 FOR -L- PROFILE
SEE SHEET 27 FOR -Y2A- PROFILE
SEE SHEET 27 FOR -Y3- PROFILE
SEE SHEET 29 FOR -DRV2- PROFILE
SEE SHEETS W-1 THRU W-8 FOR RETAINING WALL PLANS

5/14/99
12-SEP-2016 14:55
UT:\ec\shimma\p\ec\27\CONST.9\4753-EC-27/CONST.9.dgn